



DUAL SPACED NEUTRON LOG

CASED HOLE

COMP. GORE OIL COMPANY	COMPANY GORE OIL COMPANY						
WELL MUNSTERMANN NO. 1	WELL MUNSTERMANN NO. 3						
FIELD	FIELD						
COUNTY RAWLINS	COUNTY RAWLINS		STATE KANSAS		STATE KANSAS		
SEC. 19	TWP. 1S	RGE. 32W	COUNTY RAWLINS				OTHER SERVICES PERF
PERMANENT DATUM GROUND LEVEL ELEV. 3035			ELEV.: K.B. 3040				
LOG MEASURED FROM 5 FT. ABOVE PERM. DATUM			D.F.				
DRILLING MEASURED FROM KELLY BUSHING			G.L. 3035				
DATE	10/12/89						
RUN NO.	ONE						
DEPTH-DRILLER	4264						
DEPTH-LOGGER	4263						
BTM. LOG INTER.	4252						
TOP LOG INTER.	3700						
TYPE FLUID IN HOLE	WATER						
SALINITY PPM NACL	NA						
DENSITY	NA						
LEVEL	FULL						
MAX REC TEMP	118						
OPERATING RIG TIME	1.5 HRS						
EQUIPMENT: LOCATION	4544 :GT. BEND						
RECORDED BY	FRANK MAYERS						
WITNESSED BY	MR. BATES						
TIME@MAX DPTH REACH							
RUN NO.		BOREHOLE RECORD			CASING AND TUBING RECORD		
	BIT	FROM	TO	SIZE	WGT.	FROM	TO
ONE	12.25	0	301	8.625		0	301
TWO	7.875	301	4300	4.55		0	4299

FOLD HERE

SERVICE TICKET NO.: 17500 API SERIAL NO.: EQUIPMENT DATA LOGGING DATA TEMPERATURE

GAMMA		NEUTRON		TEMPERATURE	
RUN NO.	ONE	RUN NO.	ONE	SCALE	SCALE
SERIAL NO.	102534	SERIAL NO.	102534	TC/FL	TC/FL
MODEL NO.	265A	MODEL NO.	265A	L	R
DIAMETER	3.375	DIAMETER	3.375		
DETECTOR MODEL NO.	265A	LOG TYPE	NEU-NEU		
TYPE	SCINT	SOURCE TYPE	AM-241/B		
LENGTH	4 IN	SERIAL NO.	D9N-89		
DISTANCE TO SOURCE		STRENGTH	18.5 CI		

GENERAL		GAMMA		TEMPERATURE		NEUTRON	
RUN NO.	ONE	RUN NO.	ONE	SCALE	SCALE	TC/FL	TC/FL
DEPTHS FROM	3700	TO	3700	L	R	L	R
FT./MIN.	FREE	POSITION	FREE				
SEE TIME		TC/FL	1.75			1.25	30
MARKS							

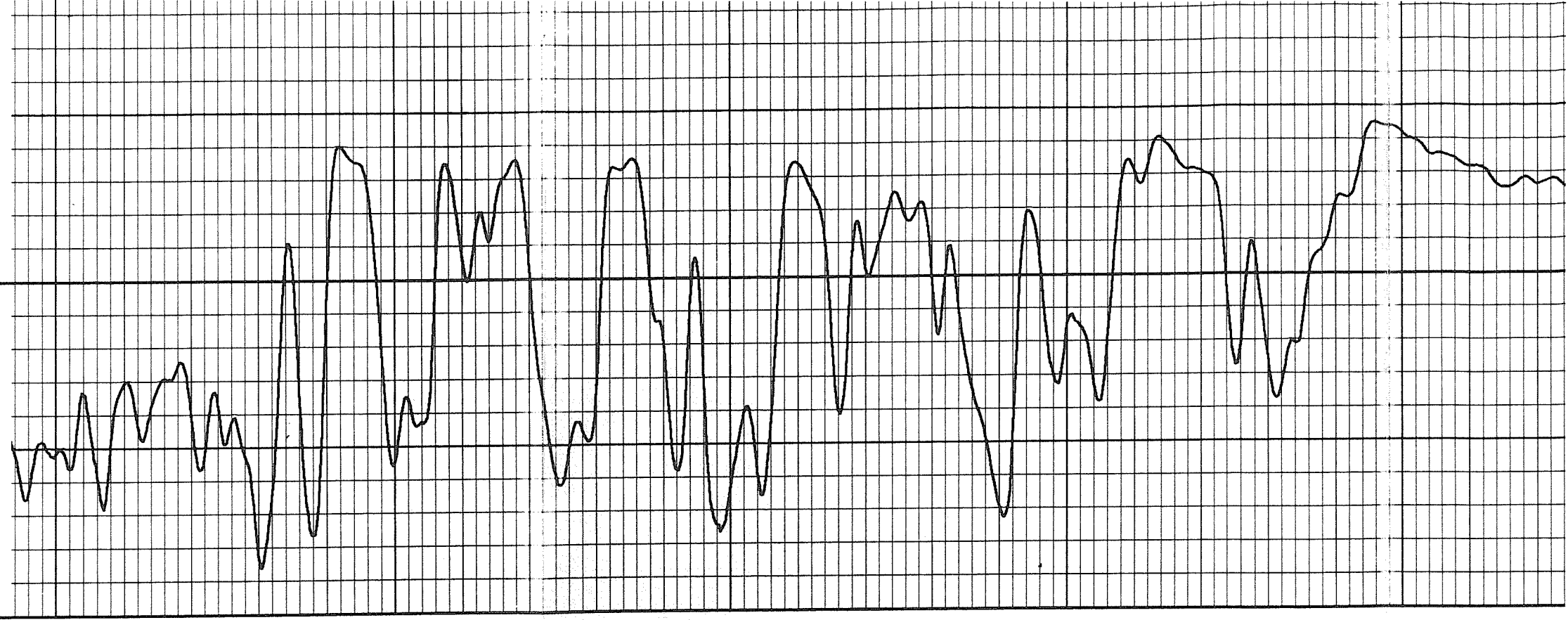
REMARKS: CREW: F.D. MAYERS, B.B. BRIAND, R. ROME

HALLIBURTON LOGGING SERVICES, INC. DOES NOT GUARANTEE THE ACCURACY OF ANY INTERPRETATION OF LOG DATA. CONVERSION OF LOG DATA TO PHYSICAL ROCK PARAMETERS OR RECOMMENDATIONS WHICH MAY BE GIVEN BY HLS PERSONNEL OR WHICH MAY APPEAR ON THE LOG OR IN ANY OTHER FORM. ANY USER OF SUCH DATA, INTERPRETATIONS, OR RECOMMENDATIONS AGREES THAT HLS IS NOT RESPONSIBLE, EXCEPT WHERE DUE TO GROSS NEGLIGENCE OR WILLFUL MISCONDUCT FOR ANY LOSS, DAMAGES OR EXPENSES RESULTING FROM THE USE THEREOF.

O. COLLAR LOCATOR	30.
	NEUTRON POROSITY % CLIM

NEUTRON POROSITY
% CLIM

30.



3700

3750

3800

3850

3900

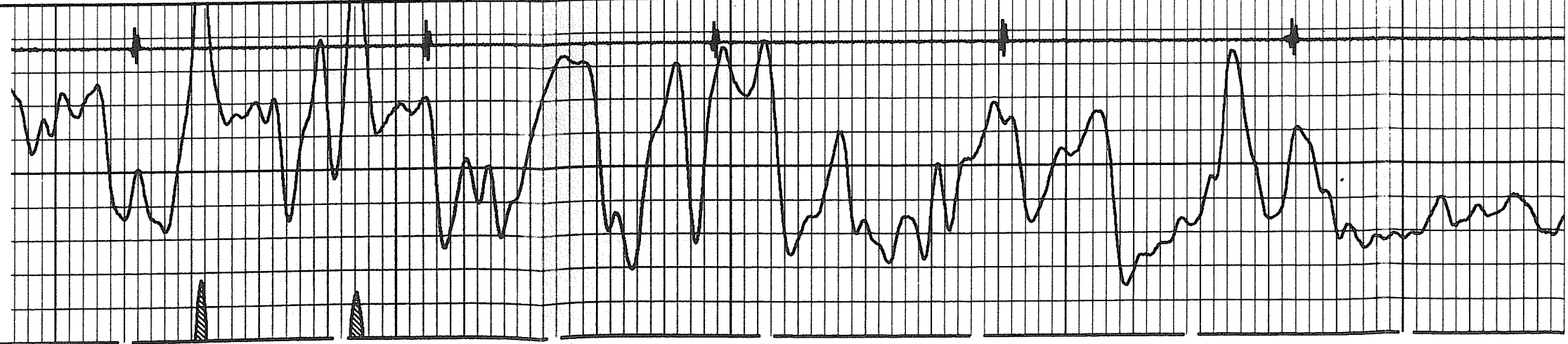
COLLAR LOCATOR

10.

GAMMA #1
API

0.

120.

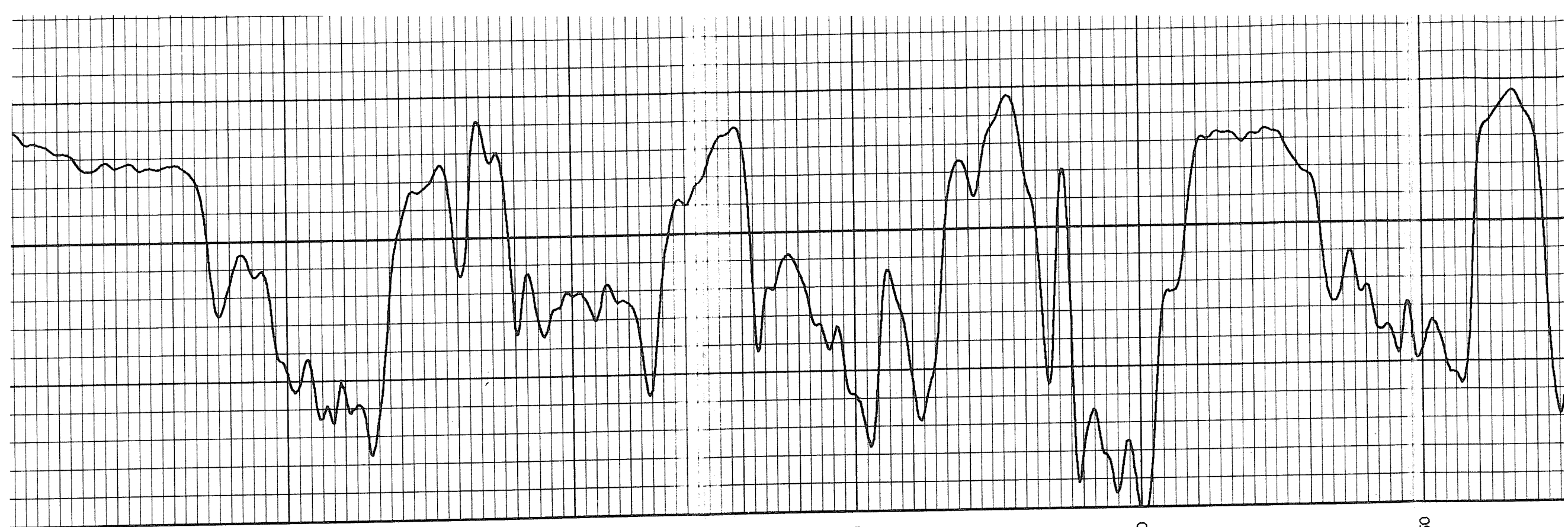


0.

0.

120.

10.



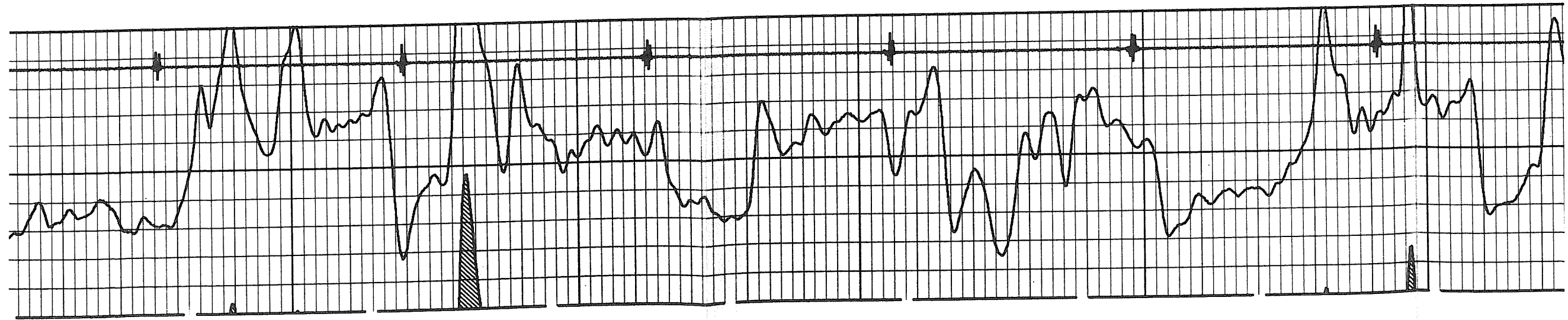
3950

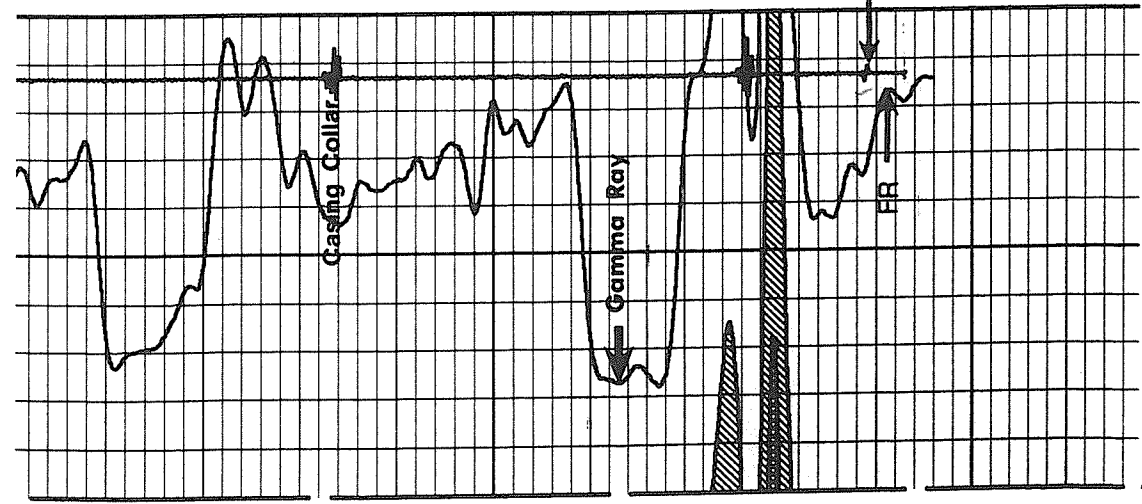
4000

4050

4100

4150





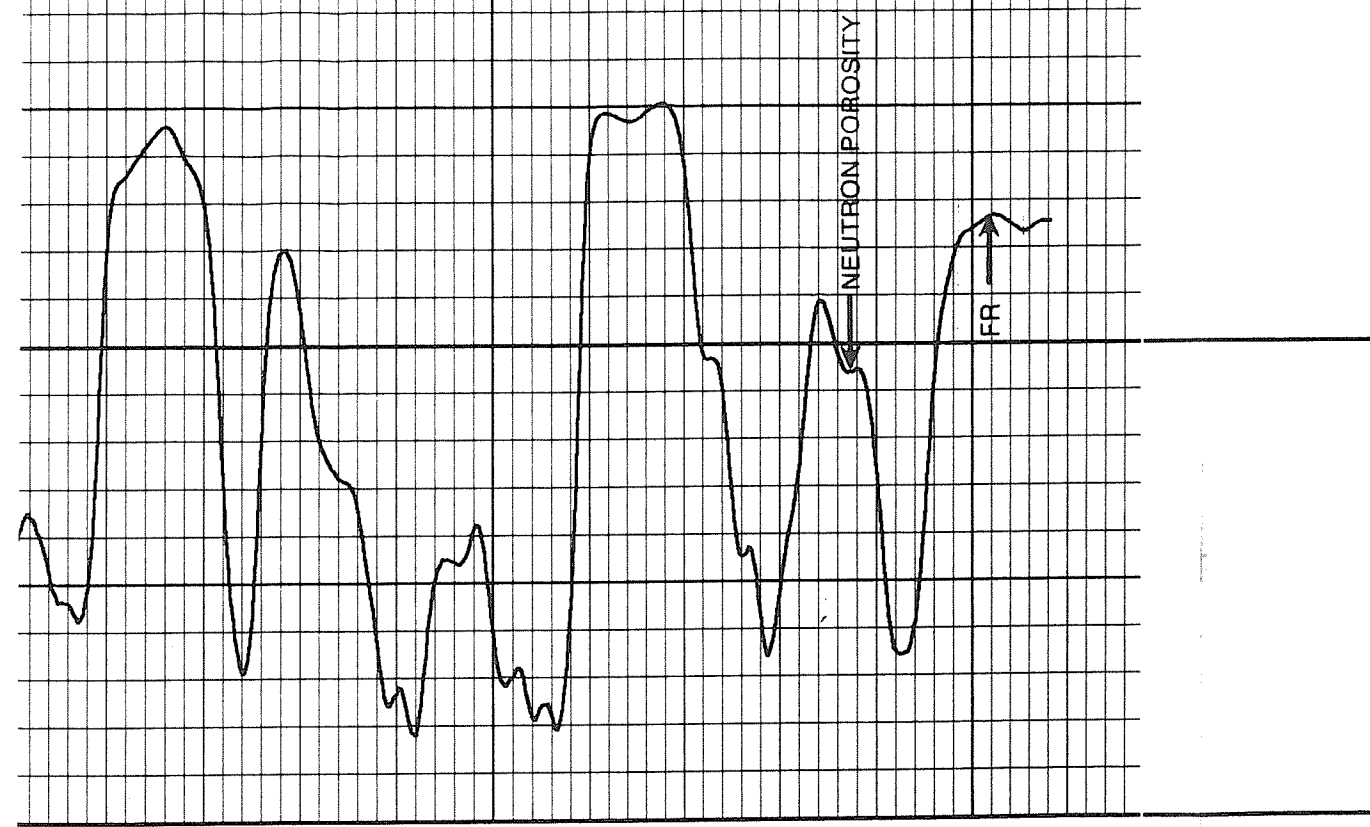
0. GAMMA #1 120.
API

0. COLLAR LOCATOR 10.

4200

FR

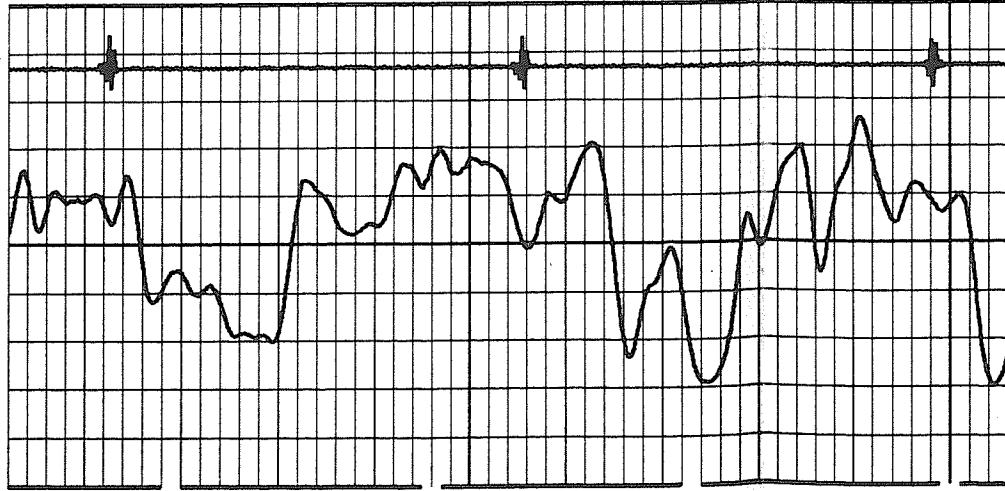
4250



30.

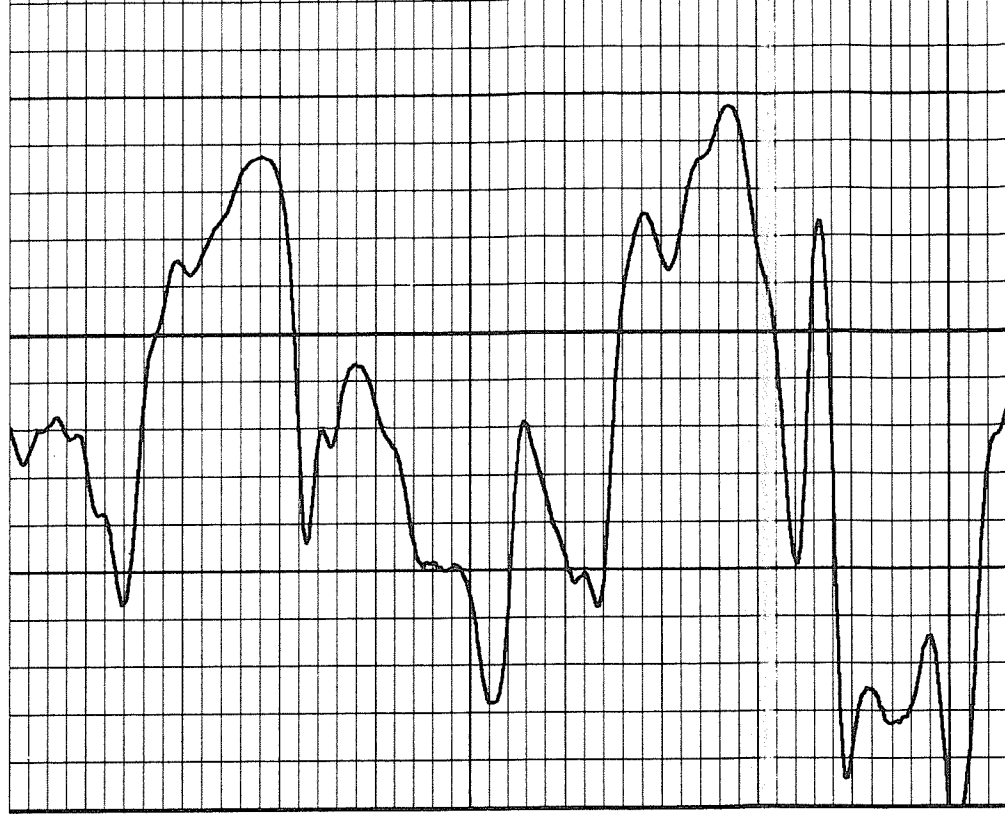
NEUTRON POROSITY
% CLIM

REPEAT SECTION



4050

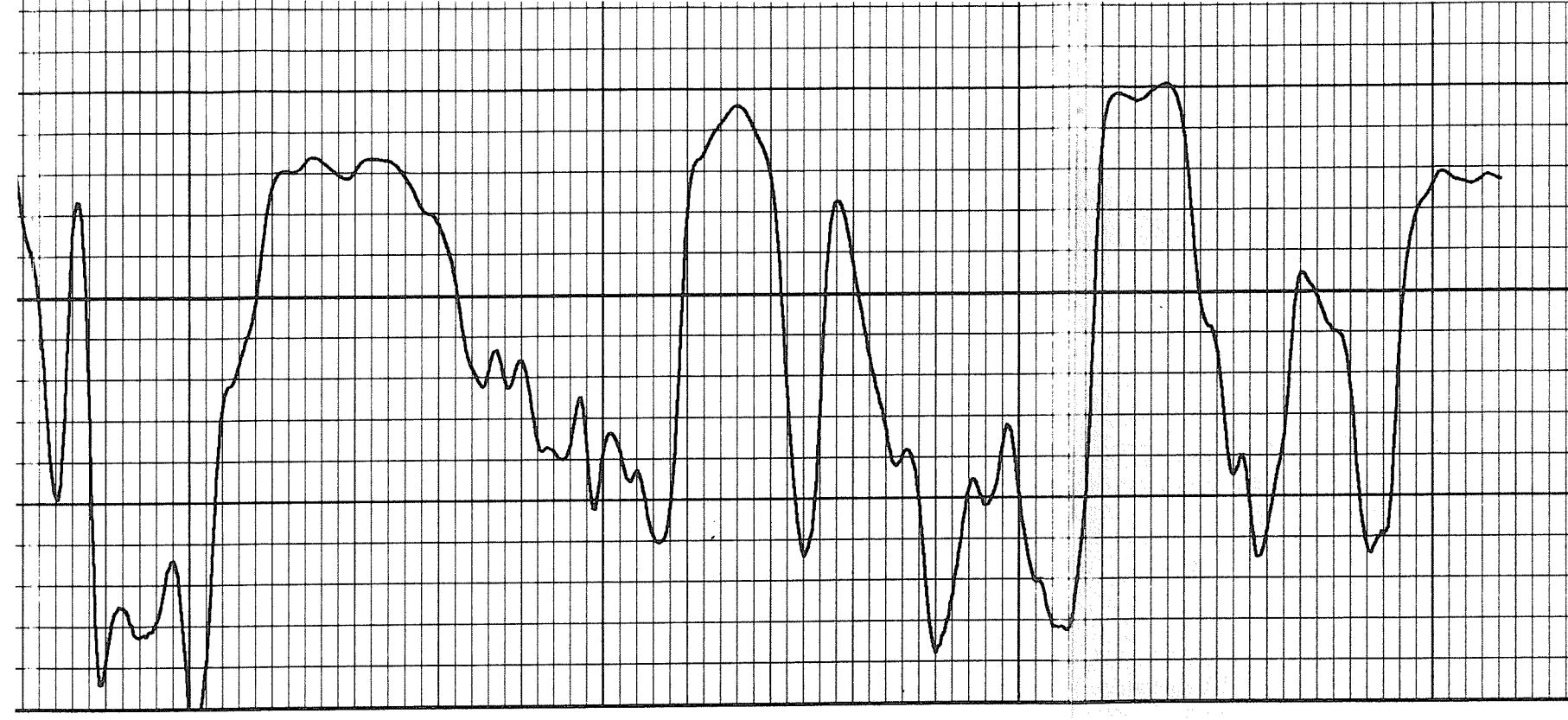
4100





0. GAMMA #1
API 120.

0. COLLAR LOCATOR 10.



30. NEUTRON POROSITY
% CLIM

4100

4150

4200

4250