

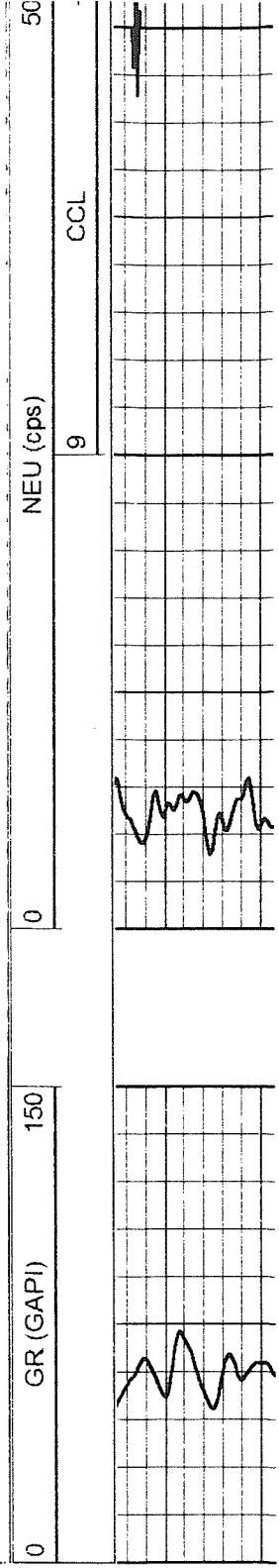
Company Well Field County State	GORE OIL CO. SCHINDLER "B" 5 DOPITA ROOKS KANSAS	Company Well Field County State	GORE OIL CO. SCHINDLER "B" 5 DOPITA ROOKS KANSAS	Company Well Field County State	GORE OIL CO. SCHINDLER "B" 5 DOPITA ROOKS KANSAS	Company Well Field County State	GORE OIL CO. SCHINDLER "B" 5 DOPITA ROOKS KANSAS	Company Well Field County State	GORE OIL CO. SCHINDLER "B" 5 DOPITA ROOKS KANSAS										
Company		GORE OIL CO.		Well		SCHINDLER "B" 5		Field		DOPITA		County		ROOKS		State		KANSAS	
Location:		API # :		Other Services		330' FNL & 2310' FWL		SEC 19 TWP 8S RGE 17W		Permanent Datum		GROUND LEVEL		Elevation		1960		K.B. 1965	
Log Measured From		K.B. 5' AGL		Elevation		1960		Drilling Measured From		KELLY BUSHING		K.B. 1965		D.F.		G.L. 1960			
Date		NOV. 4, 2008		Run Number		ONE		Depth Driller				Depth Logger		1357		Bottom Logged Interval		1356	
Top Log Interval		00		Open Hole Size				Type Fluid		WATER		Density / Viscosity				Max. Recorded Temp.			
Estimated Cement Top				Time Well Ready				Time Logger on Bottom				Equipment Number		PT-05		Location		HAYS	
Recorded By		BILL KLAUS		Witnessed By		MR. LENNY DINKEL		Borehole Record		Tubing Record		Run Number		Bit		From		To	
Run Number		ONE		Bit		12.25		From		00		To		175		Size			
Run Number		TWO		Bit		7.875		From		175		To				Size			
Casing Record		Surface String		Prot. String		Production String		Inner		Size		8 5/8		Wgt/Ft		24#		Top	
Bottom		175		00		5 1/2		00											

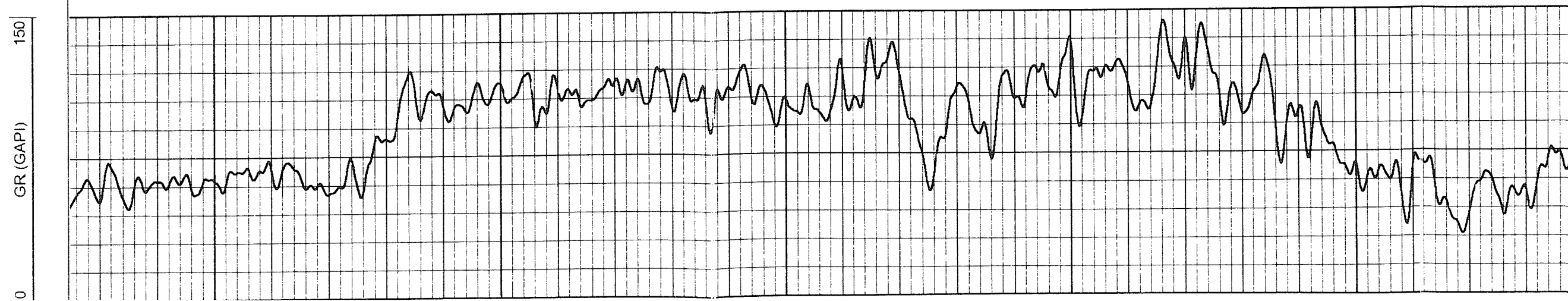
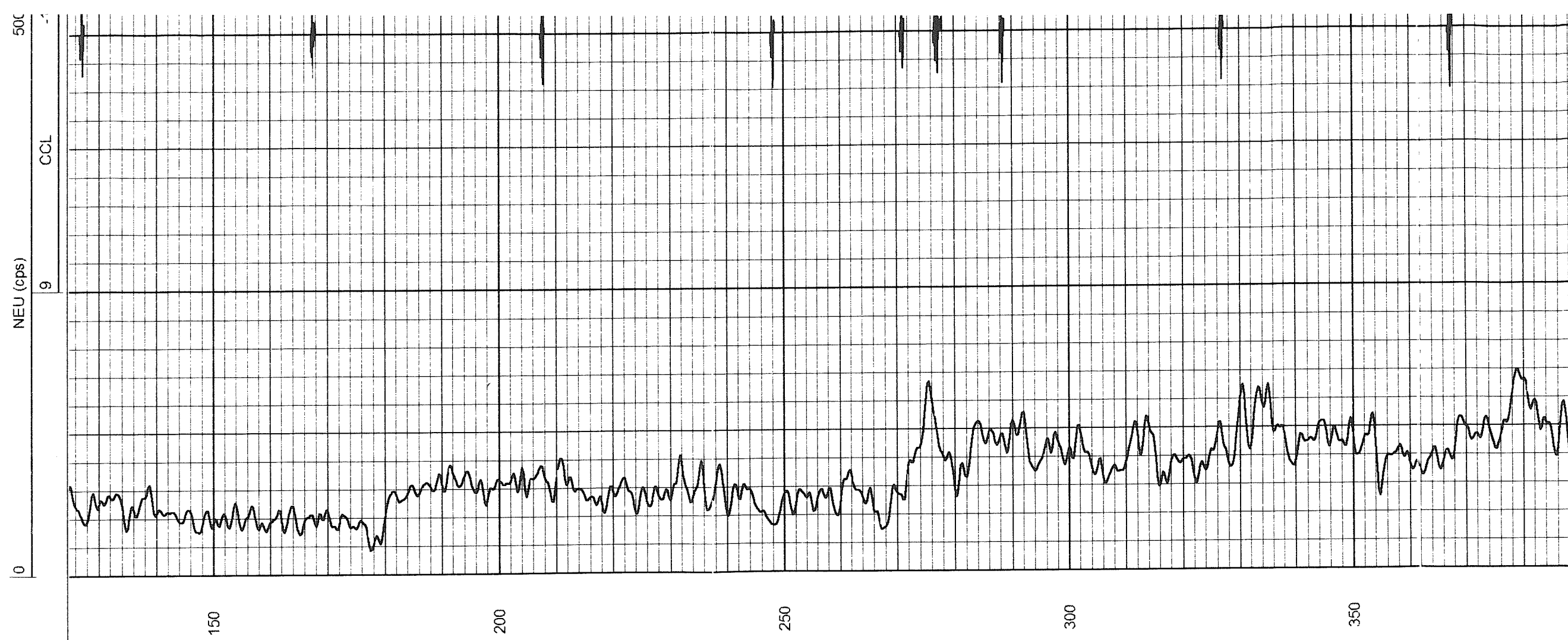
<<< Fold Here >>>

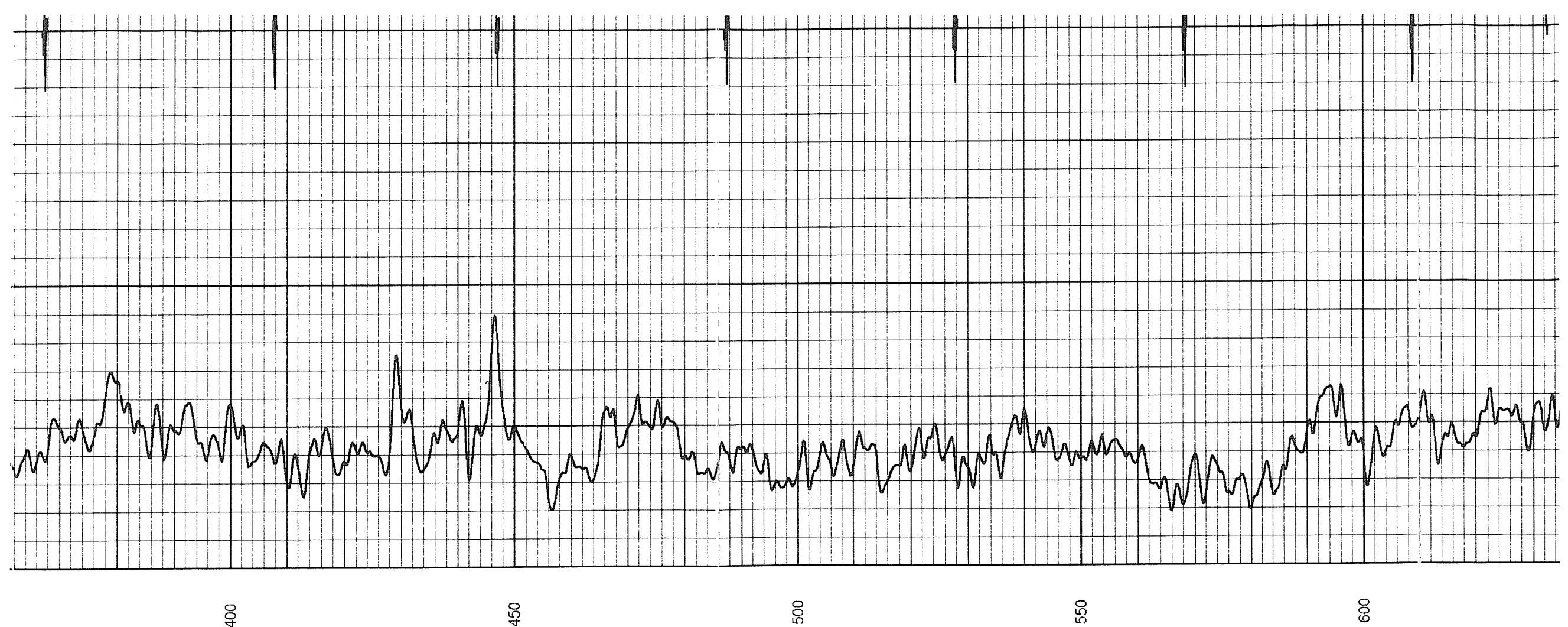
All interpretations are opinions based on inferences from electrical or other measurements and we cannot and do not guarantee the accuracy or correctness of any interpretation, and we shall not, except in the case of gross or willful negligence on our part, be liable or responsible for any loss, costs, damages, or expenses incurred or sustained by anyone resulting from any interpretation made by any of our officers, agents or employees. These interpretations are also subject to our general terms and conditions set out in our current Price Schedule.

Comments

Database File: nov40805.db
 Dataset Pathname: pass3
 Presentation Format: gr-n-ccl
 Dataset Creation: Tue Nov 04 13:03:46 2008 by Log Std Casedhole 06040
 Charted by: Depth in Feet scaled 1:240







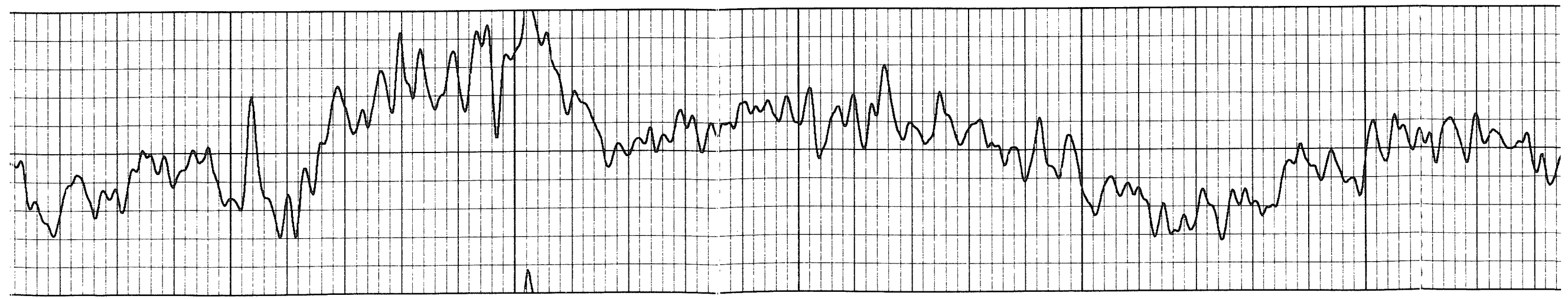
400

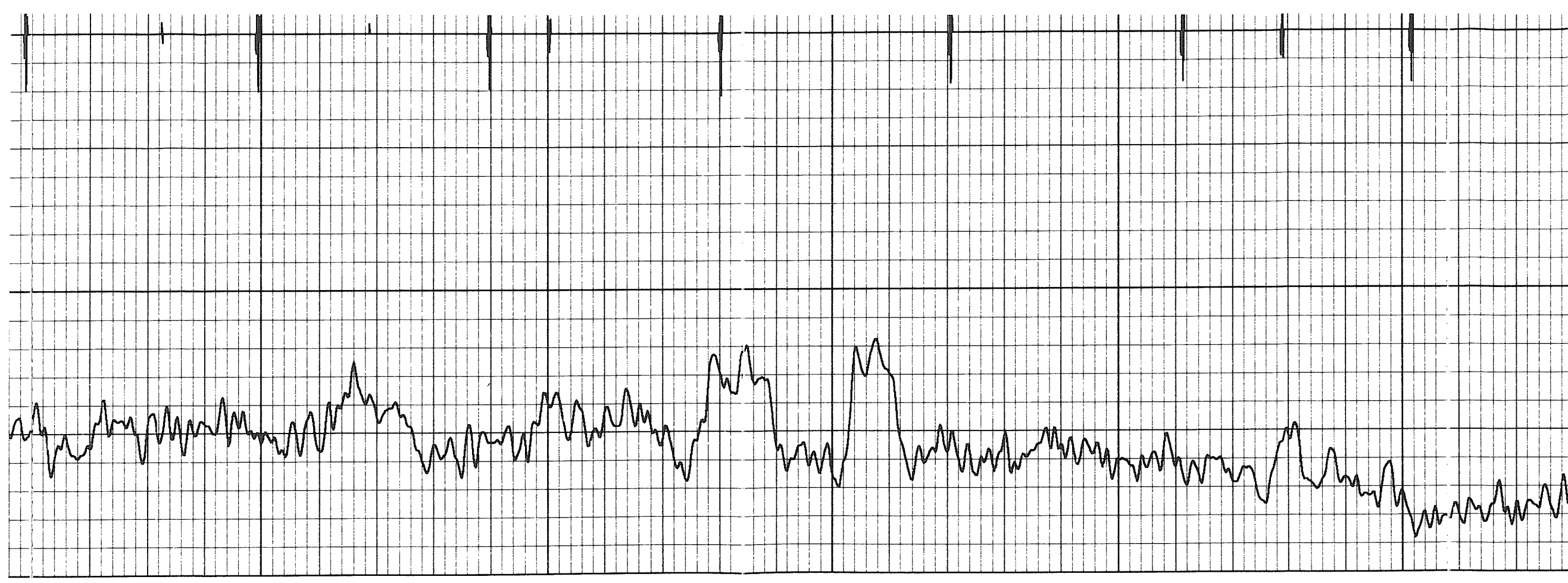
450

500

550

600





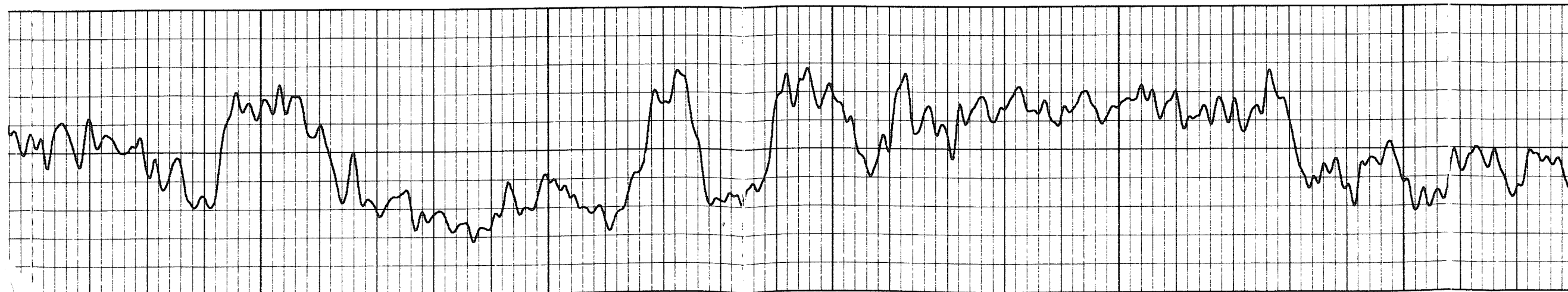
650

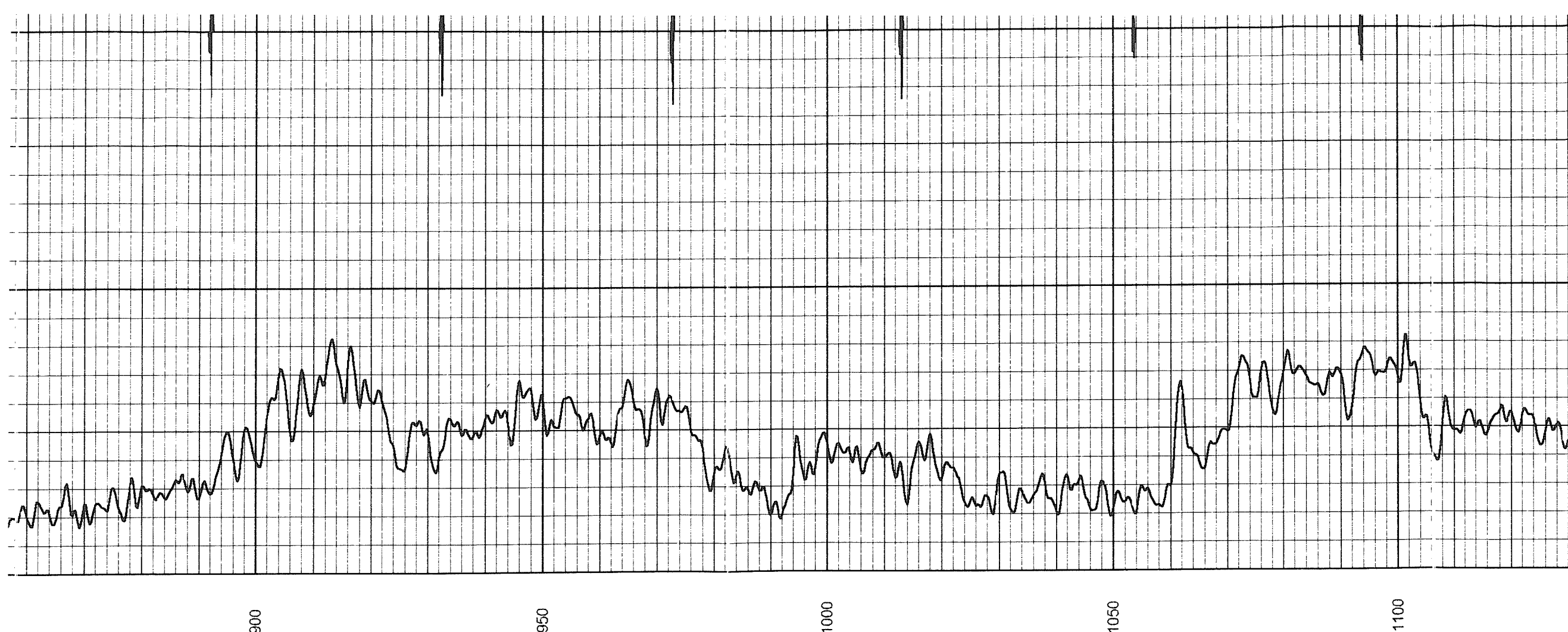
700

750

800

850





900

950

1000

1050

1100

