



DRILL STEM TEST REPORT

Prepared For: **Jaspar Co**

PO Box 1120
Hays, KS 67601

ATTN: Jeff Lawler

Greg Unit #1

21-6S-20W Rooks,KS

Start Date: 2016.10.25 @ 02:55:15

End Date: 2016.10.25 @ 08:19:30

Job Ticket #: 57960 DST #: 1

Trilobite Testing, Inc
PO Box 362 Hays, KS 67601
ph: 785-625-4778 fax: 785-625-5620

Printed: 2016.10.28 @ 10:00:38

Jaspar Co
21-6S-20W Rooks,KS
Greg Unit #1
DST # 1
IKC E-F
2016.10.25



**TRILOBITE
TESTING, INC**

DRILL STEM TEST REPORT

Jaspar Co
PO Box 1120
Hays, KS 67601
ATTN: Jeff Lawler

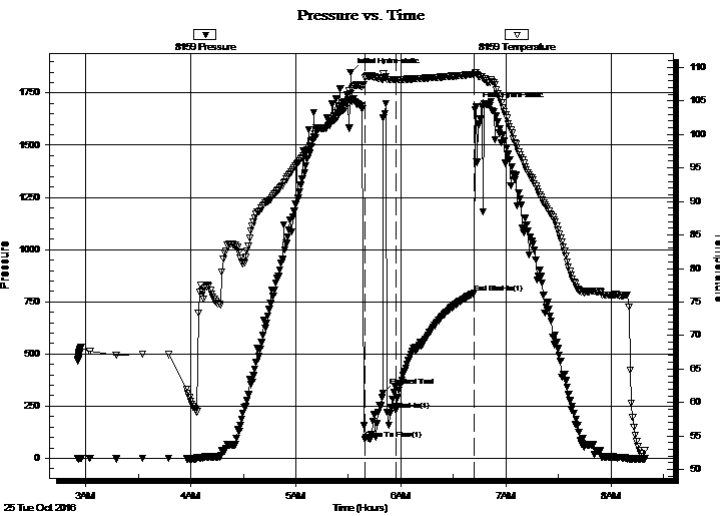
21-6S-20W Rooks,KS
Greg Unit #1
Job Ticket: 57960 **DST#: 1**
Test Start: 2016.10.25 @ 02:55:15

GENERAL INFORMATION:

Formation: **IKC E-F**
Deviated: No Whipstock: ft (KB)
Time Tool Opened: 05:39:30
Time Test Ended: 08:19:30
Interval: **3497.00 ft (KB) To 3520.00 ft (KB) (TVD)**
Total Depth: 3520.00 ft (KB) (TVD)
Hole Diameter: 7.88 inches Hole Condition: Good
Test Type: Conventional Bottom Hole (Initial)
Tester: Leal Cason
Unit No: 74
Reference Elevations: 2193.00 ft (KB)
2185.00 ft (CF)
KB to GR/CF: 8.00 ft

Serial #: 8159 **Inside**
Press@RunDepth: 231.23 psig @ 3498.00 ft (KB) Capacity: 8000.00 psig
Start Date: 2016.10.25 End Date: 2016.10.25 Last Calib.: 2016.10.25
Start Time: 02:55:16 End Time: 08:19:30 Time On Btm: 2016.10.25 @ 05:31:15
Time Off Btm: 2016.10.25 @ 06:43:00

TEST COMMENT: IF: Weak Surface Blow , Flushed Tool, Weak Surface Blow
IS: No Blow Back
Pulled Test



PRESSURE SUMMARY

Time (Min.)	Pressure (psig)	Temp (deg F)	Annotation
0	1848.87	106.08	Initial Hydro-static
9	90.33	108.42	Open To Flow (1)
19	311.13	108.24	Flushed Tool
26	231.23	108.11	Shut-In(1)
71	793.22	108.95	End Shut-In(1)
72	1684.73	109.18	Final Hydro-static

Recovery

Length (ft)	Description	Volume (bbl)
127.00	Mud	0.69

Gas Rates

	Choke (inches)	Pressure (psig)	Gas Rate (Mcf/d)



**TRILOBITE
TESTING, INC**

DRILL STEM TEST REPORT

Jaspar Co
PO Box 1120
Hays, KS 67601
ATTN: Jeff Lawler

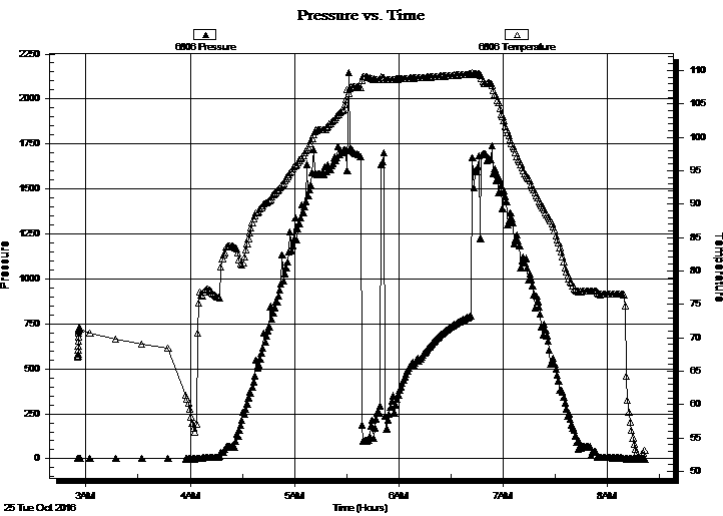
21-6S-20W Rooks,KS
Greg Unit #1
Job Ticket: 57960 **DST#: 1**
Test Start: 2016.10.25 @ 02:55:15

GENERAL INFORMATION:

Formation: **IKC E-F**
Deviated: No Whipstock: ft (KB) Test Type: Conventional Bottom Hole (Initial)
Time Tool Opened: 05:39:30 Tester: Leal Cason
Time Test Ended: 08:19:30 Unit No: 74
Interval: 3497.00 ft (KB) To 3520.00 ft (KB) (TVD) Reference Elevations: 2193.00 ft (KB)
Total Depth: 3520.00 ft (KB) (TVD) 2185.00 ft (CF)
Hole Diameter: 7.88 inches Hole Condition: Good KB to GR/CF: 8.00 ft

Serial #: 6806 Outside
Press@RunDepth: psig @ 3498.00 ft (KB) Capacity: 8000.00 psig
Start Date: 2016.10.25 End Date: 2016.10.25 Last Calib.: 2016.10.25
Start Time: 02:55:16 End Time: 08:22:00 Time On Btm:
Time Off Btm:

TEST COMMENT: IF: Weak Surface Blow , Flushed Tool, Weak Surface Blow
IS: No Blow Back
Pulled Test



PRESSURE SUMMARY

Time (Min.)	Pressure (psig)	Temp (deg F)	Annotation

Recovery

Length (ft)	Description	Volume (bbl)
127.00	Mud	0.69

Gas Rates

	Choke (inches)	Pressure (psig)	Gas Rate (Mcf/d)



**TRILOBITE
TESTING, INC**

DRILL STEM TEST REPORT

TOOL DIAGRAM

Jaspar Co
PO Box 1120
Hays, KS 67601
ATTN: Jeff Lawler

21-6S-20W Rooks,KS
Greg Unit #1
Job Ticket: 57960 **DST#: 1**
Test Start: 2016.10.25 @ 02:55:15

Tool Information

Drill Pipe:	Length: 3382.00 ft	Diameter: 3.80 inches	Volume: 47.44 bbl	Tool Weight:	2100.00 lb
Heavy Wt. Pipe:	Length: 0.00 ft	Diameter: 0.00 inches	Volume: 0.00 bbl	Weight set on Packer:	25000.00 lb
Drill Collar:	Length: 120.00 ft	Diameter: 2.25 inches	Volume: 0.59 bbl	Weight to Pull Loose:	80000.00 lb
			<u>Total Volume: 48.03 bbl</u>	Tool Chased	15.00 ft
Drill Pipe Above KB:	24.00 ft			String Weight: Initial	58000.00 lb
Depth to Top Packer:	3497.00 ft			Final	58000.00 lb
Depth to Bottom Packer:	ft				
Interval between Packers:	23.00 ft				
Tool Length:	42.00 ft				
Number of Packers:	2	Diameter: 6.75 inches			

Tool Comments: Tool Slid 15 feet

Tool Description	Length (ft)	Serial No.	Position	Depth (ft)	Accum. Lengths
-------------------------	--------------------	-------------------	-----------------	-------------------	-----------------------

Shut In Tool	5.00			3483.00	
Hydraulic tool	5.00			3488.00	
Packer	5.00			3493.00	19.00 Bottom Of Top Packer
Packer	4.00			3497.00	
Stubb	1.00			3498.00	
Recorder	0.00	8159	Inside	3498.00	
Recorder	0.00	6806	Outside	3498.00	
Perforations	19.00			3517.00	
Bullnose	3.00			3520.00	23.00 Bottom Packers & Anchor
Total Tool Length:	42.00				



**TRILOBITE
TESTING, INC**

DRILL STEM TEST REPORT

FLUID SUMMARY

Jaspar Co

21-6S-20W Rooks,KS

PO Box 1120
Hays, KS 67601

Greg Unit #1

Job Ticket: 57960

DST#: 1

ATTN: Jeff Lawler

Test Start: 2016.10.25 @ 02:55:15

Mud and Cushion Information

Mud Type: Gel Chem

Cushion Type:

Oil API:

deg API

Mud Weight: 9.00 lb/gal

Cushion Length: ft

Water Salinity: ppm

Viscosity: 55.00 sec/qt

Cushion Volume: bbl

Water Loss: 7.18 in³

Gas Cushion Type:

Resistivity: ohm.m

Gas Cushion Pressure: psig

Salinity: 750.00 ppm

Filter Cake: 0.02 inches

Recovery Information

Recovery Table

Length ft	Description	Volume bbl
127.00	Mud	0.688

Total Length: 127.00 ft Total Volume: 0.688 bbl

Num Fluid Samples: 0

Num Gas Bombs: 0

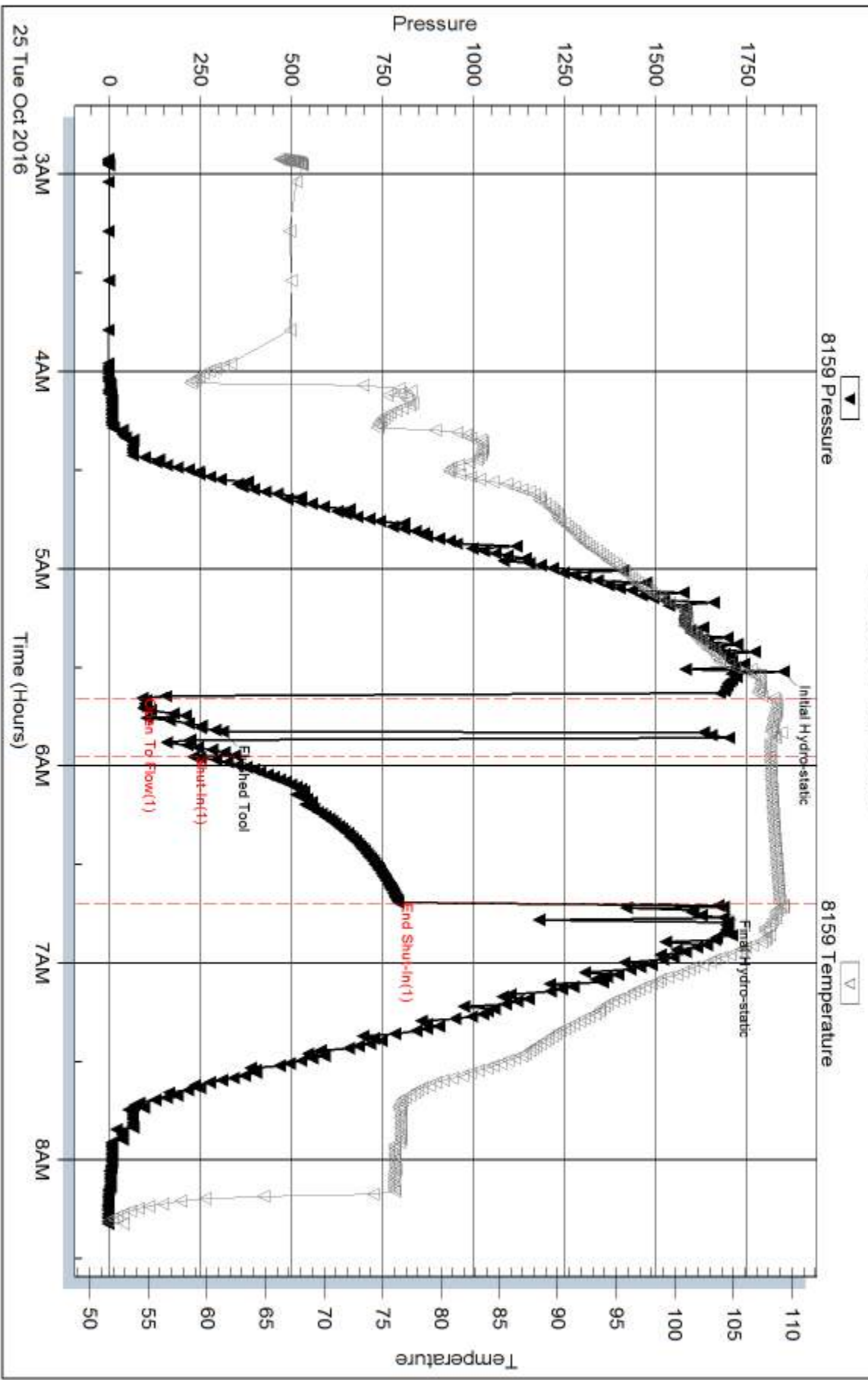
Serial #:

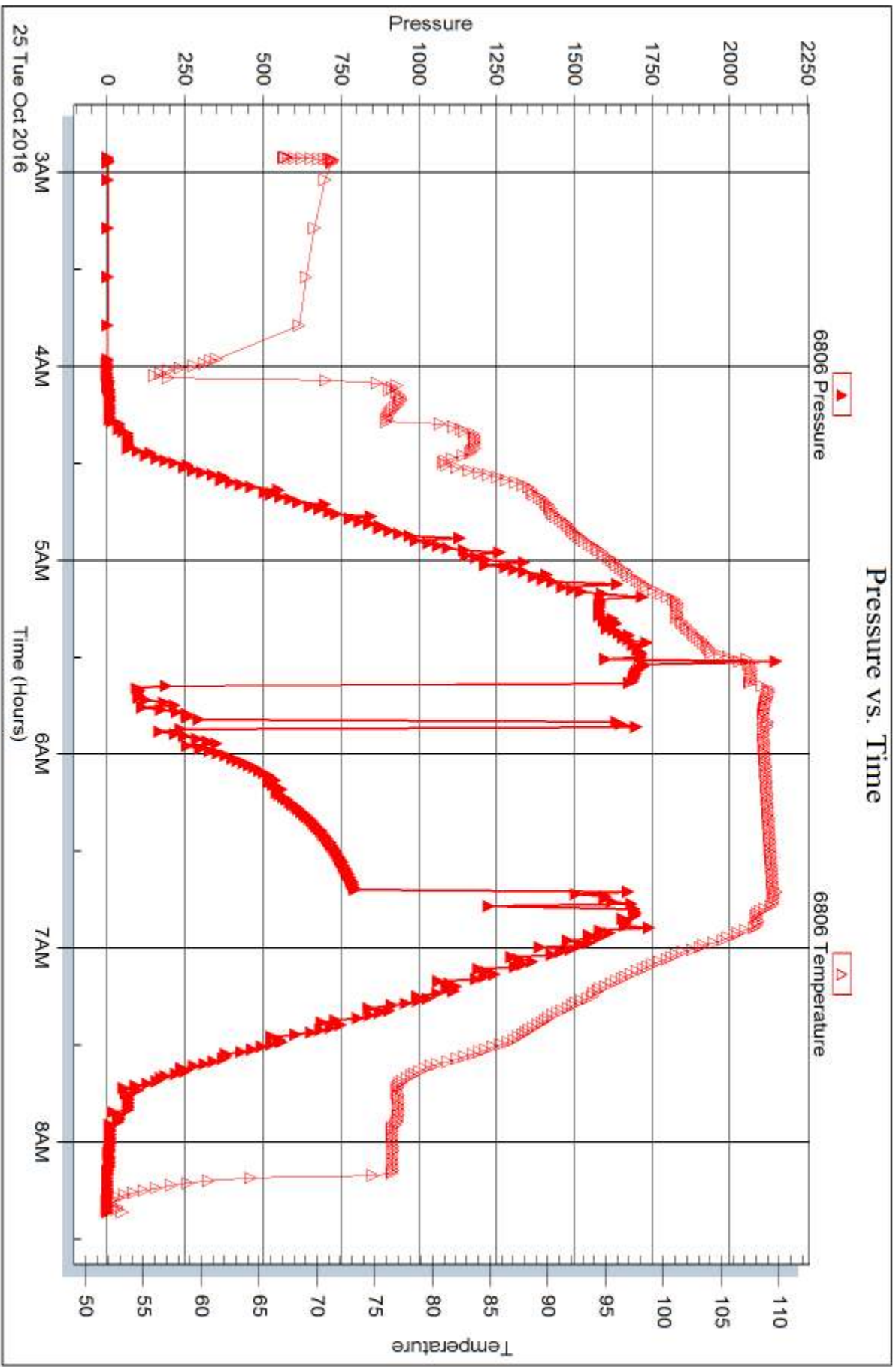
Laboratory Name:

Laboratory Location:

Recovery Comments:

Pressure vs. Time







DRILL STEM TEST REPORT

Prepared For: **Jaspar Co**

PO Box 1120
Hays, KS 67601

ATTN: Jeff Lawler

Greg Unit #1

21-6S-20W Rooks,KS

Start Date: 2016.10.25 @ 12:55:15

End Date: 2016.10.25 @ 17:35:30

Job Ticket #: 57961 DST #: 2

Trilobite Testing, Inc
PO Box 362 Hays, KS 67601
ph: 785-625-4778 fax: 785-625-5620

Printed: 2016.10.28 @ 10:00:17



**TRILOBITE
TESTING, INC**

DRILL STEM TEST REPORT

Jaspar Co
PO Box 1120
Hays, KS 67601
ATTN: Jeff Lawler

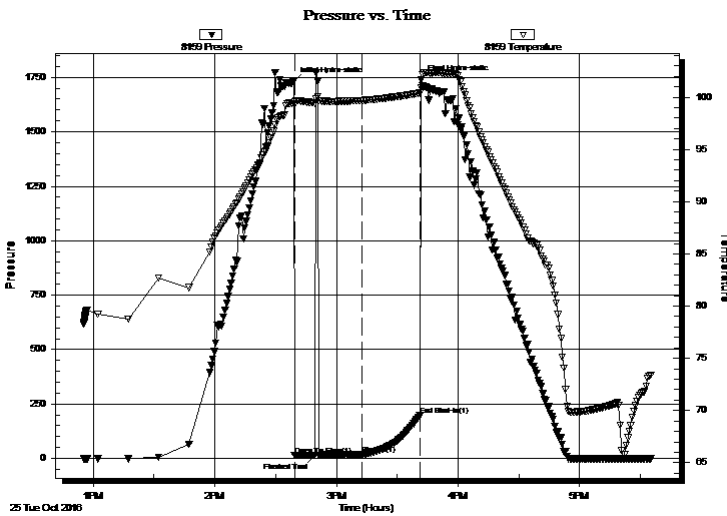
21-6S-20W Rooks,KS
Greg Unit #1
Job Ticket: 57961 **DST#: 2**
Test Start: 2016.10.25 @ 12:55:15

GENERAL INFORMATION:

Formation: **LKC E-F**
Deviated: No Whipstock: ft (KB) Test Type: Conventional Bottom Hole (Reset)
Time Tool Opened: 14:39:15 Tester: Leal Cason
Time Test Ended: 17:35:30 Unit No: 74
Interval: 3497.00 ft (KB) To 3520.00 ft (KB) (TVD) Reference Elevations: 2193.00 ft (KB)
Total Depth: 3520.00 ft (KB) (TVD) 2185.00 ft (CF)
Hole Diameter: 7.88 inches Hole Condition: Good KB to GR/CF: 8.00 ft

Serial #: 8159 Inside
Press@RunDepth: 17.72 psig @ 3498.00 ft (KB) Capacity: 8000.00 psig
Start Date: 2016.10.25 End Date: 2016.10.25 Last Calib.: 2016.10.25
Start Time: 12:55:16 End Time: 17:35:30 Time On Btm: 2016.10.25 @ 14:38:45
Time Off Btm: 2016.10.25 @ 15:41:45

TEST COMMENT: IF: Weak Surface Blow , Dead @ 4 minutes, Flushed Tool, Weak Surface Blow , Dead @ 5 minutes
FSI: No Blow



PRESSURE SUMMARY

Time (Min.)	Pressure (psig)	Temp (deg F)	Annotation
0	1729.31	99.42	Initial Hydro-static
1	13.88	99.34	Open To Flow (1)
11	13.84	99.44	Flushed Tool
34	17.72	99.69	Shut-In(1)
63	199.66	100.40	End Shut-In(1)
63	1738.59	100.89	Final Hydro-static

Recovery

Length (ft)	Description	Volume (bbl)
2.00	Mud	0.01

* Recovery from multiple tests

Gas Rates

	Choke (inches)	Pressure (psig)	Gas Rate (Mcf/d)



TRILOBITE TESTING, INC

DRILL STEM TEST REPORT

Jaspar Co
 PO Box 1120
 Hays, KS 67601
 ATTN: Jeff Lawler

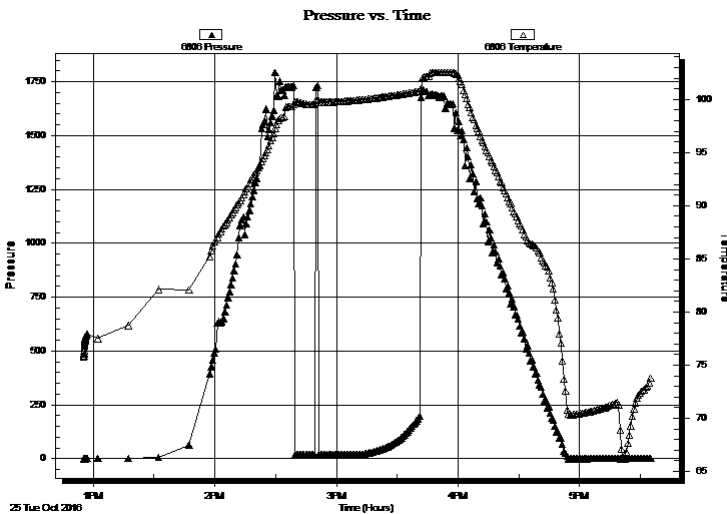
21-6S-20W Rooks, KS
Greg Unit #1
 Job Ticket: 57961 **DST#: 2**
 Test Start: 2016.10.25 @ 12:55:15

GENERAL INFORMATION:

Formation: **LKC E-F**
 Deviated: No Whipstock: ft (KB)
 Time Tool Opened: 14:39:15
 Time Test Ended: 17:35:30
 Interval: **3497.00 ft (KB) To 3520.00 ft (KB) (TVD)**
 Total Depth: 3520.00 ft (KB) (TVD)
 Hole Diameter: 7.88 inches Hole Condition: Good
 Test Type: Conventional Bottom Hole (Reset)
 Tester: Leal Cason
 Unit No: 74
 Reference Elevations: 2193.00 ft (KB)
 2185.00 ft (CF)
 KB to GR/CF: 8.00 ft

Serial #: 6806 Outside
 Press@RunDepth: psig @ 3498.00 ft (KB) Capacity: 8000.00 psig
 Start Date: 2016.10.25 End Date: 2016.10.25 Last Calib.: 2016.10.25
 Start Time: 12:55:16 End Time: 17:35:15 Time On Btm:
 Time Off Btm:

TEST COMMENT: IF: Weak Surface Blow , Dead @ 4 minutes, Flushed Tool, Weak Surface Blow , Dead @ 5 minutes
 FSI: No Blow



PRESSURE SUMMARY

Time (Min.)	Pressure (psig)	Temp (deg F)	Annotation

Recovery

Length (ft)	Description	Volume (bbl)
2.00	Mud	0.01

* Recovery from multiple tests

Gas Rates

Choke (inches)	Pressure (psig)	Gas Rate (Mcf/d)



**TRILOBITE
TESTING, INC**

DRILL STEM TEST REPORT

TOOL DIAGRAM

Jaspar Co
PO Box 1120
Hays, KS 67601
ATTN: Jeff Lawler

21-6S-20W Rooks,KS
Greg Unit #1
Job Ticket: 57961 **DST#: 2**
Test Start: 2016.10.25 @ 12:55:15

Tool Information

Drill Pipe:	Length: 3382.00 ft	Diameter: 3.80 inches	Volume: 47.44 bbl	Tool Weight: 2100.00 lb
Heavy Wt. Pipe:	Length: 0.00 ft	Diameter: 0.00 inches	Volume: 0.00 bbl	Weight set on Packer: 25000.00 lb
Drill Collar:	Length: 120.00 ft	Diameter: 2.25 inches	Volume: 0.59 bbl	Weight to Pull Loose: 80000.00 lb
		Total Volume: 48.03 bbl		Tool Chased 10.00 ft
Drill Pipe Above KB:	24.00 ft			String Weight: Initial 50000.00 lb
Depth to Top Packer:	3497.00 ft			Final 50000.00 lb
Depth to Bottom Packer:	ft			
Interval between Packers:	23.00 ft			
Tool Length:	42.00 ft			
Number of Packers:	2	Diameter: 6.75 inches		

Tool Comments: Tool Slid 10 Feet

Tool Description	Length (ft)	Serial No.	Position	Depth (ft)	Accum. Lengths
------------------	-------------	------------	----------	------------	----------------

Shut In Tool	5.00			3483.00	
Hydraulic tool	5.00			3488.00	
Packer	5.00			3493.00	19.00 Bottom Of Top Packer
Packer	4.00			3497.00	
Stubb	1.00			3498.00	
Recorder	0.00	8159	Inside	3498.00	
Recorder	0.00	6806	Outside	3498.00	
Perforations	19.00			3517.00	
Bullnose	3.00			3520.00	23.00 Bottom Packers & Anchor
Total Tool Length:	42.00				



**TRILOBITE
TESTING, INC**

DRILL STEM TEST REPORT

FLUID SUMMARY

Jaspar Co
PO Box 1120
Hays, KS 67601
ATTN: Jeff Lawler

21-6S-20W Rooks,KS
Greg Unit #1
Job Ticket: 57961 **DST#: 2**
Test Start: 2016.10.25 @ 12:55:15

Mud and Cushion Information

Mud Type: Gel Chem	Cushion Type:	Oil API:	deg API
Mud Weight: 9.00 lb/gal	Cushion Length: ft	Water Salinity:	ppm
Viscosity: 55.00 sec/qt	Cushion Volume: bbl		
Water Loss: 7.17 in ³	Gas Cushion Type:		
Resistivity: ohm.m	Gas Cushion Pressure: psig		
Salinity: 750.00 ppm			
Filter Cake: 0.02 inches			

Recovery Information

Recovery Table

Length ft	Description	Volume bbl
2.00	Mud	0.010

Total Length: 2.00 ft Total Volume: 0.010 bbl
 Num Fluid Samples: 0 Num Gas Bombs: 0 Serial #:
 Laboratory Name: Laboratory Location:
 Recovery Comments:

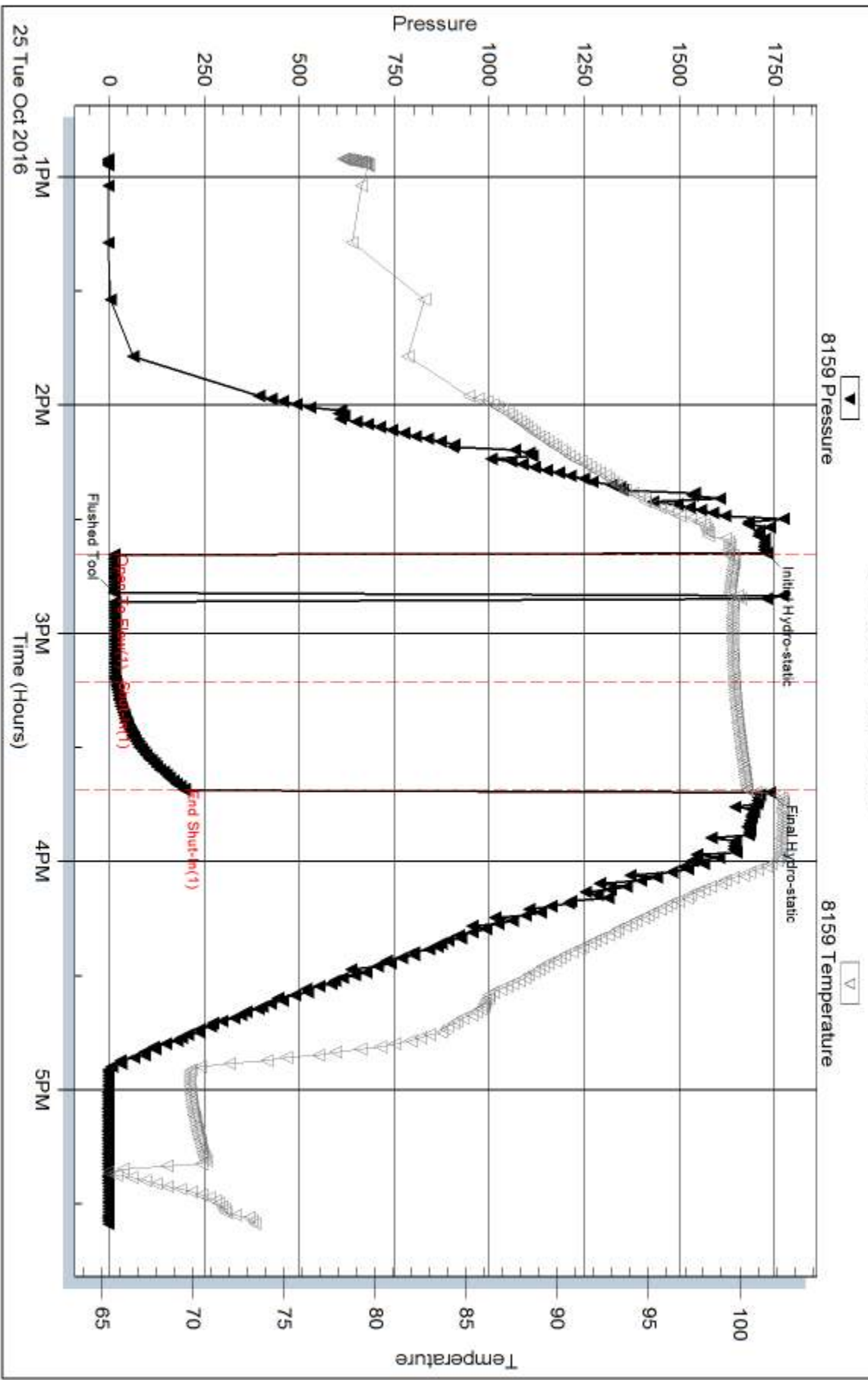
Serial #: 8159

Inside Jasper Co

Greg Unit #1

DST Test Number: 2

Pressure vs. Time

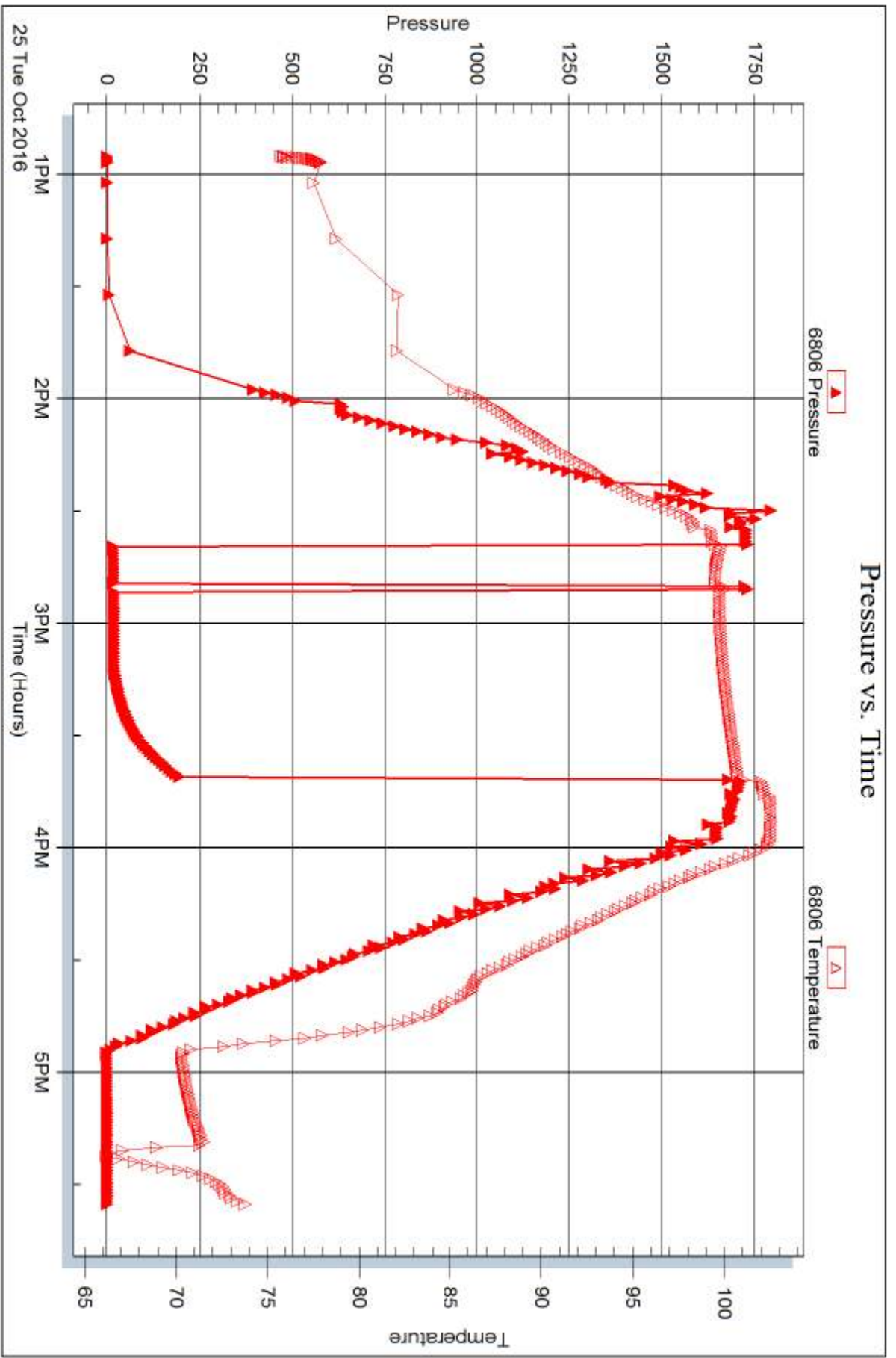


Serial #: 6806

Outside Jasper Co

Greg Unit #1

DST Test Number: 2





DRILL STEM TEST REPORT

Prepared For: **Jaspar Co**

PO Box 1120
Hays, KS 67601

ATTN: Jeff Lawler

Greg Unit #1

21-6S-20W Rooks,KS

Start Date: 2016.10.26 @ 03:30:15

End Date: 2016.10.26 @ 09:11:45

Job Ticket #: 57962 DST #: 3

Trilobite Testing, Inc

PO Box 362 Hays, KS 67601

ph: 785-625-4778 fax: 785-625-5620

Printed: 2016.10.28 @ 09:59:53



**TRILOBITE
TESTING, INC**

DRILL STEM TEST REPORT

Jaspar Co
PO Box 1120
Hays, KS 67601
ATTN: Jeff Lawler

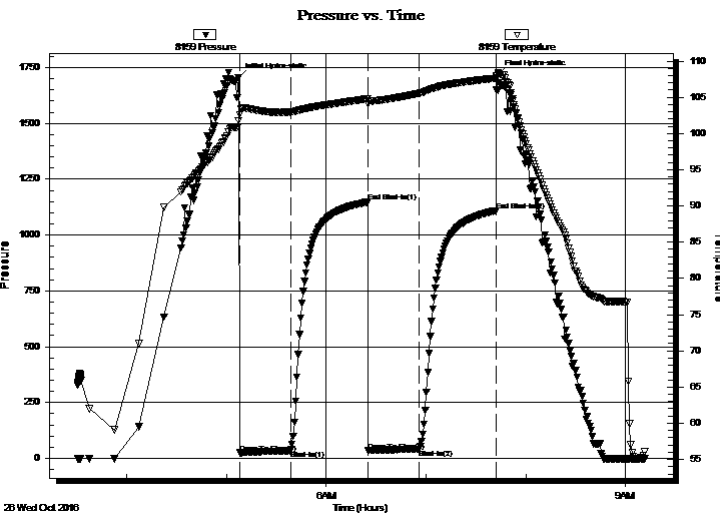
21-6S-20W Rooks,KS
Greg Unit #1
Job Ticket: 57962 **DST#: 3**
Test Start: 2016.10.26 @ 03:30:15

GENERAL INFORMATION:

Formation: **LKC H-1**
Deviated: No Whipstock: ft (KB)
Time Tool Opened: 05:07:45
Time Test Ended: 09:11:45
Interval: **3545.00 ft (KB) To 3590.00 ft (KB) (TVD)**
Total Depth: 3590.00 ft (KB) (TVD)
Hole Diameter: 7.88 inches Hole Condition: Good
Test Type: Conventional Bottom Hole (Reset)
Tester: Leal Cason
Unit No: 74
Reference Elevations: 2193.00 ft (KB)
2185.00 ft (CF)
KB to GR/CF: 8.00 ft

Serial #: 8159 Inside
Press@RunDepth: 41.14 psig @ 3546.00 ft (KB) Capacity: 8000.00 psig
Start Date: 2016.10.26 End Date: 2016.10.26 Last Calib.: 2016.10.26
Start Time: 03:30:16 End Time: 09:11:45 Time On Btm: 2016.10.26 @ 05:07:00
Time Off Btm: 2016.10.26 @ 07:43:30

TEST COMMENT: IF: Weak 1" Blow
IS: No Blow Back
FF: No Blow
FS: No Blow Back



PRESSURE SUMMARY

Time (Min.)	Pressure (psig)	Temp (deg F)	Annotation
0	1705.21	101.78	Initial Hydro-static
1	24.63	102.62	Open To Flow (1)
32	34.91	102.96	Shut-In(1)
78	1148.11	104.80	End Shut-In(1)
79	33.65	104.11	Open To Flow (2)
109	41.14	105.55	Shut-In(2)
155	1109.54	107.64	End Shut-In(2)
157	1719.76	108.44	Final Hydro-static

Recovery

Length (ft)	Description	Volume (bbl)
55.00	Mud	0.27

* Recovery from multiple tests

Gas Rates

	Choke (inches)	Pressure (psig)	Gas Rate (Mcf/d)



**TRILOBITE
TESTING, INC**

DRILL STEM TEST REPORT

TOOL DIAGRAM

Jaspar Co
PO Box 1120
Hays, KS 67601
ATTN: Jeff Lawler

21-6S-20W Rooks,KS
Greg Unit #1
Job Ticket: 57962 **DST#: 3**
Test Start: 2016.10.26 @ 03:30:15

Tool Information

Drill Pipe:	Length: 3414.00 ft	Diameter: 3.80 inches	Volume: 47.89 bbl	Tool Weight:	2100.00 lb
Heavy Wt. Pipe:	Length: 0.00 ft	Diameter: 0.00 inches	Volume: 0.00 bbl	Weight set on Packer:	25000.00 lb
Drill Collar:	Length: 120.00 ft	Diameter: 2.25 inches	Volume: 0.59 bbl	Weight to Pull Loose:	60000.00 lb
			<u>Total Volume: 48.48 bbl</u>	Tool Chased	ft
Drill Pipe Above KB:	8.00 ft			String Weight: Initial	50000.00 lb
Depth to Top Packer:	3545.00 ft			Final	50000.00 lb
Depth to Bottom Packer:	ft				
Interval between Packers:	45.00 ft				
Tool Length:	64.00 ft				
Number of Packers:	2	Diameter: 6.75 inches			

Tool Comments:

Tool Description	Length (ft)	Serial No.	Position	Depth (ft)	Accum. Lengths
-------------------------	--------------------	-------------------	-----------------	-------------------	-----------------------

Shut In Tool	5.00			3531.00	
Hydraulic tool	5.00			3536.00	
Packer	5.00			3541.00	19.00 Bottom Of Top Packer
Packer	4.00			3545.00	
Stubb	1.00			3546.00	
Recorder	0.00	8159	Inside	3546.00	
Recorder	0.00	6806	Outside	3546.00	
Perforations	8.00			3554.00	
Change Over Sub	1.00			3555.00	
Drill Pipe	31.00			3586.00	
Change Over Sub	1.00			3587.00	
Bullnose	3.00			3590.00	45.00 Bottom Packers & Anchor

Total Tool Length: 64.00



**TRILOBITE
TESTING, INC**

DRILL STEM TEST REPORT

FLUID SUMMARY

Jaspar Co
PO Box 1120
Hays, KS 67601
ATTN: Jeff Lawler

21-6S-20W Rooks,KS
Greg Unit #1
Job Ticket: 57962 **DST#: 3**
Test Start: 2016.10.26 @ 03:30:15

Mud and Cushion Information

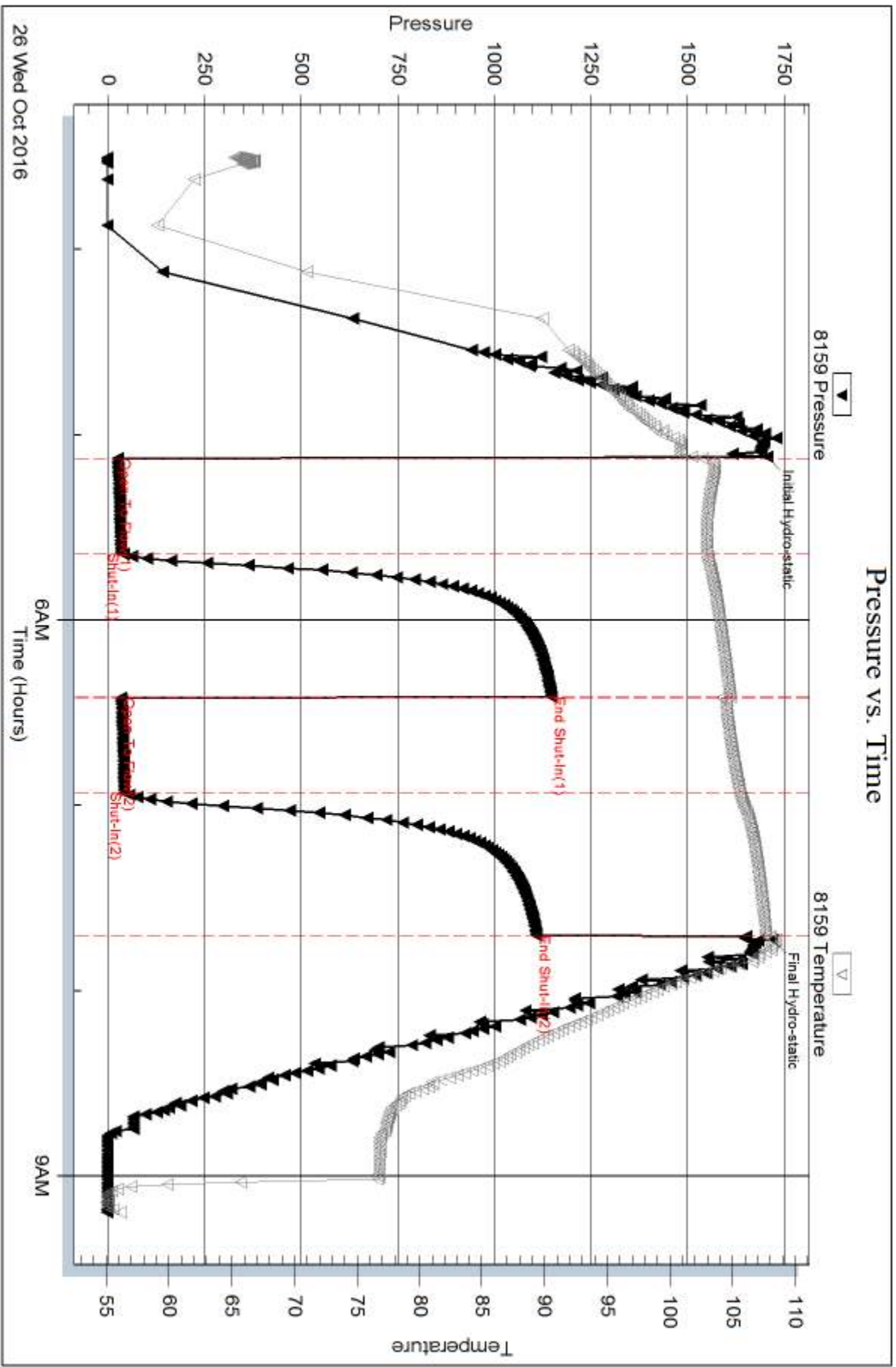
Mud Type: Gel Chem	Cushion Type:	Oil API:	deg API
Mud Weight: 9.00 lb/gal	Cushion Length: ft	Water Salinity:	ppm
Viscosity: 55.00 sec/qt	Cushion Volume: bbl		
Water Loss: 7.17 in ³	Gas Cushion Type:		
Resistivity: ohm.m	Gas Cushion Pressure: psig		
Salinity: 750.00 ppm			
Filter Cake: 0.02 inches			

Recovery Information

Recovery Table

Length ft	Description	Volume bbl
55.00	Mud	0.270

Total Length: 55.00 ft Total Volume: 0.270 bbl
Num Fluid Samples: 0 Num Gas Bombs: 0 Serial #:
Laboratory Name: Laboratory Location:
Recovery Comments:



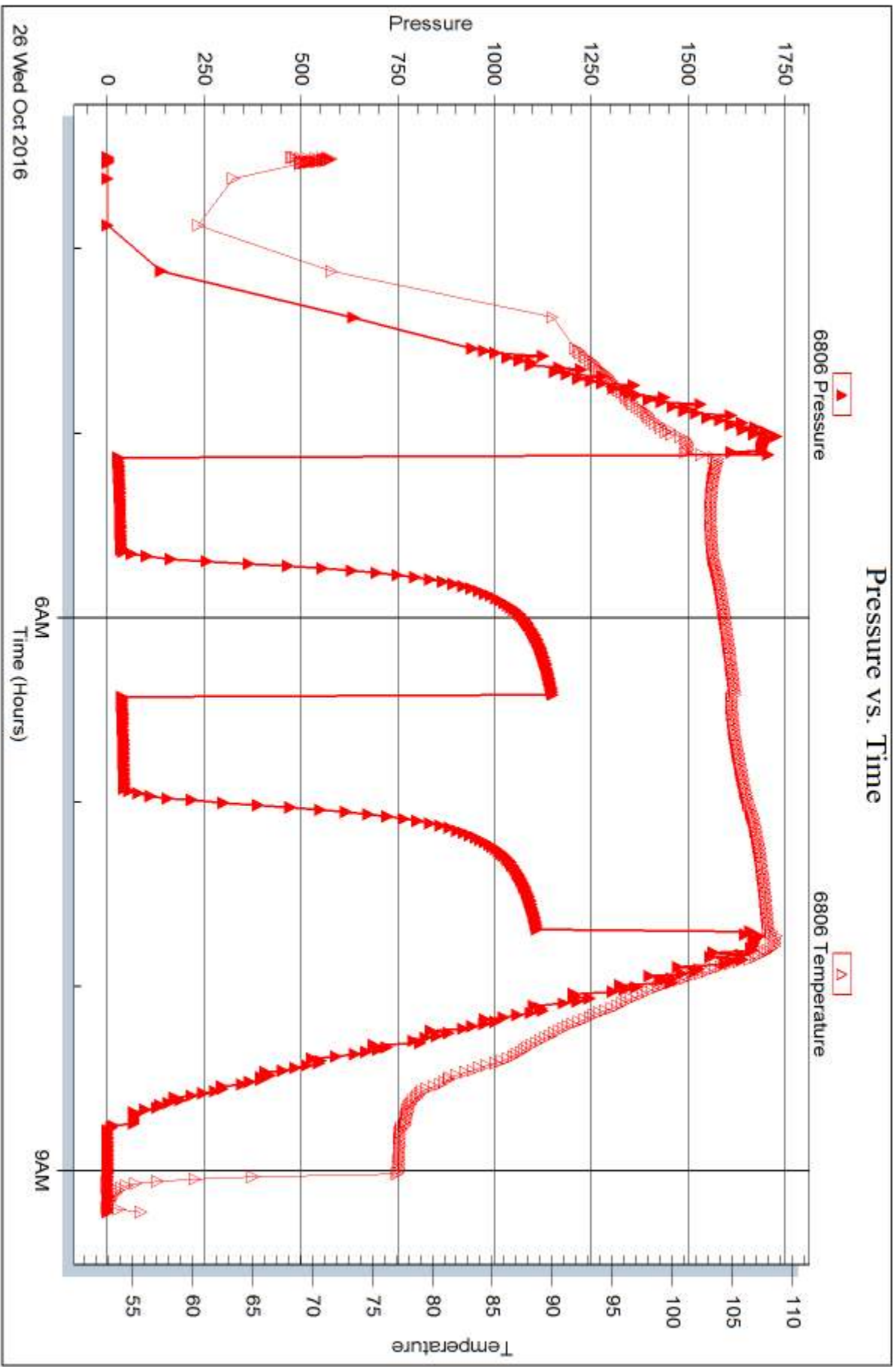
26 Wed Oct 2016

Serial #: 6806

Outside Jasper Co

Greg Unit #1

DST Test Number: 3



Trilobite Testing, Inc

Ref. No: 57962

Printed: 2016.10.28 @ 09:59:54



DRILL STEM TEST REPORT

Prepared For: **Jaspar Co**

PO Box 1120
Hays, KS 67601

ATTN: Jeff Lawler

Greg Unit #1

21-6S-20W Rooks,KS

Start Date: 2016.10.26 @ 17:11:15

End Date: 2016.10.26 @ 23:06:30

Job Ticket #: 57963 DST #: 4

Trilobite Testing, Inc
PO Box 362 Hays, KS 67601
ph: 785-625-4778 fax: 785-625-5620

Printed: 2016.10.28 @ 09:59:24

Jaspar Co
21-6S-20W Rooks,KS
Greg Unit #1
DST # 4
LKC J - K
2016.10.26



TRILOBITE TESTING, INC

DRILL STEM TEST REPORT

Jaspar Co
 PO Box 1120
 Hays, KS 67601
 ATTN: Jeff Lawler

21-6S-20W Rooks, KS
Greg Unit #1
 Job Ticket: 57963 **DST#: 4**
 Test Start: 2016.10.26 @ 17:11:15

GENERAL INFORMATION:

Formation: **LKC J - K**
 Deviated: No Whipstock: ft (KB)
 Time Tool Opened: 19:08:00
 Time Test Ended: 23:06:30
 Interval: **3590.00 ft (KB) To 3628.00 ft (KB) (TVD)**
 Total Depth: 3628.00 ft (KB) (TVD)
 Hole Diameter: 7.88 inches Hole Condition: Good
 Test Type: Conventional Bottom Hole (Reset)
 Tester: Leal Cason
 Unit No: 74
 Reference Elevations: 2193.00 ft (KB)
 2185.00 ft (CF)
 KB to GR/CF: 8.00 ft

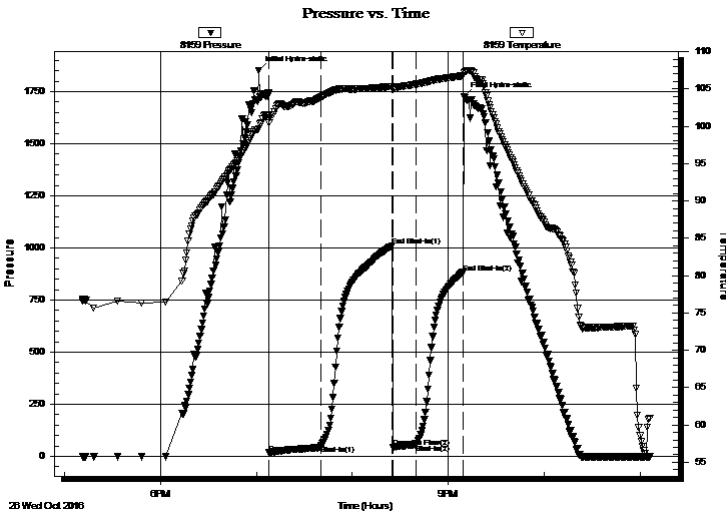
Serial #: 8159

Inside

Press@RunDepth: 57.04 psig @ 3591.00 ft (KB) Capacity: 8000.00 psig
 Start Date: 2016.10.26 End Date: 2016.10.26 Last Calib.: 2016.10.26
 Start Time: 17:11:16 End Time: 23:06:30 Time On Btm: 2016.10.26 @ 19:01:30
 Time Off Btm: 2016.10.26 @ 21:09:45

TEST COMMENT: IF: Weak Blow, 1/2", Died Off to 1/16"
 IS: No Blow Back
 FF: Weak 1" Blow
 FS: No Blow Back

PRESSURE SUMMARY



Time (Min.)	Pressure (psig)	Temp (deg F)	Annotation
0	1851.90	99.65	Initial Hydro-static
7	16.73	100.50	Open To Flow (1)
39	51.85	103.90	Shut-In(1)
84	1009.65	105.34	End Shut-In(1)
84	45.44	105.08	Open To Flow (2)
99	57.04	105.63	Shut-In(2)
128	882.42	106.75	End Shut-In(2)
129	1725.71	107.12	Final Hydro-static

Recovery

Length (ft)	Description	Volume (bbl)
65.00	MCO 50%M 50%O	0.32

* Recovery from multiple tests

Gas Rates

Choke (inches)	Pressure (psig)	Gas Rate (Mcf/d)



**TRILOBITE
TESTING, INC**

DRILL STEM TEST REPORT

TOOL DIAGRAM

Jaspar Co
PO Box 1120
Hays, KS 67601
ATTN: Jeff Lawler

21-6S-20W Rooks,KS
Greg Unit #1
Job Ticket: 57963 **DST#: 4**
Test Start: 2016.10.26 @ 17:11:15

Tool Information

Drill Pipe:	Length: 3476.00 ft	Diameter: 3.80 inches	Volume: 48.76 bbl	Tool Weight:	2100.00 lb
Heavy Wt. Pipe:	Length: 0.00 ft	Diameter: 0.00 inches	Volume: 0.00 bbl	Weight set on Packer:	25000.00 lb
Drill Collar:	Length: 120.00 ft	Diameter: 2.25 inches	Volume: 0.59 bbl	Weight to Pull Loose:	70000.00 lb
			<u>Total Volume: 49.35 bbl</u>	Tool Chased	ft
Drill Pipe Above KB:	25.00 ft			String Weight: Initial	52000.00 lb
Depth to Top Packer:	3590.00 ft			Final	52000.00 lb
Depth to Bottom Packer:	ft				
Interval between Packers:	38.00 ft				
Tool Length:	57.00 ft				
Number of Packers:	2	Diameter: 6.75 inches			

Tool Comments:

Tool Description

Tool Description	Length (ft)	Serial No.	Position	Depth (ft)	Accum. Lengths
Shut In Tool	5.00			3576.00	
Hydraulic tool	5.00			3581.00	
Packer	5.00			3586.00	19.00 Bottom Of Top Packer
Packer	4.00			3590.00	
Stubb	1.00			3591.00	
Recorder	0.00	8159	Inside	3591.00	
Recorder	0.00	6806	Outside	3591.00	
Perforations	34.00			3625.00	
Bullnose	3.00			3628.00	38.00 Bottom Packers & Anchor
Total Tool Length:	57.00				



**TRILOBITE
TESTING, INC**

DRILL STEM TEST REPORT

FLUID SUMMARY

Jaspar Co
PO Box 1120
Hays, KS 67601
ATTN: Jeff Lawler

21-6S-20W Rooks,KS
Greg Unit #1
Job Ticket: 57963 **DST#: 4**
Test Start: 2016.10.26 @ 17:11:15

Mud and Cushion Information

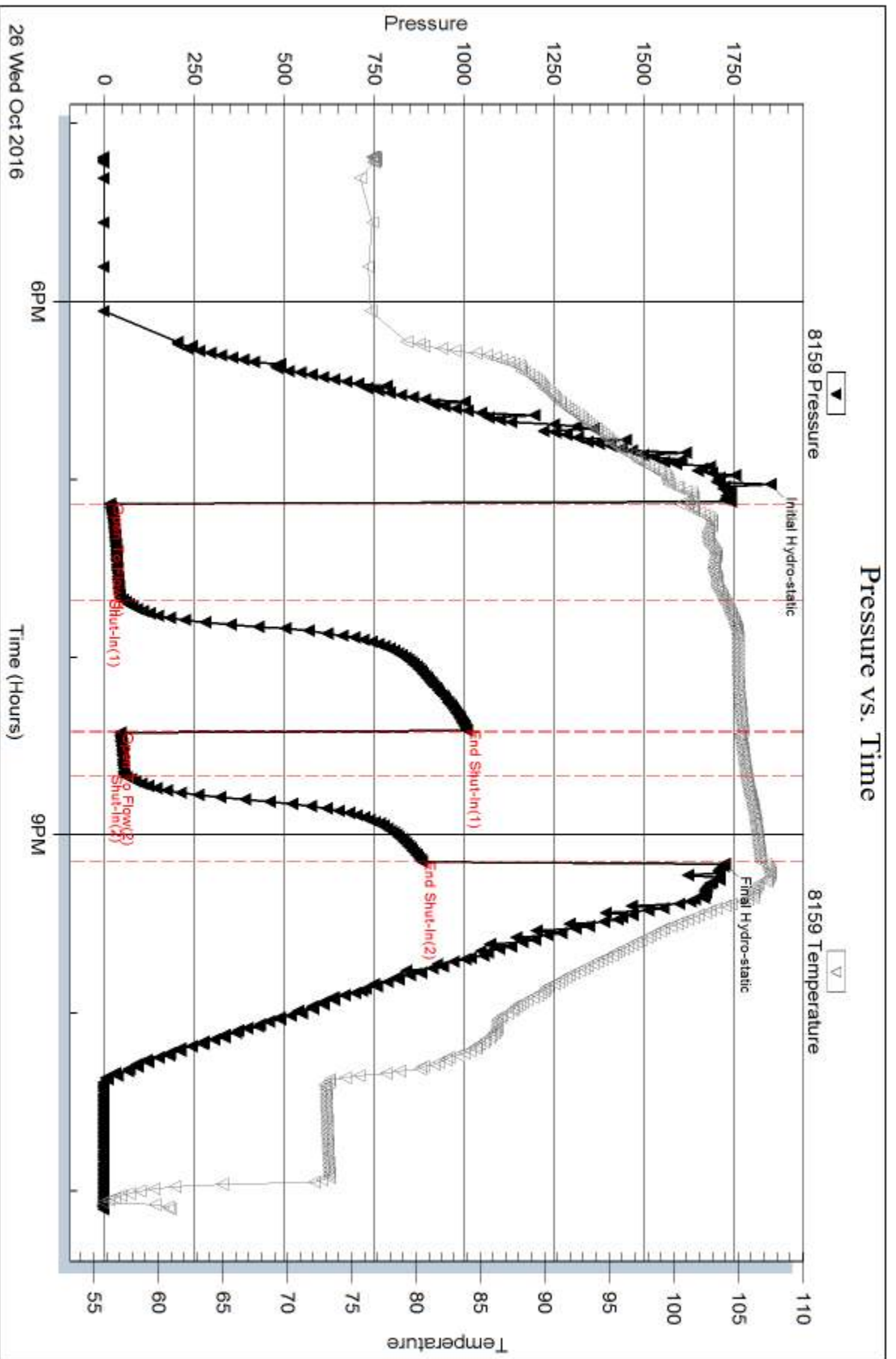
Mud Type: Gel Chem	Cushion Type:	Oil API:	deg API
Mud Weight: 9.00 lb/gal	Cushion Length: ft	Water Salinity:	ppm
Viscosity: 55.00 sec/qt	Cushion Volume: bbl		
Water Loss: 7.18 in ³	Gas Cushion Type:		
Resistivity: ohm.m	Gas Cushion Pressure: psig		
Salinity: 750.00 ppm			
Filter Cake: 0.02 inches			

Recovery Information

Recovery Table

Length ft	Description	Volume bbl
65.00	MCO 50%M 50%O	0.320

Total Length: 65.00 ft Total Volume: 0.320 bbl
 Num Fluid Samples: 0 Num Gas Bombs: 0 Serial #:
 Laboratory Name: Laboratory Location:
 Recovery Comments:

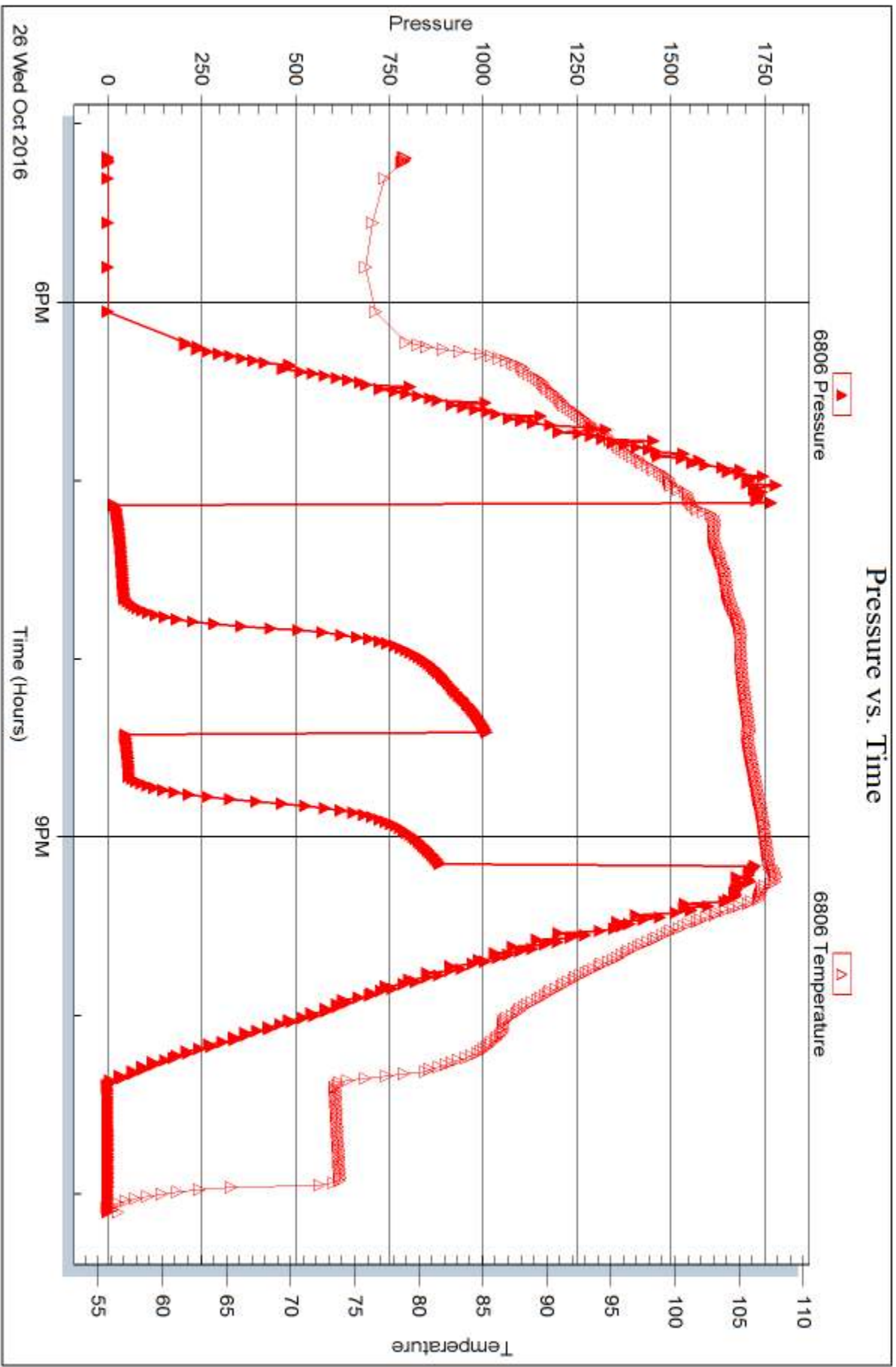


Serial #: 6806

Outside Jasper Co

Greg Unit #1

DST Test Number: 4



Trilobite Testing, Inc

Ref. No: 57963

Printed: 2016.10.28 @ 09:59:26



DRILL STEM TEST REPORT

Prepared For: **Jaspar Co**

PO Box 1120
Hays, KS 67601

ATTN: Jeff Lawler

Greg Unit #1

21-6S-20W Rooks,KS

Start Date: 2016.10.27 @ 07:34:15

End Date: 2016.10.27 @ 13:55:15

Job Ticket #: 57964 DST #: 5

Trilobite Testing, Inc
PO Box 362 Hays, KS 67601
ph: 785-625-4778 fax: 785-625-5620

Printed: 2016.10.28 @ 09:56:22

Jaspar Co
21-6S-20W Rooks,KS
Greg Unit #1
DST # 5
Conglomerate Sand
2016.10.27



TRILOBITE TESTING, INC

DRILL STEM TEST REPORT

Jaspar Co
 PO Box 1120
 Hays, KS 67601
 ATTN: Jeff Lawler

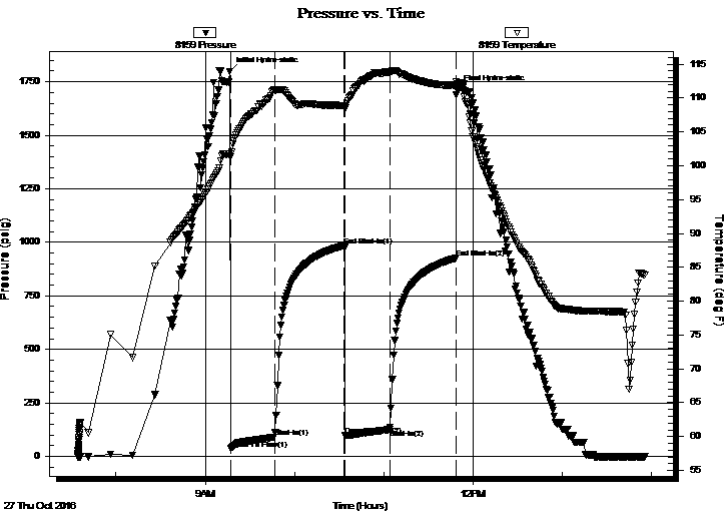
21-6S-20W Rooks,KS
Greg Unit #1
 Job Ticket: 57964 **DST#: 5**
 Test Start: 2016.10.27 @ 07:34:15

GENERAL INFORMATION:

Formation: **Conglomerate Sand**
 Deviated: No Whipstock: ft (KB)
 Time Tool Opened: 09:17:00
 Time Test Ended: 13:55:15
 Interval: **3635.00 ft (KB) To 3673.00 ft (KB) (TVD)**
 Total Depth: 3673.00 ft (KB) (TVD)
 Hole Diameter: 7.88 inches Hole Condition: Good
 Test Type: Conventional Bottom Hole (Reset)
 Tester: Leal Cason
 Unit No: 74
 Reference Elevations: 2193.00 ft (KB)
 2185.00 ft (CF)
 KB to GR/CF: 8.00 ft

Serial #: 8159 Inside
 Press@RunDepth: 125.29 psig @ 3636.00 ft (KB) Capacity: 8000.00 psig
 Start Date: 2016.10.27 End Date: 2016.10.27 Last Calib.: 2016.10.27
 Start Time: 07:34:16 End Time: 13:55:15 Time On Btm: 2016.10.27 @ 09:16:15
 Time Off Btm: 2016.10.27 @ 11:49:15

TEST COMMENT: IF: Fair Blow , BOB in 28 minutes
 IS: 1/2" Blow Back
 FF: Fair Blow , Built to 7 1/2"
 FS: 3/4" Blow Back



PRESSURE SUMMARY

Time (Min.)	Pressure (psig)	Temp (deg F)	Annotation
0	1798.53	101.73	Initial Hydro-static
1	34.89	101.30	Open To Flow (1)
31	91.00	111.25	Shut-In(1)
77	984.76	108.90	End Shut-In(1)
78	96.92	108.53	Open To Flow (2)
108	125.29	113.77	Shut-In(2)
152	926.34	111.89	End Shut-In(2)
153	1712.41	111.93	Final Hydro-static

Recovery

Length (ft)	Description	Volume (bbl)
0.00	90 GIP	0.00
190.00	GMCO 10%G 25%M 65%O	1.57
92.00	MCO 25%M 75%O	1.29

* Recovery from multiple tests

Gas Rates

Choke (inches)	Pressure (psig)	Gas Rate (Mcf/d)



**TRILOBITE
TESTING, INC**

DRILL STEM TEST REPORT

TOOL DIAGRAM

Jaspar Co
PO Box 1120
Hays, KS 67601
ATTN: Jeff Lawler

21-6S-20W Rooks,KS
Greg Unit #1
Job Ticket: 57964 **DST#: 5**
Test Start: 2016.10.27 @ 07:34:15

Tool Information

Drill Pipe:	Length: 3508.00 ft	Diameter: 3.80 inches	Volume: 49.21 bbl	Tool Weight: 2100.00 lb
Heavy Wt. Pipe:	Length: 0.00 ft	Diameter: 0.00 inches	Volume: 0.00 bbl	Weight set on Packer: 25000.00 lb
Drill Collar:	Length: 120.00 ft	Diameter: 2.25 inches	Volume: 0.59 bbl	Weight to Pull Loose: 70000.00 lb
			<u>Total Volume: 49.80 bbl</u>	Tool Chased ft
Drill Pipe Above KB:	12.00 ft			String Weight: Initial 58000.00 lb
Depth to Top Packer:	3635.00 ft			Final 58000.00 lb
Depth to Bottom Packer:	ft			
Interval between Packers:	38.00 ft			
Tool Length:	57.00 ft			
Number of Packers:	2	Diameter: 6.75 inches		

Tool Comments:

Tool Description

Tool Description	Length (ft)	Serial No.	Position	Depth (ft)	Accum. Lengths
Shut In Tool	5.00			3621.00	
Hydraulic tool	5.00			3626.00	
Packer	5.00			3631.00	19.00 Bottom Of Top Packer
Packer	4.00			3635.00	
Stubb	1.00			3636.00	
Recorder	0.00	8159	Inside	3636.00	
Recorder	0.00	6806	Outside	3636.00	
Perforations	34.00			3670.00	
Bullnose	3.00			3673.00	38.00 Bottom Packers & Anchor
Total Tool Length:	57.00				



**TRILOBITE
TESTING, INC**

DRILL STEM TEST REPORT

FLUID SUMMARY

Jaspar Co
PO Box 1120
Hays, KS 67601
ATTN: Jeff Lawler

21-6S-20W Rooks,KS
Greg Unit #1
Job Ticket: 57964 **DST#: 5**
Test Start: 2016.10.27 @ 07:34:15

Mud and Cushion Information

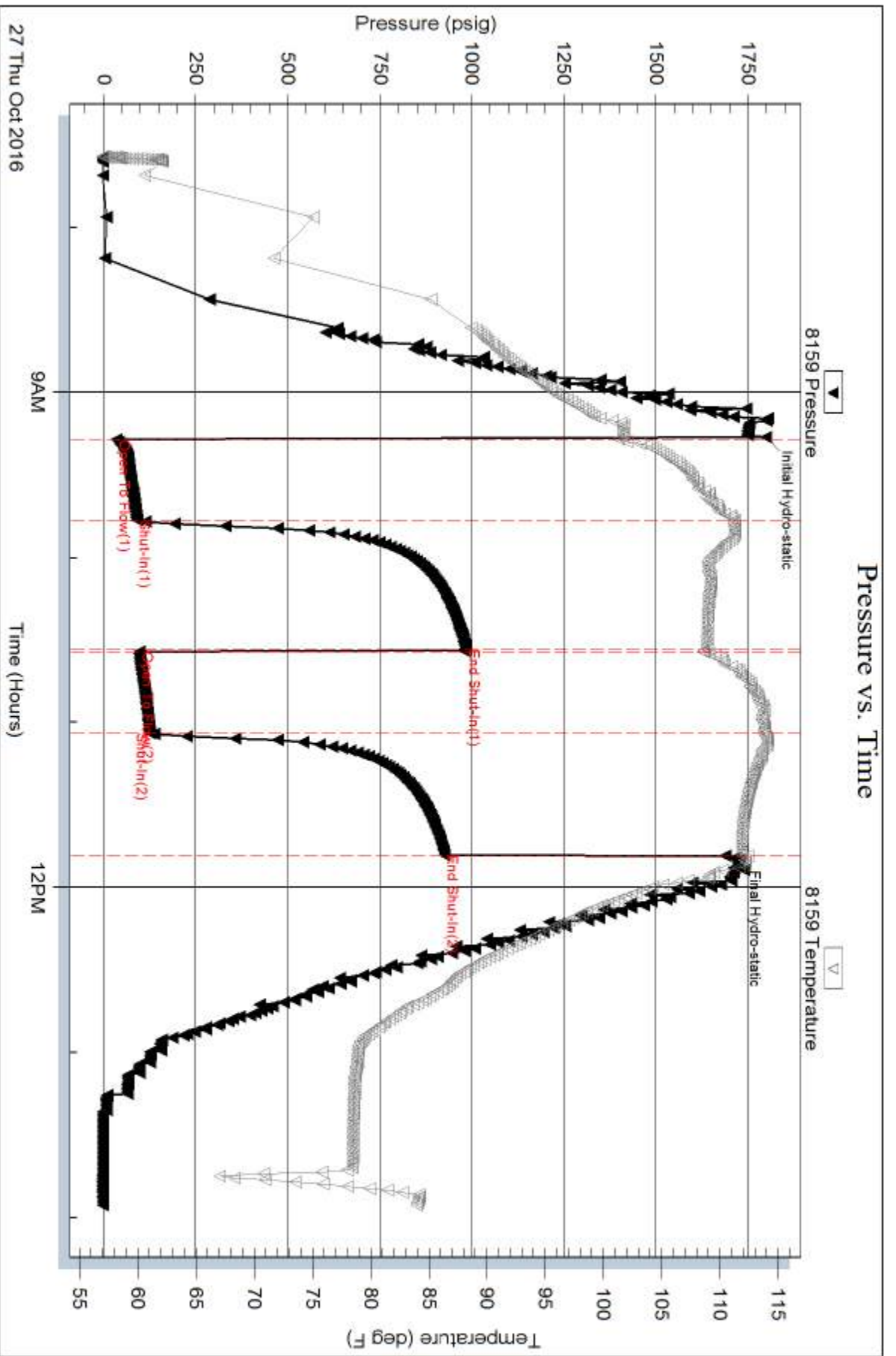
Mud Type: Gel Chem	Cushion Type:	Oil API:	deg API
Mud Weight: 9.00 lb/gal	Cushion Length: ft	Water Salinity:	ppm
Viscosity: 55.00 sec/qt	Cushion Volume: bbl		
Water Loss: 7.17 in ³	Gas Cushion Type:		
Resistivity: ohm.m	Gas Cushion Pressure: psig		
Salinity: 750.00 ppm			
Filter Cake: 0.02 inches			

Recovery Information

Recovery Table

Length ft	Description	Volume bbl
0.00	90 GIP	0.000
190.00	GMCO 10%G 25%M 65%O	1.572
92.00	MCO 25%M 75%O	1.291

Total Length: 282.00 ft Total Volume: 2.863 bbl
Num Fluid Samples: 0 Num Gas Bombs: 0 Serial #:
Laboratory Name: Laboratory Location:
Recovery Comments:

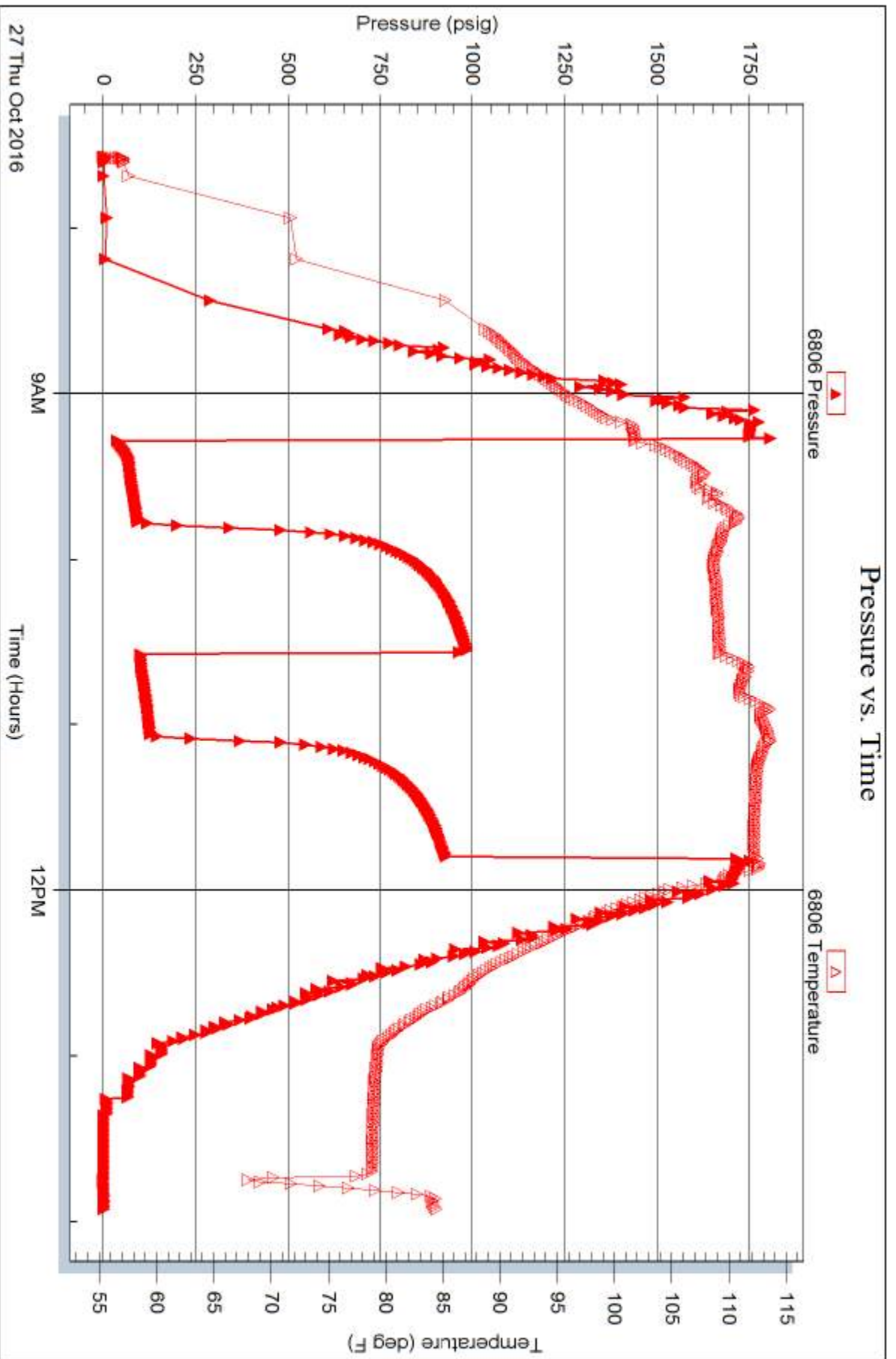


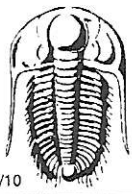
Serial #: 6806

Outside Jasper Co

Greg Unit #1

DST Test Number: 5





TRILOBITE TESTING INC.

1515 Commerce Parkway • Hays, Kansas 67601

Test Ticket

NO. 57960

Well Name & No. ~~Greg~~ ^{Greg} Unit 1 Test No. 1 Date 10/25/16
 Company Jasper Co Elevation 2193 KB 2185 GL
 Address PO Box 1120 Hays, KS 67601
 Co. Rep / Geo. Jeff Lawler Rig WW 14
 Location: Sec. 21 Twp. ~~6S~~ 6S Rge. 20W Co. ROOKS State KS

Interval Tested 3497 - 3520 Zone Tested LKC "E-F"
 Anchor Length 23 Drill Pipe Run 3389 Mud Wt. 9.0
 Top Packer Depth 3492 Drill Collars Run 120 Vis 55
 Bottom Packer Depth 3497 Wt. Pipe Run 0 WL 7.2
 Total Depth 3520 Chlorides 750 ppm System LCM 1 1/2
 Blow Description IF: weak surface blow, Flushed TOO!, weak surface blow
 ISI: NO Blow Back
 Pulled Test

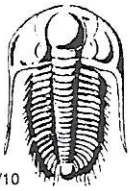
Rec	Feet of	%gas	%oil	%water	%mud
127	Mud				

Rec Total 127 BHT 109 Gravity N/C API RW N/C @ N/C °F Chlorides N/C ppm

(A) Initial Hydrostatic 1349	<input checked="" type="checkbox"/> Test 850	T-On Location 01:00
(B) First Initial Flow 90	<input checked="" type="checkbox"/> Jars NO JARS	T-Started 02:55
(C) First Final Flow 231 301	<input type="checkbox"/> Safety Joint	T-Open 05:39
(D) Initial Shut-In 793	<input type="checkbox"/> Circ Sub	T-Pulled 06:42
(E) Second Initial Flow N/A	<input type="checkbox"/> Hourly Standby	T-Out 08:19
(F) Second Final Flow N/A	<input checked="" type="checkbox"/> Mileage 1209 90	Comments Tool slid 15'
(G) Final Shut-In N/A	<input type="checkbox"/> Sampler	
(H) Final Hydrostatic 1685 1685	<input type="checkbox"/> Straddle	<input type="checkbox"/> Ruined Shale Packer
Initial Open 30	<input type="checkbox"/> Shale Packer	<input type="checkbox"/> Ruined Packer
Initial Shut-In 30	<input type="checkbox"/> Extra Packer	<input type="checkbox"/> Extra Copies
Final Flow N/A	<input type="checkbox"/> Extra Recorder	Sub Total 0
Final Shut-In N/A	<input type="checkbox"/> Day Standby	Total 940
	<input type="checkbox"/> Accessibility	MP/DST Disc't
	Sub Total 940	

Approved By Our Representative

Trilobite Testing Inc. shall not be liable for damaged of any kind of the property or personnel of the one for whom a test is made, or for any loss suffered or sustained, directly or indirectly, through the use of its equipment, or its statements or opinion concerning the results of any test, tools lost or damaged in the hole shall be paid for at cost by the party for whom the test is made.



TRILOBITE TESTING INC.

1515 Commerce Parkway • Hays, Kansas 67601

Test Ticket

NO. 57961

Well Name & No. Greg Unit 1 Test No. 2 Date 10/25/16
 Company Jasper CO Elevation 2193 KB 2185 GL
 Address PO Box 1120 Hays, KS 67601
 Co. Rep / Geo. Jeff Lawler Rig WW14
 Location: Sec. 21 Twp. 6S Rge. 20W Co. Rooks State KS

Interval Tested 3497 - 3520 Zone Tested LKC E-F
 Anchor Length 23 Drill Pipe Run 3387 Mud Wt. 9.0
 Top Packer Depth 3492 Drill Collars Run 120 Vis 55
 Bottom Packer Depth 3497 Wt. Pipe Run 0 WL 7.2
 Total Depth 3520 Chlorides 750 ppm System LCM 1 1/2
 Blow Description IF: weak surface Blow, Dead @ 4 minutes, Flushed tool, weak surface Blow
Dead @ 5 minutes
ISI: NO Blow

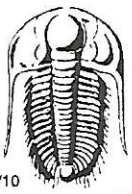
Rec	Feet of	%gas	%oil	%water	%mud
<u>2</u>	<u>mud</u>				

Rec Total 2 BHT 100 Gravity NIC API RW NIC @ NIC °F Chlorides NIC ppm

(A) Initial Hydrostatic <u>1729</u>	<input checked="" type="checkbox"/> Test <u>1050</u>	T-On Location <u>12:45</u>
(B) First Initial Flow <u>14</u>	<input type="checkbox"/> Jars	T-Started <u>12:55</u>
(C) First Final Flow <u>18</u>	<input type="checkbox"/> Safety Joint	T-Open <u>14:39</u>
(D) Initial Shut-In <u>200</u>	<input type="checkbox"/> Circ Sub	T-Pulled <u>15:41</u>
(E) Second Initial Flow <u>N/A</u>	<input type="checkbox"/> Hourly Standby	T-Out <u>17:35</u>
(F) Second Final Flow <u>N/A</u>	<input checked="" type="checkbox"/> Mileage <u>(120)</u> 90	Comments <u>Tool Slid 10'</u>
(G) Final Shut-In <u>N/A</u>	<input type="checkbox"/> Sampler	
(H) Final Hydrostatic <u>1739</u>	<input type="checkbox"/> Straddle	<input type="checkbox"/> Ruined Shale Packer
	<input type="checkbox"/> Shale Packer	<input type="checkbox"/> Ruined Packer
Initial Open <u>30</u>	<input type="checkbox"/> Extra Packer	<input type="checkbox"/> Extra Copies
Initial Shut-In <u>30</u>	<input type="checkbox"/> Extra Recorder	Sub Total <u>0</u>
Final Flow <u>N/A</u>	<input type="checkbox"/> Day Standby	Total <u>1140</u>
Final Shut-In <u>N/A</u>	<input type="checkbox"/> Accessibility	MP/DST Disc't
	Sub Total <u>1140</u>	

Approved By [Signature] Our Representative [Signature]

Trilobite Testing Inc. shall not be liable for damages of any kind of the property or personnel of the one for whom a test is made, or for any loss suffered or sustained, directly or indirectly, through the use of its equipment, or its statements or opinion concerning the results of any test, tools lost or damaged in the hole shall be paid for at cost by the party for whom the test is made.



TRILOBITE TESTING INC.

1515 Commerce Parkway • Hays, Kansas 67601

Test Ticket

NO. 57962

Well Name & No. Greg unit 1 Test No. 3 Date 10/26/16
 Company Jaspar Co Elevation 2193 KB 2185 GL
 Address PO Box 1120 Hays, KS 67601
 Co. Rep / Geo. Jeff Lawler Rig WW 14
 Location: Sec. 21 Twp. 6S Rge. 20W Co. ROOKS State KS

Interval Tested 3545 - 3590 Zone Tested LKC "H+I"
 Anchor Length 45 Drill Pipe Run 3414 Mud Wt. 9.3
 Top Packer Depth 3540 Drill Collars Run 120 Vis 53
 Bottom Packer Depth 3545 Wt. Pipe Run 0 WL 7.6
 Total Depth 3590 Chlorides 750 ppm System LCM 2

Blow Description IF: weak 1 inch Blow
FSI: NO Blow Back
FF: NO Blow
FSD: NO Blow Back

Rec	Feet of	%gas	%oil	%water	%mud
<u>55</u>	<u>Mud</u>				

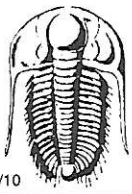
Rec Total 55 BHT 108 Gravity NIC API RW NIC @ NIC °F Chlorides NIC ppm

(A) Initial Hydrostatic 1705 Test 1150 T-On Location 02:30
 (B) First Initial Flow 25 Jars _____ T-Started 03:30
 (C) First Final Flow 35 Safety Joint _____ T-Open 05:07
 (D) Initial Shut-In 1148 Circ Sub _____ T-Pulled 07:42
 (E) Second Initial Flow 34 Hourly Standby _____ T-Out 09:11
 (F) Second Final Flow 41 Mileage (120) 90 Comments _____
 (G) Final Shut-In 1109 Sampler _____
 (H) Final Hydrostatic 1720 Straddle _____ Ruined Shale Packer _____

Initial Open 30 Shale Packer _____ Ruined Packer _____
 Initial Shut-In 45 Extra Packer _____ Extra Copies _____
 Final Flow 30 Extra Recorder _____ Sub Total 0
 Final Shut-In 45 Day Standby _____ Total 1140
 Accessibility _____ MP/DST Disc't _____
 Sub Total 1140

Approved By [Signature] Our Representative [Signature]

Trilobite Testing Inc. shall not be liable for damaged of any kind of the property or personnel of the one for whom a test is made, or for any loss suffered or sustained, directly or indirectly, through the use of its equipment, or its statements or opinion concerning the results of any test, tools lost or damaged in the hole shall be paid for at cost by the party for whom the test is made.



TRILOBITE TESTING INC.

1515 Commerce Parkway • Hays, Kansas 67601

Test Ticket

NO. 57963

Well Name & No. Greg Unit 1 Test No. 4 Date 10/26/16
 Company Jasper CO Elevation 2193 KB 2185 GL
 Address PO Box 1120 Hays, KS 67601
 Co. Rep / Geo. Jeff Lawler Rig WV 14
 Location: Sec. 21 Twp. 65 Rge. 20w Co. ROOKS State KS

Interval Tested 3590 - 3628 Zone Tested LKC " J+K
 Anchor Length 38 Drill Pipe Run 3476 Mud Wt. 9.1
 Top Packer Depth 3585 Drill Collars Run 120 Vis 46
 Bottom Packer Depth 3590 Wt. Pipe Run 0 WL 8.8
 Total Depth 3628 Chlorides 750 ppm System LCM 2

Blow Description IF: weak Blow, 1/2 inch, Died off to 1/16 inch
IST: NO Blow BACK
FF: weak 1 inch Blow
FSI: NO Blow BACK

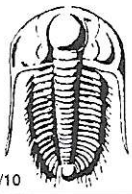
Rec	Feet of	%gas	%oil	%water	%mud
<u>65</u>	<u>MCO</u>		<u>50</u>	<u>50</u>	
Rec	Feet of	%gas	%oil	%water	%mud
Rec	Feet of	%gas	%oil	%water	%mud
Rec	Feet of	%gas	%oil	%water	%mud
Rec	Feet of	%gas	%oil	%water	%mud

Rec Total 65 BHT 107 Gravity NIC API RW NIC @ NIC °F Chlorides NIC ppm

(A) Initial Hydrostatic <u>1852</u>	<input checked="" type="checkbox"/> Test <u>1050</u>	T-On Location <u>16:30</u>
(B) First Initial Flow <u>17</u>	<input type="checkbox"/> Jars	T-Started <u>17:11</u>
(C) First Final Flow <u>52</u>	<input type="checkbox"/> Safety Joint	T-Open <u>19:08</u>
(D) Initial Shut-In <u>1010</u>	<input type="checkbox"/> Circ Sub	T-Pulled <u>21:09</u>
(E) Second Initial Flow <u>45</u>	<input type="checkbox"/> Hourly Standby	T-Out <u>23:06</u>
(F) Second Final Flow <u>57</u>	<input checked="" type="checkbox"/> Mileage <u>120</u> 90	Comments
(G) Final Shut-In <u>882</u>	<input type="checkbox"/> Sampler	
(H) Final Hydrostatic <u>1726</u>	<input type="checkbox"/> Straddle	<input type="checkbox"/> Ruined Shale Packer
Initial Open <u>30</u>	<input type="checkbox"/> Shale Packer	<input type="checkbox"/> Ruined Packer
Initial Shut-In <u>45</u>	<input type="checkbox"/> Extra Packer	<input type="checkbox"/> Extra Copies
Final Flow <u>15</u>	<input type="checkbox"/> Extra Recorder	Sub Total <u>0</u>
Final Shut-In <u>30</u>	<input type="checkbox"/> Day Standby	Total <u>1140</u>
	<input type="checkbox"/> Accessibility	MP/DST Disc't
	Sub Total <u>1140</u>	

Approved By [Signature] Our Representative [Signature]

Trilobite Testing Inc. shall not be liable for damaged of any kind of the property or personnel of the one for whom a test is made, or for any loss suffered or sustained, directly or indirectly, through the use of its equipment, or its statements or opinion concerning the results of any test, tools lost or damaged in the hole shall be paid for at cost by the party for whom the test is made.



TRILOBITE TESTING INC.

1515 Commerce Parkway • Hays, Kansas 67601

Test Ticket

NO. 57964

Well Name & No. Greg Unit 1 Test No. 5 Date 10/27/16
 Company Jasper Co Elevation 2193 KB 2185 GL
 Address PO Box 1120 Hays, KS 67601
 Co. Rep / Geo. Jeff Lawler Rig WW14
 Location: Sec. 21 Twp. 6S Rge. 20W Co. Rooks State KS

Interval Tested 3635 - 3673 Zone Tested Conglomerate Sand
 Anchor Length 38 Drill Pipe Run 3508 Mud Wt. 9.1
 Top Packer Depth 3630 Drill Collars Run 120 Vis 58
 Bottom Packer Depth 3635 Wt. Pipe Run 0 WL 8.8
 Total Depth 3673 Chlorides 750 ppm System LCM 2

Blow Description IF: ~~FF~~ Fair Blow, BOB in 28 minutes
ISI: 1/2 inch Blow Back
FF: Fair Blow, Built to 7 1/2 inches
FST: 3/4 inch Blow Back

Rec	Feet of	%gas	%oil	%water	%mud
<u>90</u>	<u>GIP</u>				
<u>92</u>	<u>MCO</u>		<u>75</u>		<u>25</u>
<u>190</u>	<u>GMCO</u>	<u>10</u>	<u>65</u>		<u>25</u>

Rec Total 282 BHT 112 Gravity NIC API RW NIC @ NIC °F Chlorides NIC ppm

(A) Initial Hydrostatic 1799 Test 1050 T-On Location 07:30
 (B) First Initial Flow 35 Jars _____ T-Started 07:34
 (C) First Final Flow 91 Safety Joint _____ T-Open 09:17
 (D) Initial Shut-In 985 Circ Sub _____ T-Pulled 11:48
 (E) Second Initial Flow 97 Hourly Standby _____ T-Out 13:55
 (F) Second Final Flow 125 Mileage 120 90 Comments _____
 (G) Final Shut-In 926 Sampler _____
 (H) Final Hydrostatic 1712 Straddle _____ Ruined Shale Packer _____
 Shale Packer _____ Ruined Packer _____
 Extra Packer _____ Extra Copies _____
 Initial Open 30 Extra Recorder _____ Sub Total 0
 Initial Shut-In 45 Day Standby _____ Total 1140
 Final Flow 30 Accessibility _____ MP/DST Disc't _____
 Final Shut-In 45 _____ Sub Total 1140

Approved By Jeff Paul Our Representative [Signature]

Trilobite Testing Inc. shall not be liable for damaged of any kind of the property or personnel of the one for whom a test is made, or for any loss suffered or sustained, directly or indirectly, through the use of its equipment, or its statements of opinion concerning the results of any test, tools lost or damaged in the hole shall be paid for at cost by the party for whom the test is made.