

Saman Sharifaie

Petroleum Geologist

GEOLOGIST'S REPORT

DRILLING TIME AND SAMPLE LOG

COMPANY: **Martin Drilling Co., Inc.**
LEASE: **McClung #1-2**

FIELD: **Wildcat**
LOCATION: **1650' FSL & 330' FEE**
SEC: **12** TWP: **2S** RGE: **37W**
COUNTY: **Cheyenne** STATE: **Kansas**

CONTRACTOR: **Martin Drilling #3**
RUD: **11/09/16**
RTD: **4900'** TYPE MUD: **Chemical**

WUD UP: **3408'** TYPE MUD: **Chemical**
SAMPLER: **3990'** TO RTD
DRILLING TIME KEPT FROM: **3990'** TO RTD
SAMPLER EXAMINED FROM: **3990'** TO RTD

GEOLOGICAL SUPERVISION FROM: **3690'**
REFERENCE WELL: **MDCI - Panclini #2-7**

FORMATION: **Flower Hill**

Sample Tops: **3278 (+101)**
E-log Tops: **3278 (+101)**

Formation: **3315 (+69)**
Base Anhydrite: **4083 (-704)**
Tussock: **4222 (-843)**
Orebed: **4304 (-925)**
Siltstone: **4352 (-1155)**
Sandstone: **4382 (-1499)**
Mound City: **4580 (-1203)**
FT Scott: **4708 (-1329)**
Celia: **4787 (-1408)**

Sample: **3278 (+101)**
E-log: **3278 (+101)**

Sample: **3315 (+69)**
E-log: **3315 (+69)**

Sample: **4083 (-704)**
E-log: **4083 (-704)**

Sample: **4222 (-843)**
E-log: **4222 (-843)**

Sample: **4304 (-925)**
E-log: **4304 (-925)**

Sample: **4352 (-1155)**
E-log: **4352 (-1155)**

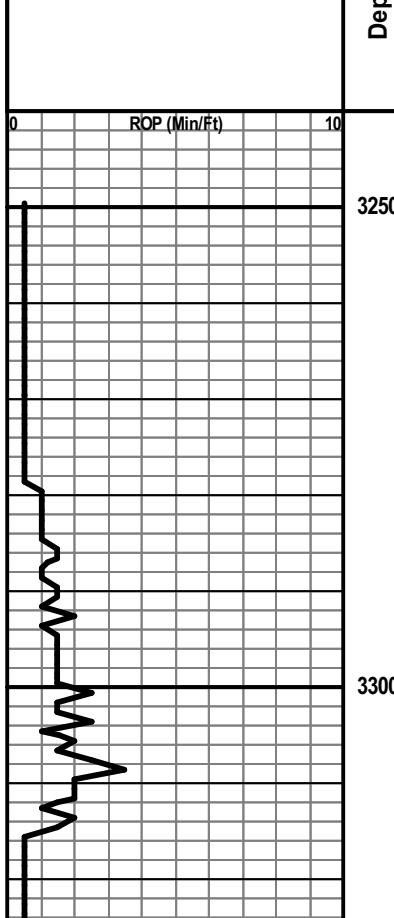
Sample: **4382 (-1499)**
E-log: **4382 (-1499)**

REMARKS: Due to fair shows of oil and positive DST results of the Oread and LKC "D" zones, it is recommended and agreed upon by all parties that production casing be set to further evaluate this well.

Respectfully Submitted,
Saman Sharifaie
Petroleum Geologist

API #15-023-21455

*Tops have been adjusted to electric logs



Depth (ft)	Lithology	Geological Descriptions	Engineering Data
3278 (+101)	Anhydrite	Anhydrite 3278 (+101)	
3310 (+69)	Anhydrite	Base Anhydrite 3310 (+69)	
3990		DAILY PENETRATION @ 7:00 AM 10/28/16 - Spudded at 2:45 PM 10/29/16 - Drilling at 570' 10/30/16 - Drilling at 2240' 10/31/16 - Broken down at 3564' 11/01/16 - Drilling at 4140' 11/02/16 - Drilling at 4314' 11/03/16 - Testing at 4440' 11/04/16 - Testing at 4492' 11/05/16 - Testing at 4530' 11/06/16 - Testing at 4580' 11/07/16 - Testing at 4690' 11/08/16 - CFS at 4790'	
4083 (-704)	Sandstone	Topeka 4087 (-708)	
4222 (-843)	Sandstone	Deer Creek 4098 (-719)	DST #1 (LKC A-D) 4166'-4245' 30-60-60-90 IF: BOB (11") @ 20 mins ISI: Return built to 8 1/2" FF: BOB @ 21 1/2 mins FSL: Return built to 8 1/2" Rec: 300' GIP, 55' CO (90%O, 8%G, 2%M), 20" MCO (81%O, 15%M, 4%G), 167" GOM (60%O, 21%M, 19%G), 175" GOM (39%M, 37%O, 24%G) Morgan Mud @ 4191' Wt: 8.8 Vis: 58 WI: 5.6 Chl: 700 LCM: #4
4304 (-925)	Sandstone	LeCompton 4165 (-786)	DST #2 (LKC A-D) 4246'-4384' 15-60-30-90 IF: BOB @ 4 1/2 mins FF: BOB @ 6 mins Rec: 615' MCO w/Trc O (75%W, 25%M), 125' GSWCM w/O spts (86%M, 7%W, 5%G, 2%O), 320' GM w/O spts (92%M, 6%G, 2%O) Morgan Mud @ 4356' Wt: 9.0 Vis: 58 WI: 5.6 Chl: 700 LCM: #2
4352 (-1155)	Sandstone	Lansing 4307 (-928)	DST #3 (LKC G) 4393'-4440' 30-60-30-60 IF: Built to 1" FF: No blow Rec: 1' MCO (54%O, 44%M, 2%G), 5'OCM (77%M, 23%O) Morgan Mud @ 4440' Wt: 9.2 Vis: 59 WI: 6.0 Chl: 800 LCM: #3
4382 (-1499)	Sandstone	Stark 4528 (-1149)	DST #4 (LKC H) 4438'-4492' 30-60-60-90 IF: Built to 1 1/2" FF: No blow Rec: 15' OCM (66%M, 32%O, 2%G) Morgan Mud @ 4580' Wt: 9.5 Vis: 62 WI: 6.0 Chl: 800 LCM: #3
4580 (-1203)	Sandstone	Mound City 4582 (-1203)	DST #5 (LKC J) 4492'-4530' 30-60-30-60 IF: Built to 1" FF: No blow Rec: 2' M w/O spts (99%M, 1%O) Morgan Mud @ 4690' Wt: 9.0 Vis: 54 WI: 5.6 Chl: 800 LCM: #4
4708 (-1329)	Sandstone	Lenapah 4591 (-1212)	DST #6 (LKC L) 4558'-4580' 30-60-60-90 IF: BOB (11") @ 6 mins ISI: Return built to 8 1/2" then died FF: BOB @ 8 1/2 mins FSL: No blow Rec: 1050' MW (97%W, 3%M), 295' MW (59%W, 41%M) Morgan Mud @ 4812' Wt: 9.2 Vis: 61 WI: 6.0 Chl: 800 LCM: #3
4787 (-1408)	Sandstone	Marmaton 4614 (-1235)	DST #7 (Marmaton C) 4626'-4690' 30-60-30-60 IF: Blow built to 1/2", died back, dead @ 26mins FF: No blow Rec: 30' M w/Trc O in tool (100%M) Morgan Mud @ 4812' Wt: 9.2 Vis: 61 WI: 6.0 Chl: 800 LCM: #3
		Excello 4754 (-1375)	DST #8 (FT Scott) 4684'-4760' 30-60-30-60 IF: 1/2" Blow @ open, built to 1 1/2" FF: No blow Rec: 5' M (100%M) Morgan Mud @ 4812' Wt: 9.2 Vis: 61 WI: 6.0 Chl: 800 LCM: #3
		Breezy Hill 4766 (-1387)	
		Celia 4787 (-1408)	
		RTD 4900 (-1521)	