



TEMPORARY ABANDONMENT WELL APPLICATION

OPERATOR: License# _____
 Name: _____
 Address 1: _____
 Address 2: _____
 City: _____ State: _____ Zip: _____ + _____
 Contact Person: _____
 Phone: (_____) _____
 Contact Person Email: _____
 Field Contact Person: _____
 Field Contact Person Phone: (_____) _____

API No. 15- _____
 Spot Description: _____
 _____ - _____ - _____ - _____ Sec. _____ Twp. _____ S. R. _____ E W
 _____ feet from N / S Line of Section
 _____ feet from E / W Line of Section
 GPS Location: Lat: _____, Long: _____
(e.g. xx.xxxxx) (e.g. -xxx.xxxxx)
 Datum: NAD27 NAD83 WGS84
 County: _____ Elevation: _____ GL KB
 Lease Name: _____ Well #: _____
 Well Type: (check one) Oil Gas OG WSW Other: _____
 SWD Permit #: _____ ENHR Permit #: _____
 Gas Storage Permit #: _____
 Spud Date: _____ Date Shut-In: _____

| | Conductor | Surface | Production | Intermediate | Liner | Tubing |
|------------------|-----------|---------|------------|--------------|-------|--------|
| Size | | | | | | |
| Setting Depth | | | | | | |
| Amount of Cement | | | | | | |
| Top of Cement | | | | | | |
| Bottom of Cement | | | | | | |

Casing Fluid Level from Surface: _____ How Determined? _____ Date: _____
 Casing Squeeze(s): _____ to _____ w / _____ sacks of cement, _____ to _____ w / _____ sacks of cement. Date: _____
(top) (bottom) (top) (bottom)
 Do you have a valid Oil & Gas Lease? Yes No
 Depth and Type: Junk in Hole at _____ Tools in Hole at _____ Casing Leaks: Yes No Depth of casing leak(s): _____
(depth) (depth)
 Type Completion: ALT. I ALT. II Depth of: DV Tool: _____ w / _____ sacks of cement Port Collar: _____ w / _____ sack of cement
(depth) (depth)
 Packer Type: _____ Size: _____ Inch Set at: _____ Feet
 Total Depth: _____ Plug Back Depth: _____ Plug Back Method: _____

Geological Data:

| Formation Name | Formation Top | Formation Base | Completion Information |
|----------------|---------------|----------------|--|
| 1. _____ | At: _____ | to _____ Feet | Perforation Interval _____ to _____ Feet or Open Hole Interval _____ to _____ Feet |
| 2. _____ | At: _____ | to _____ Feet | Perforation Interval _____ to _____ Feet or Open Hole Interval _____ to _____ Feet |

UNDER PENALTY OF PERJURY I HEREBY ATTEST THAT THE INFORMATION CONTAINED HEREIN IS TRUE AND CORRECT TO THE BEST OF MY KNOWLEDGE

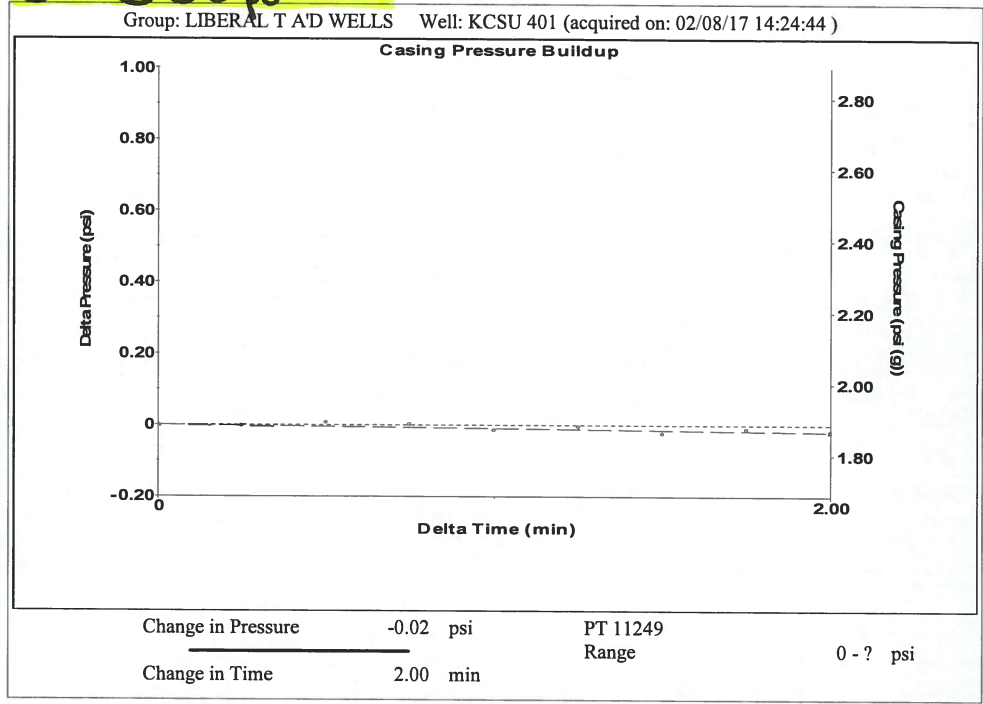
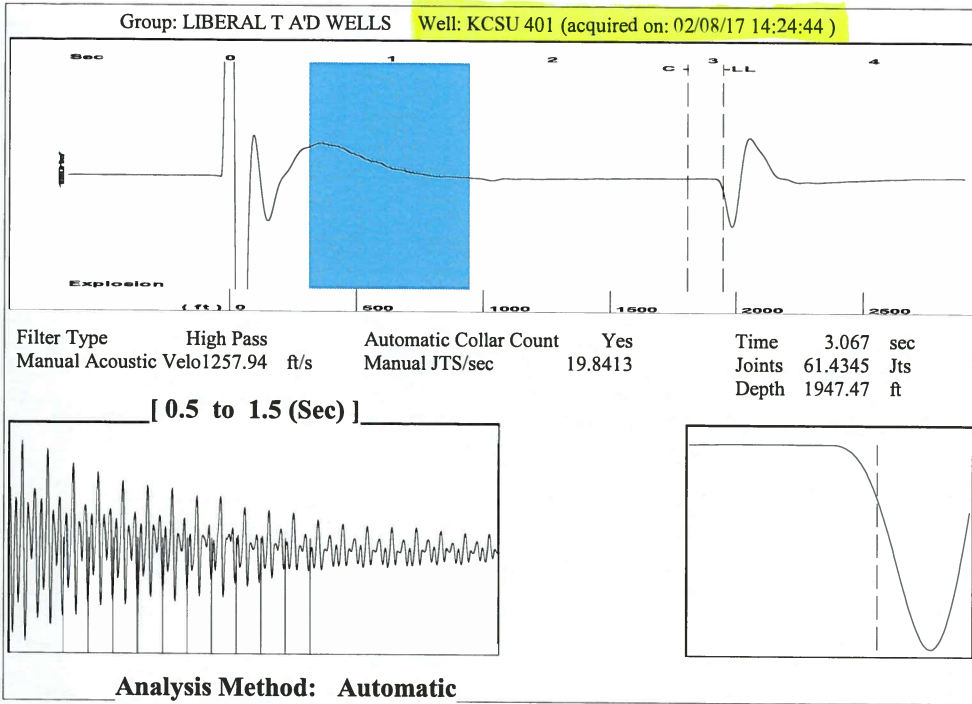
Submitted Electronically

| | | | | | |
|---|--|----------------|---------------------|----------------------|---------------------------------|
| Do NOT Write in This Space - KCC USE ONLY | Date Tested: _____ | Results: _____ | Date Plugged: _____ | Date Repaired: _____ | Date Put Back in Service: _____ |
| | Review Completed by: _____ Comments: _____ | | | | |
| TA Approved: <input type="checkbox"/> Yes <input type="checkbox"/> Denied Date: _____ | | | | | |

Mail to the Appropriate KCC Conservation Office:

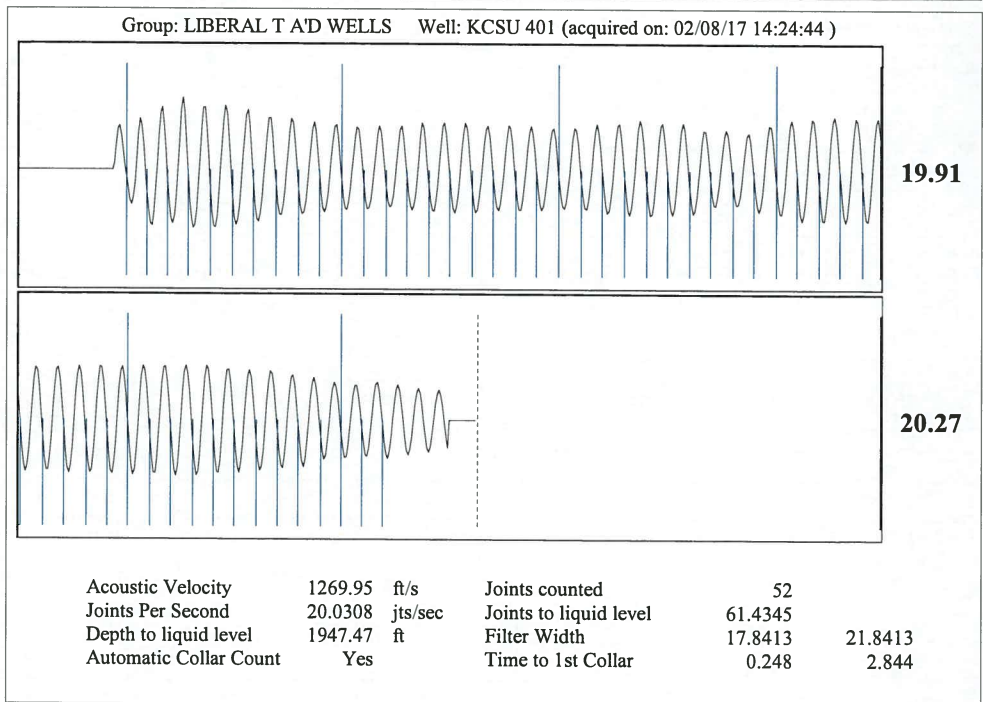
| | | |
|--|--|--------------------|
| | KCC District Office #1 - 210 E. Frontview, Suite A, Dodge City, KS 67801 | Phone 620.225.8888 |
| | KCC District Office #2 - 3450 N. Rock Road, Building 600, Suite 601, Wichita, KS 67226 | Phone 316.337.7400 |
| | KCC District Office #3 - 1500 SW Seventh Steet, Chanute, KS 66720 | Phone 620.432.2300 |
| | KCC District Office #4 - 2301 E. 13th Street, Hays, KS 67601-2651 | Phone 785.625.0550 |

Shot @ 300 ps:

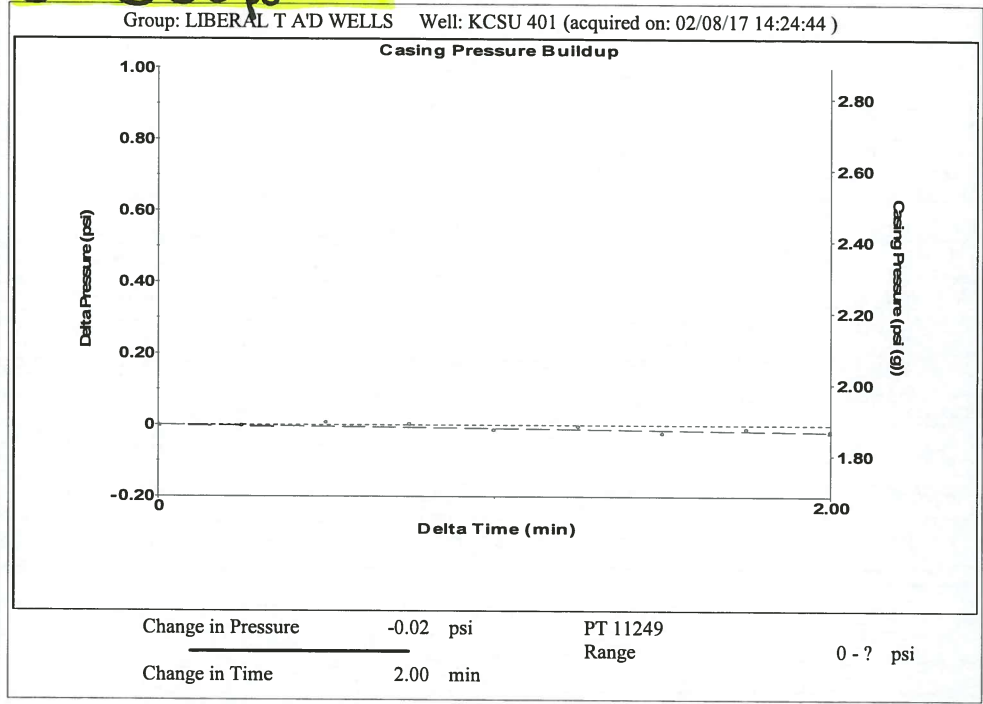
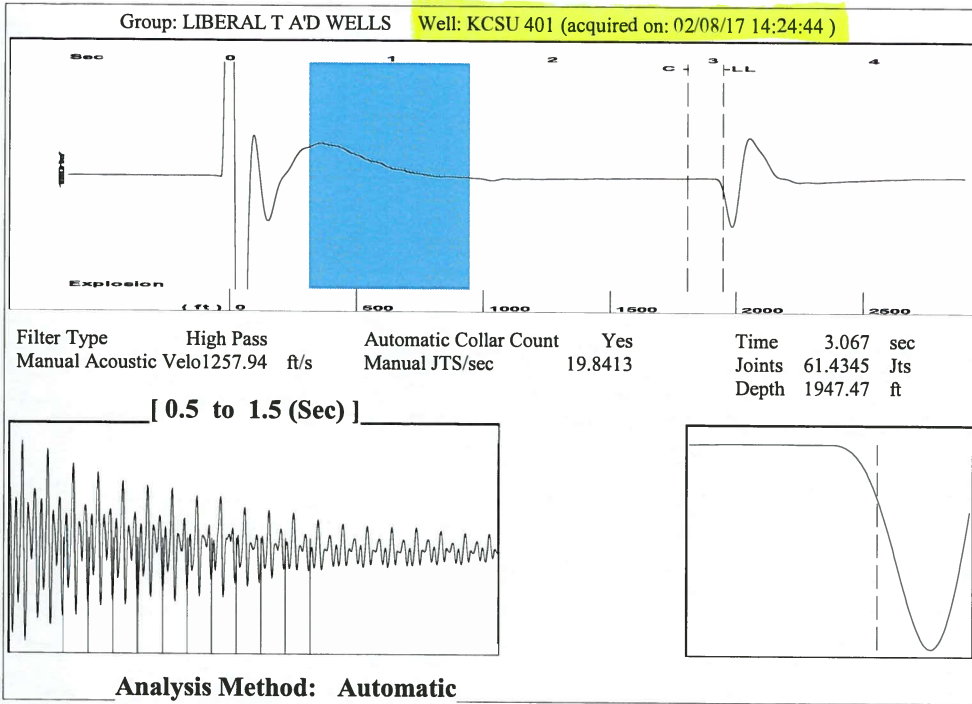


Group: LIBERAL T A'D WELLS Well: KCSU 401 (acquired on: 02/08/17 14:24:44)

| | | | |
|--------------------------------------|-------------------------------|-------------------------|---------------------------|
| Production | Potential | Casing Pressure | Producing |
| Oil - *- 0.0 BBL/D | | 1.9 psi (g) | |
| Water - *- 0.0 BBL/D | | Casing Pressure Buildup | |
| Gas - *- 0.0 Mscf/D | | -0.0 psi | |
| | | 2.00 min | |
| IPR Method Vogel | Gas/Liquid Interface Pressure | | Annular Gas Flow 0 Mscf/D |
| PBHP/SBHP 0.73 | 2.7 psi (g) | | % Liquid 100 % |
| Production Efficiency 42.4 | | | |
| Oil 40 deg.API | Liquid Level Depth | | |
| Water 1.05 Sp.Gr.H2O | 1947.47 ft | | |
| Gas 0.71 Sp.Gr.AIR | | | |
| Acoustic Velocity 1269.95 ft/s | Pump Intake Depth | | |
| | 6529.00 ft | | |
| | Formation Depth | | |
| | 6592.00 ft | | |
| Formation Submergence | | Pump Intake | |
| Total Gaseous Liquid Column HT (TVD) | 4582 ft | 1484.1 psi (g) | |
| Equivalent Gas Free Liquid HT (TVD) | 4582 ft | Producing BHP | |
| | | 1512.8 psi (g) | |
| Acoustic Test | | Static BHP | |
| | | 2069.1 psi (g) | |

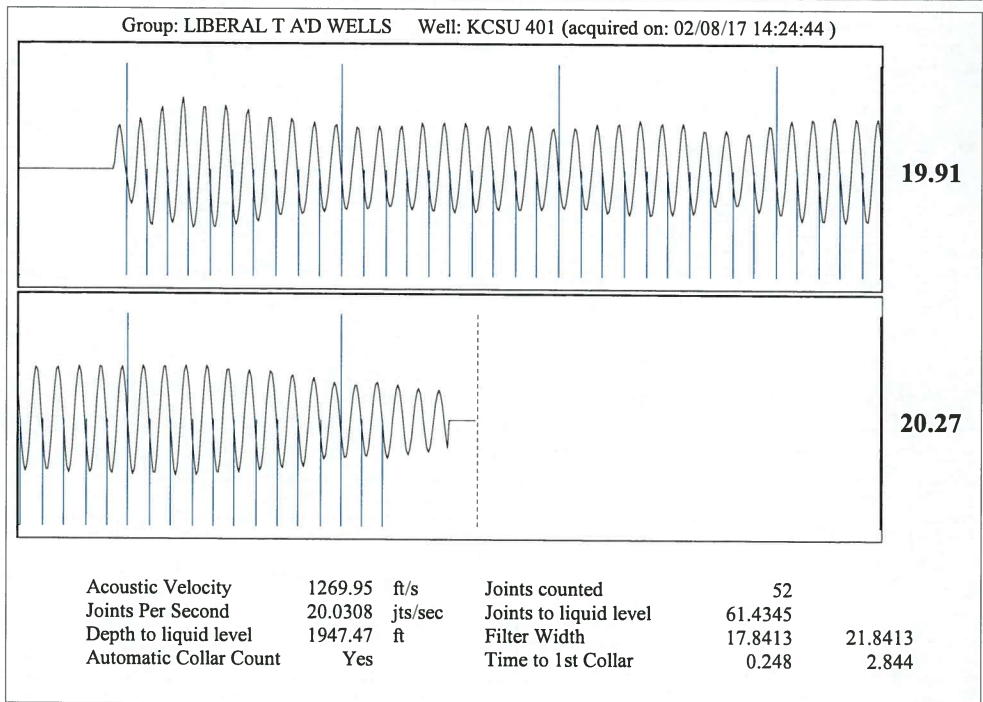


Shot @ 300 ps:



Group: LIBERAL T A'D WELLS Well: KCSU 401 (acquired on: 02/08/17 14:24:44)

| | | | |
|--|--------------------------------------|----------------------------------|---------------------------|
| Production | Potential | Casing Pressure | Producing |
| Oil - *- 0.0 BBL/D | | 1.9 psi (g) | |
| Water - *- 0.0 BBL/D | | Casing Pressure Buildup -0.0 psi | |
| Gas - *- 0.0 Mscf/D | | 2.00 min | |
| IPR Method Vogel | Gas/Liquid Interface Pressure | 2.7 psi (g) | Annular Gas Flow 0 Mscf/D |
| PBHP/SBHP 0.73 | | | % Liquid 100 % |
| Production Efficiency 42.4 | | | |
| Oil 40 deg.API | Liquid Level Depth | 1947.47 ft | |
| Water 1.05 Sp.Gr.H2O | | | |
| Gas 0.71 Sp.Gr.AIR | Pump Intake Depth | 6529.00 ft | |
| Acoustic Velocity 1269.95 ft/s | Formation Depth | 6592.00 ft | |
| | | | |
| Formation Submergence | | | Pump Intake |
| Total Gaseous Liquid Column HT (TVD) 4582 ft | | | 1484.1 psi (g) |
| Equivalent Gas Free Liquid HT (TVD) 4582 ft | | | Producing BHP |
| | | | 1512.8 psi (g) |
| Acoustic Test | | | Static BHP |
| | | | 2069.1 psi (g) |



February 14, 2017

Katherine McClurkan
Merit Energy Company, LLC
13727 Noel Road Suite 1200
Dallas, TX 75240

Re: Temporary Abandonment
API 15-189-20706-00-01
Kinney Chester Sand Unit 401
SE/4 Sec.26-34S-35W
Stevens County, Kansas

Dear Katherine McClurkan:

Your application for Temporary Abandonment (TA) for the above-listed well is denied for the following reasons(s):

Shut-in Over 10 years

Pursuant to K.A.R. 82-3-111, the well must be plugged or returned to service by March 14, 2017.

If you wish to instead file an application for an exception to the 10-year limitation of K.A.R. 82-3-111, demonstrating why it is necessary to TA the well for more than 10 years, then you must file the application for an exception by March 14, 2017.

This deadline does NOT override any compliance deadline given to you in any Commission Order.

You may contact me if you have any questions.

Sincerely,
Michael Maier
KCC DISTRICT 1