



TEMPORARY ABANDONMENT WELL APPLICATION

OPERATOR: License# _____
 Name: _____
 Address 1: _____
 Address 2: _____
 City: _____ State: _____ Zip: _____ + _____
 Contact Person: _____
 Phone: (_____) _____
 Contact Person Email: _____
 Field Contact Person: _____
 Field Contact Person Phone: (_____) _____

API No. 15- _____
 Spot Description: _____
 _____ - _____ - _____ - _____ Sec. _____ Twp. _____ S. R. _____ E W
 _____ feet from N / S Line of Section
 _____ feet from E / W Line of Section
 GPS Location: Lat: _____, Long: _____
(e.g. xx.xxxxx) (e.g. -xxx.xxxxx)
 Datum: NAD27 NAD83 WGS84
 County: _____ Elevation: _____ GL KB
 Lease Name: _____ Well #: _____
 Well Type: (check one) Oil Gas OG WSW Other: _____
 SWD Permit #: _____ ENHR Permit #: _____
 Gas Storage Permit #: _____
 Spud Date: _____ Date Shut-In: _____

	Conductor	Surface	Production	Intermediate	Liner	Tubing
Size						
Setting Depth						
Amount of Cement						
Top of Cement						
Bottom of Cement						

Casing Fluid Level from Surface: _____ How Determined? _____ Date: _____
 Casing Squeeze(s): _____ to _____ w / _____ sacks of cement, _____ to _____ w / _____ sacks of cement. Date: _____
(top) (bottom) (top) (bottom)
 Do you have a valid Oil & Gas Lease? Yes No
 Depth and Type: Junk in Hole at _____ Tools in Hole at _____ Casing Leaks: Yes No Depth of casing leak(s): _____
(depth) (depth)
 Type Completion: ALT. I ALT. II Depth of: DV Tool: _____ w / _____ sacks of cement Port Collar: _____ w / _____ sack of cement
(depth) (depth)
 Packer Type: _____ Size: _____ Inch Set at: _____ Feet
 Total Depth: _____ Plug Back Depth: _____ Plug Back Method: _____

Geological Data:

Formation Name	Formation Top	Formation Base	Completion Information
1. _____	At: _____	to _____ Feet	Perforation Interval _____ to _____ Feet or Open Hole Interval _____ to _____ Feet
2. _____	At: _____	to _____ Feet	Perforation Interval _____ to _____ Feet or Open Hole Interval _____ to _____ Feet

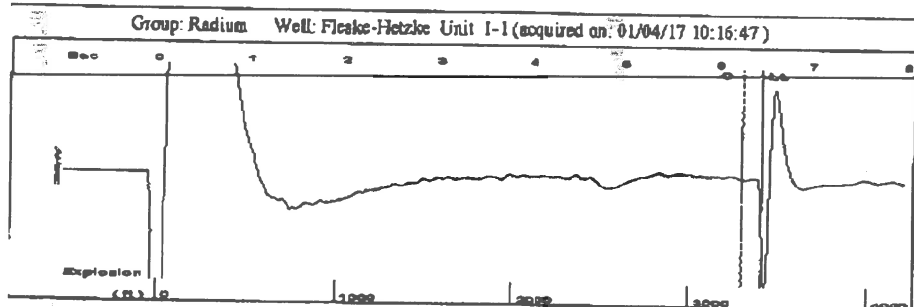
UNDER PENALTY OF PERJURY I HEREBY ATTEST THAT THE INFORMATION CONTAINED HEREIN IS TRUE AND CORRECT TO THE BEST OF MY KNOWLEDGE

Submitted Electronically

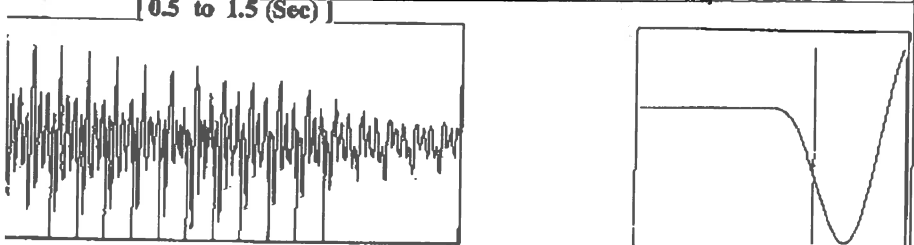
Do NOT Write in This Space - KCC USE ONLY	Date Tested: _____	Results: _____	Date Plugged: _____	Date Repaired: _____	Date Put Back in Service: _____
	Review Completed by: _____ Comments: _____				
TA Approved: <input type="checkbox"/> Yes <input type="checkbox"/> Denied Date: _____					

Mail to the Appropriate KCC Conservation Office:

	KCC District Office #1 - 210 E. Frontview, Suite A, Dodge City, KS 67801	Phone 620.225.8888
	KCC District Office #2 - 3450 N. Rock Road, Building 600, Suite 601, Wichita, KS 67226	Phone 316.337.7400
	KCC District Office #3 - 1500 SW Seventh Steet, Chanute, KS 66720	Phone 620.432.2300
	KCC District Office #4 - 2301 E. 13th Street, Hays, KS 67601-2651	Phone 785.625.0550

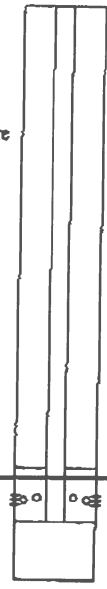


Filter Type High Pass Automatic Collar Count Yes Time 6.468 sec
 Manual Acoustic Velo 1009.68 ft/s Manual JTS/sec 16.6945 Joints 112.789 Jts
 Depth 3410.73 ft



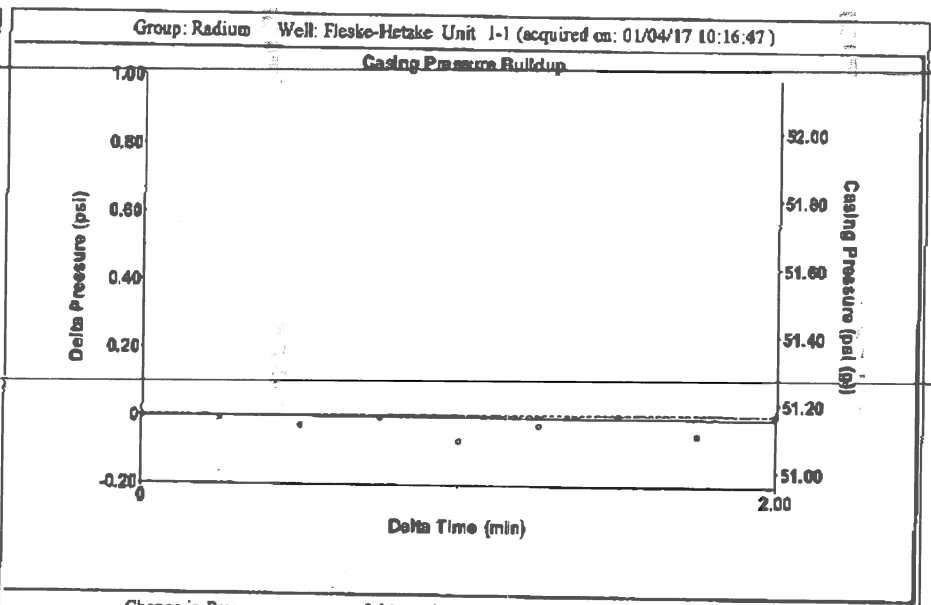
Analysis Method: Automatic

Production		Potential		Casing Pressure		Producing	
Oil	-.-	-.-	BBL/D	51.2	psi (g)	Annular Gas Flow	0 Mscf/D
Water	-.-	-.-	BBL/D	0.012	psi	% Liquid	100 %
Gas	-.-	-.-	Mscf/D	2.00	min		
IPR Method		Vogel		Gas/Liquid Interface Pressure	58.6	psi (g)	
PBHP/SBHP		-.-		Liquid Level Depth	3410.73	ft	
Production Efficiency		0.0		Pump Intake Depth	3871.00	ft	
Oil	40	deg API		Formation Depth	3684.00	ft	
Water	1.05	Sp.Gr.H2O					
Gas	0.93	Sp.Gr.AIR					
Acoustic Velocity	1054.65	ft/s					
Formation Submergence							
Total Gaseous Liquid Column HT (TVD)	460	ft					
Equivalent Gas Free Liquid HT (TVD)	460	ft					

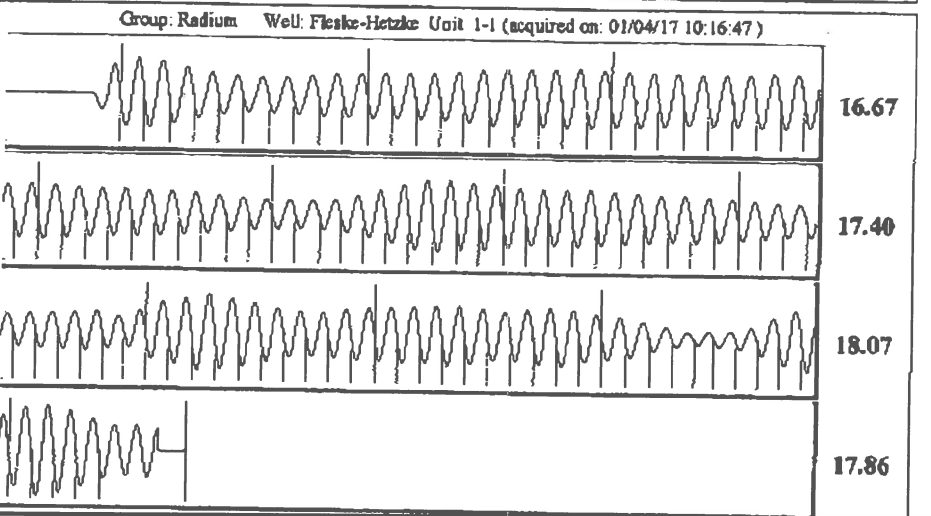


Acoustic Test

Pump Intake 214.5 psi (g)
 Producing BHP 151.5 psi (g)
 Static BHP -.- psi (g)



Change in Pressure 0.01 psi PT13440
 Change in Time 2.00 min Range 0 - ? psi



Acoustic Velocity	1054.65	ft/s	Joints counted	104
Joints Per Second	17.438	jts/sec	Joints to liquid level	112.789
Depth to liquid level	3410.73	ft	Filter Width	14.6945
Automatic Collar Count	Yes		Time to 1st Collar	0.288
				18.6945
				6.252

February 07, 2017

Loveness Mpanje
F. G. Holl Company L.L.C.
9431 E CENTRAL STE 100
WICHITA, KS 67206-2563

Re: Temporary Abandonment
API 15-145-21609-00-00
FLESKE/HETZKE UNIT 1-1
E/2 Sec.01-20S-16W
Pawnee County, Kansas

Dear Loveness Mpanje:

"Your temporary abandonment (TA) application for the well listed above has been approved. In accordance with K.A.R. 82-3-111 the TA status of this well will expire 02/07/2018.

- * If you return this well to service or plug it, please notify the District Office.
- * If you sell this well you are required to file a Transfer of Operator form, T-1.
- * If the well will remain temporarily abandoned, you must submit a new TA application, CP-111, before 02/07/2018.

You may contact me at the number above if you have questions.

Very truly yours,

Michael Maier"