



**REMARKS**

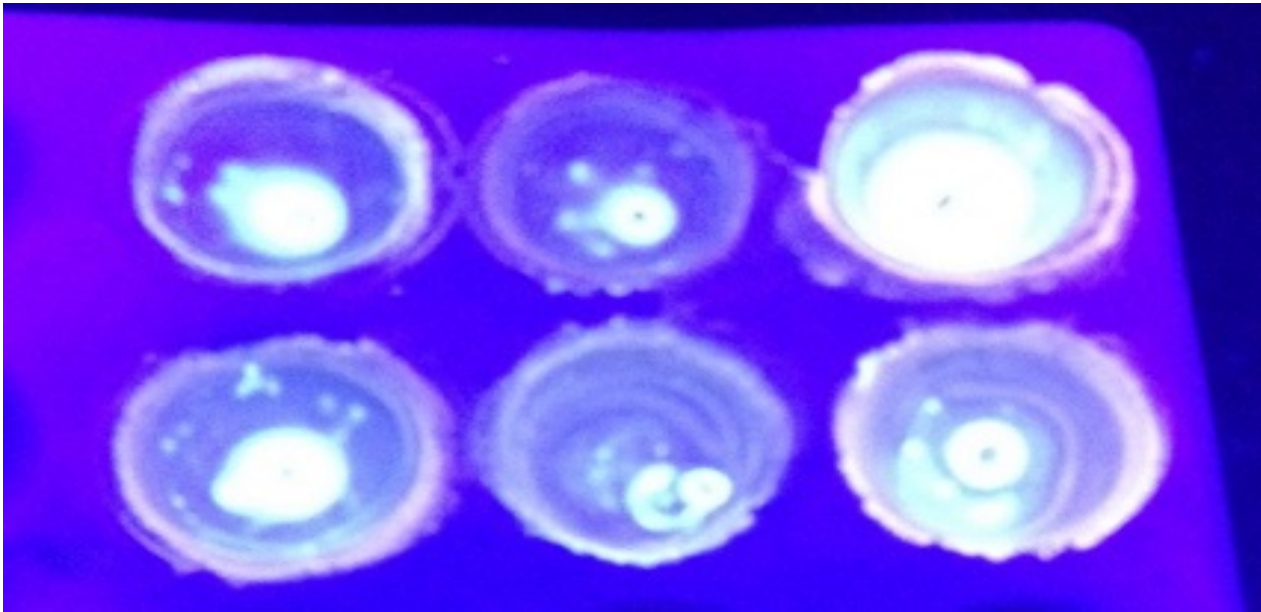
The only shows of oil encountered in this well were in the Miss Chert.

**DST CHARTS**

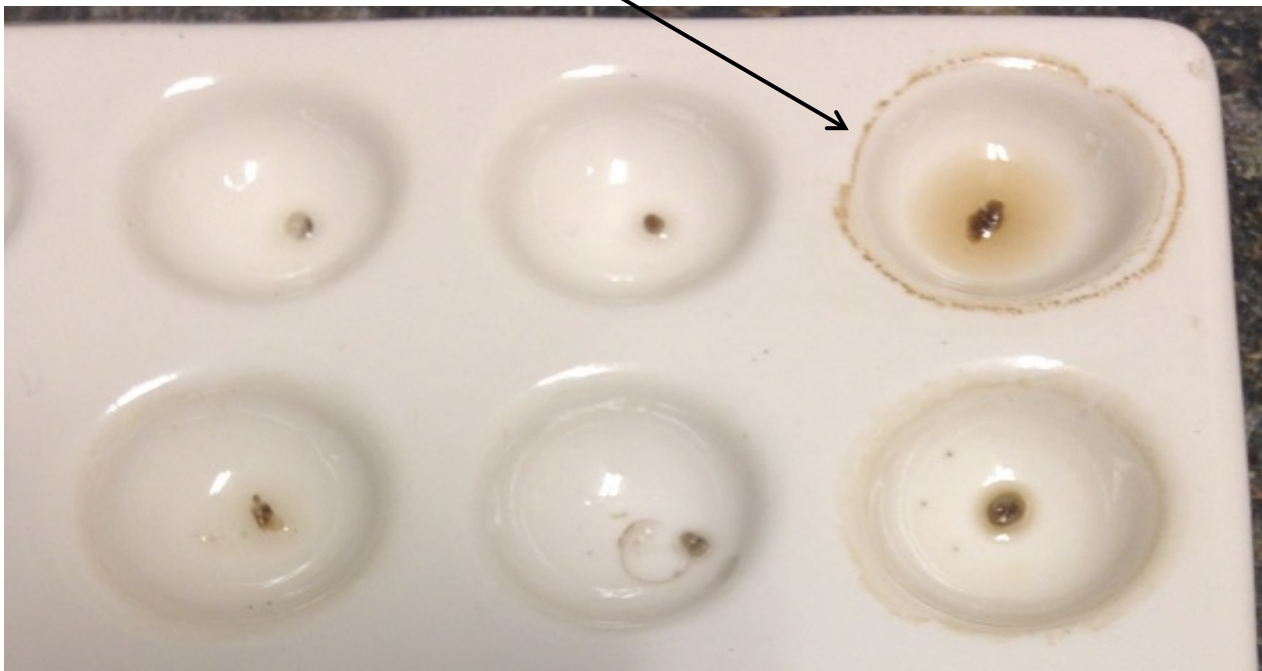
**NONE**

**Oil flourcense from top 10' of the Miss Chert sample from 2,070'-2,080'**

Immediate streaming cuts (using oil solvent) from the Miss Chert porosity leaving residual oil ring when dried.



Same photo under normal light, note brown residual ring of oil



LITHOLOGY

DEPTH

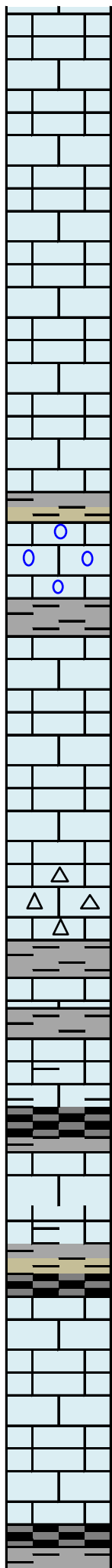
MIN/FT

DST's

SAMPLE DESCRIPTIONS

REMARKS

	0	5	10			
	1500				Sh, lt gr, sm sd grains, sm blk carb inclusions	On location 11/28, 5:30 pm
					Sh, gr, sm sd, md gr, well sort well cem, no por	
					Sh, lt gr to dk gr, trc pyr, trc pale gr sh	
					Sh, gr, with ls tn-brn, mxln dns	
	1550				Sh, gr, ls tn-brn, hd dns, mxln	<hr/> <b>LANSING</b> <b>1576 (-173)</b>
					Ls, wh-crm, mxln, hd dns, no por, wh ls chlky in part	
					Ls, wh-crm, mxln, hd dns, no por, sm mineral flour, trc pale grn sh	
					Ls, wh-crm, mxln, hd dns, no por, sm blk carb sh	
					Ls, wh-tn, mxln, trc foss & pyr, sm pale grn sh	
	1600				Sh pale grn to gr, sm rd-brn, mott in part, Ls, tn, mxlm to xln, no por, hd dns, sm chlky	
				Sh pale grn to gr & dull red		
				Ls, crm-tn, most chalk, foss, ool, mottled, slty in part, sm		
1650						



1700

Ls, tn-gr, foss, mxln-fxln, sm dull grn-gr, sh, trc pyr

Ls, tn-gr, mxln, dns, sm foss,

Ls, tn-gr to crm, mxln, dns, sm pale grn sh

1750

Ls, tn, mxln, hd, trc ool, with pale grn sh, pyr

11/29, 8:00 am

Sh, gr-blk, mott, with sm Ls, crm, foss chlky

Ls, wh-crm, soft chlky, ool to foss

1800

Ls, tn-gr, mxln to fxln, foss with chert tn

Ls, wh-crm, mxln, hd dns, no por

Ls, tn, hd dns with sm Sh, gr-dk gr

Ls, gr, fxln, grading to dirty Ls, gr with Sh, gr

1850

Sh, blk, carb, Sh, gr, abndt pyr

STARK  
1848 (-445)

Ls, crm-tn, mxln, hd dns, trc Chrt, wh, no por, NS, with Sh, gr-grn

Sh, blk, carb, Sh, gr, sm pyr

Ls, tn, mxln to chlky, trc foss, soft

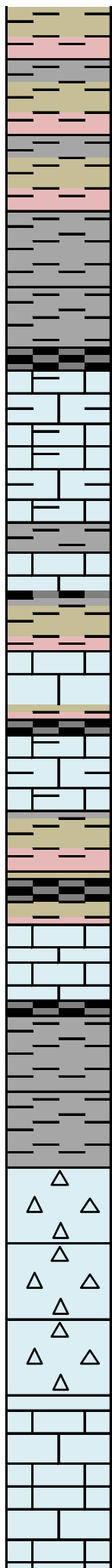
Ls, tn, mxln, hd dns, no por

1900

Ls, crm-tn, fxln, v foss, ool in prt, soft to chlky, NS

BASE KANSAS CITY  
1908 (-505)

Sh, dk gr-blk



1950

2000

2050

2100

Sh, vari-color, gr-grn-tn, pyr

Sh, pale grn, to sandy sh with wh ls  
cem, no por, NS

Sh, gr with carb inclusions, sandy in  
part, abndt pyr, np por, NS

Sh, dk gr-blk

Ls, tn-gr, argillaceous, foss in part

Ls, lt gr, hd dns, mxln, grading to mottled  
gr argillaceous Ls

Ls, lt gr to dull yellow mottled, hd  
dns, mxln with Sh, gr

Sh, vari colored gr-maroon, with  
Ls, tn, sm foss, hd dns, fxln

Sh, vari colored gr-maroon-dull yellow

Sh, vari colored gr-maroon-dull  
yellow, abndt pyr, with Ls, tn, mxln  
grading to argillaceous

Sh, blk, carb  
Ls, tn, mxln, hd dns

Sh, gr-brn-pale grn-blk  
Ls, tn-brn, mxln, hd dns, trc foss

Sh, brn-pale grn

Sh, blu-grn, trc chrt, wh-dull yellow, NSO

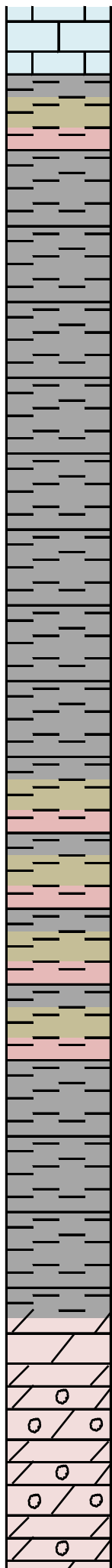
Chrt, wh, tripolitic, F-GSFO, scatt flour, f-  
g odor, immed strm cut, good halo  
ring, 10% with oil sat por in weathered  
chert por, 25% with dk brn oil droplets

Chrt, wh, slight SFO, no odor, poor  
scattered flour

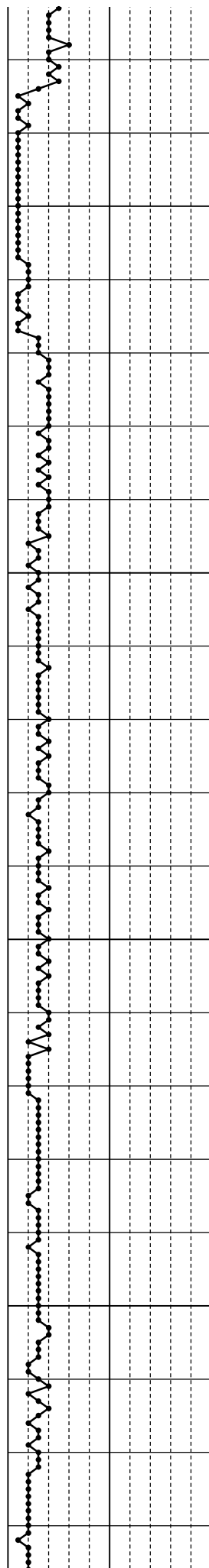
Ls, wh-crm, mxln to fxln, hd dns, no  
por, NSO

Miss Chert  
2067 (-664)

Miss Lime  
2104 (-701)



2150  
2200  
2250  
2300



Sh, pale grn-maroon-gr

Kinderhook  
2135 (-732)

Sh, gr, with very slty Sd, gr, pyr

Sh, gr, with very slty Sd, gr, abndt pyr

Sh, gr-maroon, mottled, with v slty  
Sd, gr, abndt pyr

Sh, gr, abndt pyr

Sh, gr-maroon with v slty Sd, gr, well  
cem, abndt pyr

Sh, orng-dull yellow-red, sm mottled

Sh, red-brn

Sh, lt brn, mottled

Hunton  
2302 (-899)

Dol, lt gr-wh, mxln-xln, sm rhombic  
vugs, hd dns, sm por, trc pyr, NSO, No  
odor, brite mineral flour

Dol, lt gr, hd, abndt pyr overgrowth, vugs  
and vln por, NSO

and xln por, NSO

2350

Dol, wh-crm, hd dns, mxln, with trc  
chrt, wh, NSO

2400

Dol, crm, mxln-xln, most hd dns, sm  
vuggy & xln por, Chrt, wh-lt tan, NSO

2450

Sh, pale grn, slightly sandy in part

Maquoketa  
2443 (-1040)

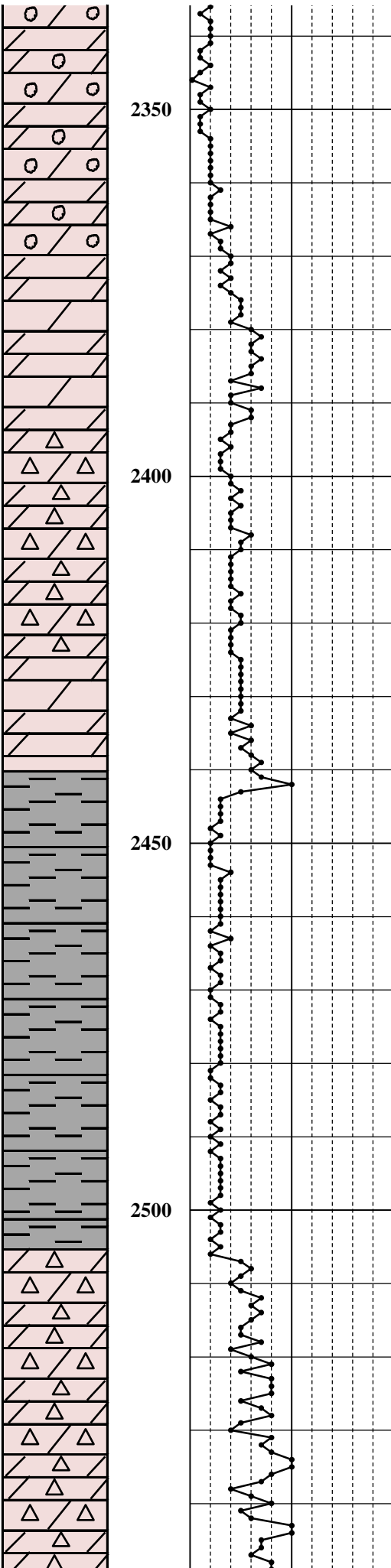
2500

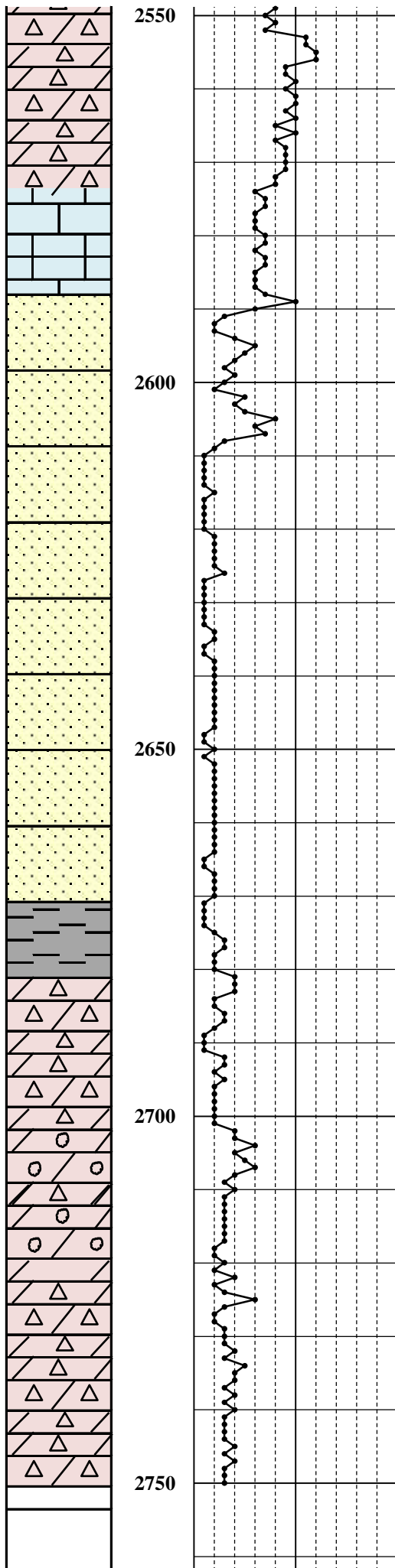
Sh, pale grn-grn, grading to ss, pale grn, f  
gr, well sort, well cem, argillaceous

Dol, wh-gr, micro-fine xln, abndt  
Chrt, tn, poor por, NSO

Viola  
2507 (-1104)

Chrt, tan, dol, tan, hd dns, mxln, no  
por, NSO





Ls, crm-buff, xln, no por, NSO

Ss, brn, f-m gr, qtz, well sort, su-ang to rounded, clean, well cem with ls, NSO

Ss, clear, qtz, course gr, fair por, well sorted, well rounded, frosted, ls cem, NSO

Ss, clear, qtz, course gr, v good por, well sorted, well rounded, frosted, NSO

Ss, clear, qtz, med gr, well sort, well cem, ls,

Ss, clear, qtz, course gr, v good por, well sorted, well rounded, frosted, NSO

Ss, clear, qtz, f-c gr, poor por, poorly sorted, well rounded, frosted, NSO

Sh, br & pale gr

Dol, gr-brn, mxln, hd dns, sm Chrt, wh, NSO

Dol, gr-tn, fxln to sucrosic, trc xvln vugs, p-f por, with Chrt clr-wh, NSO

Dol, gr-tn, xln to sucrosic, trc xvln vugs, good inter-xln por, with Chrt clr-wh, NSO

Dol, crm, xln to sucrosic, good inter-xln por, with Chrt clr-wh, NSO

Simpson  
2590 (-1187)

Arbuckle  
2681 (-1278)

TD 2,750'  
11/30/2016