



TRILOBITE TESTING, INC.

DRILL STEM TEST REPORT

Slawson Exploration Co., Inc.

26/5s/36w Rawlins KS

204 N. Robinson Ave.
STE 2300
Oklahoma City, OK 73102
ATTN: Pete Debenham

Faber #1-26

Job Ticket: 62697

DST#: 4

Test Start: 2016.09.29 @ 23:17:00

GENERAL INFORMATION:

Formation: **Cherokee / Johnson**

Deviated: No Whipstock: ft (KB)

Time Tool Opened: 00:43:45

Time Test Ended: 05:06:00

Test Type: Conventional Bottom Hole (Reset)

Tester: James Winder

Unit No: 83

Interval: 4705.00 ft (KB) To 4739.00 ft (KB) (TVD)

Reference Elevations: 3368.00 ft (KB)

Total Depth: 4739.00 ft (KB) (TVD)

3363.00 ft (CF)

Hole Diameter: 7.88 inches Hole Condition: Fair

KB to GR/CF: 5.00 ft

Serial #: 6625 Inside

Press@RunDepth: 69.03 psig @ 4706.00 ft (KB)

Capacity: 8000.00 psig

Start Date: 2016.09.29

End Date:

2016.09.30

Last Calib.: 2016.09.30

Start Time: 23:17:05

End Time:

05:05:59

Time On Btm: 2016.09.30 @ 00:42:15

Time Off Btm: 2016.09.30 @ 03:18:00

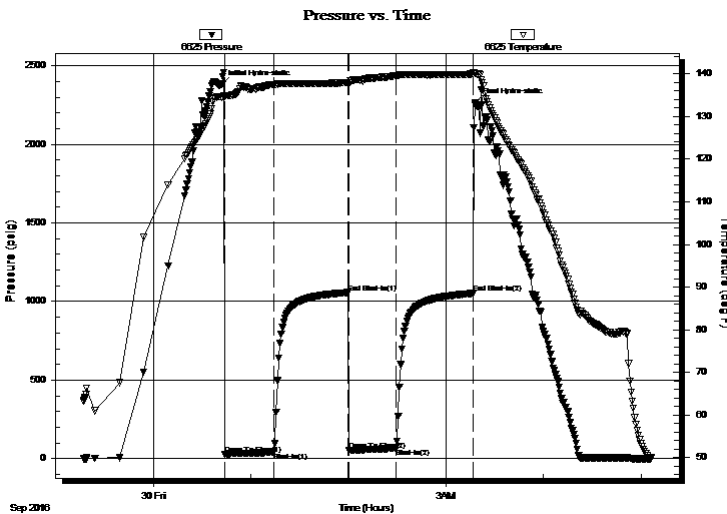
TEST COMMENT: 30 - IF: Blow built to 2 1/4"

45 - IS: No blow back

30 - FF: No blow

45 - FS: No blow

PRESSURE SUMMARY



Time (Min.)	Pressure (psig)	Temp (deg F)	Annotation
0	2380.28	134.55	Initial Hydro-static
2	25.64	134.60	Open To Flow (1)
32	41.04	137.47	Shut-In(1)
78	1056.97	137.95	End Shut-In(1)
78	52.44	137.81	Open To Flow (2)
107	69.03	139.59	Shut-In(2)
155	1051.53	139.92	End Shut-In(2)
156	2264.62	140.03	Final Hydro-static

Recovery

Length (ft)	Description	Volume (bbl)
59.00	WCM w/trace oil 90%m, 10%w	0.29
59.00	Mud w/trace oil 100%m	0.29

* Recovery from multiple tests

Gas Rates

	Choke (inches)	Pressure (psig)	Gas Rate (Mcf/d)



**TRILOBITE
TESTING, INC**

DRILL STEM TEST REPORT

FLUID SUMMARY

Slawson Exploration Co., Inc.

26/5s/36w Rawlins KS

204 N. Robinson Ave.
STE 2300
Oklahoma City, OK 73102
ATTN: Pete Debenham

Faber #1-26

Job Ticket: 62697

DST#: 4

Test Start: 2016.09.29 @ 23:17:00

Mud and Cushion Information

Mud Type: Gel Chem
Mud Weight: 9.00 lb/gal
Viscosity: 60.00 sec/qt
Water Loss: 9.18 in³
Resistivity: ohm.m
Salinity: 3000.00 ppm
Filter Cake: 1.00 inches

Cushion Type:
Cushion Length: ft
Cushion Volume: bbl
Gas Cushion Type:
Gas Cushion Pressure: psig

Oil API: deg API
Water Salinity: 8500 ppm

Recovery Information

Recovery Table

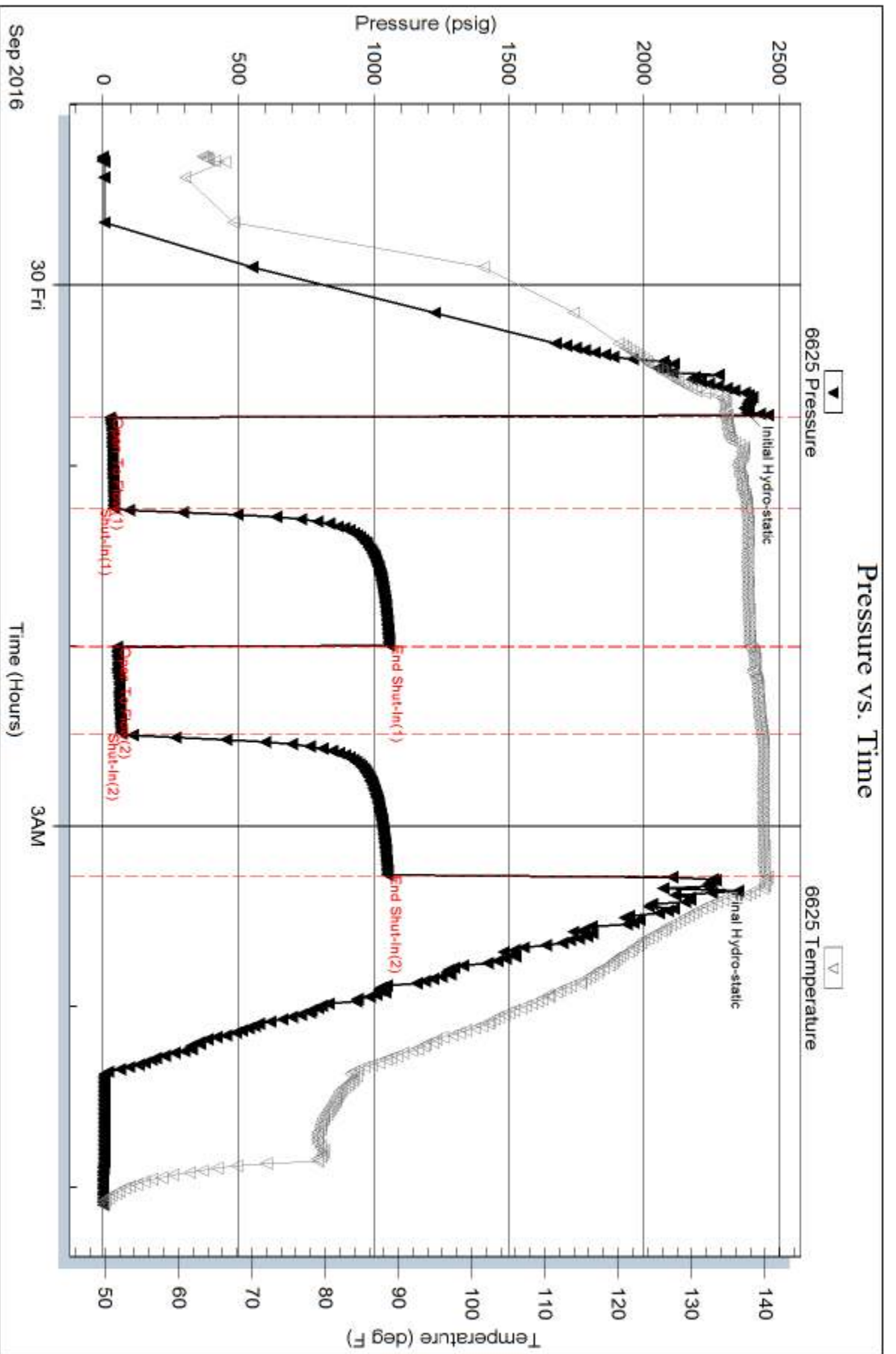
Length ft	Description	Volume bbl
59.00	WCM w /trace oil 90%m, 10%w	0.290
59.00	Mud w /trace oil 100%m	0.290

Total Length: 118.00 ft Total Volume: 0.580 bbl

Num Fluid Samples: 0 Num Gas Bombs: 0 Serial #:

Laboratory Name: Laboratory Location:

Recovery Comments: RW = 1.13 ohms @ 45.6 deg F Chlorides = 8,500 ppm
Sample used to check chlorides was dirty



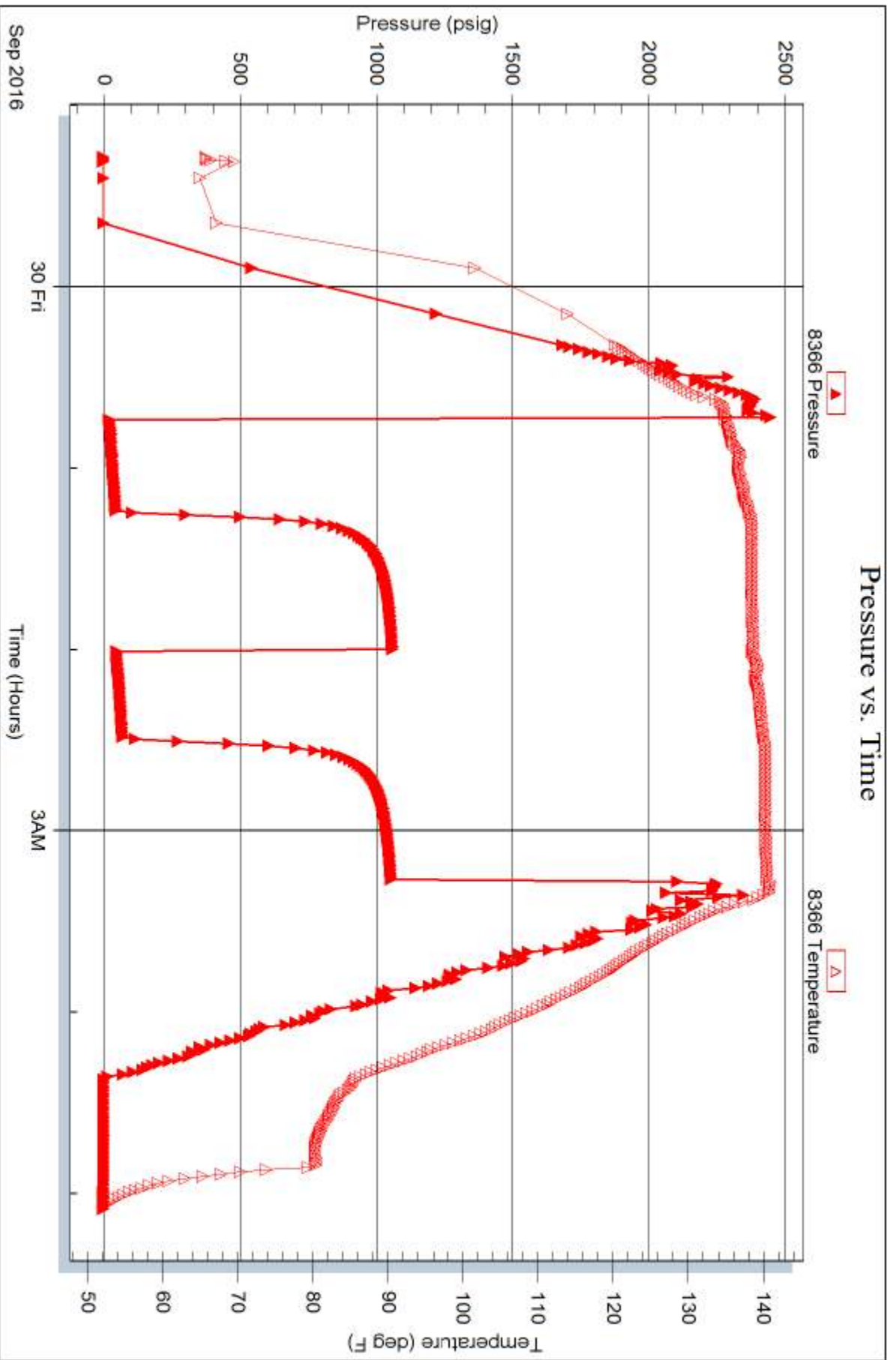
Serial #: 8366

Outside

Saw son Exploration Co., Inc.

Faber #1-26

DST Test Number: 4



Trilobite Testing, Inc

Ref. No: 62697

Printed: 2016.09.30 @ 07:04:27