



**TRILOBITE  
TESTING, INC**

# DRILL STEM TEST REPORT

Suemar Explormation & Production, LLC

**26 6s 28w Sheridan, Ks**

539 N Carancahua Ste 1100  
Corpus Christie, Tx 78401

**Spressor 2-26**

Job Ticket: 63457

**DST#: 1**

ATTN: Bob Peterson

Test Start: 2016.10.30 @ 09:48:00

## GENERAL INFORMATION:

Formation: **Oread**

Deviated: No Whipstock: ft (KB)

Time Tool Opened: 12:05:00

Time Test Ended: 17:18:00

Test Type: Conventional Bottom Hole (Initial)

Tester: Bradley Walter

Unit No: 78

**Interval: 3743.00 ft (KB) To 3765.00 ft (KB) (TVD)**

Reference Elevations: 2683.00 ft (KB)

Total Depth: 3765.00 ft (KB) (TVD)

2678.00 ft (CF)

Hole Diameter: 7.88 inches Hole Condition: Good

KB to GR/CF: 5.00 ft

**Serial #: 8365 Inside**

Press@RunDepth: 207.60 psig @ 3553.00 ft (KB)

Capacity: 8000.00 psig

Start Date: 2016.10.30

End Date:

2016.10.30

Last Calib.: 2016.10.30

Start Time: 09:48:05

End Time:

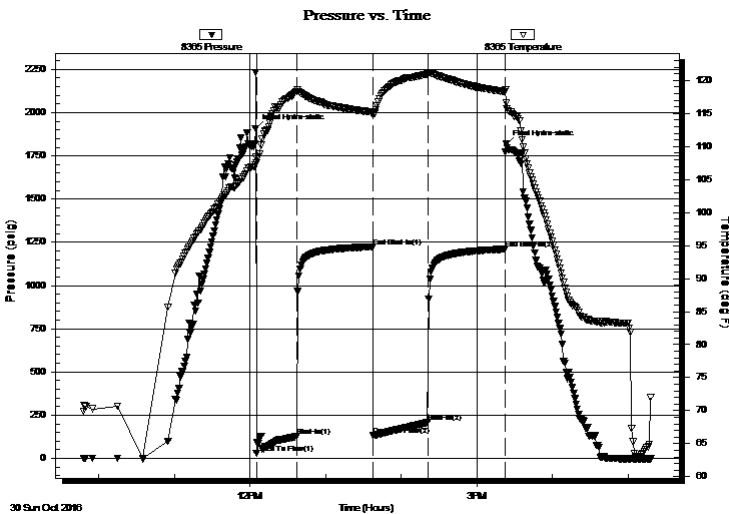
17:17:59

Time On Btm: 2016.10.30 @ 12:04:15

Time Off Btm: 2016.10.30 @ 15:23:15

TEST COMMENT: IF: 7" blow.  
IS: No return.  
FF: 9" blow.  
FS: No return.

## PRESSURE SUMMARY



Time (Min.)	Pressure (psig)	Temp (deg F)	Annotation
0	1908.49	107.22	Initial Hydro-static
1	30.33	107.53	Open To Flow (1)
33	127.99	118.29	Shut-In(1)
93	1224.02	115.18	End Shut-In(1)
94	132.46	114.77	Open To Flow (2)
137	207.60	120.97	Shut-In(2)
199	1211.00	118.29	End Shut-In(2)
199	1816.97	116.57	Final Hydro-static

## Recovery

Length (ft)	Description	Volume (bbl)
355.00	somcw 1o10m 89w	3.28
20.00	oil 100o	0.28
0.00	80' GIP	0.00

## Gas Rates

	Choke (inches)	Pressure (psig)	Gas Rate (Mcf/d)





**TRILOBITE  
TESTING, INC**

# DRILL STEM TEST REPORT

**TOOL DIAGRAM**

Suemar Explormation & Production, LLC

**26 6s 28w Sheridan, Ks**

539 N Carancahua Ste 1100  
Corpus Christie, Tx 78401

**Spressor 2-26**

Job Ticket: 63457

**DST#: 1**

ATTN: Bob Peterson

Test Start: 2016.10.30 @ 09:48:00

## Tool Information

Drill Pipe:	Length: 3361.00 ft	Diameter: 3.80 inches	Volume: 47.15 bbl	Tool Weight: 2500.00 lb
Heavy Wt. Pipe:	Length: 0.00 ft	Diameter: inches	Volume: 0.00 bbl	Weight set on Packer: 25000.00 lb
Drill Collar:	Length: 187.00 ft	Diameter: 2.25 inches	Volume: 0.92 bbl	Weight to Pull Loose: 65000.00 lb
			<u>Total Volume: 48.07 bbl</u>	Tool Chased 4.00 ft
Drill Pipe Above KB:	23.00 ft			String Weight: Initial 51000.00 lb
Depth to Top Packer:	3552.00 ft			Final 53000.00 lb
Depth to Bottom Packer:	ft			
Interval between Packers:	22.00 ft			
Tool Length:	49.00 ft			
Number of Packers:	2	Diameter: 6.75 inches		

Tool Comments:

## Tool Description

Tool Description	Length (ft)	Serial No.	Position	Depth (ft)	Accum. Lengths
Change Over Sub	1.00			3526.00	
Shut In Tool	5.00			3531.00	
Hydraulic tool	5.00			3536.00	
Jars	5.00			3541.00	
Safety Joint	2.00			3543.00	
Packer	5.00			3548.00	27.00 Bottom Of Top Packer
Packer	4.00			3552.00	
Stubb	1.00			3553.00	
Recorder	0.00	8365	Inside	3553.00	
Recorder	0.00	8845	Outside	3553.00	
Perforations	18.00			3571.00	
Bullnose	3.00			3574.00	22.00 Bottom Packers & Anchor

**Total Tool Length: 49.00**



**TRILOBITE  
TESTING, INC**

# DRILL STEM TEST REPORT

## FLUID SUMMARY

Suemar Explormation & Production, LLC

**26 6s 28w Sheridan, Ks**

539 N Carancahua Ste 1100  
Corpus Christie, Tx 78401

**Spressor 2-26**

Job Ticket: 63457

**DST#: 1**

ATTN: Bob Peterson

Test Start: 2016.10.30 @ 09:48:00

### Mud and Cushion Information

Mud Type: Gel Chem

Cushion Type:

Oil API:

33 deg API

Mud Weight: 9.00 lb/gal

Cushion Length:

ft

Water Salinity:

ppm

Viscosity: 65.00 sec/qt

Cushion Volume:

bbbl

Water Loss: 5.60 in<sup>3</sup>

Gas Cushion Type:

Resistivity: ohm.m

Gas Cushion Pressure:

psig

Salinity: 800.00 ppm

Filter Cake: 2.00 inches

### Recovery Information

Recovery Table

Length ft	Description	Volume bbbl
355.00	somcw 1o10m 89w	3.276
20.00	oil 100o	0.281
0.00	80' GIP	0.000

Total Length: 375.00 ft      Total Volume: 3.557 bbl

Num Fluid Samples: 0

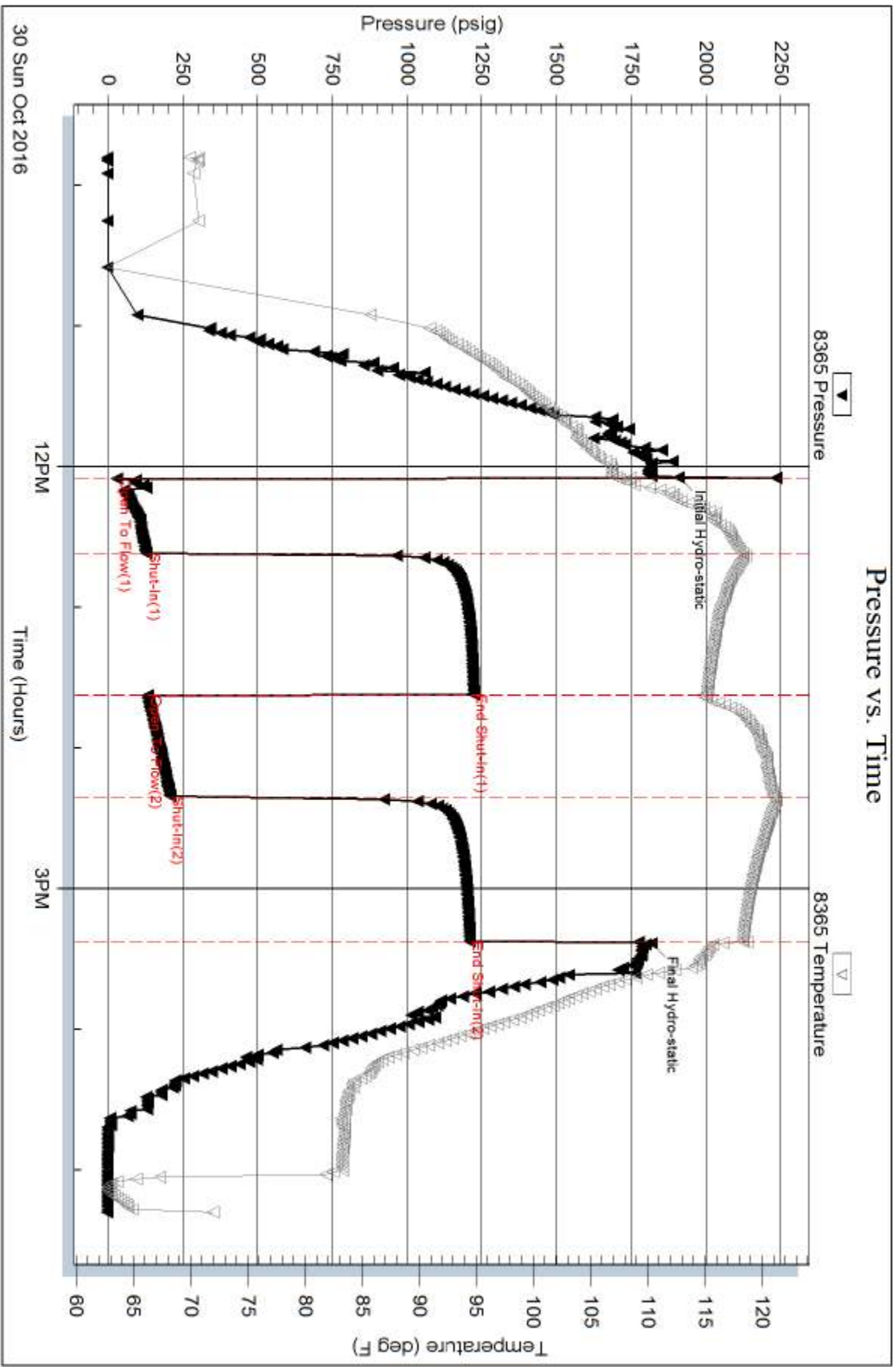
Num Gas Bombs: 0

Serial #:

Laboratory Name:

Laboratory Location:

Recovery Comments: rw is .171 @ 60F = 51000ppm

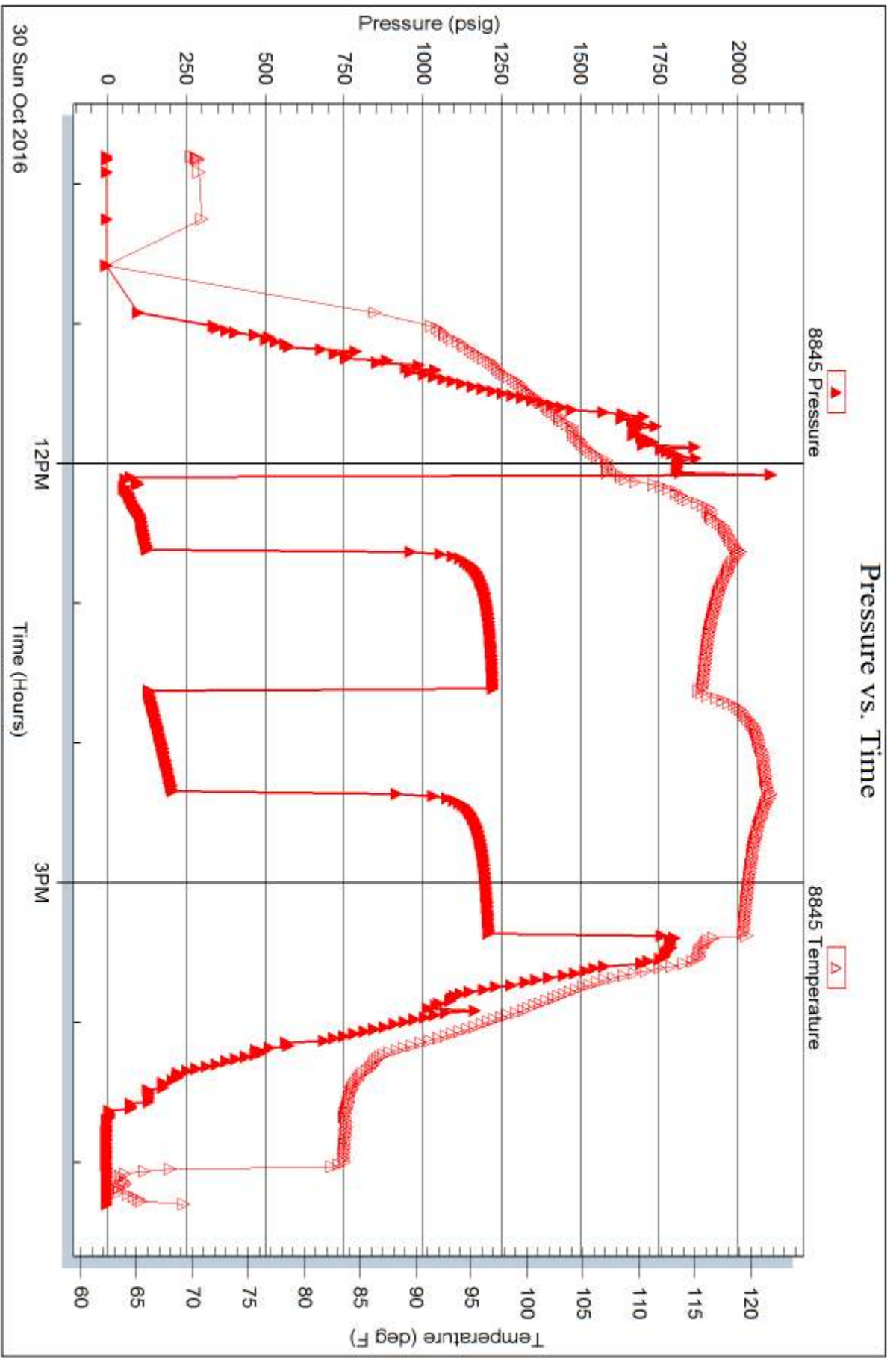


Serial #: 8845

Outside Suemar Exploration & Production, LLC

Spressor 2-26

DST Test Number: 1



Trilobite Testing, Inc

Ref. No: 63457

Printed: 2016.10.30 @ 21:48:58



**TRILOBITE TESTING, INC**

# DRILL STEM TEST REPORT

Suemaour Explormation & Production, LLC

**26 6s 28w Sheridan, Ks**

539 N Carancahua Ste 1100  
Corpus Christie, Tx 78401

**Spressor 2-26**

Job Ticket: 63458

**DST#: 2**

ATTN: Bob Peterson

Test Start: 2016.10.31 @ 03:03:00

## GENERAL INFORMATION:

Formation: **Toronto - LKC A**  
 Deviated: No Whipstock: ft (KB)  
 Time Tool Opened: 05:28:00  
 Time Test Ended: 11:38:15  
 Interval: **3790.00 ft (KB) To 3850.00 ft (KB) (TVD)**  
 Total Depth: 3850.00 ft (KB) (TVD)  
 Hole Diameter: 7.88 inches Hole Condition: Good  
 Test Type: Conventional Bottom Hole (Reset)  
 Tester: Bradley Walter  
 Unit No: 78  
 Reference Elevations: 2683.00 ft (KB)  
 2678.00 ft (CF)  
 KB to GR/CF: 5.00 ft

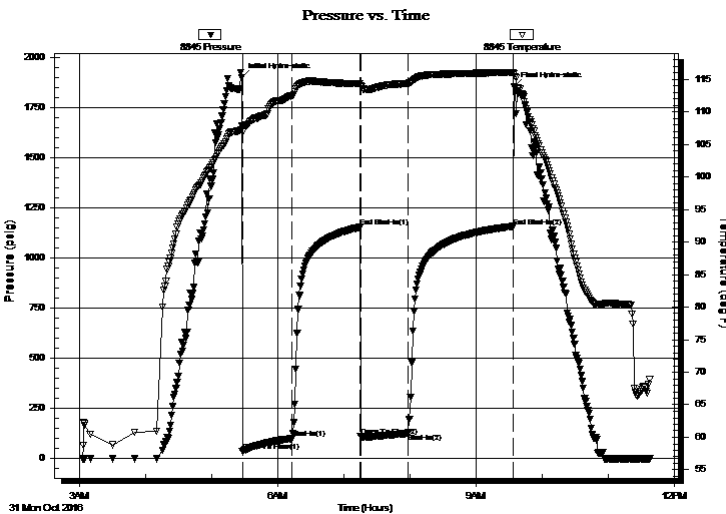
## Serial #: 8845

**Outside**

Press@RunDepth: 124.24 psig @ 3791.00 ft (KB) Capacity: 8000.00 psig  
 Start Date: 2016.10.31 End Date: 2016.10.31 Last Calib.: 2016.10.31  
 Start Time: 03:03:05 End Time: 11:38:15 Time On Btm: 2016.10.31 @ 05:27:45  
 Time Off Btm: 2016.10.31 @ 09:34:45

TEST COMMENT: IF: 3" blow.  
 IS: No return.  
 FF: 6" blow.  
 FS: Surface return, died in ten min.

## PRESSURE SUMMARY



Time (Min.)	Pressure (psig)	Temp (deg F)	Annotation
0	1899.81	107.76	Initial Hydro-static
1	33.55	106.87	Open To Flow (1)
46	98.03	112.46	Shut-In(1)
107	1152.30	114.30	End Shut-In(1)
108	108.70	113.92	Open To Flow (2)
151	124.24	114.36	Shut-In(2)
246	1156.83	116.04	End Shut-In(2)
247	1854.94	115.83	Final Hydro-static

## Recovery

Length (ft)	Description	Volume (bbl)
60.00	gocm 5g 35o 60m	0.30
160.00	gmco 5g 20m 75o	1.09
40.00	oil 100o (heavy under 20api)	0.56
0.00	50' GIP	0.00

\* Recovery from multiple tests

## Gas Rates

	Choke (inches)	Pressure (psig)	Gas Rate (Mcf/d)







**TRILOBITE  
TESTING, INC**

# DRILL STEM TEST REPORT

**TOOL DIAGRAM**

Suemaour Explormation & Production, LLC

**26 6s 28w Sheridan, Ks**

539 N Carancahua Ste 1100  
Corpus Christie, Tx 78401

**Spressor 2-26**

Job Ticket: 63458

**DST#: 2**

ATTN: Bob Peterson

Test Start: 2016.10.31 @ 03:03:00

## Tool Information

Drill Pipe:	Length: 3610.00 ft	Diameter: 3.80 inches	Volume: 50.64 bbl	Tool Weight: 2500.00 lb
Heavy Wt. Pipe:	Length: 0.00 ft	Diameter: inches	Volume: 0.00 bbl	Weight set on Packer: 25000.00 lb
Drill Collar:	Length: 187.00 ft	Diameter: 2.25 inches	Volume: 0.92 bbl	Weight to Pull Loose: 65000.00 lb
			<u>Total Volume: 51.56 bbl</u>	Tool Chased 0.00 ft
Drill Pipe Above KB:	34.00 ft			String Weight: Initial 51000.00 lb
Depth to Top Packer:	3790.00 ft			Final 52000.00 lb
Depth to Bottom Packer:	ft			
Interval between Packers:	60.00 ft			
Tool Length:	87.00 ft			
Number of Packers:	2	Diameter: 6.75 inches		

Tool Comments:

## Tool Description

**Length (ft) Serial No. Position Depth (ft) Accum. Lengths**

Tool Description	Length (ft)	Serial No.	Position	Depth (ft)	Accum. Lengths
Change Over Sub	1.00			3764.00	
Shut In Tool	5.00			3769.00	
Hydraulic tool	5.00			3774.00	
Jars	5.00			3779.00	
Safety Joint	2.00			3781.00	
Packer	5.00			3786.00	27.00 Bottom Of Top Packer
Packer	4.00			3790.00	
Stubb	1.00			3791.00	
Recorder	0.00	8365	Inside	3791.00	
Recorder	0.00	8845	Outside	3791.00	
Perforations	23.00			3814.00	
Change Over Sub	1.00			3815.00	
Drill Pipe	31.00			3846.00	
Change Over Sub	1.00			3847.00	
Bullnose	3.00			3850.00	60.00 Bottom Packers & Anchor

**Total Tool Length: 87.00**



**TRILOBITE  
TESTING, INC**

# DRILL STEM TEST REPORT

## FLUID SUMMARY

Suemaaur Explormation & Production, LLC

**26 6s 28w Sheridan, Ks**

539 N Carancahua Ste 1100  
Corpus Christie, Tx 78401

**Spressor 2-26**

Job Ticket: 63458

**DST#: 2**

ATTN: Bob Peterson

Test Start: 2016.10.31 @ 03:03:00

### Mud and Cushion Information

Mud Type: Gel Chem

Cushion Type:

Oil API:

0 deg API

Mud Weight: 9.00 lb/gal

Cushion Length:

ft

Water Salinity:

0 ppm

Viscosity: 59.00 sec/qt

Cushion Volume:

bbf

Water Loss: 6.00 in<sup>3</sup>

Gas Cushion Type:

Resistivity: ohm.m

Gas Cushion Pressure:

psig

Salinity: 1000.00 ppm

Filter Cake: 2.00 inches

### Recovery Information

Recovery Table

Length ft	Description	Volume bbf
60.00	gocm 5g 35o 60m	0.295
160.00	gmco 5g 20m 75o	1.087
40.00	oil 100o (heavy under 20api)	0.561
0.00	50' GIP	0.000

Total Length: 260.00 ft      Total Volume: 1.943 bbf

Num Fluid Samples: 0

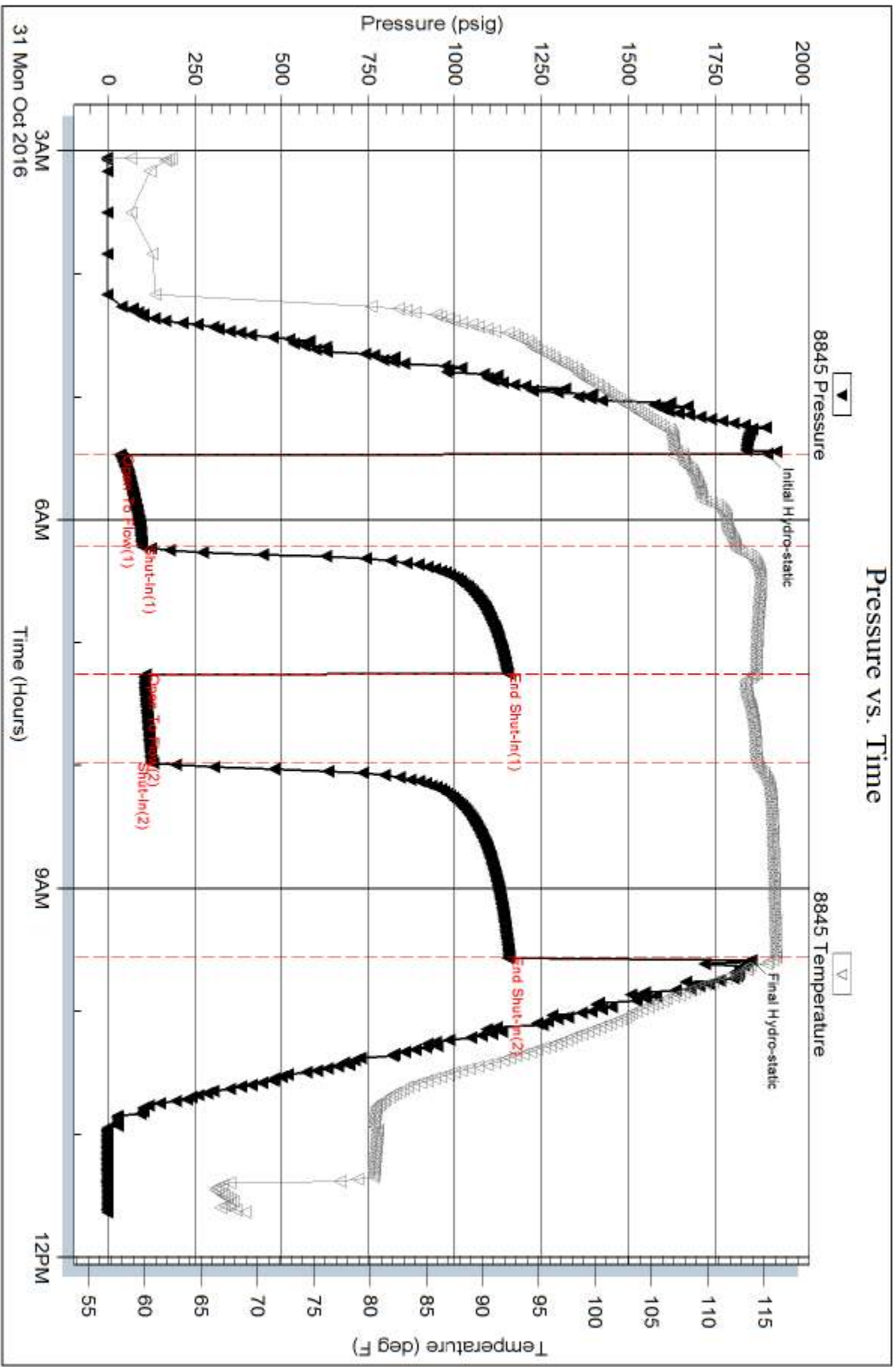
Num Gas Bombs: 0

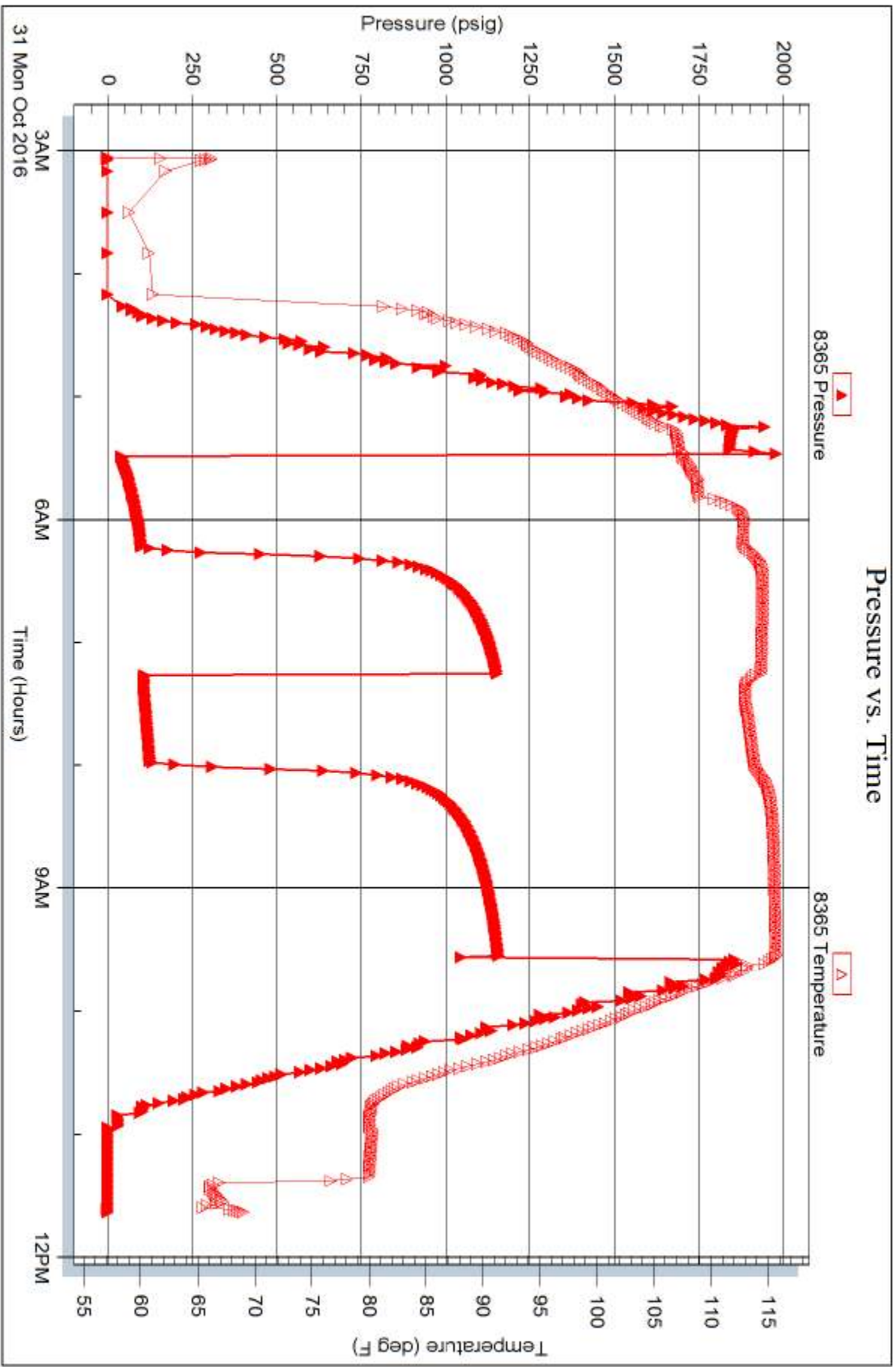
Serial #:

Laboratory Name:

Laboratory Location:

Recovery Comments: heavy oil under 20 api







**TRILOBITE TESTING, INC**

# DRILL STEM TEST REPORT

Suemaour Explormation & Production, LLC

**26 6s 28w Sheridan, Ks**

539 N Carancahua Ste 1100  
Corpus Christie, Tx 78401

**Spressor 2-26**

Job Ticket: 63459

**DST#: 3**

ATTN: Bob Peterson

Test Start: 2016.10.31 @ 17:38:00

## GENERAL INFORMATION:

Formation: **LKC C**

Deviated: No Whipstock: ft (KB)

Time Tool Opened: 19:12:45

Time Test Ended: 01:59:45

Test Type: Conventional Bottom Hole (Reset)

Tester: Bradley Walter

Unit No: 78

**Interval: 3853.00 ft (KB) To 3870.00 ft (KB) (TVD)**

Reference Elevations: 2683.00 ft (KB)

Total Depth: 3870.00 ft (KB) (TVD)

2678.00 ft (CF)

Hole Diameter: 7.88 inches Hole Condition: Good

KB to GR/CF: 5.00 ft

**Serial #: 8845 Outside**

Press@RunDepth: 341.92 psig @ 3854.00 ft (KB)

Capacity: 8000.00 psig

Start Date: 2016.10.31

End Date:

2016.11.01

Last Calib.: 2016.11.01

Start Time: 17:38:05

End Time:

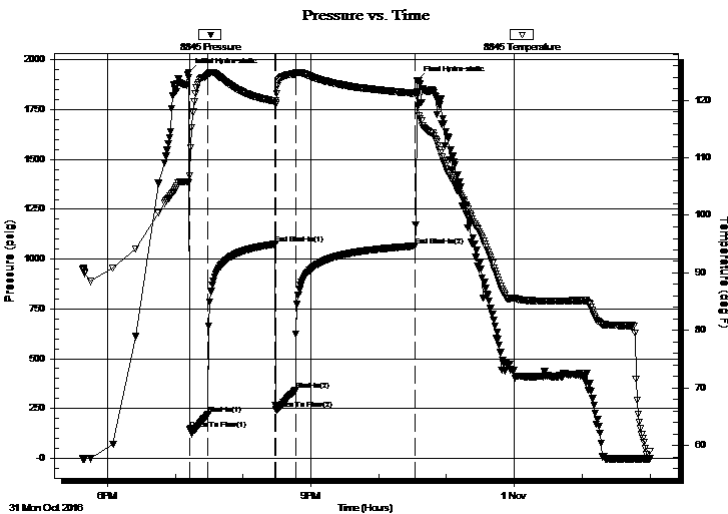
01:59:44

Time On Btm: 2016.10.31 @ 19:12:00

Time Off Btm: 2016.10.31 @ 22:34:00

TEST COMMENT: IF: BOB @ 1 min.  
IS: 3" return, receded to 2".  
FF: BOB @ 1 min.  
FS: 4" return, receded to 3".

## PRESSURE SUMMARY



Time (Min.)	Pressure (psig)	Temp (deg F)	Annotation
0	1937.74	105.72	Initial Hydro-static
1	145.91	106.91	Open To Flow (1)
17	221.41	124.39	Shut-In(1)
77	1075.39	119.84	End Shut-In(1)
77	244.76	119.52	Open To Flow (2)
95	341.92	124.58	Shut-In(2)
201	1066.04	121.21	End Shut-In(2)
202	1897.21	120.64	Final Hydro-static

## Recovery

Length (ft)	Description	Volume (bbl)
120.00	gmco 40g 30m 30o	0.59
680.00	go 20g 80o	8.93
0.00	820' GIP	0.00

\* Recovery from multiple tests

## Gas Rates

Choke (inches)	Pressure (psig)	Gas Rate (Mcf/d)



**TRILOBITE TESTING, INC**

# DRILL STEM TEST REPORT

Suemaur Explormation & Production, LLC

**26 6s 28w Sheridan, Ks**

539 N Carancahua Ste 1100  
Corpus Christie, Tx 78401

**Spressor 2-26**

Job Ticket: 63459

**DST#: 3**

ATTN: Bob Peterson

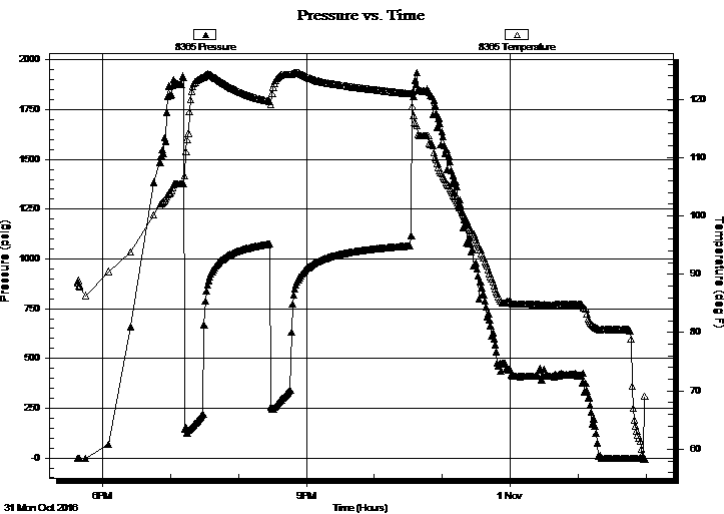
Test Start: 2016.10.31 @ 17:38:00

## GENERAL INFORMATION:

Formation: <b>LKC C</b>			
Deviated: No Whipstock:	ft (KB)	Test Type: Conventional Bottom Hole (Reset)	
Time Tool Opened: 19:12:45		Tester: Bradley Walter	
Time Test Ended: 01:59:45		Unit No: 78	
<b>Interval: 3853.00 ft (KB) To 3870.00 ft (KB) (TVD)</b>		Reference Elevations: 2683.00 ft (KB)	
Total Depth: 3870.00 ft (KB) (TVD)		2678.00 ft (CF)	
Hole Diameter: 7.88 inches	Hole Condition: Good	KB to GR/CF: 5.00 ft	

<b>Serial #: 8365</b>	<b>Inside</b>				
Press@RunDepth:	psig @	3854.00 ft (KB)	Capacity:	8000.00 psig	
Start Date:	2016.10.31	End Date:	2016.11.01	Last Calib.:	2016.11.01
Start Time:	17:38:05	End Time:	01:59:29	Time On Btm:	
				Time Off Btm:	

**TEST COMMENT:** IF: BOB @ 1 min.  
 IS: 3" return, receded to 2".  
 FF: BOB @ 1 min.  
 FS: 4" return, receded to 3".



## PRESSURE SUMMARY

Time (Min.)	Pressure (psig)	Temp (deg F)	Annotation

## Recovery

Length (ft)	Description	Volume (bbl)
120.00	gmco 40g 30m 30o	0.59
680.00	go 20g 80o	8.93
0.00	820' GIP	0.00

\* Recovery from multiple tests

## Gas Rates

Choke (inches)	Pressure (psig)	Gas Rate (Mcf/d)



**TRILOBITE  
TESTING, INC**

# DRILL STEM TEST REPORT

**FLUID SUMMARY**

Suemaaur Explormation & Production, LLC

**26 6s 28w Sheridan, Ks**

539 N Carancahua Ste 1100  
Corpus Christie, Tx 78401

**Spressor 2-26**

Job Ticket: 63459

**DST#: 3**

ATTN: Bob Peterson

Test Start: 2016.10.31 @ 17:38:00

## Mud and Cushion Information

Mud Type: Gel Chem

Cushion Type:

Oil API:

34 deg API

Mud Weight: 9.00 lb/gal

Cushion Length:

ft

Water Salinity:

0 ppm

Viscosity: 54.00 sec/qt

Cushion Volume:

bbbl

Water Loss: 6.00 in<sup>3</sup>

Gas Cushion Type:

Resistivity: ohm.m

Gas Cushion Pressure:

psig

Salinity: 1000.00 ppm

Filter Cake: 2.00 inches

## Recovery Information

Recovery Table

Length ft	Description	Volume bbbl
120.00	gmco 40g 30m 30o	0.590
680.00	go 20g 80o	8.928
0.00	820' GIP	0.000

Total Length: 800.00 ft      Total Volume: 9.518 bbl

Num Fluid Samples: 0

Num Gas Bombs: 0

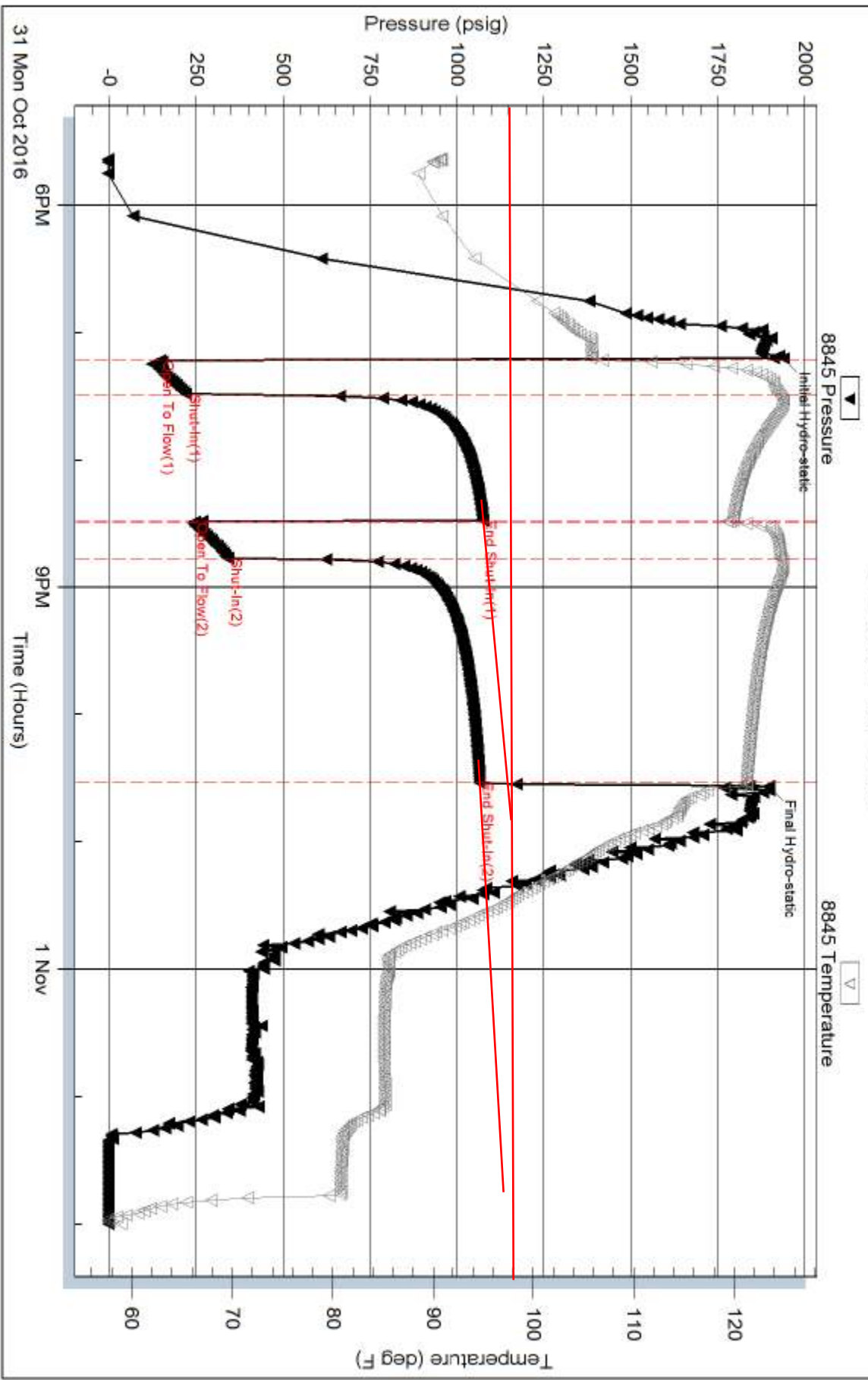
Serial #:

Laboratory Name:

Laboratory Location:

Recovery Comments:

### Pressure vs. Time





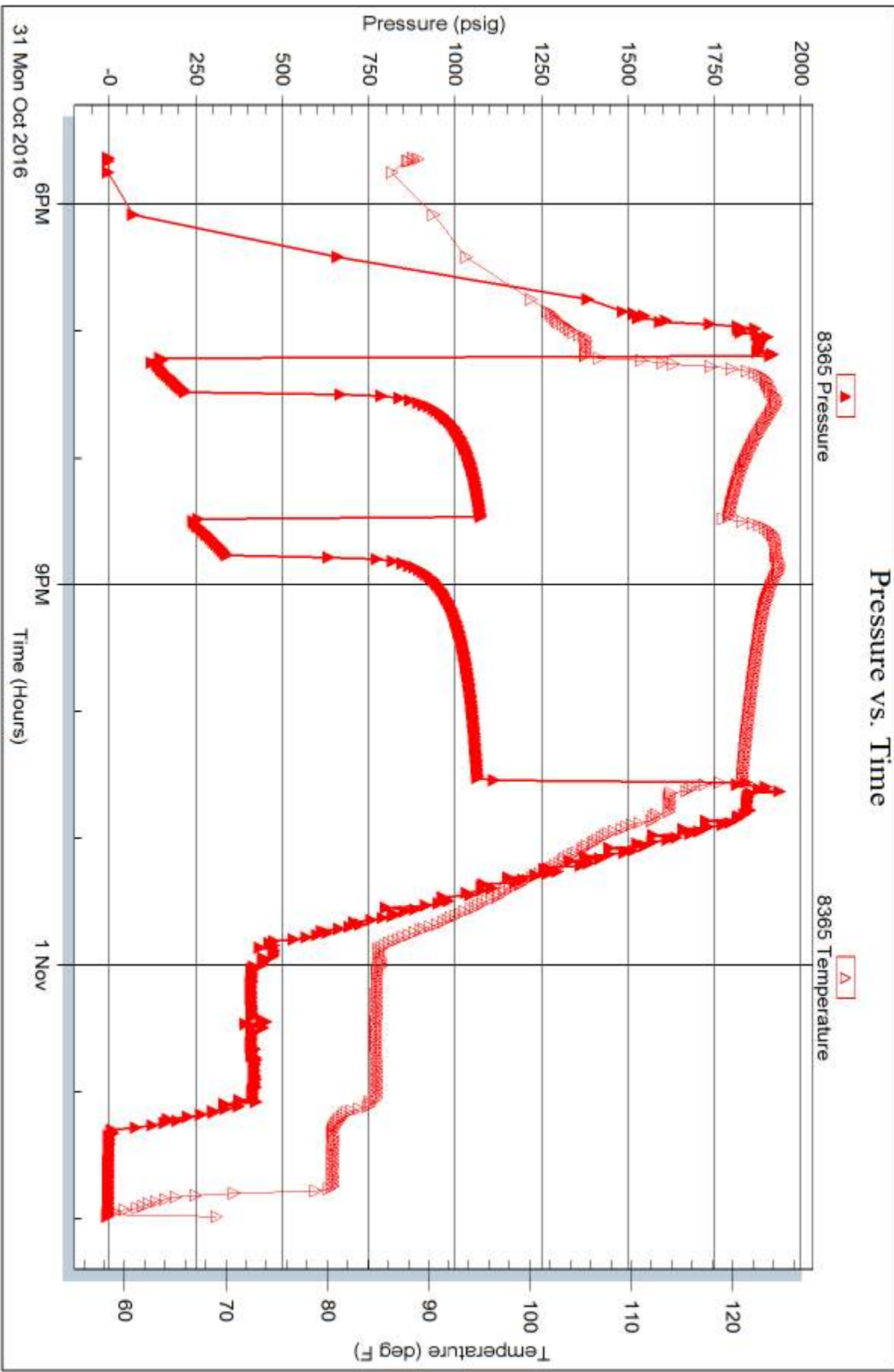
Serial #: 8365

Inside

Suenaar Exploration & Production, LLC

Spressor 2-26

DST Test Number: 3



Trilobite Testing, Inc

Ref. No: 63459

Printed: 2016.11.01 @ 07:47:23



**TRILOBITE TESTING, INC**

# DRILL STEM TEST REPORT

Suemaour Explormation & Production, LLC

**26 6s 28w Sheridan, Ks**

539 N Carancahua Ste 1100  
Corpus Christie, Tx 78401

**Spressor 2-26**

Job Ticket: 63460

**DST#: 4**

ATTN: Bob Peterson

Test Start: 2016.11.01 @ 13:58:00

## GENERAL INFORMATION:

Formation: **LKC - G**

Deviated: No Whipstock: ft (KB)

Time Tool Opened: 15:41:45

Time Test Ended: 21:20:15

Test Type: Conventional Bottom Hole (Reset)

Tester: Bradley Walter

Unit No: 78

**Interval: 3907.00 ft (KB) To 3922.00 ft (KB) (TVD)**

Reference Elevations: 2683.00 ft (KB)

Total Depth: 3922.00 ft (KB) (TVD)

2678.00 ft (CF)

Hole Diameter: 7.88 inches Hole Condition: Good

KB to GR/CF: 5.00 ft

**Serial #: 8845 Outside**

Press@RunDepth: 91.91 psig @ 3908.00 ft (KB)

Capacity: 8000.00 psig

Start Date: 2016.11.01

End Date:

2016.11.01

Last Calib.: 2016.11.01

Start Time: 13:58:05

End Time:

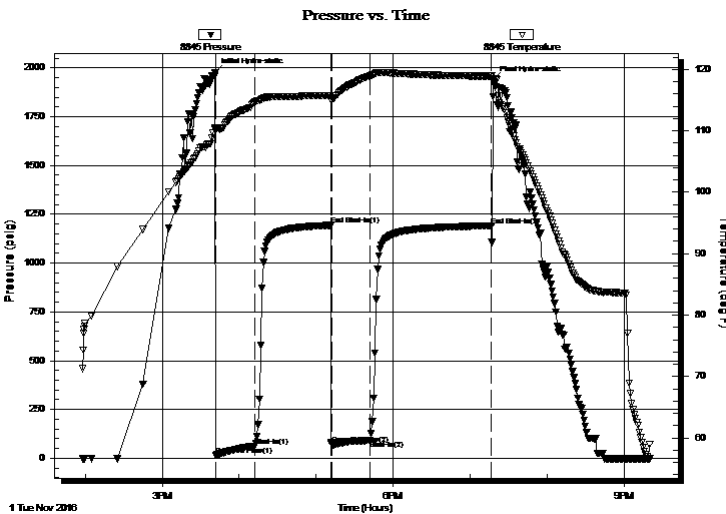
21:20:14

Time On Btm: 2016.11.01 @ 15:41:15

Time Off Btm: 2016.11.01 @ 19:18:00

**TEST COMMENT:** 30- IF: 5" blow.  
60- IS: No return.  
30- FF: 5" blow.  
90- FS: 1/4" return, died @ 25 min.

## PRESSURE SUMMARY



Time (Min.)	Pressure (psig)	Temp (deg F)	Annotation
0	1977.01	110.41	Initial Hydro-static
1	16.01	110.06	Open To Flow (1)
31	62.46	114.67	Shut-In(1)
91	1193.83	115.71	End Shut-In(1)
91	70.50	115.35	Open To Flow (2)
121	91.91	118.93	Shut-In(2)
216	1191.35	118.90	End Shut-In(2)
217	1937.66	118.28	Final Hydro-static

## Recovery

Length (ft)	Description	Volume (bbl)
170.00	gmco 25g 30m 45o	0.84
40.00	go 20g 80o	0.41
0.00	100' GIP	0.00

\* Recovery from multiple tests

## Gas Rates

Choke (inches)	Pressure (psig)	Gas Rate (Mcf/d)



**TRILOBITE TESTING, INC**

# DRILL STEM TEST REPORT

Suemaaur Explormation & Production, LLC

**26 6s 28w Sheridan, Ks**

539 N Carancahua Ste 1100  
Corpus Christie, Tx 78401

**Spressor 2-26**

Job Ticket: 63460

**DST#: 4**

ATTN: Bob Peterson

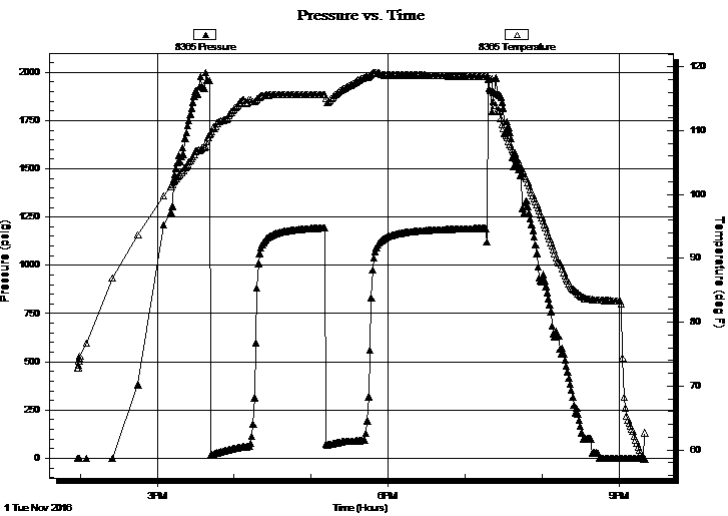
Test Start: 2016.11.01 @ 13:58:00

## GENERAL INFORMATION:

Formation: **LKC - G**  
 Deviated: No Whipstock: ft (KB)  
 Time Tool Opened: 15:41:45  
 Time Test Ended: 21:20:15  
 Interval: **3907.00 ft (KB) To 3922.00 ft (KB) (TVD)**  
 Total Depth: 3922.00 ft (KB) (TVD)  
 Hole Diameter: 7.88 inches Hole Condition: Good  
 Test Type: Conventional Bottom Hole (Reset)  
 Tester: Bradley Walter  
 Unit No: 78  
 Reference Elevations: 2683.00 ft (KB)  
 2678.00 ft (CF)  
 KB to GR/CF: 5.00 ft

**Serial #: 8365** Inside  
 Press@RunDepth: psig @ 3908.00 ft (KB) Capacity: 8000.00 psig  
 Start Date: 2016.11.01 End Date: 2016.11.01 Last Calib.: 2016.11.01  
 Start Time: 13:58:05 End Time: 21:20:14 Time On Btm:  
 Time Off Btm:

TEST COMMENT: 30- IF: 5" blow.  
 60- IS: No return.  
 30- FF: 5" blow.  
 90- FS: 1/4" return, died @ 25 min.



## PRESSURE SUMMARY

Time (Min.)	Pressure (psig)	Temp (deg F)	Annotation

## Recovery

Length (ft)	Description	Volume (bbl)
170.00	gmco 25g 30m 45o	0.84
40.00	go 20g 80o	0.41
0.00	100' GIP	0.00

\* Recovery from multiple tests

## Gas Rates

Choke (inches)	Pressure (psig)	Gas Rate (Mcf/d)



**TRILOBITE  
TESTING, INC**

# DRILL STEM TEST REPORT

**FLUID SUMMARY**

Suemaaur Explormation & Production, LLC

**26 6s 28w Sheridan, Ks**

539 N Carancahua Ste 1100  
Corpus Christie, Tx 78401

**Spressor 2-26**

Job Ticket: 63460

**DST#: 4**

ATTN: Bob Peterson

Test Start: 2016.11.01 @ 13:58:00

## Mud and Cushion Information

Mud Type: Gel Chem

Cushion Type:

Oil API:

34 deg API

Mud Weight: 9.00 lb/gal

Cushion Length:

ft

Water Salinity:

0 ppm

Viscosity: 55.00 sec/qt

Cushion Volume:

bbbl

Water Loss: 6.40 in<sup>3</sup>

Gas Cushion Type:

Resistivity: ohm.m

Gas Cushion Pressure:

psig

Salinity: 1100.00 ppm

Filter Cake: 2.00 inches

## Recovery Information

Recovery Table

Length ft	Description	Volume bbbl
170.00	gmco 25g 30m 45o	0.836
40.00	go 20g 80o	0.406
0.00	100' GIP	0.000

Total Length: 210.00 ft      Total Volume: 1.242 bbl

Num Fluid Samples: 0

Num Gas Bombs: 0

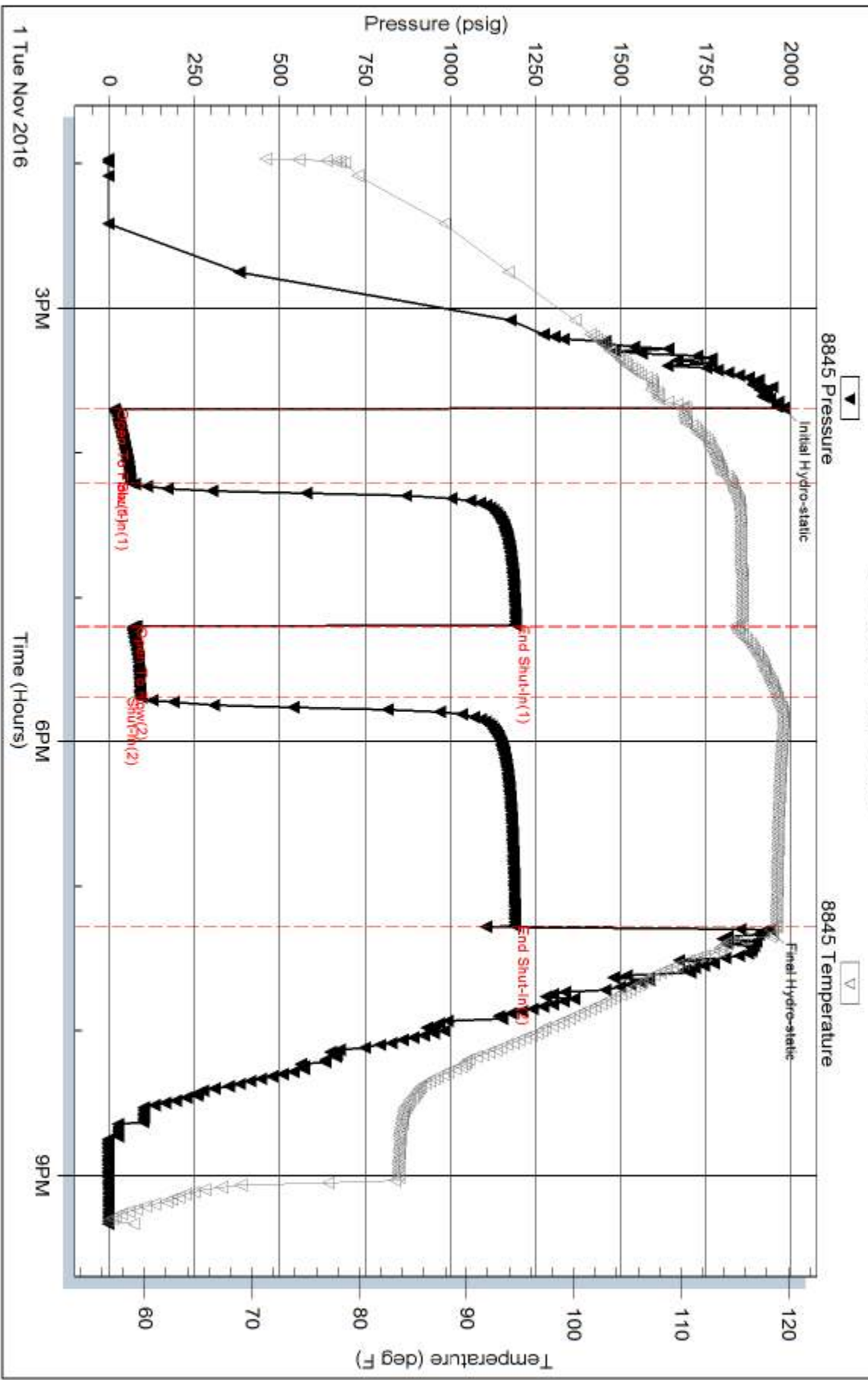
Serial #:

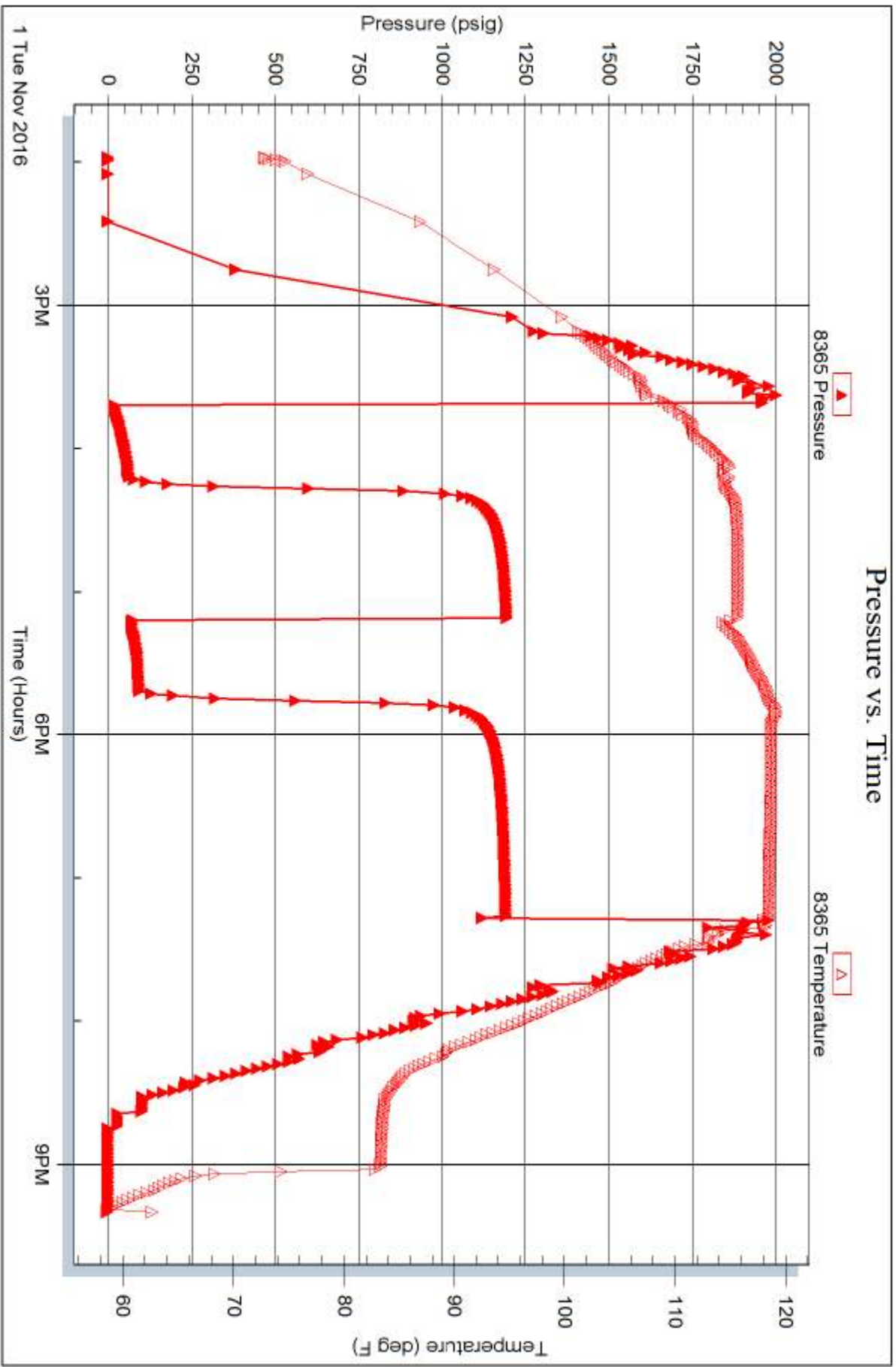
Laboratory Name:

Laboratory Location:

Recovery Comments:

### Pressure vs. Time







**TRILOBITE  
TESTING, INC**

# DRILL STEM TEST REPORT

Suemaur Explormation & Production, LLC

**26 6s 28w Sheridan, Ks**

539 N Carancahua Ste 1100  
Corpus Christie, Tx 78401

**Spressor 2-26**

Job Ticket: 63461

**DST#: 5**

ATTN: Bob Peterson

Test Start: 2016.11.02 @ 03:37:00

## GENERAL INFORMATION:

Formation: **LKC - Lower G**

Deviated: No Whipstock: ft (KB)

Time Tool Opened: 05:49:15

Time Test Ended: 10:55:30

Test Type: Conventional Bottom Hole (Reset)

Tester: Bradley Walter

Unit No: 78

**Interval: 3923.00 ft (KB) To 3940.00 ft (KB) (TVD)**

Total Depth: 3940.00 ft (KB) (TVD)

Hole Diameter: 7.88 inches Hole Condition: Good

Reference Elevations: 2683.00 ft (KB)

2678.00 ft (CF)

KB to GR/CF: 5.00 ft

**Serial #: 8845 Outside**

Press@RunDepth: 483.74 psig @ 3924.00 ft (KB)

Start Date: 2016.11.02

End Date:

2016.11.02

Start Time: 03:37:05

End Time:

10:55:29

Capacity: 8000.00 psig

Last Calib.: 2016.11.02

Time On Btm: 2016.11.02 @ 05:48:30

Time Off Btm: 2016.11.02 @ 07:43:00

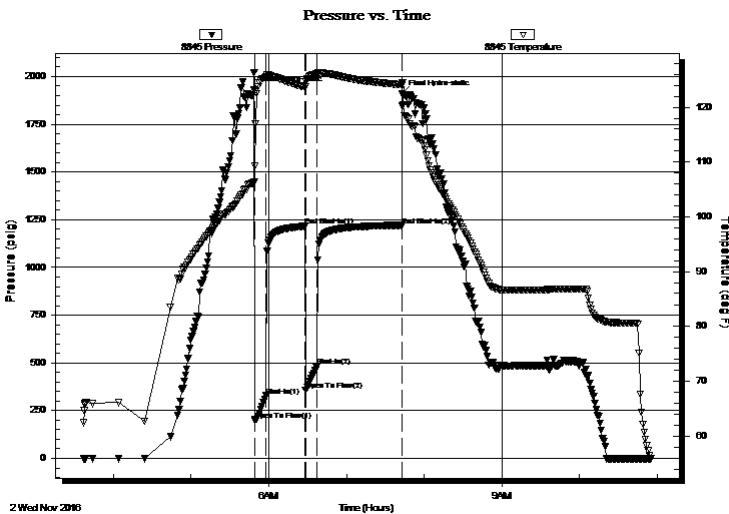
TEST COMMENT: 10- IF: BOB @ 45 sec.

30- IS: 1/2" return.

10- FF:BOB 1 min.

60- FS: 5" return.

## PRESSURE SUMMARY



Time (Min.)	Pressure (psig)	Temp (deg F)	Annotation
0	1928.85	106.16	Initial Hydro-static
1	200.88	109.20	Open To Flow (1)
10	327.61	125.52	Shut-In(1)
40	1215.56	123.68	End Shut-In(1)
40	355.41	123.72	Open To Flow (2)
49	483.74	126.06	Shut-In(2)
114	1220.54	124.07	End Shut-In(2)
115	1907.58	123.99	Final Hydro-static

## Recovery

Length (ft)	Description	Volume (bbl)
210.00	smcw 2m 98w w/oil spots	1.24
350.00	ocw 30o 70w	4.91
440.00	go 25g 75o	6.17
0.00	590' GIP	0.00

## Gas Rates

	Choke (inches)	Pressure (psig)	Gas Rate (Mcf/d)

\* Recovery from multiple tests



**TRILOBITE TESTING, INC**

# DRILL STEM TEST REPORT

Suemaur Explorment & Production, LLC

**26 6s 28w Sheridan, Ks**

539 N Carancahua Ste 1100  
Corpus Christie, Tx 78401

**Spressor 2-26**

Job Ticket: 63461

**DST#: 5**

ATTN: Bob Peterson

Test Start: 2016.11.02 @ 03:37:00

## GENERAL INFORMATION:

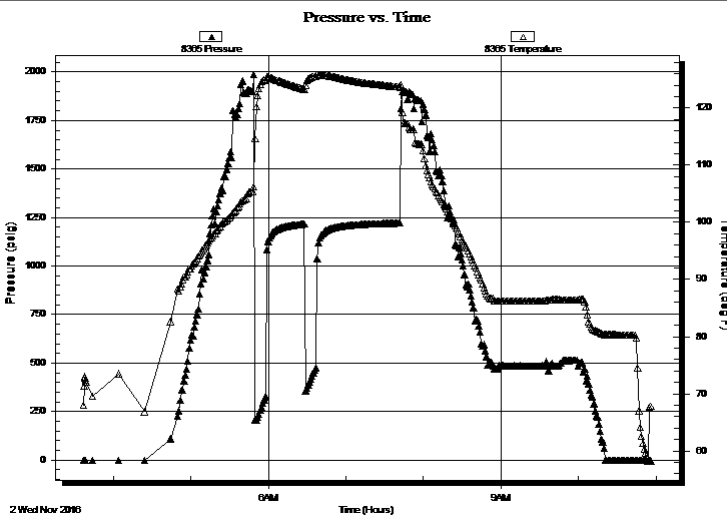
Formation: **LKC - Lower G**  
 Deviated: No Whipstock: ft (KB)  
 Time Tool Opened: 05:49:15  
 Time Test Ended: 10:55:30  
 Interval: **3923.00 ft (KB) To 3940.00 ft (KB) (TVD)**  
 Total Depth: 3940.00 ft (KB) (TVD)  
 Hole Diameter: 7.88 inches Hole Condition: Good  
 Test Type: Conventional Bottom Hole (Reset)  
 Tester: Bradley Walter  
 Unit No: 78  
 Reference Elevations: 2683.00 ft (KB)  
 2678.00 ft (CF)  
 KB to GR/CF: 5.00 ft

**Serial #: 8365**

**Inside**

Press@RunDepth: psig @ 3924.00 ft (KB) Capacity: 8000.00 psig  
 Start Date: 2016.11.02 End Date: 2016.11.02 Last Calib.: 2016.11.02  
 Start Time: 03:37:05 End Time: 10:55:44 Time On Btm:  
 Time Off Btm:

TEST COMMENT: 10- IF: BOB @ 45 sec.  
 30- IS: 1/2" return.  
 10- FF: BOB 1 min.  
 60- FS: 5" return.



## PRESSURE SUMMARY

Time (Min.)	Pressure (psig)	Temp (deg F)	Annotation

## Recovery

Length (ft)	Description	Volume (bbl)
210.00	smcw 2m 98w w/oil spots	1.24
350.00	ocw 30o 70w	4.91
440.00	go 25g 75o	6.17
0.00	590' GIP	0.00

## Gas Rates

Choke (inches)	Pressure (psig)	Gas Rate (Mcf/d)

\* Recovery from multiple tests





**TRILOBITE  
TESTING, INC**

# DRILL STEM TEST REPORT

**TOOL DIAGRAM**

Suemaour Explormation & Production, LLC

**26 6s 28w Sheridan, Ks**

539 N Carancahua Ste 1100  
Corpus Christie, Tx 78401

**Spressor 2-26**

Job Ticket: 63461

**DST#: 5**

ATTN: Bob Peterson

Test Start: 2016.11.02 @ 03:37:00

## Tool Information

Drill Pipe:	Length: 3737.00 ft	Diameter: 3.80 inches	Volume: 52.42 bbl	Tool Weight: 2500.00 lb
Heavy Wt. Pipe:	Length: 0.00 ft	Diameter: inches	Volume: 0.00 bbl	Weight set on Packer: 25000.00 lb
Drill Collar:	Length: 187.00 ft	Diameter: 2.25 inches	Volume: 0.92 bbl	Weight to Pull Loose: 70000.00 lb
			<u>Total Volume: 53.34 bbl</u>	Tool Chased 0.00 ft
Drill Pipe Above KB:	28.00 ft			String Weight: Initial 51000.00 lb
Depth to Top Packer:	3923.00 ft			Final 53000.00 lb
Depth to Bottom Packer:	ft			
Interval between Packers:	17.00 ft			
Tool Length:	44.00 ft			
Number of Packers:	2	Diameter: 6.75 inches		

Tool Comments:

## Tool Description

Tool Description	Length (ft)	Serial No.	Position	Depth (ft)	Accum. Lengths
Change Over Sub	1.00			3897.00	
Shut In Tool	5.00			3902.00	
Hydraulic tool	5.00			3907.00	
Jars	5.00			3912.00	
Safety Joint	2.00			3914.00	
Packer	5.00			3919.00	27.00 Bottom Of Top Packer
Packer	4.00			3923.00	
Stubb	1.00			3924.00	
Recorder	0.00	8365	Inside	3924.00	
Recorder	0.00	8845	Outside	3924.00	
Perforations	13.00			3937.00	
Bullnose	3.00			3940.00	17.00 Bottom Packers & Anchor

**Total Tool Length: 44.00**



**TRILOBITE  
TESTING, INC**

# DRILL STEM TEST REPORT

**FLUID SUMMARY**

Suemaour Explormation & Production, LLC

**26 6s 28w Sheridan, Ks**

539 N Carancahua Ste 1100  
Corpus Christie, Tx 78401

**Spressor 2-26**

Job Ticket: 63461

**DST#: 5**

ATTN: Bob Peterson

Test Start: 2016.11.02 @ 03:37:00

## Mud and Cushion Information

Mud Type: Gel Chem

Cushion Type:

Oil API:

35 deg API

Mud Weight: 9.00 lb/gal

Cushion Length:

ft

Water Salinity:

65000 ppm

Viscosity: 57.00 sec/qt

Cushion Volume:

bbbl

Water Loss: 6.00 in<sup>3</sup>

Gas Cushion Type:

Resistivity: ohm.m

Gas Cushion Pressure:

psig

Salinity: 1000.00 ppm

Filter Cake: 2.00 inches

## Recovery Information

Recovery Table

Length ft	Description	Volume bbbl
210.00	smcw 2m 98w w/oil spots	1.242
350.00	ocw 30o 70w	4.910
440.00	go 25g 75o	6.172
0.00	590' GIP	0.000

Total Length: 1000.00 ft      Total Volume: 12.324 bbl

Num Fluid Samples: 0

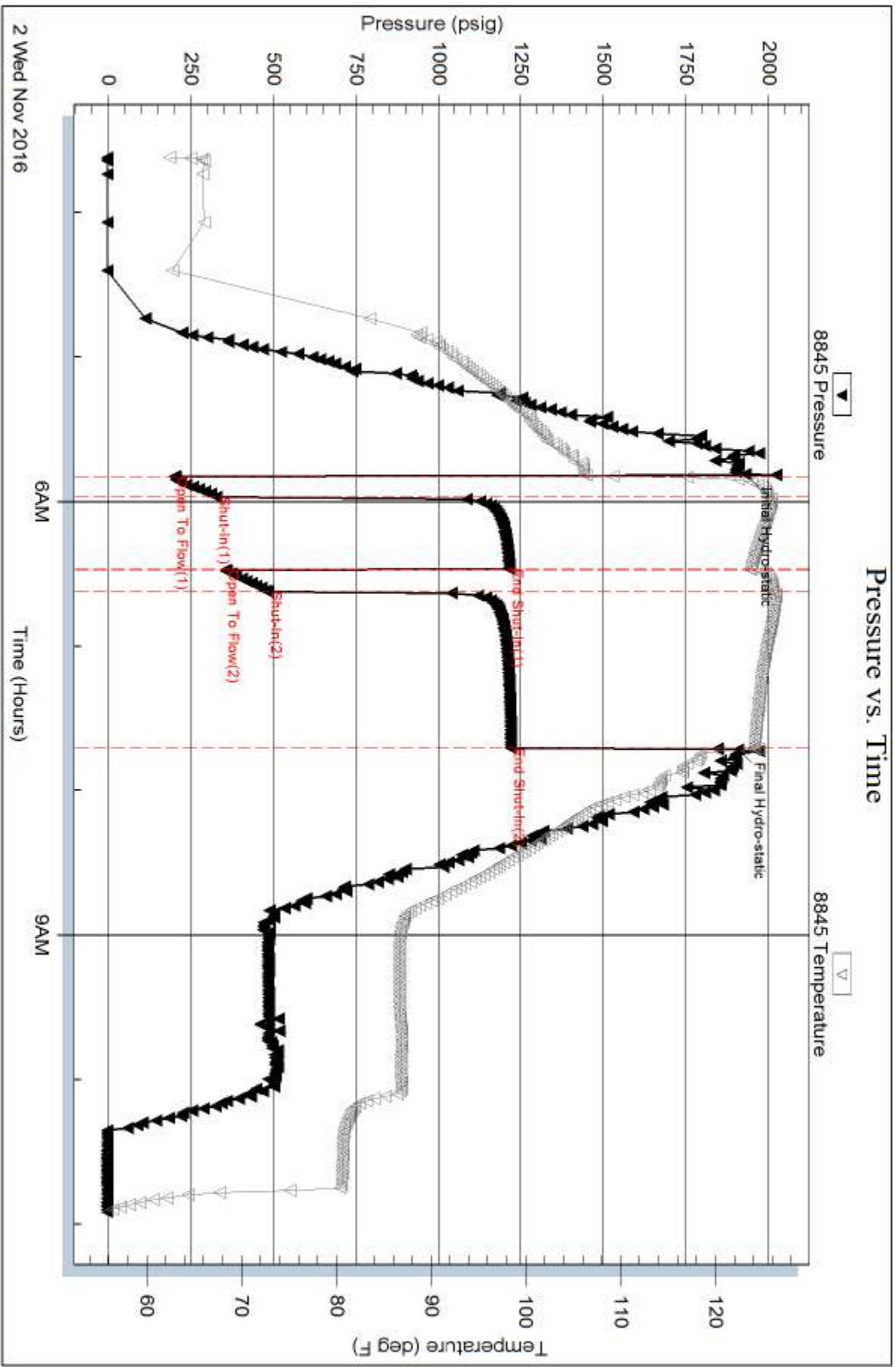
Num Gas Bombs: 0

Serial #:

Laboratory Name:

Laboratory Location:

Recovery Comments: rw is .145 @ 58F = 65000ppm



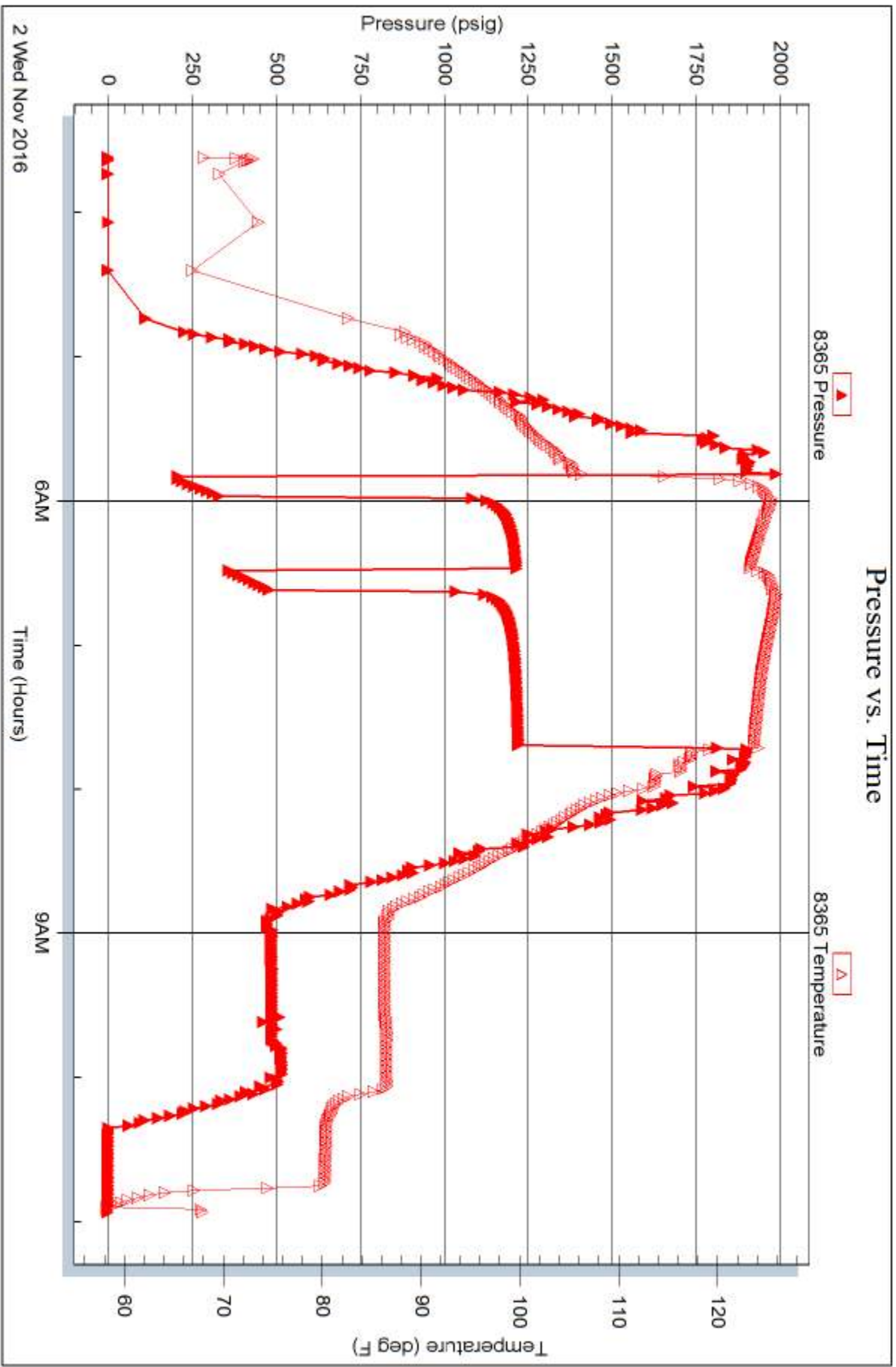
Serial #: 8365

Inside

Suenaux Exploration & Production, LLC

Spressor 2-26

DST Test Number: 5



Trilobite Testing, Inc

Ref. No: 63461

Printed: 2016.11.02 @ 11:29:43



**TRILOBITE TESTING, INC**

# DRILL STEM TEST REPORT

Suemaur Explormation & Production, LLC

**26 6s 28w Sheridan, Ks**

539 N Carancahua Ste 1100  
Corpus Christie, Tx 78401

**Spressor 2-26**

Job Ticket: 63462

**DST#: 6**

ATTN: Bob Peterson

Test Start: 2016.11.02 @ 19:27:00

## GENERAL INFORMATION:

Formation: **LKC H-J**

Deviated: No Whipstock: ft (KB)

Time Tool Opened: 21:17:30

Time Test Ended: 23:19:45

Test Type: Conventional Bottom Hole (Reset)

Tester: Bradley Walter

Unit No: 78

**Interval: 3954.00 ft (KB) To 3998.00 ft (KB) (TVD)**

Reference Elevations: 2683.00 ft (KB)

Total Depth: 3998.00 ft (KB) (TVD)

2678.00 ft (CF)

Hole Diameter: 7.88 inches Hole Condition: Good

KB to GR/CF: 5.00 ft

**Serial #: 8365 Inside**

Press@RunDepth: psig @ 3955.00 ft (KB)

Capacity: 8000.00 psig

Start Date: 2016.11.02

End Date: 2016.11.02

Last Calib.: 2016.11.03

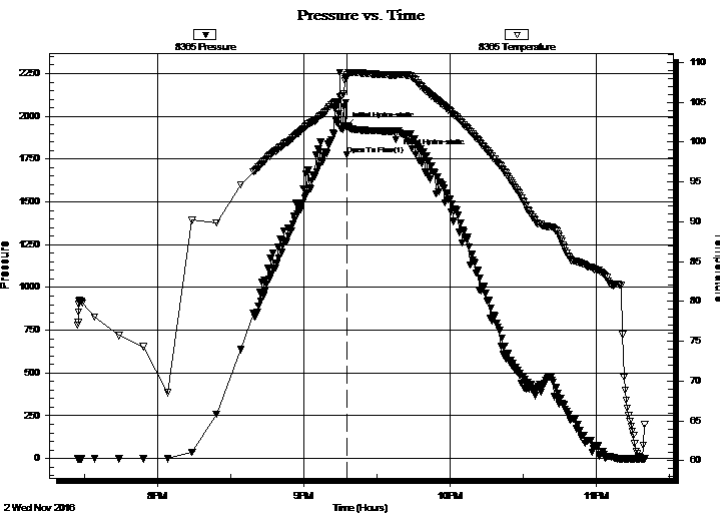
Start Time: 19:27:05

End Time: 23:19:45

Time On Btm: 2016.11.02 @ 21:17:00

Time Off Btm: 2016.11.02 @ 21:38:15

TEST COMMENT: Miss-Run hit bridge 40' from bottom pulled test to recondition hole.



## PRESSURE SUMMARY

Time (Min.)	Pressure (psig)	Temp (deg F)	Annotation
0	1940.67	107.93	Initial Hydro-static
1	1777.41	108.08	Open To Flow (1)
22	1917.77	108.43	Final Hydro-static

## Recovery

Length (ft)	Description	Volume (bbl)
0.00	did not make it to the bottom	0.00

\* Recovery from multiple tests

## Gas Rates

Choke (inches)	Pressure (psig)	Gas Rate (Mcf/d)



**TRILOBITE  
TESTING, INC**

# DRILL STEM TEST REPORT

**TOOL DIAGRAM**

Suemaour Explormation & Production, LLC

**26 6s 28w Sheridan, Ks**

539 N Carancahua Ste 1100  
Corpus Christie, Tx 78401

**Spressor 2-26**

Job Ticket: 63462

**DST#: 6**

ATTN: Bob Peterson

Test Start: 2016.11.02 @ 19:27:00

## Tool Information

Drill Pipe:	Length: 3767.00 ft	Diameter: 3.80 inches	Volume: 52.84 bbl	Tool Weight: 2500.00 lb
Heavy Wt. Pipe:	Length: 0.00 ft	Diameter: inches	Volume: 0.00 bbl	Weight set on Packer: 30000.00 lb
Drill Collar:	Length: 187.00 ft	Diameter: 2.25 inches	Volume: 0.92 bbl	Weight to Pull Loose: 51000.00 lb
			<u>Total Volume: 53.76 bbl</u>	Tool Chased 0.00 ft
Drill Pipe Above KB:	27.00 ft			String Weight: Initial 51000.00 lb
Depth to Top Packer:	3954.00 ft			Final 51000.00 lb
Depth to Bottom Packer:	ft			
Interval betw een Packers:	44.00 ft			
Tool Length:	71.00 ft			
Number of Packers:	2	Diameter: 6.75 inches		

Tool Comments:

## Tool Description

Tool Description	Length (ft)	Serial No.	Position	Depth (ft)	Accum. Lengths
Change Over Sub	1.00			3928.00	
Shut In Tool	5.00			3933.00	
Hydraulic tool	5.00			3938.00	
Jars	5.00			3943.00	
Safety Joint	2.00			3945.00	
Packer	5.00			3950.00	27.00 Bottom Of Top Packer
Packer	4.00			3954.00	
Stubb	1.00			3955.00	
Recorder	0.00	8365	Inside	3955.00	
Recorder	0.00	8845	Outside	3955.00	
Perforations	7.00			3962.00	
Change Over Sub	1.00			3963.00	
Drill Pipe	31.00			3994.00	
Change Over Sub	1.00			3995.00	
Bullnose	3.00			3998.00	44.00 Bottom Packers & Anchor

**Total Tool Length: 71.00**



**TRILOBITE  
TESTING, INC**

# DRILL STEM TEST REPORT

## FLUID SUMMARY

Suemaer Explormation & Production, LLC

**26 6s 28w Sheridan, Ks**

539 N Carancahua Ste 1100  
Corpus Christie, Tx 78401

**Spressor 2-26**

Job Ticket: 63462

**DST#: 6**

ATTN: Bob Peterson

Test Start: 2016.11.02 @ 19:27:00

### Mud and Cushion Information

Mud Type: Gel Chem

Mud Weight: 9.00 lb/gal

Viscosity: 65.00 sec/qt

Water Loss: 5.60 in<sup>3</sup>

Resistivity: ohm.m

Salinity: 800.00 ppm

Filter Cake: 2.00 inches

Cushion Type:

Cushion Length: ft

Cushion Volume: bbl

Gas Cushion Type:

Gas Cushion Pressure: psig

Oil API:

Water Salinity: deg API

ppm

### Recovery Information

Recovery Table

Length ft	Description	Volume bbl
0.00	did not make it to the bottom	0.000

Total Length: ft Total Volume: bbl

Num Fluid Samples: 0

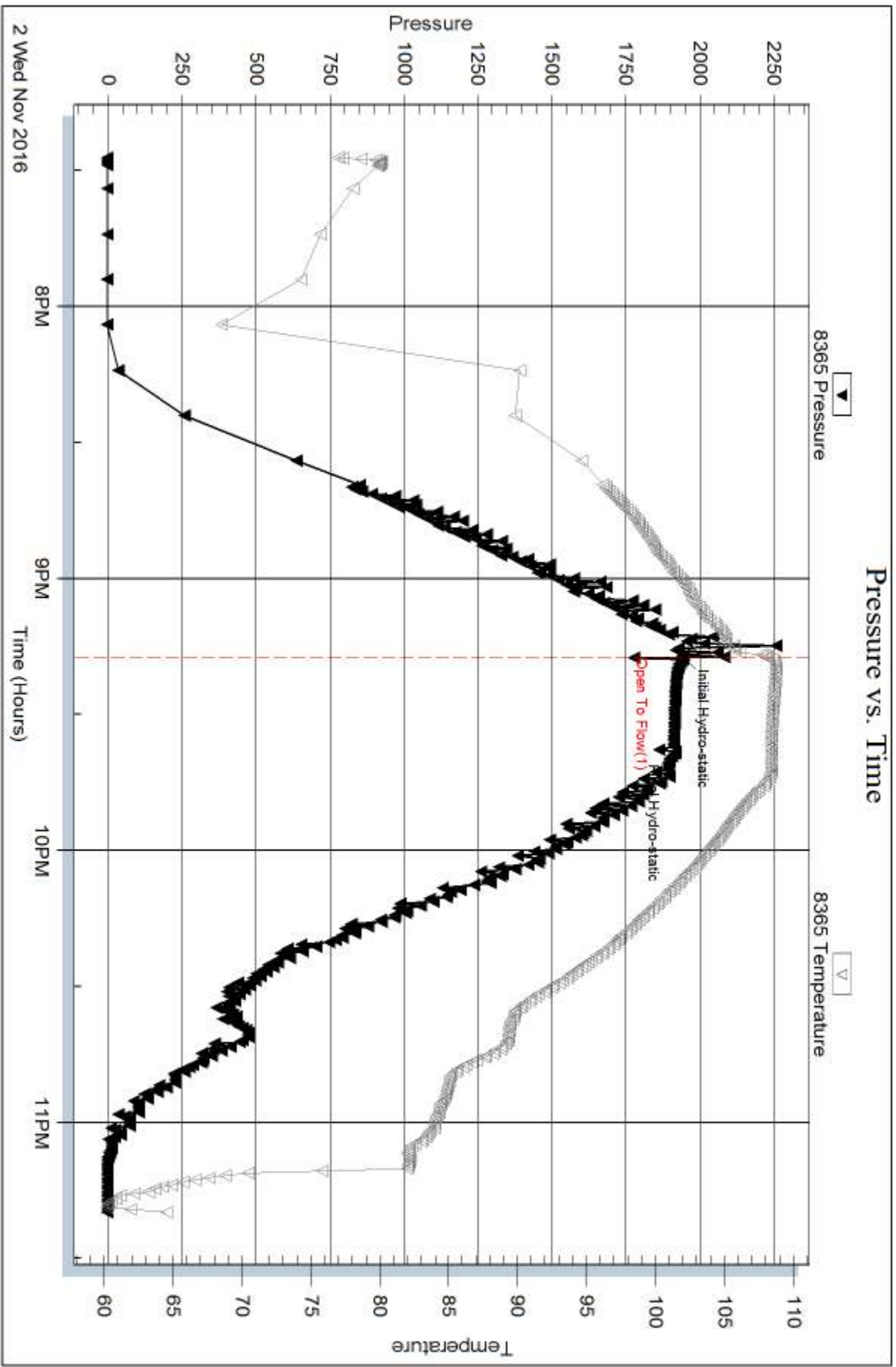
Num Gas Bombs: 0

Serial #:

Laboratory Name:

Laboratory Location:

Recovery Comments:







**TRILOBITE  
TESTING, INC**

# DRILL STEM TEST REPORT

Suemaur Explormation & Production, LLC

**26 6s 28w Sheridan, Ks**

539 N Carancahua Ste 1100  
Corpus Christie, Tx 78401

**Spressor 2-26**

Job Ticket: 63464

**DST#: 7**

ATTN: Bob Peterson

Test Start: 2016.11.03 @ 03:54:00

## GENERAL INFORMATION:

Formation: **LKC H-J**

Deviated: No Whipstock: ft (KB)

Time Tool Opened: 05:59:45

Time Test Ended: 11:47:30

Test Type: Conventional Bottom Hole (Reset)

Tester: Bradley Walter

Unit No: 78

**Interval: 3954.00 ft (KB) To 3998.00 ft (KB) (TVD)**

Total Depth: 3998.00 ft (KB) (TVD)

Hole Diameter: 7.88 inches Hole Condition: Good

Reference Elevations: 2683.00 ft (KB)

2678.00 ft (CF)

KB to GR/CF: 5.00 ft

**Serial #: 8845 Outside**

Press@RunDepth: 142.61 psig @ 3955.00 ft (KB)

Start Date: 2016.11.03

End Date:

2016.11.03

Start Time: 03:54:05

End Time:

11:47:29

Capacity: 8000.00 psig

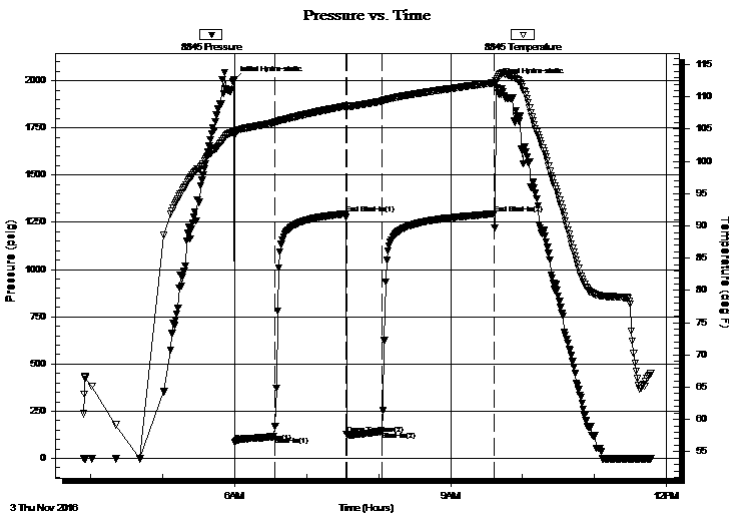
Last Calib.: 2016.11.03

Time On Btm: 2016.11.03 @ 05:59:15

Time Off Btm: 2016.11.03 @ 09:38:00

**TEST COMMENT:** 30- IF: BOB @ 30 min.  
60- IS: 2" blow , receded to surface.  
30- FF: BOB @ 21 min.  
90- FS: 3" return, died @ 45 min.

## PRESSURE SUMMARY



Time (Min.)	Pressure (psig)	Temp (deg F)	Annotation
0	2002.13	104.64	Initial Hydro-static
1	86.35	103.96	Open To Flow (1)
34	115.66	106.03	Shut-In(1)
94	1295.00	108.59	End Shut-In(1)
94	126.88	108.43	Open To Flow (2)
124	142.61	109.34	Shut-In(2)
217	1295.93	112.21	End Shut-In(2)
219	1991.63	112.58	Final Hydro-static

## Recovery

Length (ft)	Description	Volume (bbl)
130.00	gocm 25g 25o 50m	0.64
120.00	gmco 10g 30m 60o	1.16
70.00	go 15g 85o	0.98
0.00	370' GIP	0.00

## Gas Rates

	Choke (inches)	Pressure (psig)	Gas Rate (Mcf/d)

\* Recovery from multiple tests



**TRILOBITE  
TESTING, INC**

# DRILL STEM TEST REPORT

Suemaer Explormation & Production, LLC

**26 6s 28w Sheridan, Ks**

539 N Carancahua Ste 1100  
Corpus Christie, Tx 78401

**Spressor 2-26**

Job Ticket: 63464

**DST#: 7**

ATTN: Bob Peterson

Test Start: 2016.11.03 @ 03:54:00

## GENERAL INFORMATION:

Formation: **LKC H-J**

Deviated: No Whipstock: ft (KB)

Time Tool Opened: 05:59:45

Time Test Ended: 11:47:30

Test Type: Conventional Bottom Hole (Reset)

Tester: Bradley Walter

Unit No: 78

**Interval: 3954.00 ft (KB) To 3998.00 ft (KB) (TVD)**

Reference Elevations: 2683.00 ft (KB)

Total Depth: 3998.00 ft (KB) (TVD)

2678.00 ft (CF)

Hole Diameter: 7.88 inches Hole Condition: Good

KB to GR/CF: 5.00 ft

**Serial #: 8365**

**Inside**

Press@RunDepth: psig @ 3955.00 ft (KB)

Capacity: 8000.00 psig

Start Date: 2016.11.03

End Date:

2016.11.03

Last Calib.:

2016.11.03

Start Time: 03:54:05

End Time:

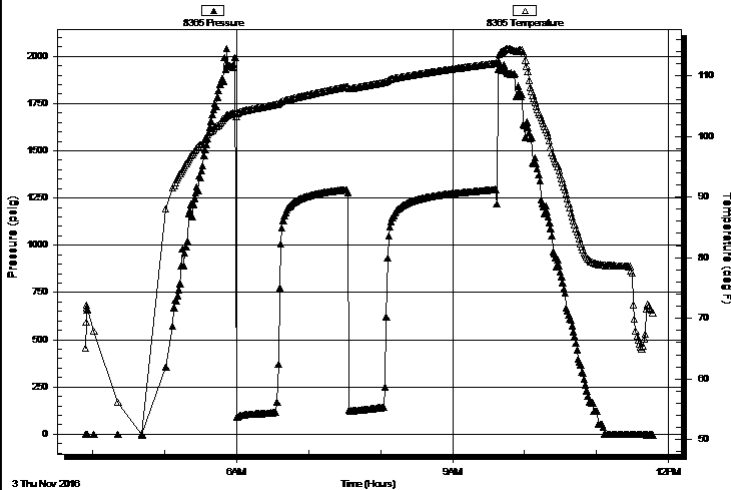
11:47:29

Time On Btm:

Time Off Btm:

**TEST COMMENT:** 30- IF: BOB @ 30 min.  
60- IS: 2" blow , receded to surface.  
30- FF: BOB @ 21 min.  
90- FS: 3" return, died @ 45 min.

Pressure vs. Time



## PRESSURE SUMMARY

Time (Min.)	Pressure (psig)	Temp (deg F)	Annotation

## Recovery

Length (ft)	Description	Volume (bbl)
130.00	gocm 25g 25o 50m	0.64
120.00	gmco 10g 30m 60o	1.16
70.00	go 15g 85o	0.98
0.00	370' GIP	0.00

## Gas Rates

Choke (inches)	Pressure (psig)	Gas Rate (Mcf/d)

\* Recovery from multiple tests



**TRILOBITE  
TESTING, INC**

# DRILL STEM TEST REPORT

**TOOL DIAGRAM**

Suemaour Explormation & Production, LLC

**26 6s 28w Sheridan, Ks**

539 N Carancahua Ste 1100  
Corpus Christie, Tx 78401

**Spressor 2-26**

Job Ticket: 63464

**DST#: 7**

ATTN: Bob Peterson

Test Start: 2016.11.03 @ 03:54:00

## Tool Information

Drill Pipe:	Length: 3767.00 ft	Diameter: 3.80 inches	Volume: 52.84 bbl	Tool Weight: 2500.00 lb
Heavy Wt. Pipe:	Length: 0.00 ft	Diameter: inches	Volume: 0.00 bbl	Weight set on Packer: 25000.00 lb
Drill Collar:	Length: 187.00 ft	Diameter: 2.25 inches	Volume: 0.92 bbl	Weight to Pull Loose: 65000.00 lb
			<u>Total Volume: 53.76 bbl</u>	Tool Chased 4.00 ft
Drill Pipe Above KB:	27.00 ft			String Weight: Initial 51000.00 lb
Depth to Top Packer:	3954.00 ft			Final 53000.00 lb
Depth to Bottom Packer:	ft			
Interval between Packers:	44.00 ft			
Tool Length:	71.00 ft			
Number of Packers:	2	Diameter: 6.75 inches		

Tool Comments:

## Tool Description

Tool Description	Length (ft)	Serial No.	Position	Depth (ft)	Accum. Lengths
Change Over Sub	1.00			3928.00	
Shut In Tool	5.00			3933.00	
Hydraulic tool	5.00			3938.00	
Jars	5.00			3943.00	
Safety Joint	2.00			3945.00	
Packer	5.00			3950.00	27.00 Bottom Of Top Packer
Packer	4.00			3954.00	
Stubb	1.00			3955.00	
Recorder	0.00	8365	Inside	3955.00	
Recorder	0.00	8845	Outside	3955.00	
Perforations	7.00			3962.00	
Change Over Sub	1.00			3963.00	
Drill Pipe	31.00			3994.00	
Change Over Sub	1.00			3995.00	
Bullnose	3.00			3998.00	44.00 Bottom Packers & Anchor

**Total Tool Length: 71.00**



**TRILOBITE  
TESTING, INC**

# DRILL STEM TEST REPORT

## FLUID SUMMARY

Suemaaur Explormation & Production, LLC

**26 6s 28w Sheridan, Ks**

539 N Carancahua Ste 1100  
Corpus Christie, Tx 78401

**Spressor 2-26**

Job Ticket: 63464

**DST#: 7**

ATTN: Bob Peterson

Test Start: 2016.11.03 @ 03:54:00

### Mud and Cushion Information

Mud Type: Gel Chem

Cushion Type:

Oil API:

35 deg API

Mud Weight: 9.00 lb/gal

Cushion Length:

ft

Water Salinity:

0 ppm

Viscosity: 60.00 sec/qt

Cushion Volume:

bbbl

Water Loss: 6.40 in<sup>3</sup>

Gas Cushion Type:

Resistivity: ohm.m

Gas Cushion Pressure:

psig

Salinity: 1400.00 ppm

Filter Cake: 2.00 inches

### Recovery Information

Recovery Table

Length ft	Description	Volume bbbl
130.00	gocm 25g 25o 50m	0.639
120.00	gmco 10g 30m 60o	1.164
70.00	go 15g 85o	0.982
0.00	370' GIP	0.000

Total Length: 320.00 ft

Total Volume: 2.785 bbl

Num Fluid Samples: 0

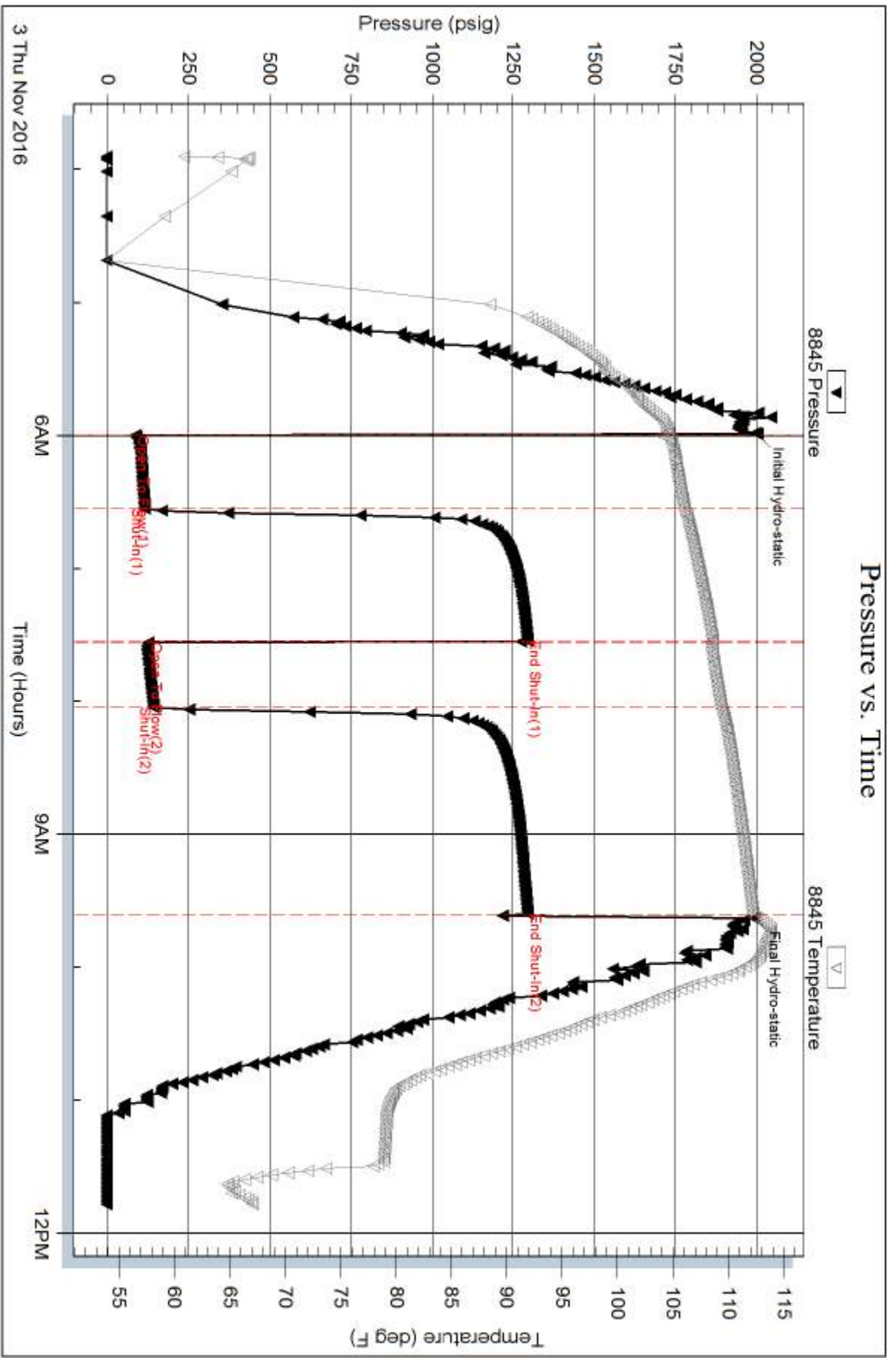
Num Gas Bombs: 0

Serial #:

Laboratory Name:

Laboratory Location:

Recovery Comments:



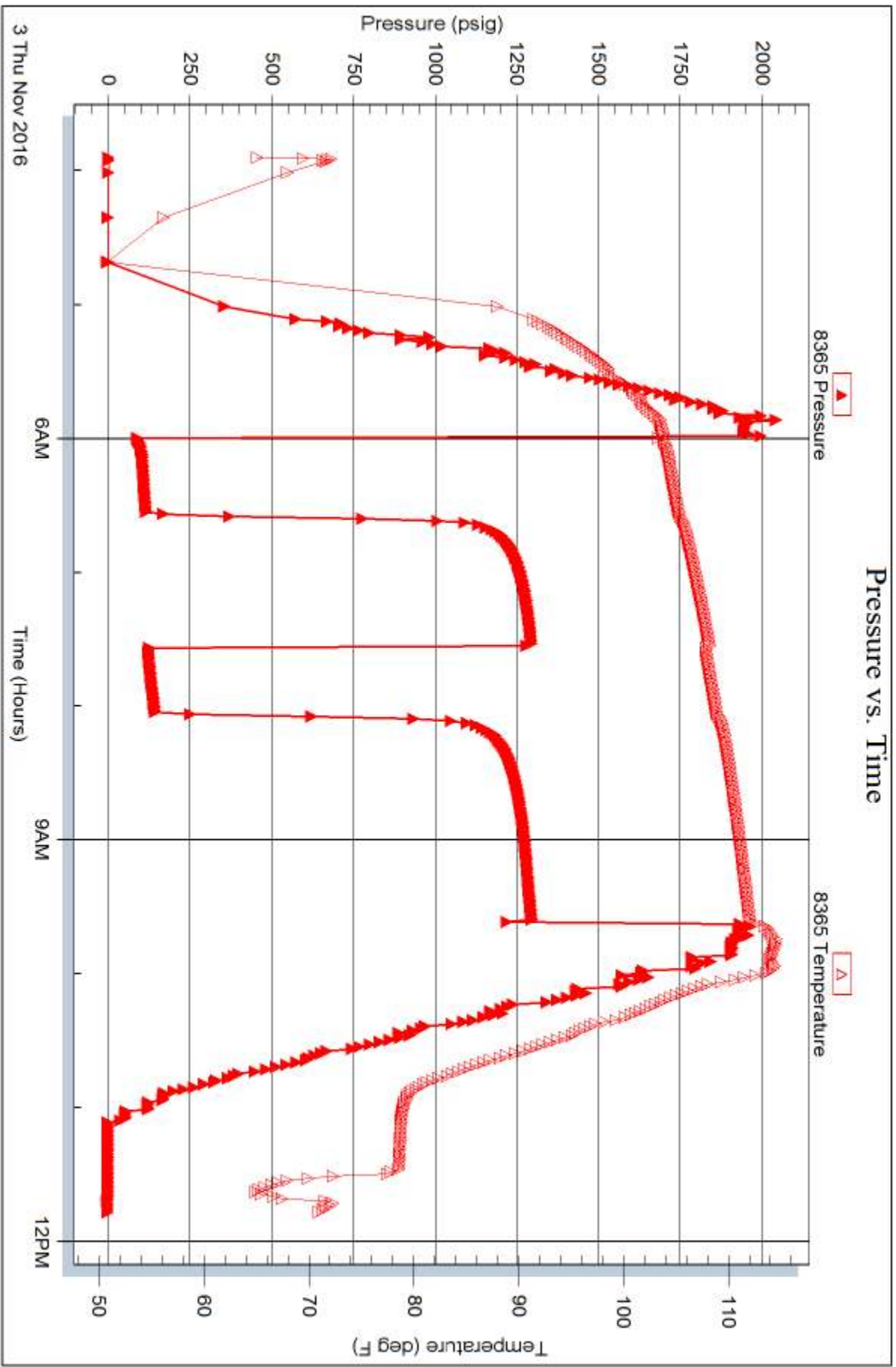
Serial #: 8365

Inside

Suenaux Exploration & Production, LLC

Spressor 2-26

DST Test Number: 7



Tribble Testing, Inc

Ref. No: 63464

Printed: 2016.11.03 @ 11:59:50