

GEOLOGIST'S REPORT

DRILLING TIME AND SAMPLE LOG

SUEMAUR EXPLORATION & PROD., LLC

**SPRESSER #2-26
SEC. 26 NW 6S RGE 28W
NE 9E NW SW
1897' FSL & 1137' FWL**

SHERIDAN COUNTY, KANSAS

API: 15-179-21422-00-00

**DRILLING CONTR.: MURFIN RIG #7
SPUD: 10-27-2016 COMP: 11-05-16
MUD UP: 3050' TYPE MUD: CHEM.
DRILL TIME: 3300' to RTD
RTD: 4400' LTD: 4400'
SAMPLES SAVED: 3350' to RTD
GEOLOGIST: ROBERT J. PETERSEN**

ELEVATION

**KB: 2681
GL: 2676
LOG MEASURED
FROM: KB
Surface cut 2' for location**

SURFACE CASING

8 5/8" Set @290' w/ 2605X

PRODUCTION CASING

15.5# 5.5" Casing set w/155 sacks

WELL LOG SURVEYS

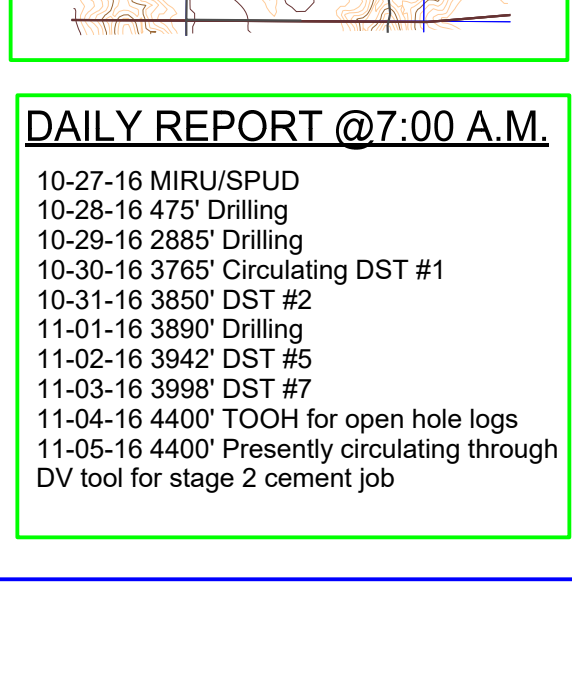
**WEATHERFORD
HI-Res AIL-DNL-ML-GR-SP**

ELECTRIC LOG TOPS

FORMATION	DEPTH	DATUM	POS A	POS B
Stone Corral	2416	+265	-3	-4
Base Stone Corral	2447	+234	+1	-3
Foraker	3303	+022	-1	-1
Stoller	3472	-791	-1	-3
Howard	3550	-869	-2	-5
Topeka	3559	-918	-3	-6
Tecumseh SD	3655	-1014	-3	-4
Lecompton	3724	-1043	+2	+1
Oread	3752	-1071	+2	+1
Heebner	3794	-1113	+1	+1
Toronto	3821	-1140	+1	+2
Lansing	3835	-1154	+5	FLAT
C Zone	3866	-1185	+3	+2
D Zone	3873	-1192	+4	+3
E/F Zone	3892	-1211	+5	+3
G Zone	3916	-1235	+4	+3
Lower G zone	3931	-1250	+2	+2
Muncie Cr. Shale	3942	-1261	+2	+4
Stark	4000	-1319	-4	FLAT
BKC	4046	-1365	-1	-1
Pawnee	4148	-1467	-9*	-8
Cherokee LS	4244	-1563	N/A	-3
Miss	4348	-1667	N/A	+23
RTD/LTD	4404	-1723	N/A	+20

* Pawnee sample top on Shawn Spresser Trust 1-26

LOCATION MAP



REFERENCE WELL A:

API 15-179-21419-00-00
Suemaur Exploration & Prod. Co
Shawn Spresser Trust #1-26
578' FSL & 1837' FWL
26-6-28W
Sheridan County, KS

REFERENCE WELL B:

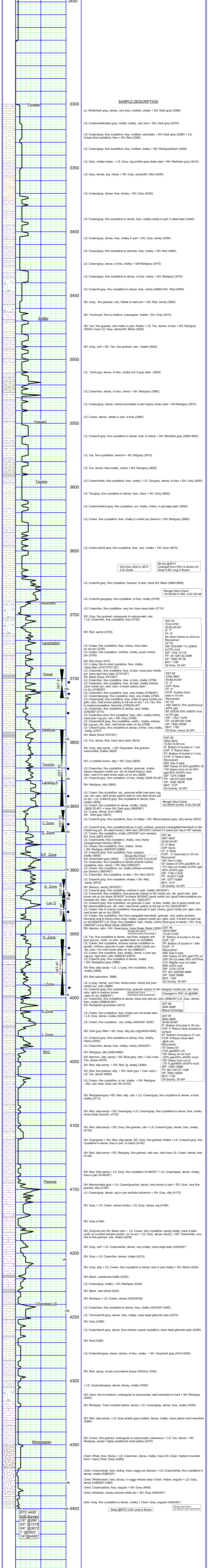
API 15-179-21414-00-00
Suemaur Exploration & Prod. Co
Schroeder #1
365' FSL & 2261' FEL
26-6-28W
Sheridan County, KS

DAILY REPORT @7:00 A.M.

10-27-16 MIRU/SPUD
10-28-16 475' Drilling
10-29-16 2885' Drilling
10-30-16 3765' Circulating DST #1
10-31-16 3850' DST #2
11-01-16 3890' Drilling
11-02-16 3942' DST #5
11-03-16 3998' DST #7
11-04-16 4400' TOOH for open hole logs
11-05-16 4400' Presently circulating through DV tool for stage 2 cement job

REMARKS AND RECOMMENDATIONS

The operator ran production casing to further test this well for commercial production.



SAMPLE DESCRIPTION

LS; White/dark gray, dense, very foss, mottled, chalky + SH; Dark gray (3360)

LS; Cream/white/dark gray, mottled, chalky, very foss + SH; Dark gray (3370)

LS; Cream/gray, fine crystalline, foss, mottled, subchalky + SH; Dark gray (3380) + LS; Cream, fine crystalline, foss + SH; Red (3390)

LS; Cream/gray, fine crystalline, foss, mottled, chalky + SH; Red/gray/black (3400)

LS; Gray, chalky-mealy + LS; Gray, arg w/dark gray shale clast + SH; Red/dark gray (3410)

LS; Gray, dense, arg, cherty + SH; Gray, sandy/SH; Red (3420)

LS; Cream/gray, dense, foss, blocky + SH; Gray (3430)

LS; Cream/gray, fine crystalline to dense, foss, chalky-mealy in part, tr dead stain (3440)

LS; Cream/gray, dense, foss, chalky in part + SH; Gray, sandy (3450)

LS; Cream/gray, fine crystalline to dense, foss, chalky + SH; Red (3460)

LS; Cream/gray, dense, sil foss, chalky + SH; Red/gray (3470)

LS; Cream/gray, fine crystalline to dense, sil foss, cherty + SH; Red/gray (3470)

LS; Cream/lt gray, fine crystalline to dense, foss, cherty (3480)+SH; Red (3490)

SD; Gray, fine grained, calc, friable to well-cem + SH; Red, sandy (3500)

SD; Tan/brown, fine to medium, subangular, friable + SH; Gray (3510)

SD; Tan, fine grained, calc-matrix in part, friable + LS; Tan, dense, sil foss + SH; Red/gray (3520)+ trace LS; Gray, dense/SH; Black (3530)

SH; Gray, soft + SD; Tan, fine grained, calc, friable (3540)

LS; Tan/lt gray, dense, sil foss, chalky w/lt gray stain (3550)

LS; Cream/tan, dense, sil foss, cherty + SH; Red/gray (3560)

LS; Cream/gray, dense, cherty-brecciated in part w/gray shale clast + SH; Red/gray (3570)

LS; Cream, dense, chalky in part, sil foss (3580)

LS; Cream/lt gray, fine crystalline to dense, foss, sil cherty + SH; Red/dark gray (3590-3600)

LS; Tan, fine crystalline, foss/ool + SH; Rd/gray (3610)

LS; Tan, dense, foss, chalky, cherty + SH; Red/gray (3620)

LS; Cream/white, fine crystalline, foss, chalky + LS; Tan/gray, dense, sil foss + SH; Gray (3630)

LS; Tan/gray, fine crystalline to dense, foss, cherty + SH; Gray (3640)

LS; Cream/white/lt gray, fine crystalline, ool, chalky, cherty, tr ppt edge stain (3650)

LS; Cream, fine crystalline, foss, chalky tr moldic por (barren) + SH; Red/gray (3660)

LS; Cream/tan/lt gray, fine crystalline, foss, very chalky + SH; Gray (3670)

Drill time 3300 to 3672
2.5x Scale

Bl tip @3672
Chan; Brown PDC to Button bit
Strap 0.68 Long to Board

Morgan Mud Check
Vis 65/Wt 8.7/WL 5.6/LCM 5#

DST #1
3743-3765
30-60-45-60"
FF: 9"
No return blows on shut-ins
Recovered:
20' Oil
355' SOCMW 1% oil/89%
w/10% mud
SIP: 1075-1066#
FP: 30-128/132-208#
HP: 1908-1817#
BHT: 118F
Oil Grav: 33 API

DST #2
3790-3850"
45-60-45-90"
IF: 3"
ICP: None
FF: 6"
FCIP: Surface blow
died in 10 min.
Recovered:
40' Oil
160' GCMC 75% oil/25% mud
w/5% gas
60' GOCM 35% oil/60% mud
w/ 5% gas
SIP: 1152-1157#
FP: 34-98/109-124#
HP: 1900-1855#
BHT: 116F
Oil Grav: minus 20 API

DST #3
3853-3870"
15-60-15-90 min.
IF: Bottom of bucket in 1 min.
ICIP: 3" Return blow
FF: Bottom of bucket in 3 min.
FCIP: 4" Return blow
Recovered:
620' Gas in pipe
680' Gassy oil 20% gas/80% oil
120' Gassy mud cut oil 40%
gas/30% oil/30% mud
SIP: 1075-1066#
FP: 146-221/245-342#
HP: 1938-1897#
BHT: 121F
Oil Gravity: 34 API

Morgan Mud Check
Vis 58/Wt 9.0/WL 6.0/LCM 5#

DST #4
3907-3922"
30-60-30-90"
IF: 5' Blow
ICP: Non
FF: 5" Blow
FCIP: 1/2" blow-died in 25 min.
Recovered:
100' Gas in pipe
40' Gassy oil 20% gas/80% oil
170' Gas cut muddy oil 25% gas
145% oil/30% gas
SIP: 1194-1194#
FP: 16-62/71-92#
HP: 1977-1938#
BHT: 121F
Oil Gravity: 34 API

DST #5
3923-3940"
10-30-10-60"
IF: Bottom of bucket in 45 sec
ICIP: 1/2"
FF: Bottom of bucket in 1 Min
FCIP: 5"
Recovered:
590' Gas in pipe
440' Gassy oil 25% gas/75% oil
350' Oil cut water 30% oil/70% w/210' Slightly mud cut water
98% w/2% mud
SIP: 1216-1221#
FP: 201-328/355-484#
HP: 1920-1906#
BHT: 124F
Oil Gravity: 35 API

DST #6
3954-3998"
30-60-30-90"
IF: Bottom of bucket in 30 min.
ICIP: 2"
FF: 2" Return blow receded to surface
FCIP: # Return blow died
@45 min.
Recovered:
70' Gassy Oil
120' Gassy oil cut mud
(25% gas/25% oil/50% mud)
130' Gassy mud cut oil
(10% gas/60% oil/30% mud)
SIP: 1295-1296#
FP: 86-119/127-143#
HP: 1920-192#
BHT: 112F
Oil Gravity: 35 API

Morgan Mud Check
Vis 75/Wt 9.1/WL 5.6/LCM 4#

Strap @RTD 2.55 Long to Board

DST #7
3954-3998"
30-60-30-90"
IF: Bottom of bucket in 30 min.
ICIP: 2"
FF: 2" Return blow receded to surface
FCIP: # Return blow died
@45 min.
Recovered:
70' Gassy Oil
120' Gassy oil cut mud
(25% gas/25% oil/50% mud)
130' Gassy mud cut oil
(10% gas/60% oil/30% mud)
SIP: 1295-1296#
FP: 86-119/127-143#
HP: 1920-192#
BHT: 112F
Oil Gravity: 35 API

Morgan Mud Check
Vis 75/Wt 9.1/WL 5.6/LCM 4#

RTD 4400'
Drift Survey
1/8" @290'
3/4" @1518'
3/4" @3672'
1" @3922'
1/4" @4400'