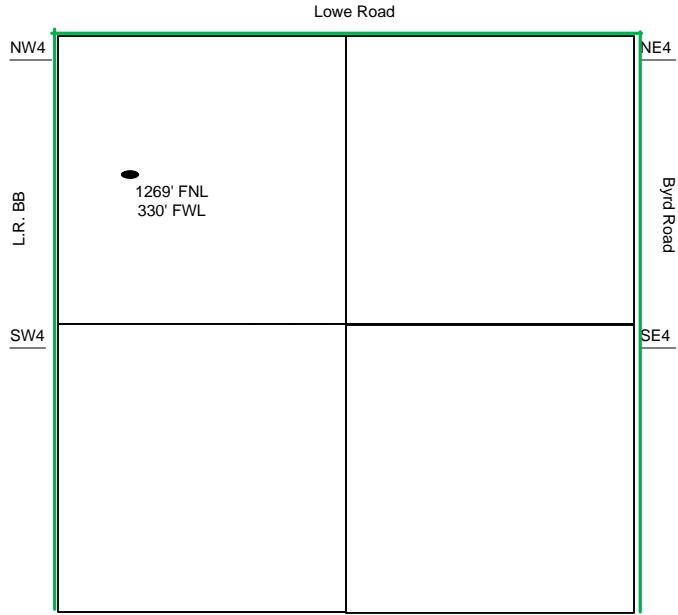
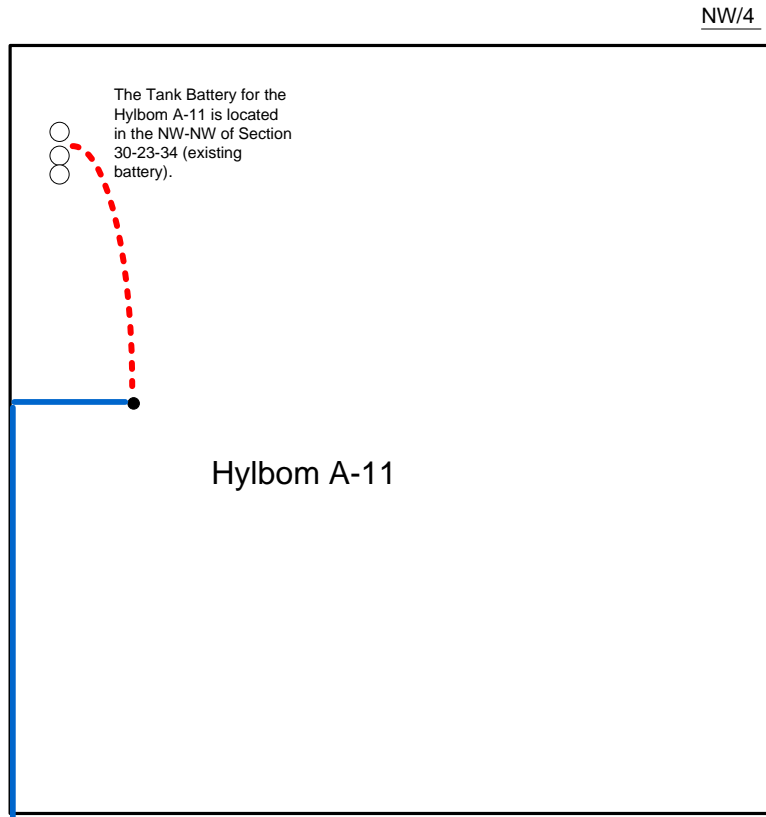


Proposed Plan of Construction
 Hylbom A-11
 Sec 30 T23S-R34W
 Finney County, KS



Sec 30 – T23S – R34W



Proposed Details of
 NW/4 Sec 30 – T23S – R34W

Proposed Site Diagram
 Hylbom A-11
 October 9, 2015

Note-Drawing **Not** to Scale