

# GEOLOGIST'S REPORT

## DRILLING TIME AND SAMPLE LOG

**SUEMAUR EXPLORATION & PROD., LLC**  
**GAEDE #1-19**  
**SEC. 19 TWP 7S RGE 28W**  
**SE NW SE SW**  
**981' FSL & 1852' FWL**  
**SHERIDAN COUNTY, KANSAS**  
**API: 15-179-21424-00-00**

**ELEVATION**  
 KB: 2797  
 GL: 2792  
 LOG MEASURED FROM: KB

**SURFACE CASING**  
 8 5/8" Set @295' w/ 270SX

**PRODUCTION CASING**

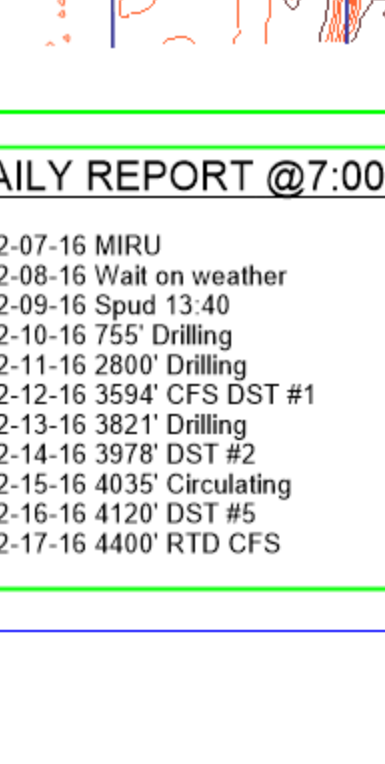
**DRILLING CONTR.: MURFIN RIG #7**  
**SPUD: 12-09-2016 COMP:**  
**MUD UP: 3050' TYPE MUD: CHEM.**  
**DRILL TIME: 3300' to RTD**  
**SAT: XXXX' LTD:XXXX'**  
**SAMPLES SAVED: 3350' to RTD**  
**GEOLOGIST: ROBERT J. PETERSEN**

**WELL LOG SURVEYS**  
 WEATHERFORD  
 Hi-Res AIL-DML-GR-SP

### ELECTRIC LOG TOPS

Formation	Sample Top	Datum	Ref A	Ref B
Stone Corral	2490	+307	-3	0
Base Stone Corral	2530	+387	N/A	+1
Stoller	3588	-771	+7	-9
Howard	3638	-841	+7	0
Topoka	3695	-898	+2	-10
Deer Creek	3740	-943	+7	-5
Crad	3854	-1057	+11	-4
Heebner	3898	-1101	+10	-6
Toronto	3924	-1127	+9	-6
Lansing	3940	-1143	+8	-6
C Zone	3971	-1174	+10	-5
D Zone	3979	-1182	+11	-4
E Zone	3999	-1202	+12	-4
F Zone	4012	-1215	+10	-7
G Zone	4026	-1229	+7	-8
Munroe Cr.	4053	-1256	+13	-9
H Zone	4089	-1312	+9	-10
J Zone	4111	-1314	+7	-11
Stark	4120	-1323	+8	-12
K Zone	4134	-1337	+7	-10
L Zone	4157	-1380	+7	-10
BKC	4170	-1373	+7	-11
Pawnee	4276	-1479	N/R	-12
Cherokee SH	4356	-1559	N/R	-14
Cherokee LS	4385	-1568	N/R	-12
RTD/4400	4400	-1803	208 shallow	43 deeper

### LOCATION MAP



### REFERENCE WELL A:

15-179-20079  
 DEAN & CLARK INC  
 HESTERBERG #1  
 (SAMPLE LOG TOPS)  
 C NE NE NE 25-7-29W  
 Longitude: -100.4979304  
 Latitude: 39.4219094  
 Sheridan County, KS

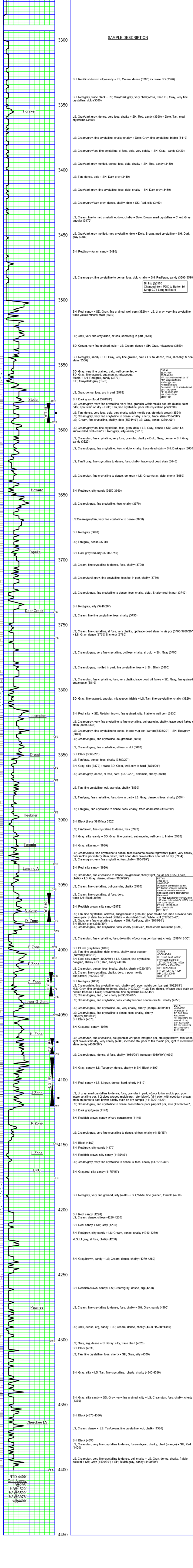
### REFERENCE WELL B:

15-179-21412  
 Suemaur Expt. & Prod., LLC  
 Oelke #1  
 (E LOG TOPS)  
 NE SE NW NE 18-7-28W  
 Longitude: -100.4839534  
 Latitude: 39.4497522  
 Sheridan County, KS

### DAILY REPORT @7:00 A.M.

12-07-16 MURU  
 12-09-16 Wait on weather  
 12-09-16 Spud 13:40  
 12-10-16 755' Drilling  
 12-11-16 2800' Drilling  
 12-12-16 3594' CFS DST #1  
 12-13-16 3821' CFS #2  
 12-14-16 3978' DST #2  
 12-15-16 4035' Circulating  
 12-16-16 4120' DST #5  
 12-17-16 4400' RTD CFS

### REMARKS AND RECOMMENDATIONS



### SAMPLE DESCRIPTION

SH, Reddish-brown silty-sandy + LS, Cream, dense (3360) increase SD (3370)

SH, Red/gray, trace black + LS, Gray/dark gray, very chalky-foss, trace LS; Gray, very fine crystalline, dolo (3380)

LS, Gray/dark gray, dense, very foss, chalky + SH; Red, sandy (3390) + Dolo; Tan, med crystalline (3400)

LS, Cream/gray, fine crystalline, chalky-shaley + Dolo; Gray, fine crystalline, friable (3410)

LS, Cream/gray/tan, fine crystalline, sl foss, dolo, very chalky + SH; Gray, sandy (3420)

LS, Gray/dark gray mottled, dense, foss, dolo, chalky + SH, Red, sandy (3430)

LS, Tan, dense, dolo + SH; Dark gray (3440)

LS, Gray/dark gray, fine crystalline, foss, dolo, chalky + SH; Dark gray (3450)

LS, Cream/gray/dark gray, dense, chalky, dolo + SH; Red, silty (3460)

LS, Cream, fine to med crystalline, dolo, chalky + Dolo; Brown, med crystalline + Chert; Gray, angular (3470)

LS, Gray/dark gray mottled, med crystalline, dolo + Dolo, Brown, med crystalline + SH; Dark gray (3480)

SH, Red/brown/gray, sandy (3490)

LS, Cream/gray, fine crystalline to dense, foss, dolo-chalky + SH; Red/gray, sandy (3500-3510)

**Bit trip @3500**  
 Changed from PDC to Button bit  
 Strap 0.74 Long to Board

SH, Red, sandy + SD; Gray, fine grained, well-cem (3520) + LS; Lt gray, very fine crystalline, trace yellow mineral stain (3530)

LS, Gray, very fine crystalline, sl foss, sandy/arg in part (3540)

SD, Cream, very fine grained, calc + LS, Cream, dense + SH; Gray, micaceous (3550)

SH, Red/gray, sandy + SD; Gray, very fine grained, calc + LS; ta, dense, foss, sl chalky, tr dead stain (3560)

SD, Gray, very fine grained, calc, well-cemented + SD; Gray, fine grained, subangular, micaceous, friable + SH; Red/gray, sandy (3570) + SH, Gray/dark gray (3578)

LS, Gray, dense, foss, arg in part (3578)

SH, Dark gray (foss 3578/20')

LS, Cream/gray, very fine crystalline, very foss, granular w/fair moldic por, sfo (black), faint odor, spot stain on dry + Dolo; Tan, fine crystalline, poor intercrystalline por (3590)

LS, Tan, dense, very foss, dolo, very chalky w/fair moldic por, sfo (dark brown) (3594)

LS, Cream/gray, very fine crystalline to dense, chalky, cherty, trace stain (3594/20')

LS, Cream, fine crystalline, chalky, dolo (3594/40'); LS; Gray, dense, (3594/60')

LS, Cream/gray/tan, fine crystalline, foss, gran, dolo + LS, Gray, dense + SD; Clear, f-c, subrounded, well-cem/SH; Red/gray, silty-sandy (3610)

LS, Cream/tan, fine crystalline, very foss, granular, chalky + Dolo; Gray, dense, + SH; Gray, sandy (3620)

LS, Cream/lt gray, fine crystalline, foss, sl dolo, chalky, trace dead stain + SH; Dark gray (3630)

LS, Tan/lt gray, fine crystalline to dense, foss, chalky, trace spot dead stain (3640)

LS, Cream/tan, fine crystalline to dense, ool-gran + LS; Cream/gray, dolo, cherty (3650)

SH, Red/gray, silty-sandy (3650-3660)

LS, Cream/lt gray, fine crystalline, foss, chalky (3670)

LS, Cream/gray/tan, very fine crystalline to dense (3680)

SH, Red/gray (3690)

LS, Tan/gray, dense (3700)

SH, Dark gray/red-silty (3700-3710)

LS, Cream, fine crystalline to dense, foss, chalky (3720)

LS, Cream/tan/lt gray, fine crystalline, foss/ool in part, chalky (3730)

LS, Cream/lt gray, fine crystalline to dense, foss, chalky, dolo, Shaley (red) in part (3740)

SH, Red/gray, silty (3740/20')

LS, Cream, fine fine crystalline, foss, chalky (3750)

LS, Cream, fine crystalline, sl foss, very chalky, ppt trace dead stain no vis por (3760-3760/20') + LS; Gray, dense (3770) Sl cherty (3780)

LS, Cream/lt gray, very fine crystalline, ool/foss, chalky, sl dolo + SH; Gray (3790)

LS, Cream/lt gray, mottled in part, fine crystalline, foss + tr SH; Black (3800)

LS, Cream/tan, fine crystalline, foss, very chalky, trace dead oil flakes + SD; Gray, fine grained, subangular (3810)

SD, Gray, fine grained, angular, micaceous, friable + LS; Tan, fine crystalline, chalky (3820)

SH, Red, silty + SD; Reddish-brown, fine grained, silty, friable to well-cem (3830)

LS, Cream/gray, very fine crystalline to fine crystalline, ool-granular, chalky, trace dead flakey oil stain (3830-3836)

LS, Cream/gray, fine crystalline to dense, tr poor vug por (barren) (3836/20') + SH; Red/gray (3840)

LS, Cream/lt gray, fine crystalline, ool-granular (3850)

LS, Cream/lt gray, fine crystalline, sl foss, sl dol (3860)

SH, Black (3860/20')

LS, Tan/gray, dense, foss, chalky (3860/20')

SH, Gray, silty (3870) + trace SD, Clear, well-cem to hard (3870/20')

LS, Cream/gray, dense, sl foss, hard (3870/20'), dolomitic, cherty (3880)

LS; Tan, fine crystalline, ool, granular, chalky (3890)

LS; Tan/gray, fine crystalline, foss, dolo in part + LS; Gray, dense, sl foss, chalky (3894)

LS; Tan/gray, fine crystalline to dense, foss, chalky, trace dead stain (3894/20')

SH, Black (trace 3910/incr 3920)

LS; Tan/brown, fine crystalline to dense, foss (3920)

SH, Gray, silty-sandy + SD, Gray, fine grained, subangular, well-cem to friable (3920)

SH, Gray, silty-sandy (3930)

LS, Cream/white, fine crystalline to dense, foss w/coarse calcite regrowth pyrrite, very chalky, poor moldic por w/fairy stain, vs/fo, faint odor, dark brown-black spot sat on dry (3934)

LS, Cream/gray, very fine crystalline, foss, chalky (3934/20')

SH, Red, silty-sandy (3950)

LS, Cream/tan, fine crystalline to dense, ool-granular, chalky, light, no vis por (3950/lt dolo, chalky + LS; Gray, dense, sl foss (3950/20')

LS, Cream, fine crystalline, ool-granular, chalky (3960)

LS, Cream, fine crystalline, sl foss, dolo, trace SH; Black (3970)

SH, Reddish-brown, silty-sandy (3978)

LS; Tan, fine crystalline, ool/foss, subgranular to granular, poor moldic por, med brown to dark brown patchy stain, trace dead oil flake + abundant Chalk; White, soft (3978/20-40')

LS, Gray, very fine crystalline to dense + SH; Red/gray, silty (3978/60')

LS, Cream/lt gray, fine crystalline, foss, cherty (3986/30') trace chert inclusions (3990)

LS, Cream/tan, fine crystalline, foss, dolomitic w/poor vug por (barren), cherty (3997/15-30')

SH, Bluish gray/black (4006)

LS; Tan, fine crystalline, dolo, cherty, chalky, poor vug por (barren) (4006/15')

SH, Red, silty-sandy (4006/30') + LS, Cream, fine crystalline, ool-gran, shaley + SH, Red, sandy (4020)

LS, Cream/tan, dense, foss, blocky, chalky, cherty (4020/15')

LS, Cream, fine crystalline, chalky, dolo, tr poor moldic por (barren) (4020/30-45')

SH, Red/gray (4030)

LS, Cream/white, fine crystalline, ool, chalky-soft, poor moldic por (barren) (4032/15')

+LS; Gray, fine crystalline to dense, chalky (4032/30') + LS, Tan, dense, w/trace dead stain on healed fracture + Dolo; Brown/cream, fine crystalline (4032/45')

SH, Bluish gray (3986/30')

LS, Cream/lt gray, fine crystalline, foss, chalky w/coarse calcite, chalky (4050)

LS, Cream/lt gray, fine crystalline, ool, very chalky, cherty (cherty) (4050/20')

LS, Cream/lt gray, fine crystalline to dense, foss, chalky, cherty

SH, Black (4070)

SH, Gray/red, sandy (4070)

LS, Cream/tan, fine crystalline, ool-granular w/tr poor intergran por, sfo (light brown) faint odor, light brown stain dry, very chalky (4080) increase sfo, poor to fair moldic por, light to med brown stain on dry (4080/20')

LS, Cream/lt gray, dense, sl foss, chalky (4080/20') increase (4080/40') (4090)

SH, Gray, sandy + LS; Tan/gray, dense, cherty-tr SH; Black (4100)

SH, Red, sandy + LS; Lt gray, dense, hard, cherty (4110)

LS; Lt gray, med crystalline to dense, foss, granular in part, w/poor to fair moldic por, poor intercrystalline por, 1-2 pieces w/wood moldic por, sfo (black), faint odor, with spot dark brown stain on pores to dark brown patchy stain on dry sample (4115/20'-4120)

LS, Cream/lt gray, fine crystalline to dense, w/trace poor pinpoint por, sfo (4120/20-40')

SH, Dark gray/green (4140)

SH, Reddish-brown, sandy w/hard concretions (4149)

LS, Cream/lt gray, very fine crystalline to dense, sl foss, chalky (4149/15')

SH, Red/gray (4160)

SH, Black (4300)

SH, Reddish-brown, silty-sandy (4175/15')

LS, Cream/gray, very fine crystalline to dense, sl foss, chalky (4175/15-30')

SH, Gray/red, silty-sandy (4175/45')

SD, Red/gray, very fine grained, silty (4200) + SD, White, fine grained, finable (4210)

SH, Red, sandy (4220)

LS, Cream, dense, sl foss (4220-4230)

SH, Red, sandy + SH; Gray (4230)

SH, Red/gray, silty-sandy + LS, Cream, dense, chalky (4240-4250)

+LS; Lt gray, sl foss, chalky (4260)

SH, Gray/brown, sandy + LS; Cream, dense, chalky (4270-4280)

SH, Reddish-brown, sandy + LS; Cream/gray, dense, arg (4290)

LS, Cream, fine crystalline to dense, foss, chalky + SH; Gray, sandy (4300)

LS, Gray, dense, arg, sandy + LS; Cream, dense, chalky (4300/15-30'/4310)

LS, Gray, arg, dense + SH; Gray, silty, trace chert (4320)

SH, Black (4330)

LS, Tan, fine crystalline, foss, cherty + SH; Gray, silty (4330)

SH, Gray, silty + LS; Tan, fine crystalline, cherty, chalky (4340-4350)

SH, Gray, silty-sandy + SD; Gray, very fine grained, silty + LS; Cream/tan, foss, chalky, cherty (4360)

SH, Black (4370-4380)

LS, Cream, dense + LS; Tan/cream, fine crystalline, ool, chalky (4380)

SH, Black (4390)

LS, Cream/tan, very fine crystalline to dense, foss-subgran, chalky, chert (orange) + SH; Red (4400)

LS, Cream/tan, very fine crystalline to dense, ool, chalky + LS; Gray, dense, chalky, friable, pelletal + SH; Gray (4400/30') + SH, Bluish-gray, sandy (4400/60')

RTD 4400'  
 Drift Survey  
 1' @ 295'  
 1/2' @ 3500'  
 3/4' @ 3978'  
 x @ 4400'