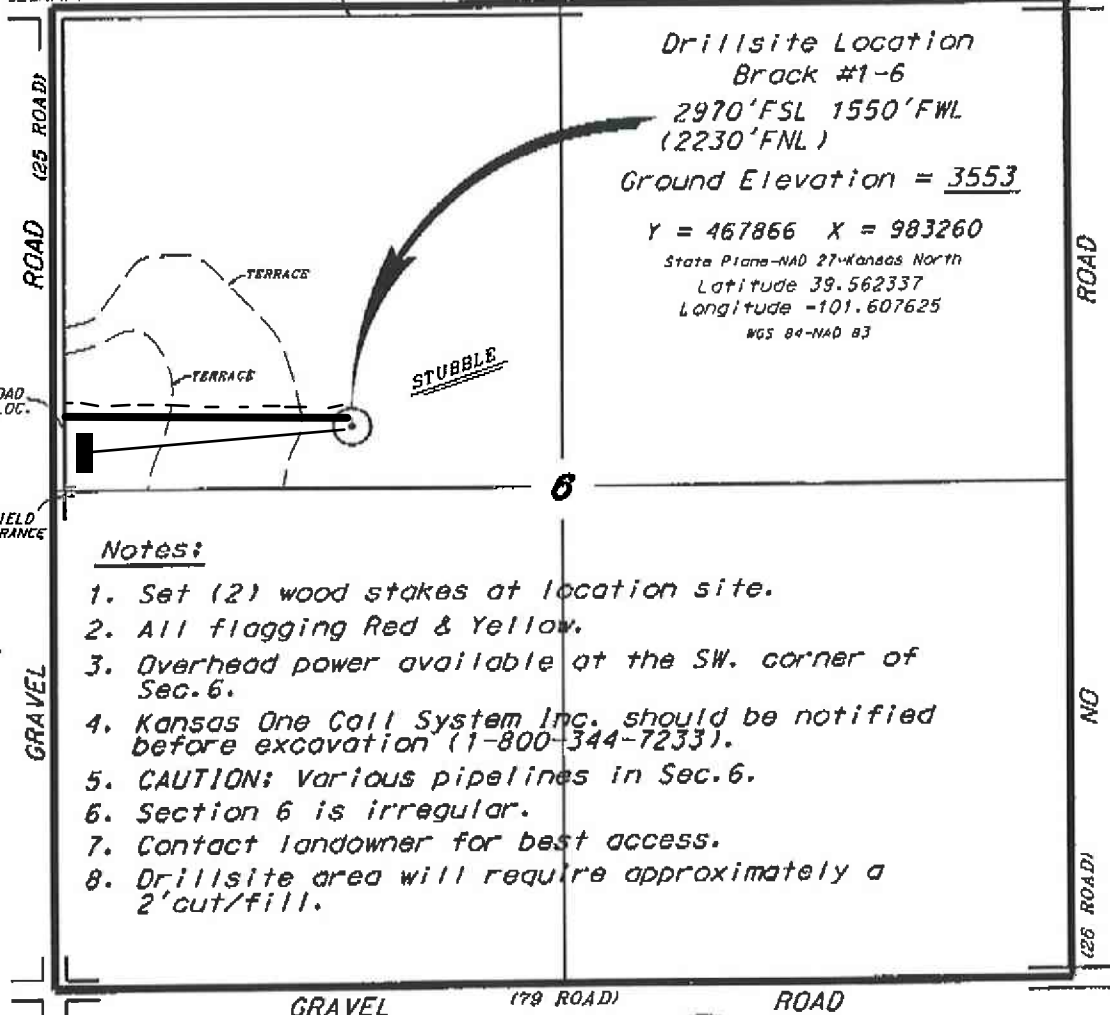


L.D. DRILLING, INC.
BRACK LEASE
 NW.1/4, SECTION 6, T6S, R38W
 SHERMAN COUNTY, KANSAS

Directions:

From the intersection of Highway 27 and Interstate 70 (0.5 miles south of Goodland, Kansas) go 15.9 miles North on Highway 27, then go 5.0 miles East on a county road to the SW corner of Section 6, then go 0.56 miles North to a flag on the east edge of road, then go 0.29 miles East to location.

FLAGGED ROAD OPPOSITE LOC. GRAVEL (80 ROAD) ROAD



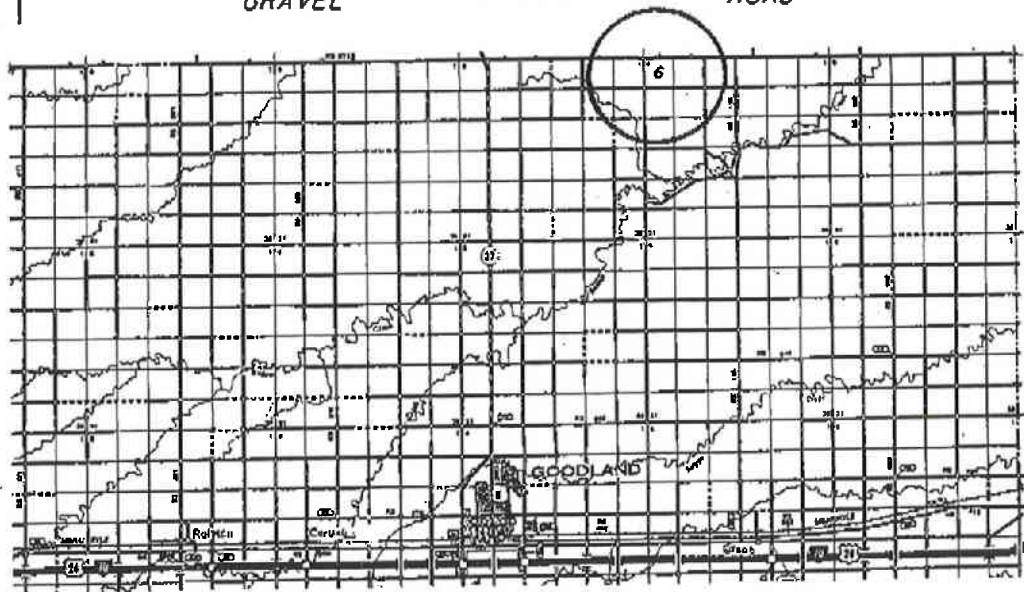
Drillsite Location
 Brack #1-6
 2970'FSL 1550'FWL
 (2230'FNL)
 Ground Elevation = 3553
 Y = 467866 X = 983260
 State Plane-NAD 27-Kansas North
 Latitude 39.562337
 Longitude -101.607625
 NGS 84-NAD 83



Notes:

1. Set (2) wood stakes at location site.
2. All flagging Red & Yellow.
3. Overhead power available at the SW. corner of Sec. 6.
4. Kansas One Call System Inc. should be notified before excavation (1-800-344-7233).
5. CAUTION: Various pipelines in Sec. 6.
6. Section 6 is irregular.
7. Contact landowner for best access.
8. Drillsite area will require approximately a 2' cut/fill.

*Ingress and egress to location as shown on this plat is per usage only and may not be legally opened for public use. Contact landowner, tenant and county road department for access.



Controlling data is based upon the best maps and photographs available to us and upon a regular section of land containing 640 acres.
 Appropriate section lines were determined using the normal standards of care of oilfield surveyors practicing in the state of Kansas. The section corners, which establish the precise section lines, were not necessarily located, and the exact location of the drillsite location in the section is not guaranteed. Therefore, the operator assuming this service and accepting this plat and all other parties relying thereon agree to hold Central Kansas Oilfield Services, Inc., its officers and employees harmless from all losses, costs and expenses and said entities released from any liability from incidental or consequential damages.
 Elevations derived from National Geodetic Vertical Datum.

Date January 9, 2017

*KANSAS
1-10-16*