



GEOLGISTS REPORT  
DRILL TIME &  
SAMPLE LOG

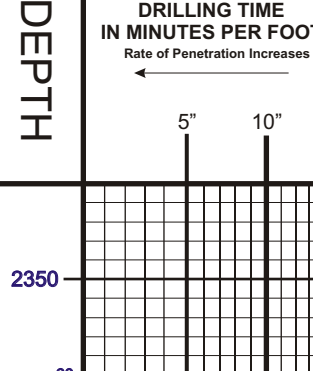
COMPANY: COBALT ENERGY, LLC  
LEASE: Binns 'A' #1-32  
FIELD: Windfall

ELEVATIONS  
KB: 3051'

LOCATION: 1067' FSL & 1032' FEL  
SEC: 32 TWP: 15S RGE: 33W  
COUNTY: Logan STATE: KS  
CONTRACTOR: Murtin Drilling Co., Rig #21  
SPUD: 08/16/16 COMP: 08/28/16  
RTD: 4/29/17 TYPE: LTD 4794'  
MUD: 3415' TYPE: MUD Chemical  
SAMPLES SAVED FROM: 3800' TO RTD  
DRILLING TIME KEPT FROM: 3500' TO RTD  
SAMPLING EXAMINED FROM: 3800' TO RTD

GEOLGIST ON WELL: Corey N. Baker  
GEOLOGICAL SUPERVISION FROM: 3550' to RTD  
Microlog & sonic  
Pioneer Energy Services

FORMATION TOPS  
Anhydrite: 2415 (+636)  
Base of Anhydrite: 2433 (+618)  
Heebner: 3925 (+884)  
Lansing: 3971 (+920)  
Stark: 4266 (+1291)  
Cherokee Shale: 4587 (+1589)  
LITHOLOGY: 4700 (-1459)  
4734 (-1743)

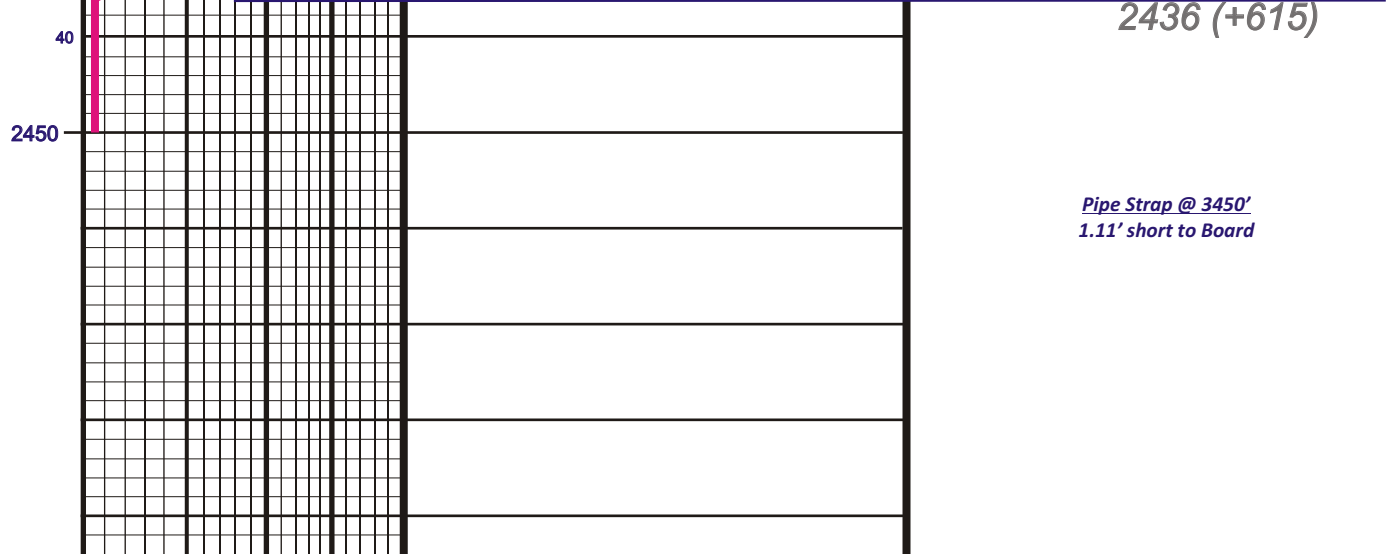


REMARKS The Binns 'A' #1-32 well had a positive drill stem test in the Marmaton (DST #6). 5.5" production casing will be run to test this well through perforations.

Respectfully Submitted,  
Corey Baker  
Vice President - Exploration  
Cobalt Energy, LLC

API #15-109-21454-00-00

LEGEND



Main data table with columns: DEPTH, DRILLING TIME, OIL SHOWS, SAMPLE DESCRIPTION, REMARKS. Includes depth scale from 2350 to 4850, drilling time graph, and detailed sample descriptions for various geological units.