



TRILOBITE TESTING, INC.

DRILL STEM TEST REPORT

Blue Ridge Petroleum
 PO Box 30545
 Edmond OK
 73003+0010
 ATTN: Wyatt Urban

12/3S/29W/Decatur

Brown #2-12

Job Ticket: 61939

DST#: 4

Test Start: 2016.10.16 @ 10:05:00

GENERAL INFORMATION:

Formation: **Lansing/Kansas City**

Deviated: No Whipstock: ft (KB)

Time Tool Opened: 11:45:30

Time Test Ended: 15:48:30

Test Type: Conventional Bottom Hole (Initial)

Tester: Ken Swinney

Unit No: 72 Oberlin/4

Interval: 3650.00 ft (KB) To 3720.00 ft (KB) (TVD)

Reference Elevations: 2555.00 ft (KB)

Total Depth: 3720.00 ft (KB) (TVD)

2547.00 ft (CF)

Hole Diameter: 7.80 inches Hole Condition: Fair

KB to GR/CF: 8.00 ft

Serial #: 6999

Press@RunDepth: 37.97 psig @ ft (KB)

Capacity: 8000.00 psig

Start Date: 2016.10.16 End Date: 2016.10.16

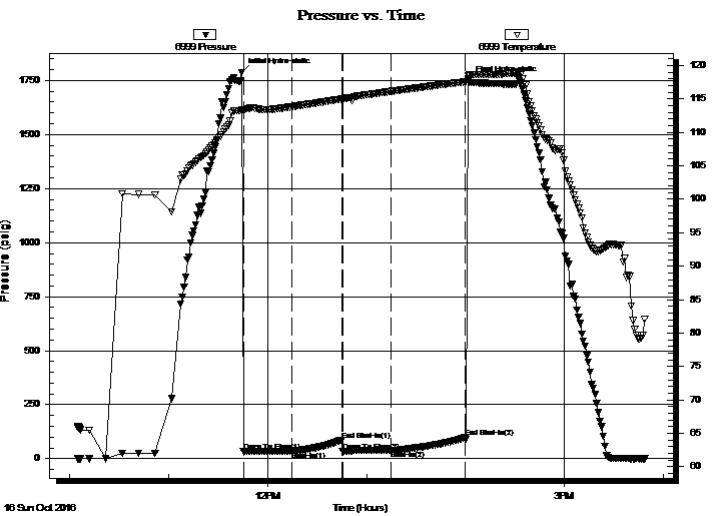
Last Calib.: 2016.10.16

Start Time: 10:05:05 End Time: 15:48:29

Time On Btm: 2016.10.16 @ 11:44:30

Time Off Btm: 2016.10.16 @ 14:02:00

TEST COMMENT: I.F. 30 minutes/Surface blow died in 7 minutes
 I.S.I. 30 minutes/No blow back
 F.F. 30 minutes/No blow /Flush tool no help
 F.S.I. 45 minutes/No blow back



PRESSURE SUMMARY

Time (Min.)	Pressure (psig)	Temp (deg F)	Annotation
0	1787.48	113.37	Initial Hydro-static
1	34.17	113.23	Open To Flow (1)
30	35.32	113.81	Shut-In(1)
61	87.20	114.98	End Shut-In(1)
61	35.62	114.98	Open To Flow (2)
91	37.97	116.12	Shut-In(2)
136	98.99	117.55	End Shut-In(2)
138	1749.35	118.51	Final Hydro-static

Recovery

Length (ft)	Description	Volume (bbl)
5.00	Oil spotted Mud	0.04

Gas Rates

Choke (inches)	Pressure (psig)	Gas Rate (Mcf/d)



TRILOBITE TESTING, INC.

DRILL STEM TEST REPORT

Blue Ridge Petroleum
 PO Box 30545
 Edmond OK
 73003+0010
 ATTN: Wyatt Urban

12/3S/29W/Decatur

Brown #2-12

Job Ticket: 61939

DST#: 4

Test Start: 2016.10.16 @ 10:05:00

GENERAL INFORMATION:

Formation: **Lansing/Kansas City**

Deviated: No Whipstock: ft (KB)

Time Tool Opened: 11:45:30

Time Test Ended: 15:48:30

Test Type: Conventional Bottom Hole (Initial)

Tester: Ken Swinney

Unit No: 72 Oberlin/4

Interval: **3650.00 ft (KB) To 3720.00 ft (KB) (TVD)**

Reference Elevations: 2555.00 ft (KB)

Total Depth: 3720.00 ft (KB) (TVD)

2547.00 ft (CF)

Hole Diameter: 7.80 inches Hole Condition: Fair

KB to GR/CF: 8.00 ft

Serial #: 8960

Press@RunDepth: 98.40 psig @ ft (KB)

Capacity: 8000.00 psig

Start Date: 2016.10.16

End Date: 2016.10.16

Last Calib.: 2016.10.16

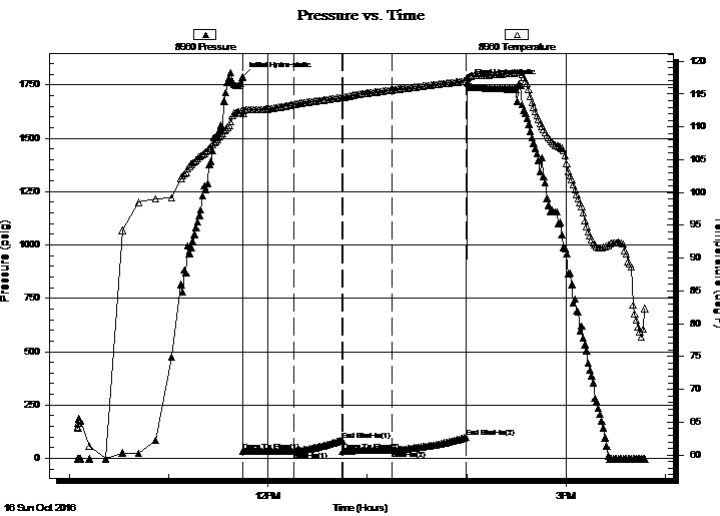
Start Time: 10:05:05

End Time: 15:47:59

Time On Btm: 2016.10.16 @ 11:44:30

Time Off Btm: 2016.10.16 @ 14:01:00

TEST COMMENT: I.F. 30 minutes/Surface blow died in 7 minutes
 I.S.I. 30 minutes/No blow back
 F.F. 30 minutes/No blow /Flush tool no help
 F.S.I. 45 minutes/No blow back



PRESSURE SUMMARY

Time (Min.)	Pressure (psig)	Temp (deg F)	Annotation
0	1786.93	112.54	Initial Hydro-static
1	32.28	112.04	Open To Flow (1)
31	33.87	113.42	Shut-In(1)
60	86.70	114.49	End Shut-In(1)
61	34.01	114.46	Open To Flow (2)
91	36.46	115.63	Shut-In(2)
135	98.40	117.00	End Shut-In(2)
137	1757.67	117.53	Final Hydro-static

Recovery

Length (ft)	Description	Volume (bbl)
5.00	Oil spotted Mud	0.04

Gas Rates

	Choke (inches)	Pressure (psig)	Gas Rate (Mcf/d)



**TRILOBITE
TESTING, INC**

DRILL STEM TEST REPORT

FLUID SUMMARY

Blue Ridge Petroleum

12/3S/29W/Decatur

PO Box 30545
Edmond OK
73003+0010

Brown #2-12

Job Ticket: 61939

DST#: 4

ATTN: Wyatt Urban

Test Start: 2016.10.16 @ 10:05:00

Mud and Cushion Information

Mud Type: Gel Chem

Cushion Type:

Oil API:

deg API

Mud Weight: 9.00 lb/gal

Cushion Length:

ft

Water Salinity:

ppm

Viscosity: 54.00 sec/qt

Cushion Volume:

bbbl

Water Loss: 6.40 in³

Gas Cushion Type:

Resistivity: ohm.m

Gas Cushion Pressure:

psig

Salinity: 900.00 ppm

Filter Cake: 1.00 inches

Recovery Information

Recovery Table

Length ft	Description	Volume bbl
5.00	Oil spotted Mud	0.044

Total Length: 5.00 ft Total Volume: 0.044 bbl

Num Fluid Samples: 0

Num Gas Bombs: 0

Serial #:

Laboratory Name:

Laboratory Location:

Recovery Comments:

