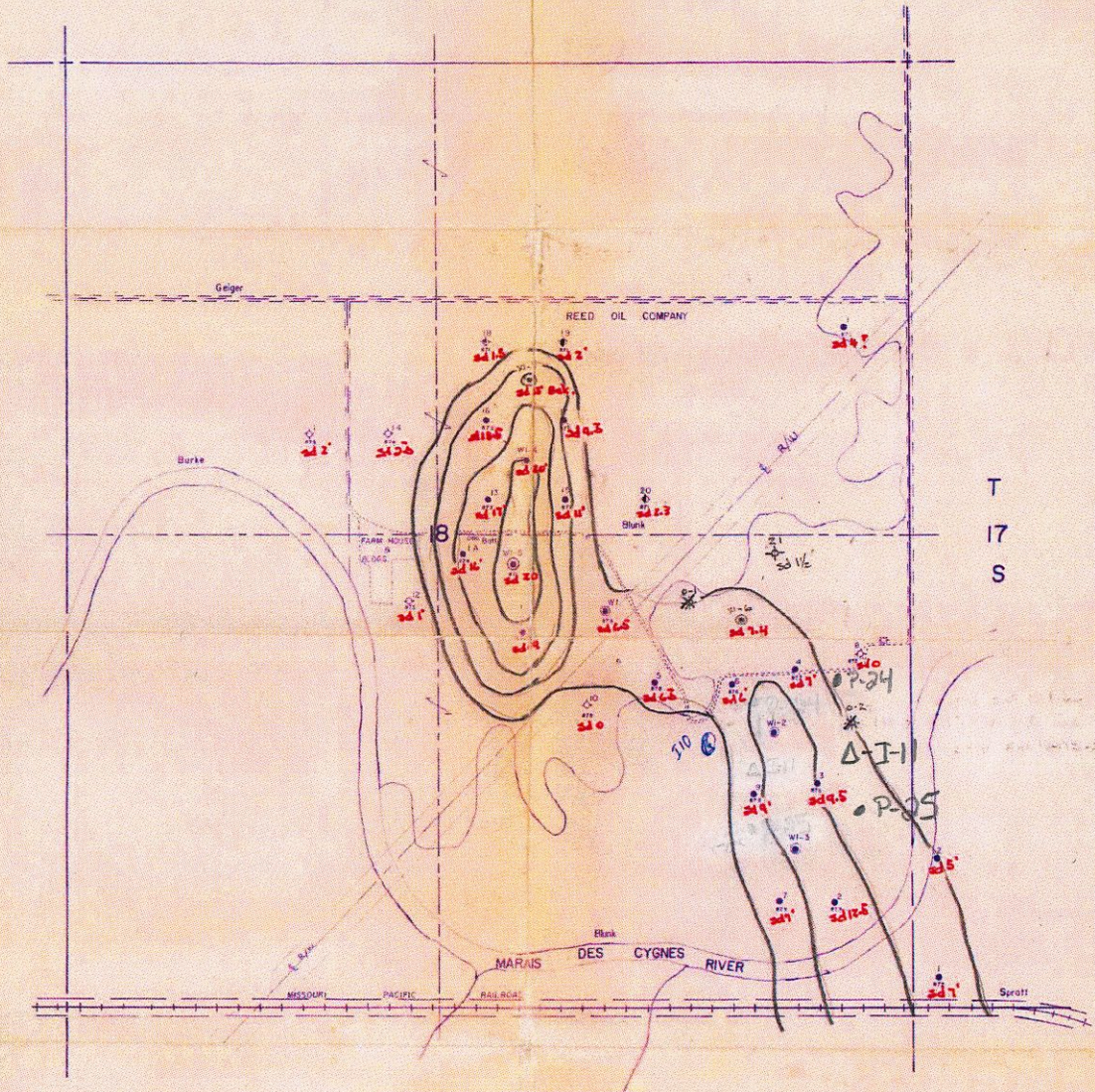


R-21-E



T  
17  
S

REED OIL COMPANY  
Blunk LEASE  
RANTOUL AREA

Franklin County, Kansas

SCALE 1" = 400'

LEGEND

- OIL WELL
- PROPOSED OIL WELL LOCATION
- ✖ ABANDONED OIL WELL
- ✖ PLUGGED & ABANDONED OIL WELL
- ⊕ OIL WELL CONVERTED TO WATER INPUT
- ⊛ GAS WELL
- ⊛\* COMBINED GAS & OIL
- ⊛\* APPROX WELL LOCATIONS
- ⊙ PROPOSED WATER INPUT LOCATION
- ⊙ WATER INPUT WELL
- ⊙ ABANDONED WATER INPUT WELL
- ⊙ DRY HOLE
- ⊙ WATER SUPPLY WELL
- ⊙ ABANDONED GAS WELL
- ⊙ TEMPORARILY ABANDONED OIL WELL

NOTE: Map copied from other maps and aerial photographs.

OILFIELD RESEARCH LABORATORIES  
CHANUTE, KANSAS  
REVISED

DATE FEBRUARY 2, 1938