



PETERRA ENERGY SERVICES CONSULTING FROM PROSPECT TO PIPELINE

Scale 1:240 (5"=100') Imperial Measured Depth Log

Well Name: Young #1
API: 15-151-22456
Location: 1700' FNL & 1700' FEL NE/4 of Section 7 T26S R13W
License Number: 35414
Drilling Completed: 1/12/2017
Region: Pratt County
Surface Coordinates: Latitude (NAD 27) -98.7817926 Longitude (NAD 27) 37.8019744
Bottom Hole: Same as Surface Coordinates
Coordinates: 1960' To: 4400' K.B. Elevation (ft): 1970'
Logged Interval: Simpson Shale @ Total Depth (ft): 4400'
Type of Drilling Fluid: Chemical Drispac (KDT) Ken Drupp
Printed by MudLog from WellSight Systems 1-800-447-1534 www.WellSight.com

OPERATOR

Company: Royal Energy, Inc.
Address: Mr. Dane Little
402 S. Cedar Street,
Meade, KS 67654

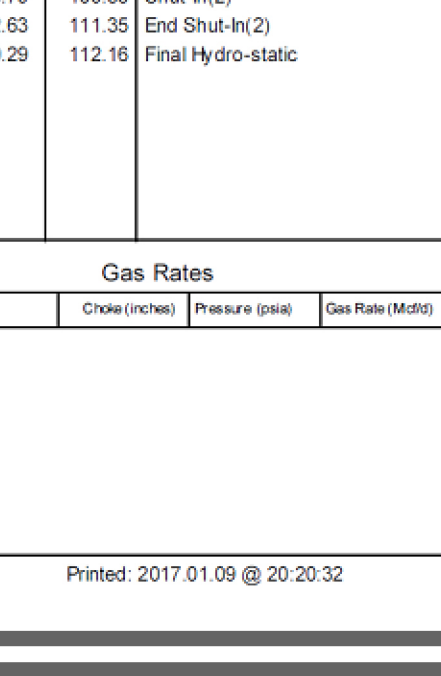
GEOLOGIST

Name: Jeffrey A. Burk & Eli J. Felts
Company: PETERRA Energy Services
Address: 7701 E. Kellogg Drive Ste #625
Wichita, KS 67207-1705

Comments

The Young #1 ran structurally low to the surrounding wells. All live shows were evaluated by Drill Stem Testing and/or electronic log evaluation. Due to the DST results and saltwater saturation calculations it was decided to plug the test well as non-commercial.
Best Regards,
Peterra Energy Services,
Jeffrey A. Burk & Eli J. Felts

Table with 4 columns: Formation, Depth, Stratigraphic Correlation, and Well Name. Lists formations like Lafayette Top, Lafayette Base, Howard, Heebner, Toronto, Simpson, etc.



REFERENCE WELLS E-LOG TOPS table with columns for Well Name, Formation, and Depth.

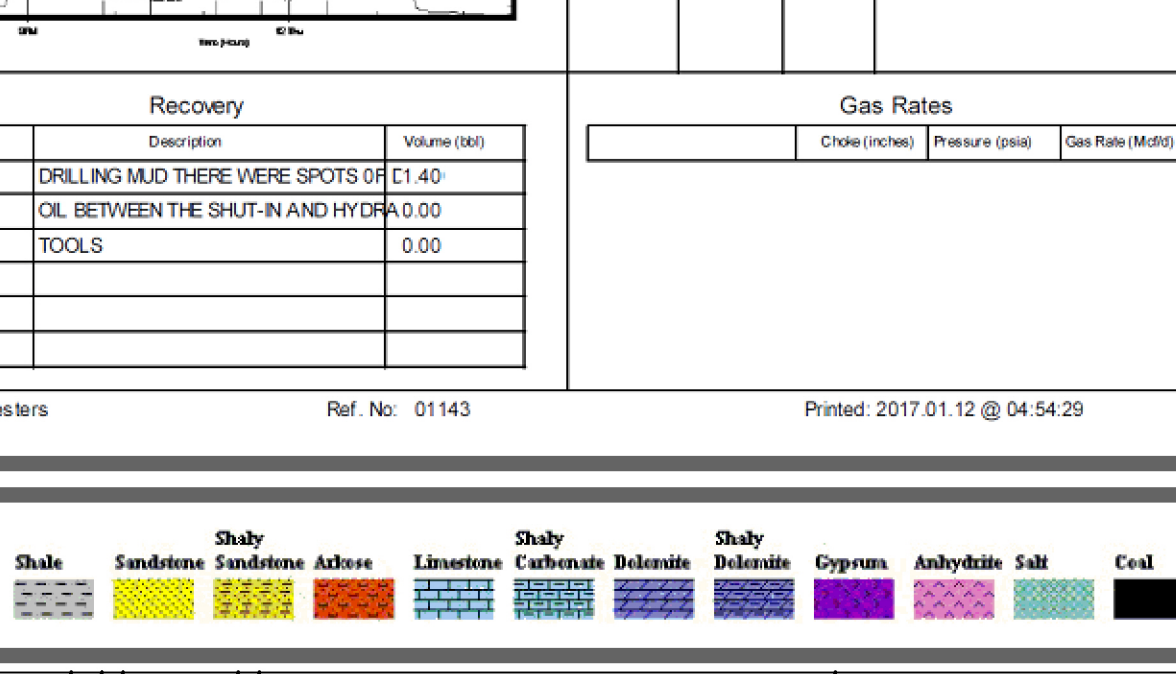
DRILL STEM TEST REPORT

ROYAL ENERGY INC. 7-26S-13W PRATT
402 CEDAR STREET MEADE, KANSAS 67654
ATTN: JEFF BURK
YOUNG 31
Job Ticket: 01143 DST#: 1
Test Start: 2017.01.09 @ 12:56:00

GENERAL INFORMATION:
Formation: LANSING 'A' ft
Deviated: No Whipstock
Time Tool Opened: 15:31:00
Time Test Ended: 19:40:00
Interval: 3875.00 ft (KB) To 3835.00 ft (KB) (TVD)
Hole Diameter: 7.86 inches/Hole Condition: Fair

Serial #: 9139
Outside @ 3835.07 ft (KB)
Pressure: 522.83 psia
End Date: 2017.01.09
Capacity: 2017.01.09
Time On Btm: 2017.01.09 @ 15:29:30
Time Off Btm: 2017.01.09 @ 17:48:30

TEST COMMENT:
1ST OPENING 30 MINUTES FAIR BLOW BUILT TO THE BOTTOM OF A 5 GALLON BUCKET IN 6 MINUTES
1ST SHUT-IN 45 MINUTES NO BLOW BACK
2ND OPENING 30 MINUTES WEAK BLOW BUILT TO 1 1/2 INCH DECREASED IN 27 MINUTES 2ND SHUT-IN 45 MINUTES NO BLOW BACK



RECOVERY table with columns: Length (ft), Description, Volume (barrel)

Gas Rates table with columns: Choke (inches), Pressure (psia), Gas Rate (Mcf/d)

Printed: 2017.01.09 @ 20:20:32

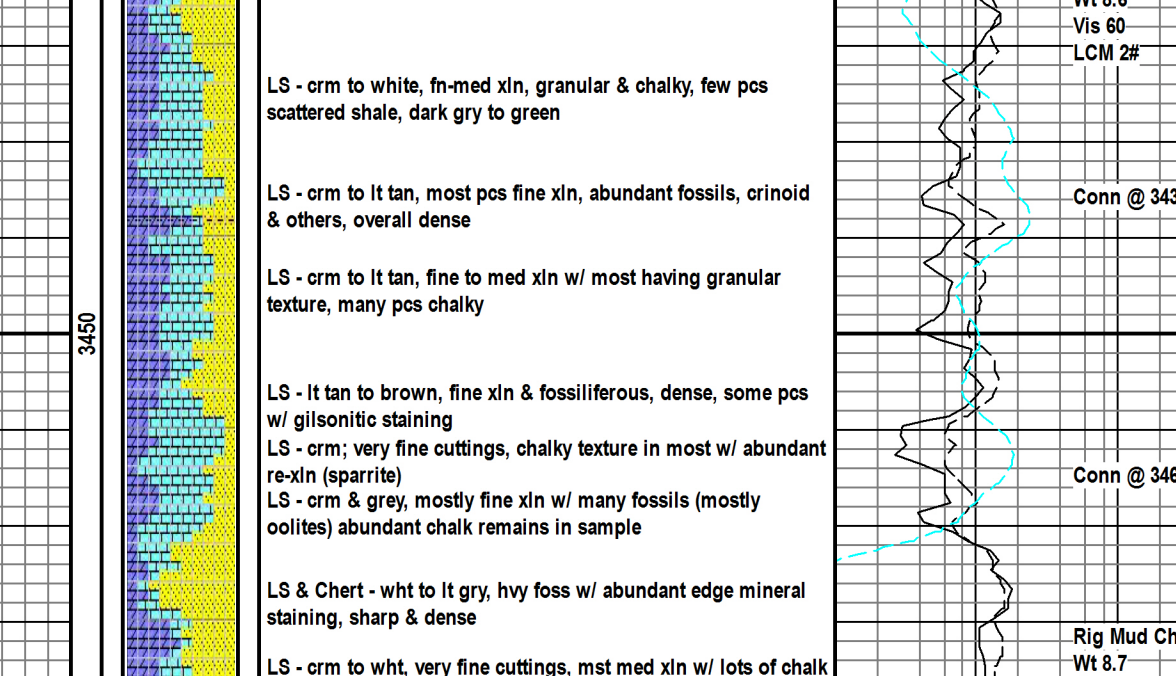
DRILL STEM TEST REPORT

ROYAL ENERGY INC. 7-26S-13W PRATT
402 CEDAR STREET MEADE, KANSAS 67654
ATTN: JEFF BURK
YOUNG 31
Job Ticket: 01142 DST#: 2
Test Start: 2017.01.10 @ 13:30:00

GENERAL INFORMATION:
Formation: LANSING 'H' ft
Deviated: No Whipstock
Time Tool Opened: 12:33:00
Time Test Ended: 00:00:00
Interval: 3939.00 ft (KB) To 3970.00 ft (KB) (TVD)
Hole Diameter: 3970.00 ft (KB) (TVD)
Hole Diameter: 7.86 inches/Hole Condition: Fair

Serial #: 9139
Outside @ 3965.00 ft (KB)
Pressure: 522.83 psia
End Date: 2017.01.10
Capacity: 5000.00 psia
Time On Btm: 2017.01.10 @ 13:27:30
Time Off Btm: 2017.01.10 @ 15:59:00

TEST COMMENT:
1st OPENING 30 MINUTES WEAK BLOW BUILT TO 1 1/2 INCHES
1ST SHUT-IN 45 MINUTES NO BLOW BACK
2ND OPENING 30 MINUTES WEAK BLOW BUILT TO 2 INCHES DECREASED AND DIED IN 5 MINUTES
2ND SHUT-IN 45 MINUTES NO BLOW BACK



RECOVERY table for the second test run.

Gas Rates table for the second test run.

Printed: 2017.01.12 @ 04:54:29

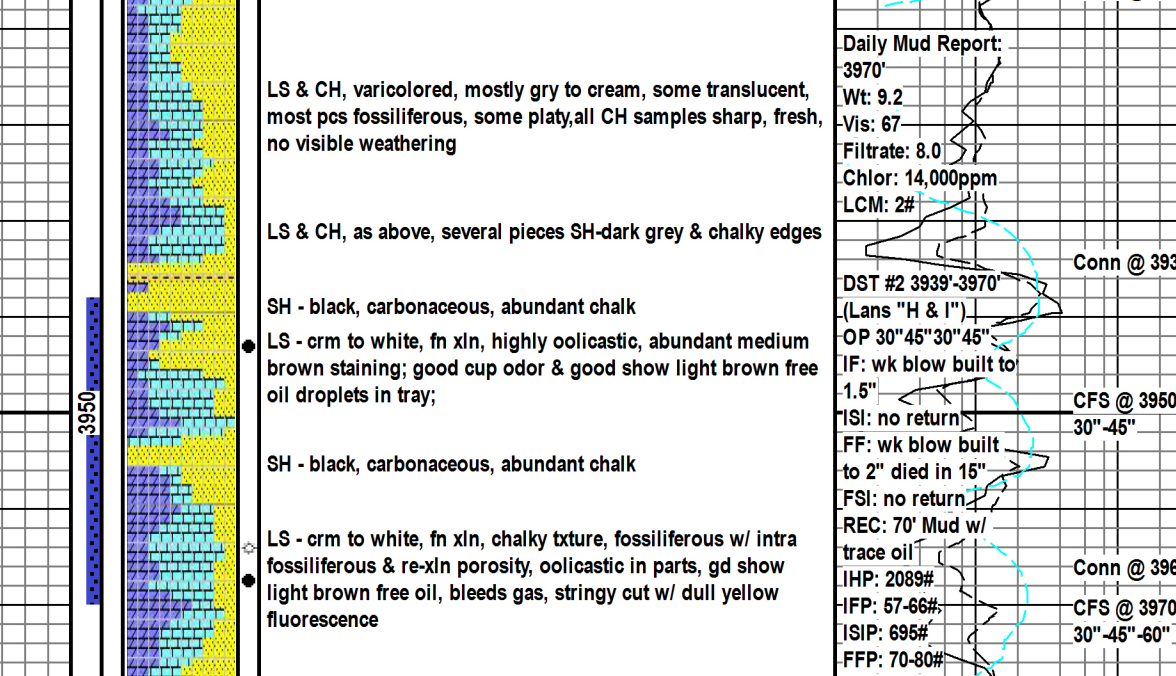
DRILL STEM TEST REPORT

ROYAL ENERGY INC. 7-26S-13W PRATT
402 CEDAR STREET MEADE, KANSAS 67654
ATTN: JEFF BURK
YOUNG 31
Job Ticket: 01143 DST#: 3
Test Start: 2017.01.12 @ 22:15:00

GENERAL INFORMATION:
Formation: KANDERHOOK/MISSISSIPPI
Deviated: No Whipstock
Time Tool Opened: 12:09:00
Time Test Ended: 00:00:00
Interval: 4250.00 ft (KB) To 4320.00 ft (KB) (TVD)
Hole Diameter: 4250.00 ft (KB) (TVD)
Hole Diameter: 7.86 inches/Hole Condition: Fair

Serial #: 91716
Inside @ 4314.35 ft (KB)
Pressure: 522.83 psia
End Date: 2017.01.12
Capacity: 5000.00 psia
Time On Btm: 2017.01.12 @ 22:05:30
Time Off Btm: 2017.01.12 @ 00:25:30

TEST COMMENT:
1ST OPENING 30 MINUTES WEAK BLOW FOR 18 MINUTES AND DIED
1ST SHUT-IN 45 MINUTES NO BLOW BACK
2ND OPENING 30 MINUTES WEAK BLOW 3 MINUTES DIED FLUSHED TOOL WEAR BLOW 4 MINUTES DIED
2ND SHUT-IN 45 MINUTES NO BLOW BACK



RECOVERY table for the third test run.

Gas Rates table for the third test run.

Printed: 2017.01.12 @ 04:54:29

