

KIM B. SHOEMAKER

CONSULTING GEOLOGIST

316-684-9709 * WICHITA, KS

GEOLOGIST'S REPORT

DRILLING TIME AND SAMPLE LOG

COMPANY ETERNITY EXPLORATION, LLC

LEASE Ø 1 LADENBURGER

FIELD WILDCAT

LOCATION SE SE SE, 330' FSL ÷ 330' FEL

SEC 13 TWP 9s RGE 32w

COUNTY THOMAS STATE KANSAS

CONTRACTOR WHITE KNIGHT DRILLING, LLC

SPUD 12-1-16 COMP 12-10-16

RTD 4730 LTD 4731

MUD UP 3352 TYPE MUD CHEMICAL

ELEVATIONS

KB 3032

DF _____

GL 3027

Measurements Are All
From 3032 KB

CASING

SURFACE 8 5/8" @ 247'

PRODUCTION 5 1/2" @

ELECTRICAL SURVEYS

DUAL IND., N-DENS, MICRO,
SONIC

SAMPLES SAVED FROM 3800 TO 4730

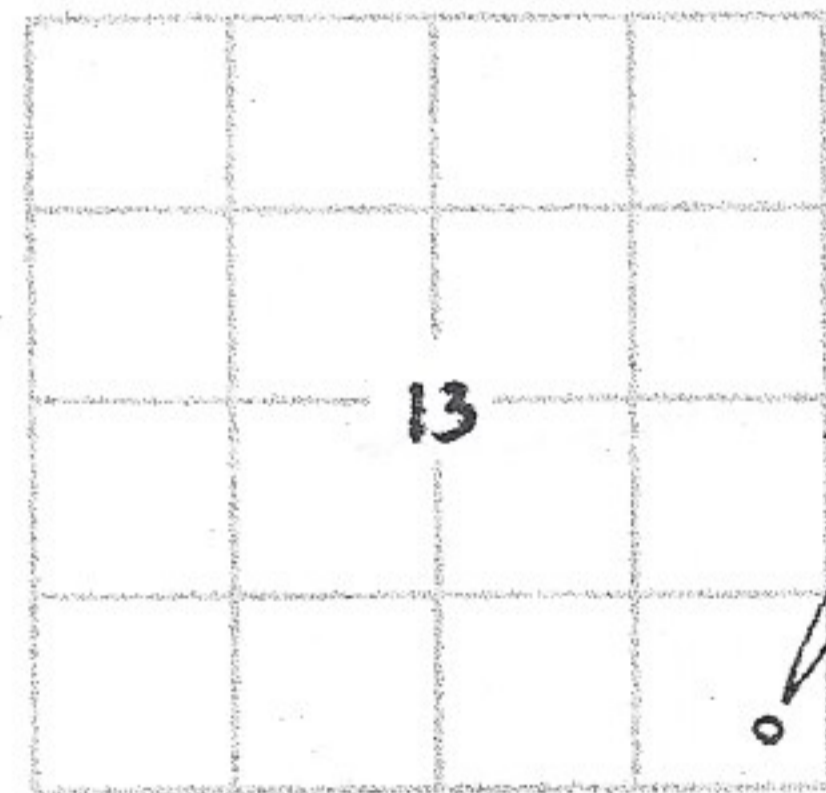
DRILLING TIME KEPT FROM 3500 TO 4730

SAMPLES EXAMINED FROM 3800 TO 4730

GEOLOGICAL SUPERVISION FROM 3800 TO 4730

GEOLOGIST ON WELL KIM B. SHOEMAKER

FORMATION TOPS	LOG	SAMPLES
ANHYDRITE	2624+ 408	2626+ 406
B/ANH.	2659+ 378	2659+ 373
HEEBNER	4021- 989	4021- 989
LANSING	4063- 1031	4063- 1031
STARK	4272- 1240	4274- 1242
HUSHPOCKNEY	4310- 1278	4310- 1278
B/KC	4336- 1304	4338- 1306
FORT SCOTT	4520- 1488	4520- 1488
CHEROKEE	4550- 1518	4550- 1518
MISSISSIPPI	4626- 1594	4627- 1595



API: 15-193-20980

REMARKS

12-1-16 SPUD
 12-2 @ 249'
 12-3 @ 1425'
 12-4 @ 2715'
 12-5 @ 3485'
 12-6 @ 4142'
 12-7 @ 4269'
 12-8 @ 4338'
 12-9 @ 4523'
 12-10 @ 4730'

4000

LS. wt Foss.ool. Calcitic

LS wt Vch lgy.

HEEBNER 4021-989
Sh. Blk Carb.

Sh. Lt. G. Blue ls Sdy.

TORONTO 4041-1009

LS wt Sh Foss. Foss. Pr. F. Vlsy
DK Br. Blk Wry Stn. VSSFD No Flour Noodor

LS wt Vsh Foss S&A

Sh Rd

LANSING 4063-1031

LS. wt Sliool.ool. Vsl. Chly.

LS. Tn wt ool. Sli Calcitic

Sh Rd.

4100

LS. Tn wt Sli. Foss Sli. & Vsl. Calcitic

Δ Orange

LS. wt Lgy. Vsl. Foss

LS. wt Lgy. V Foss. Suc. Sli Dolomitic

LS. wt Chly.

Sh. Rd.

LS. wt Sli Foss Sli Chly.

VIS: 64
WT: 9.4
WL: 10.8
CWL: 4000

LS. wt. Vsl. Foss Vsl. A

LS Tn lgy. Vsl. A

MUNCIE CREEK 4190-1158
Sh Blk Carb.

LS Br Vsl. Foss Sli Calcitic

Sh Lgy. W.

LS Tn Sli Foss F. Vly T. Br Stn. T. Fg
No Flour Noodor
(1) piece.

LS. wt Tn Sli A

Sh Blk.

LS Br lgy. Vsl. Foss.

* Bottom 62' appeared to me
to 30-40% oil
KBS

4200

DST
(1)

DST (1) 4185-4269

1ST OPEN: Blow built to 4 1/2"

2ND OPEN: " " " 4"

30-60-45-60

Rec. 62' 50CM (51.01)

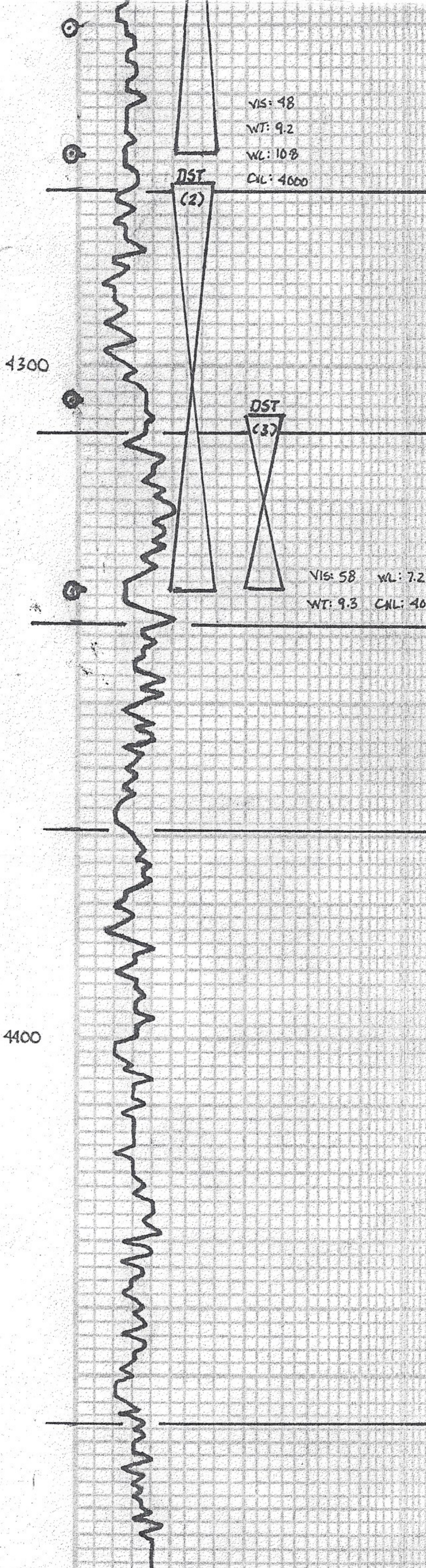
62' 0CM (101.01)

TF: 124'

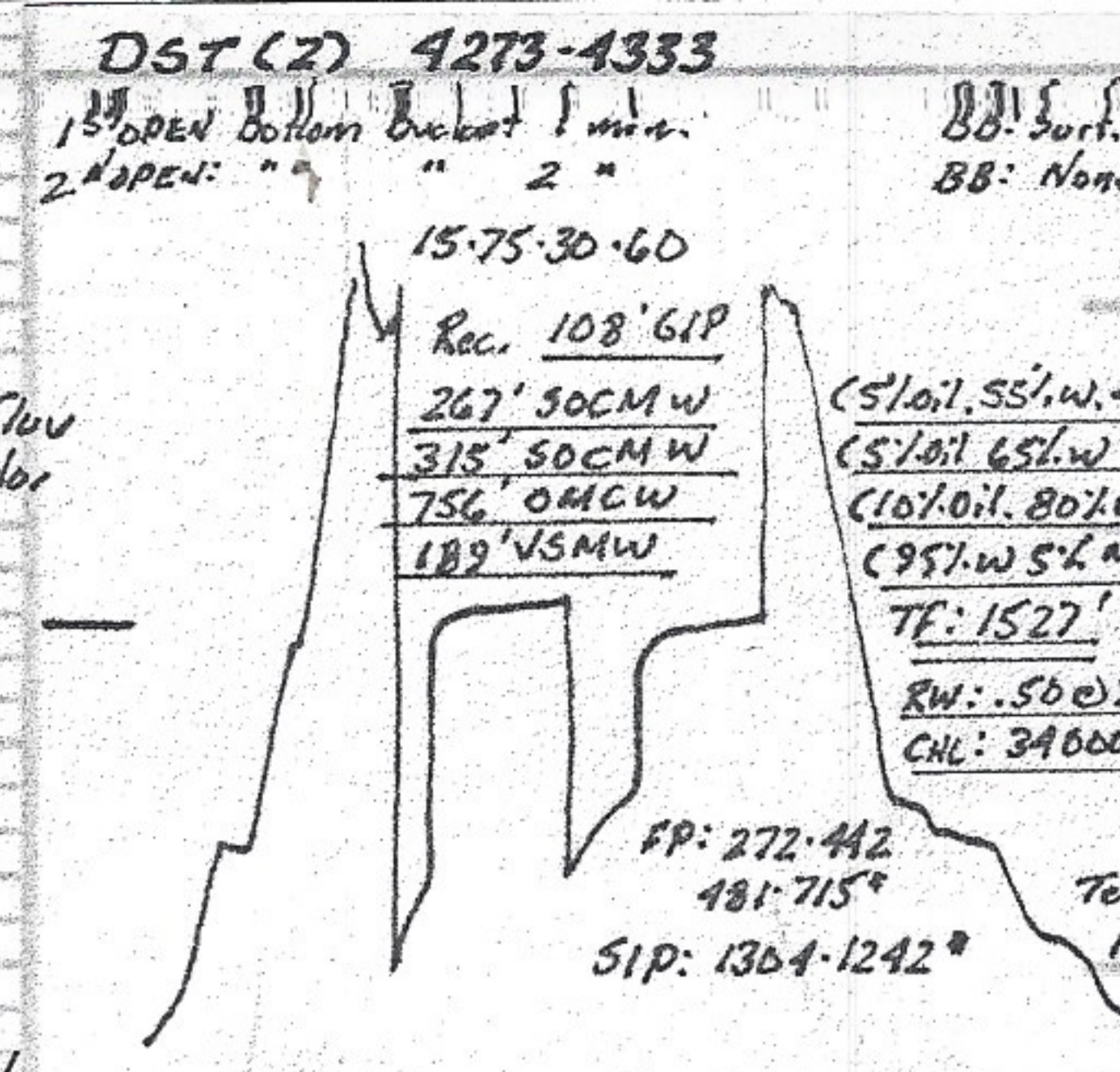
95% M)

90% M)

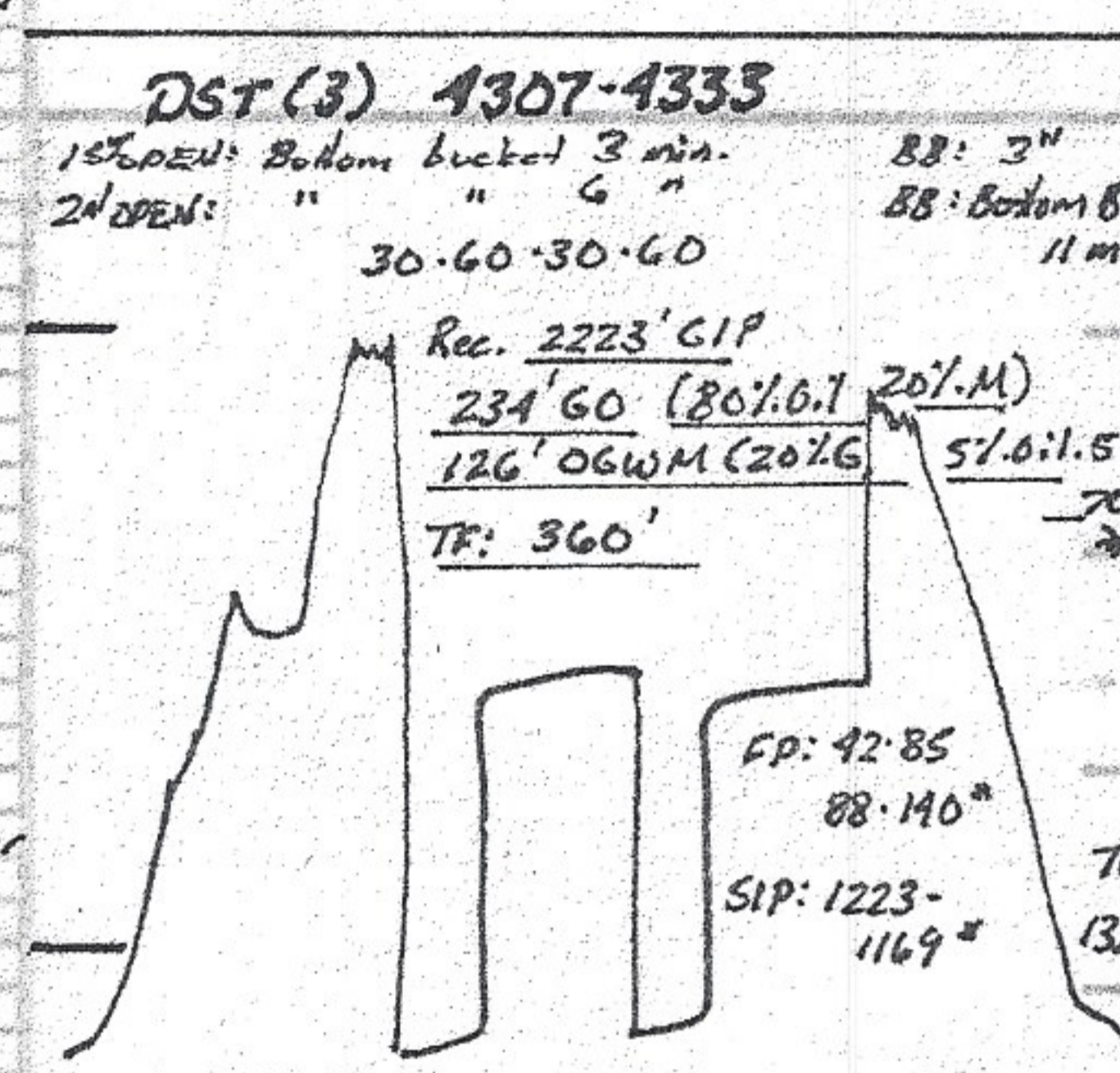
SP: 31-53



Sh. Lt. Lg.
 LS Lg. Tn wt Sil Foss VSii Chly.
 P. Vg p Lt Bt Spcl. Stn. SSFD F. Flow
 F. Odor



STARK 4274-1242
 Sh. Blk
 Sh. Rd Lg.
 LS Lg. wt Silool. Sil Chly.
 LS Lg. Sil Foss Foss F. Vg p Lt Spcl Stn
 SSFD Dull Flow F. Odor



HUSHPUCKNEY 4310-1278
 Sh Blk Carb.
 Sh Lg.
 LS.
 LS wt dol. Foss VSii A F. Vg p
 Lt Bt Spcl-Sol. Stn SSFD Ti 6.85
 F. Flow F. Odor

B/KC 4338-1306
 Sh. Rd Lg.
 LS Tn Lg. Foss
 Sdy sh. Lt Lt Bt - Silty

* Bottom 126' Appeared to Me to be muddy oil
 (40SD% oil) KBS

MARMATON 4369-1337
 LS. Tn wt VSii Foss SA A
 Sh Rd.
 Sh. Rd Silty. same shly LS.

LS. Lg. Foss.
 Sh Rd.
 Sh Rd Lg.
 LS. Lg. VSii Foss Sil Chly.
 LS. Tn Sil Foss Sil A LS wt chly.

PAWNEE 4457-1425
 Sh. Rd Lg. g.
 LS. Tn Lg. VSii Foss
 LS. Lg. VSii Foss

4300

4400

4500

Samples to TD were near Terrible. 90% sh mostly Rd. G.

sh. L. G.
Ls. Tn wt. VSl. Foss VSl. Ch. G.

SH BLK Carb.
FORT SCOTT 4520-1488

Ls. Tn G. Sl. Foss Sl. A

Δ G. Sl. Foss

Ls. Lt G. wt VSl. Foss Sl. A

CHEROKEE 4550-1518
sh Blk Carb.

Ls. wt. VSl. Ch. G.

Ls. Tn G. VSl. Foss Sl. A

sh. DK G.

JOHNSON 4588-1556

✓ LOG

Ls. Tn G. Sl. Foss P. V. Is. p. DK Br. Blk Sh
VSSFO - No Flow No odor

Sdy Ls Lt Blue

Sdy sh Lt G. Fr. Md. Gr. Sub Rd

sh Yellow G. weather Δ

VIS: 80
WT: 9.3
WL: 8.0
CIL: 5000

MISSISSIPPI 4627-1595

Dol. Tn V Foss Sh. Suc.

Ls. Tn wt V Foss Sh. Suc.

Dol. G. Lt G. V Foss Sl. Foss w/ R. G. Foss.

sh Yellow G.

Ls. Tn Foss Sl. A

Dol. G. V Foss Sh. Suc. w/ DK G. Incl.

Ls. Tn wt dol. Foss Sl. A Glassy.

4700

Ls. Tn G. Sl. Foss Calcitic

Ls. G. Foss Calcitic

OTD 4720-1480