



Depend on US

Post Job Report

Merit Energy

Jones 19-1

9/30/2016

8.625" Surface Casing

Finney County, KS





Table of Contents:

1.0 Executive Summary.....3

2.0 Job Summary.....4

 2.1 Job Event Log.....4

 2.2 Job Chart.....5

3.0 Water Testing.....6

4.0 Customer Satisfaction Survey.....7



1.0 Executive Summary

Allied Oil & Gas Services would like to thank you for the award of the provision of cementing products and services on the well Jones 19-1.

A pre-job meeting was held to discuss job details, review the safety hazards, potential environmental impact and established emergency procedures.

Allied started the job testing lines to 2000 psi. After a successful test we began the job by pumping 10 bbls of Fresh Water spacer. We then mixed and pumped the following cements:

193.02	bbl	425	Sacks of 12.1 ppg
Class A Slurry -		2.55	Yield

- 2.0% Sodium Metasilicate
- 2.0% Gypsum
- 4.0% Gel
- 2.0% Sodium Chloride
- 3.0 % Calcium Chloride
- 0.25 lb Cellophane Flake

39.58	bbl	175	Sacks of 15.2 ppg
Class A Slurry -		1.27	Yield

- 2.0 % Calcium Chloride
- 0.25 lb Cellophane Flake

The top plug was then released and displaced with 102 Bbls of Fresh Water. The plug bumped and was pressured to 1500 psi. Upon release the floats held.

All real time data can be view in the Job Summary section.

Allied Oil & Gas Services remains committed to provide operational excellence and superior product performance. All comments and suggestions are greatly appreciated and help us to continue to provide this level of service.

Again we want to thank you for the opportunity to perform these and your future cementing & acidizing service needs.



Cement Job Summary

Job Number: Lib1609301708		Job Purpose 01 Surface	
Customer: MERIT ENERGY COMPANY	Date: 9/30/2016		
Well Name: Jones	Number: 19-1	API/UWI:	
County:	City:	State: KS	
Cust. Rep:	Phone:	Rig Phone:	
Legal Desc:	Rig Name: Duke Drilling#9		
Distance 50 miles (one way)	Supervisor: Hector Esqueda		

Employees:	Emp. ID:	Employees:	Emp. ID:
Hector E		Carlos I	
Alex A		Cristian C	

Equipment:	
903-541	993-467
1080-842	

Well Information						
Open Hole Section						
Description:	Size (in):	Excess	Top MD (ft)	Btm MD (ft)		
OPEN HOLE	12 1/4	110%	1415	1,650	TAIL CEMENT	
OPEN HOLE	12 1/4	110%	0	1,415	LEAD CEMENT	
OPEN HOLE	12 1/4			0		
OPEN HOLE	12 1/4					
Tubulars						
Description:	Size (in):	Wgt. (lb/ft)	ID (in)	Grade:	Top MD (ft)	Btm MD (ft)
TOTAL CASING	8 5/8	24	8.097	J-55	0	1,650
SHOE	8 5/8	24	8.097	J-55	1,608	1,650

Materials - Pumping Schedule						
Fluid Name	Description	Rqstd Qty	Density	Yield	Water (gal/sk)	
Spacer 1	Fresh Water	10	8.33	n/a	n/a	
Fluid Name	Description	Rqstd Qty	Density	Yield	Water (gal/sk)	
Lead 1	ALLIED MULTI-DENSITY CEMENT - CLASS A	425	12.10	2.55	14.86	
Addl. Additive	Description	Conc. (lb/sk)	Determined by	Load Volume	UOM	
CA-100	CALCIUM CHLORIDE, PELLETS OR FLAKE	2.82	% BWOC	1198.5	lbm	
CLC-CPF	CELLOPHANE FLAKES	0.5	lb/sk	212.5	lbm	
Fluid Name	Description	Rqstd Qty	Density	Yield	Water (gal/sk)	
Tail 1	CLASS A COMMON	175	15.20	1.27	5.74	
Addl. Additive	Description	Conc. (lb/sk)	Determined by	Load Volume	UOM	
CA-100	CALCIUM CHLORIDE, PELLETS OR FLAKE	1.88	% BWOC	329.0	lbm	
CLC-CPF	CELLOPHANE FLAKES	0.5	lb/sk	87.5	lbm	
Fluid Name	Description	Rqstd Qty	Density	Yield	Water (gal/sk)	
Disp. 1	Displacement	102.4031641	8.33	n/a	n/a	

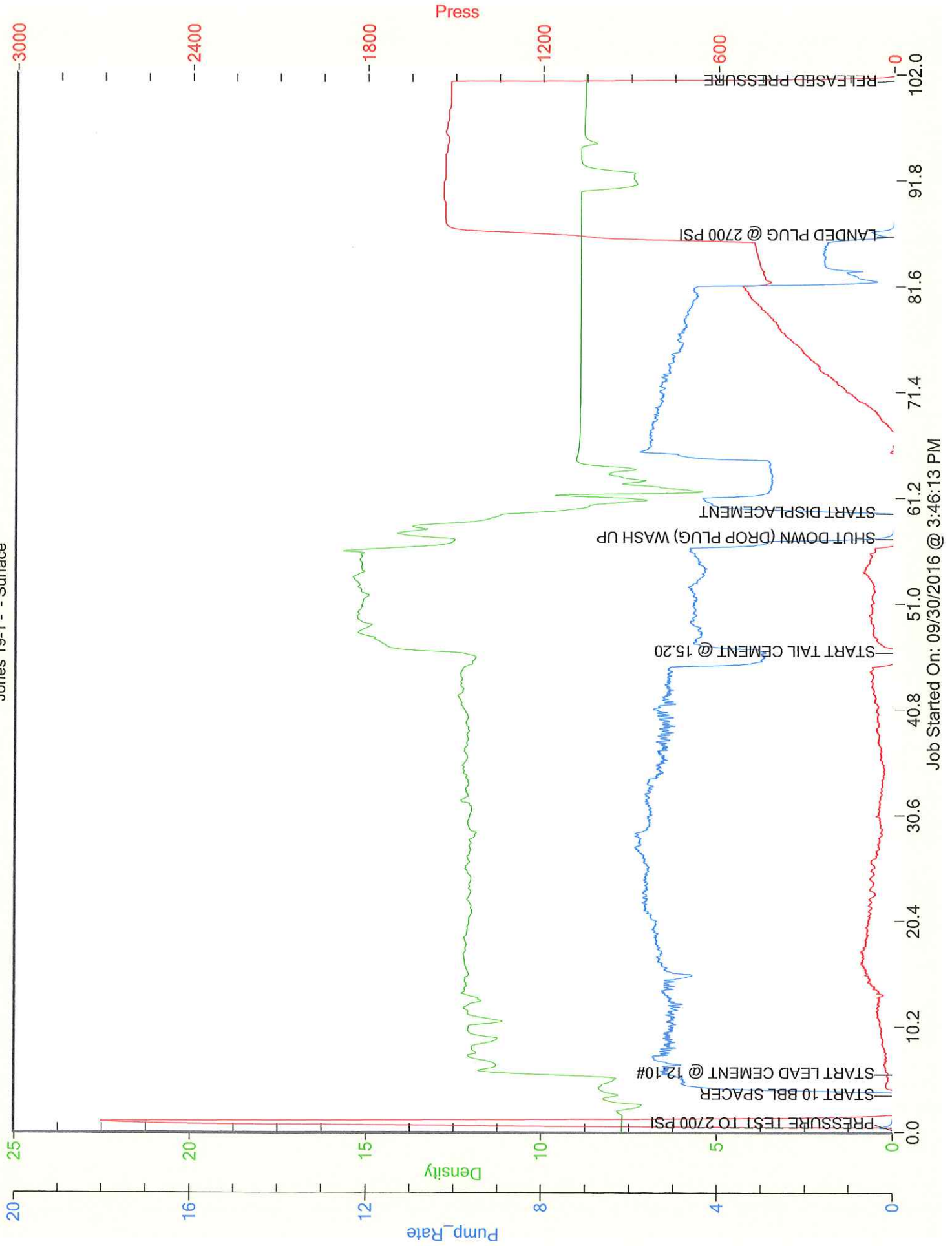
Job Number: Lib1609301708		Job Purpose 01 Surface	
Customer: MERIT ENERGY COMPANY	Date: 9/30/2016		
Well Name: Jones	Number: 19-1	API/UWI:	
County: 0	City:	State: KS	
Cust. Rep:	Phone:	Rig Phone: 0	
Distance 50 miles (one way)	Supervisor	Hector Esqueda	

Cement Job Summary

TIME	PRESSURE - (PSI)		FLUID PUMPED DATA		COMMENTS
AM/PM	CASING	ANNULUS	VOLUME	RATE (BPM)	
12:30					arrived to location
13:45					rig up iron
14:15					prime up
15:42	2700				pressure test to 2700PSI
15:45	0		10	4.5	start 10 bbl spacer
15:47	0		193	5.5	start lead cement @ 12.10#
16:27	20		39	5	start tail cement @ 15.20#
16:38					shut down (drop plug) wash up tub
16:41	0		102	4	start the 102bbl displacement
16:47	0		20	5.5	20 bbls gone
16:49	0		30	5.5	30 bbls gone
16:55	260		60	5.1	60 bbls gone
17:01	490		90	4.3	90 bbls gone
17:08	1500		102		landed plug @ 1500PSI (shut down)
					hold pressure for 15 minutes to test the casing.
17:23					released pressure and the plug held good got 1/2 bbl back to tank
					rig down iron, head, and manifold
					released from location 18:30

Merit Energy Company

Jones 19-1 - Surface



Job Started On: 09/30/2016 @ 3:46:13 PM



Company Name:

MERIT ENERGY COMPANY

Lease Name:

Jones # 19-1

County

State

KS

Water Source:

TANK

Submitted By:

Date:

Hector Esqueda

9/30/2016

pH Level

7

Must be less than 8.5

Sulfates

400

Must be less than 1,000 PPM

Chlorides

0

Must be less than 3,000 PPM

Temperature

64

COMMENTS

Thank You

Customer Signature

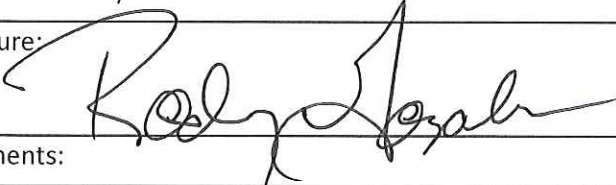
A handwritten signature in black ink, appearing to read 'Ray J. [unclear]', written over a horizontal line.



Customer: MERIT ENERGY COMPANY
Date: Friday, September 30, 2016
Well Name: Jones # 19-1
Well Location:
Supervisor: Hector Esqueda

Equipment Operators: Carlos I, Cristian C, and Alex A.

Performance	Customer	
Was the appearance of the personnel and equipment satisfactory?	Yes	No
Was the job performed in a professional manner?	Yes	No
Were the calculations prepared and explained properly?	Yes	No
Were the correct services dispatched to the job site?	Yes	No
Were the services performed as requested?	Yes	No
Did the job site environment remain unchanged?	Yes	No
Did the equipment perform in the manner expected?	Yes	No
Did the materials meet your expectations?	Yes	No
Was the crew prepared for the job?	Yes	No
Was the crew prompt in the rig-up and actual job?	Yes	No
Were reasonable recommendations given, as requested?	Yes	No
Did the crew perform safely?	Yes	No
Was the job performed to your satisfaction?	Yes	No

Customer Signature:  Date: 9-30-16

Additional Comments:
