



## DRILL STEM TEST REPORT

Prepared For: **Blue Goose Drilling Company, Inc.**

PO Box 1413  
Great Bend, KS 67530

ATTN: Ken Wallace

### **Neeley A #1**

#### **10-18S-27W Lane, KS**

Start Date: 2016.10.25 @ 12:21:08

End Date: 2016.10.25 @ 17:19:08

Job Ticket #: 61296                      DST #: 1

Trilobite Testing, Inc  
PO Box 362 Hays, KS 67601  
ph: 785-625-4778 fax: 785-625-5620

Printed: 2016.11.07 @ 16:11:51



**TRILOBITE  
TESTING, INC**

# DRILL STEM TEST REPORT

Blue Goose Drilling Company, Inc.

**10-18S-27W Lane, KS**

PO Box 1413  
Great Bend, KS 67530

**Neeley A #1**

Job Ticket: 61296

**DST#: 1**

ATTN: Ken Wallace

Test Start: 2016.10.25 @ 12:21:08

## GENERAL INFORMATION:

Formation: **LKC**

Deviated: No Whipstock: ft (KB)

Time Tool Opened: 13:58:08

Time Test Ended: 17:19:08

Test Type: Conventional Bottom Hole (Initial)

Tester: Paul Simpson

Unit No:

**Interval: 4204.00 ft (KB) To 4236.00 ft (KB) (TVD)**

Reference Elevations: 2689.00 ft (KB)

Total Depth: 4236.00 ft (KB) (TVD)

2679.00 ft (CF)

Hole Diameter: 7.88 inches Hole Condition: Good

KB to GR/CF: 10.00 ft

**Serial #: 8959 Outside**

Press@RunDepth: 25.29 psig @ 4205.00 ft (KB)

Capacity: 8000.00 psig

Start Date: 2016.10.25

End Date:

2016.10.25

Last Calib.: 1899.12.30

Start Time: 12:21:09

End Time:

17:19:08

Time On Btm: 2016.10.25 @ 13:57:08

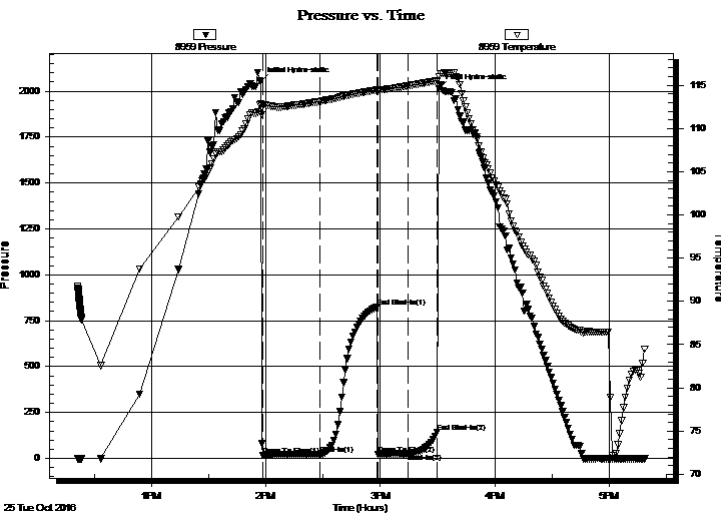
Time Off Btm: 2016.10.25 @ 15:30:38

TEST COMMENT: IF- 30 weak 1.4" blow died in 25 minutes

ISI-30

FF-15 no blow

FSI 15



## PRESSURE SUMMARY

Time (Min.)	Pressure (psig)	Temp (deg F)	Annotation
0	2053.98	112.88	Initial Hydro-static
1	17.73	112.70	Open To Flow (1)
31	22.47	113.11	Shut-In(1)
61	824.17	114.47	End Shut-In(1)
62	23.83	114.24	Open To Flow (2)
78	25.29	114.94	Shut-In(2)
93	140.94	115.55	End Shut-In(2)
94	2014.82	115.96	Final Hydro-static

## Recovery

Length (ft)	Description	Volume (bbl)
15.00	OSM 3% oil 97% mud	0.21

## Gas Rates

	Choke (inches)	Pressure (psig)	Gas Rate (Mcf/d)





**TRILOBITE  
TESTING, INC**

# DRILL STEM TEST REPORT

**TOOL DIAGRAM**

Blue Goose Drilling Company, Inc.

**10-18S-27W Lane, KS**

PO Box 1413  
Great Bend, KS 67530

**Neeley A #1**

Job Ticket: 61296

**DST#: 1**

ATTN: Ken Wallace

Test Start: 2016.10.25 @ 12:21:08

## Tool Information

Drill Pipe:	Length: 4186.00 ft	Diameter: 3.80 inches	Volume: 58.72 bbl	Tool Weight: 2800.00 lb
Heavy Wt. Pipe:	Length: 0.00 ft	Diameter: 0.00 inches	Volume: 0.00 bbl	Weight set on Packer: 22000.00 lb
Drill Collar:	Length: 0.00 ft	Diameter: 0.00 inches	Volume: 0.00 bbl	Weight to Pull Loose: lb
			<u>Total Volume: 58.72 bbl</u>	Tool Chased ft
Drill Pipe Above KB:	9.00 ft			String Weight: Initial 42000.00 lb
Depth to Top Packer:	4204.00 ft			Final lb
Depth to Bottom Packer:	ft			
Interval between Packers:	32.00 ft			
Tool Length:	59.00 ft			
Number of Packers:	2	Diameter: 6.75 inches		
Tool Comments:				

## Tool Description

Tool Description	Length (ft)	Serial No.	Position	Depth (ft)	Accum. Lengths
Change Over Sub	1.00			4178.00	
Shut In Tool	5.00			4183.00	
Hydraulic tool	5.00			4188.00	
Jars	5.00			4193.00	
Safety Joint	2.00			4195.00	
Packer	5.00			4200.00	27.00 Bottom Of Top Packer
Packer	4.00			4204.00	
Stubb	1.00			4205.00	
Recorder	0.00	6651	Inside	4205.00	
Recorder	0.00	8959	Outside	4205.00	
Perforations	28.00			4233.00	
Bullnose	3.00			4236.00	32.00 Bottom Packers & Anchor

**Total Tool Length: 59.00**



**TRILOBITE  
TESTING, INC**

# DRILL STEM TEST REPORT

**FLUID SUMMARY**

Blue Goose Drilling Company, Inc.

**10-18S-27W Lane, KS**

PO Box 1413  
Great Bend, KS 67530

**Neeley A #1**

Job Ticket: 61296

**DST#: 1**

ATTN: Ken Wallace

Test Start: 2016.10.25 @ 12:21:08

## Mud and Cushion Information

Mud Type: Gel Chem

Cushion Type:

Oil API:

deg API

Mud Weight: 9.00 lb/gal

Cushion Length:

ft

Water Salinity:

ppm

Viscosity: 50.00 sec/qt

Cushion Volume:

bbbl

Water Loss: 8.37 in<sup>3</sup>

Gas Cushion Type:

Resistivity: ohm.m

Gas Cushion Pressure:

psig

Salinity: ppm

Filter Cake: inches

## Recovery Information

Recovery Table

Length ft	Description	Volume bbl
15.00	OSM 3% oil 97% mud	0.210

Total Length: 15.00 ft      Total Volume: 0.210 bbl

Num Fluid Samples: 0

Num Gas Bombs: 0

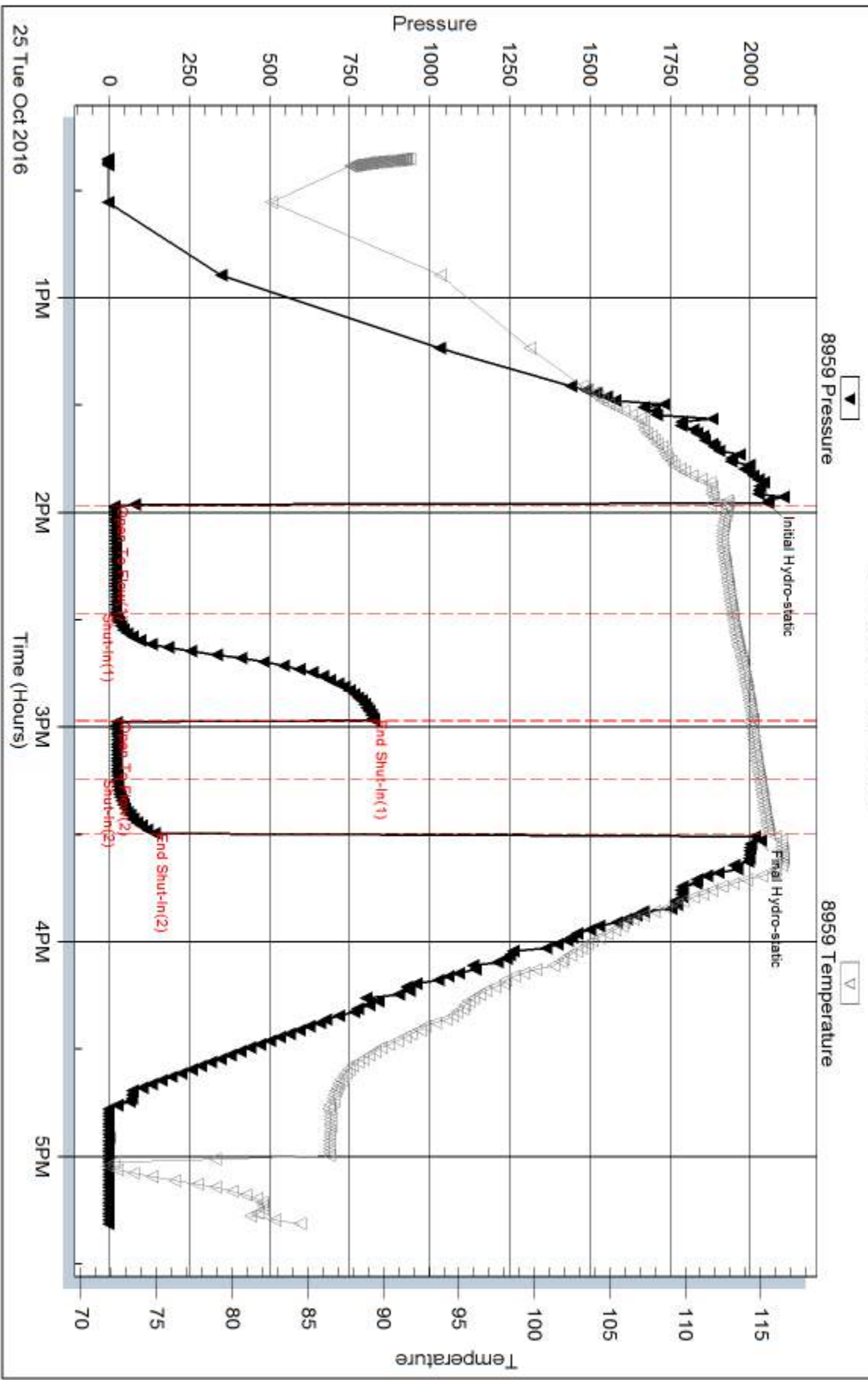
Serial #:

Laboratory Name:

Laboratory Location:

Recovery Comments:

### Pressure vs. Time



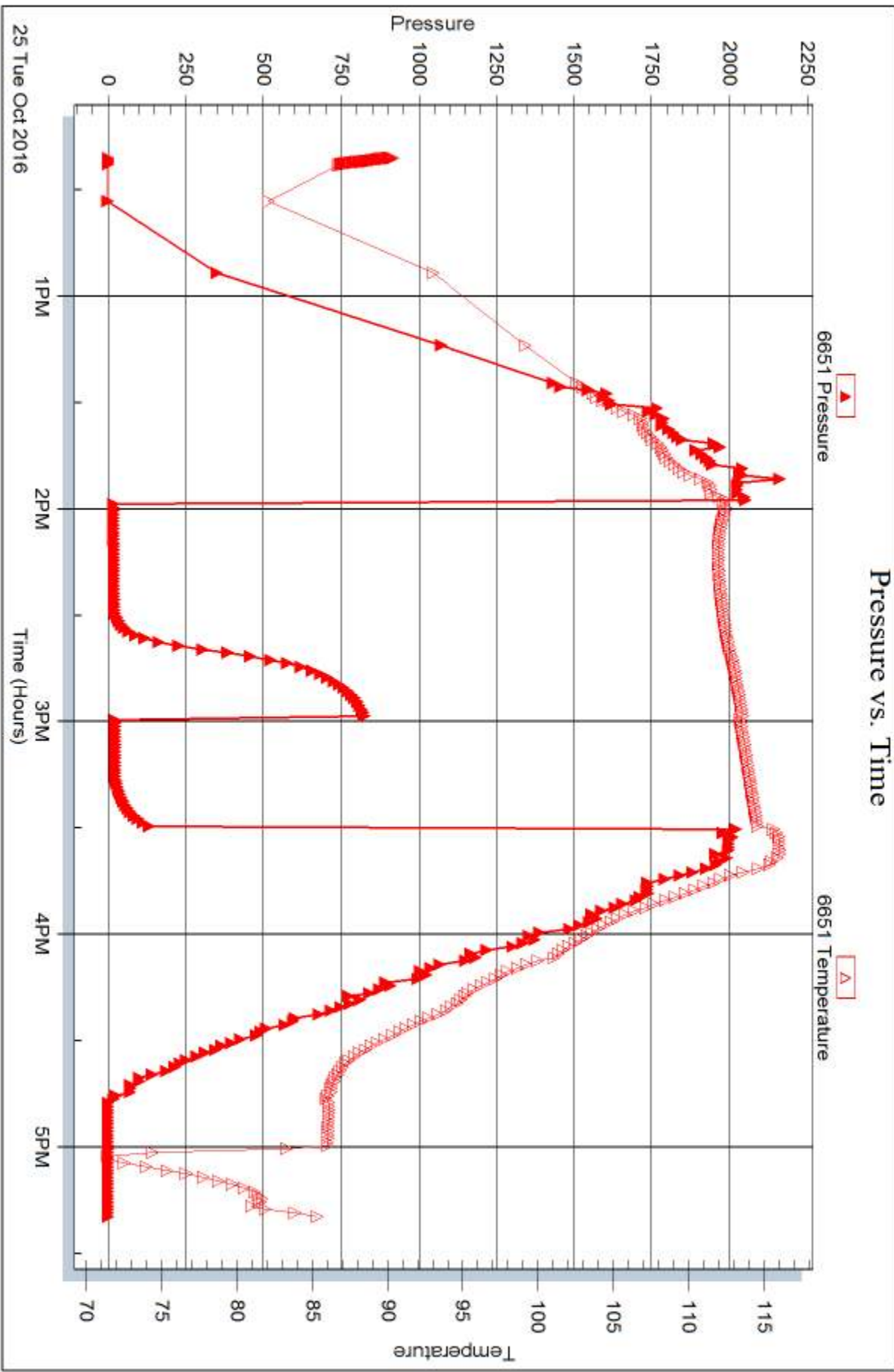
Serial #: 6651

Inside

Blue Goose Drilling Company, Inc.

Neeley A #1

DST Test Number: 1



Triobite Testing, Inc

Ref. No: 61296

Printed: 2016.11.07 @ 16:11:53



## DRILL STEM TEST REPORT

Prepared For: **Blue Goose Drilling Company, Inc.**

PO Box 1413  
Great Bend, KS 67530

ATTN: Ken Wallace

**Neeley A #1**

**10-18S-27W Lane, KS**

Start Date: 2016.10.26 @ 03:59:08

End Date: 2016.10.26 @ 11:33:38

Job Ticket #: 61297                      DST #: 2

Trilobite Testing, Inc

PO Box 362 Hays, KS 67601

ph: 785-625-4778 fax: 785-625-5620

Printed: 2016.11.07 @ 16:11:27





**TRILOBITE  
TESTING, INC**

# DRILL STEM TEST REPORT

Blue Goose Drilling Company, Inc.

**10-18S-27W Lane, KS**

PO Box 1413  
Great Bend, KS 67530

**Neeley A #1**

Job Ticket: 61297

**DST#: 2**

ATTN: Ken Wallace

Test Start: 2016.10.26 @ 03:59:08

## GENERAL INFORMATION:

Formation: **LKC "L"**

Deviated: No Whipstock: ft (KB)

Time Tool Opened: 06:23:08

Time Test Ended: 11:33:38

Test Type: Conventional Bottom Hole (Reset)

Tester: Brannan Lonsdale

Unit No: 73

**Interval: 4225.00 ft (KB) To 4297.00 ft (KB) (TVD)**

Reference Elevations: 2689.00 ft (KB)

Total Depth: 4297.00 ft (KB) (TVD)

2679.00 ft (CF)

Hole Diameter: 7.88 inches Hole Condition: Fair

KB to GR/CF: 10.00 ft

**Serial #: 8959 Outside**

Press@RunDepth: 247.20 psig @ 4226.00 ft (KB)

Capacity: 8000.00 psig

Start Date: 2016.10.26

End Date:

2016.10.26

Last Calib.:

2016.10.26

Start Time: 03:59:09

End Time:

11:33:38

Time On Btm:

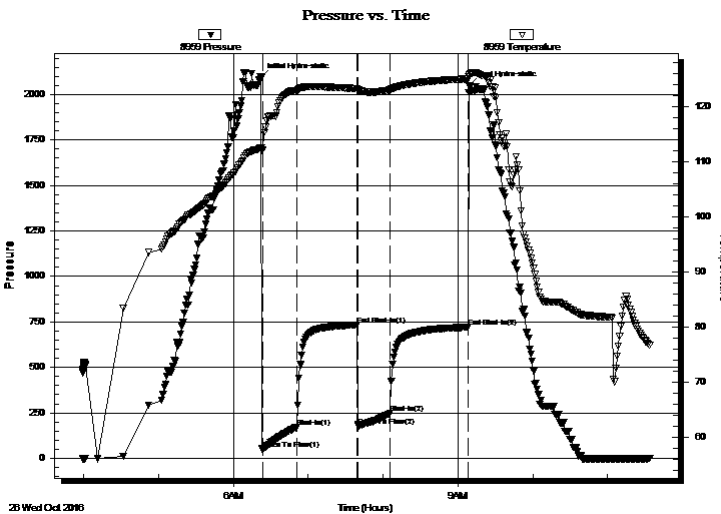
2016.10.26 @ 06:22:08

Time Off Btm:

2016.10.26 @ 09:09:08

**TEST COMMENT:** 30- IF- BOB 3 mins  
45- IS- Surface blow  
30- FF- BOB 7 mins  
60- FS- Slow ly built to 1 1/2"

## PRESSURE SUMMARY



Time (Min.)	Pressure (psig)	Temp (deg F)	Annotation
0	2091.17	112.54	Initial Hydro-static
1	50.96	111.96	Open To Flow (1)
29	172.06	122.89	Shut-In(1)
77	733.58	123.25	End Shut-In(1)
78	179.37	122.95	Open To Flow (2)
104	247.20	123.00	Shut-In(2)
166	721.40	124.96	End Shut-In(2)
167	2048.84	125.65	Final Hydro-static

## Recovery

Length (ft)	Description	Volume (bbl)
126.00	WOCM, 20%O 35%W 45%M	1.79
347.00	VGWMCO, 40%G 30%O 15%W 15%M	4.92
100.00	CGO, 20%G 80%O	1.42
0.00	1067' GIP	0.00

\* Recovery from multiple tests

## Gas Rates

	Choke (inches)	Pressure (psig)	Gas Rate (Mcf/d)





**TRILOBITE  
TESTING, INC**

# DRILL STEM TEST REPORT

**TOOL DIAGRAM**

Blue Goose Drilling Company, Inc.

**10-18S-27W Lane, KS**

PO Box 1413  
Great Bend, KS 67530

**Neeley A #1**

Job Ticket: 61297

**DST#: 2**

ATTN: Ken Wallace

Test Start: 2016.10.26 @ 03:59:08

## Tool Information

Drill Pipe:	Length: 4208.00 ft	Diameter: 3.82 inches	Volume: 59.65 bbl	Tool Weight: 2800.00 lb
Heavy Wt. Pipe:	Length: 0.00 ft	Diameter: 0.00 inches	Volume: 0.00 bbl	Weight set on Packer: 25000.00 lb
Drill Collar:	Length: 0.00 ft	Diameter: 2.25 inches	Volume: 0.00 bbl	Weight to Pull Loose: 47000.00 lb
			<u>Total Volume: 59.65 bbl</u>	Tool Chased 0.00 ft
Drill Pipe Above KB:	10.00 ft			String Weight: Initial 42000.00 lb
Depth to Top Packer:	4225.00 ft			Final 45000.00 lb
Depth to Bottom Packer:	ft			
Interval between Packers:	72.00 ft			
Tool Length:	99.00 ft			
Number of Packers:	2	Diameter: 6.75 inches		

Tool Comments:

## Tool Description

Tool Description	Length (ft)	Serial No.	Position	Depth (ft)	Accum. Lengths
Change Over Sub	1.00			4199.00	
Shut In Tool	5.00			4204.00	
Hydraulic tool	5.00			4209.00	
Jars	5.00			4214.00	
Safety Joint	2.00			4216.00	
Packer	5.00			4221.00	27.00 Bottom Of Top Packer
Packer	4.00			4225.00	
Stubb	1.00			4226.00	
Recorder	0.00	6651	Inside	4226.00	
Recorder	0.00	8959	Outside	4226.00	
Perforations	4.00			4230.00	
Change Over Sub	1.00			4231.00	
Drill Pipe	62.00			4293.00	
Change Over Sub	1.00			4294.00	
Bullnose	3.00			4297.00	72.00 Bottom Packers & Anchor

**Total Tool Length: 99.00**



**TRILOBITE  
TESTING, INC**

# DRILL STEM TEST REPORT

**FLUID SUMMARY**

Blue Goose Drilling Company, Inc.

**10-18S-27W Lane, KS**

PO Box 1413  
Great Bend, KS 67530

**Neeley A #1**

Job Ticket: 61297

**DST#: 2**

ATTN: Ken Wallace

Test Start: 2016.10.26 @ 03:59:08

## Mud and Cushion Information

Mud Type: Gel Chem

Cushion Type:

Oil API:

37 deg API

Mud Weight: 9.00 lb/gal

Cushion Length:

ft

Water Salinity:

63000 ppm

Viscosity: 50.00 sec/qt

Cushion Volume:

bbbl

Water Loss: 8.37 in<sup>3</sup>

Gas Cushion Type:

Resistivity: ohm.m

Gas Cushion Pressure:

psig

Salinity: 4000.00 ppm

Filter Cake: inches

## Recovery Information

Recovery Table

Length ft	Description	Volume bbbl
126.00	WOCM, 20%O 35%W 45%M	1.786
347.00	VGWMCO, 40%G 30%O 15%W 15%M	4.919
100.00	CGO, 20%G 80%O	1.418
0.00	1067' GIP	0.000

Total Length: 573.00 ft

Total Volume: 8.123 bbl

Num Fluid Samples: 0

Num Gas Bombs: 0

Serial #:

Laboratory Name:

Laboratory Location:

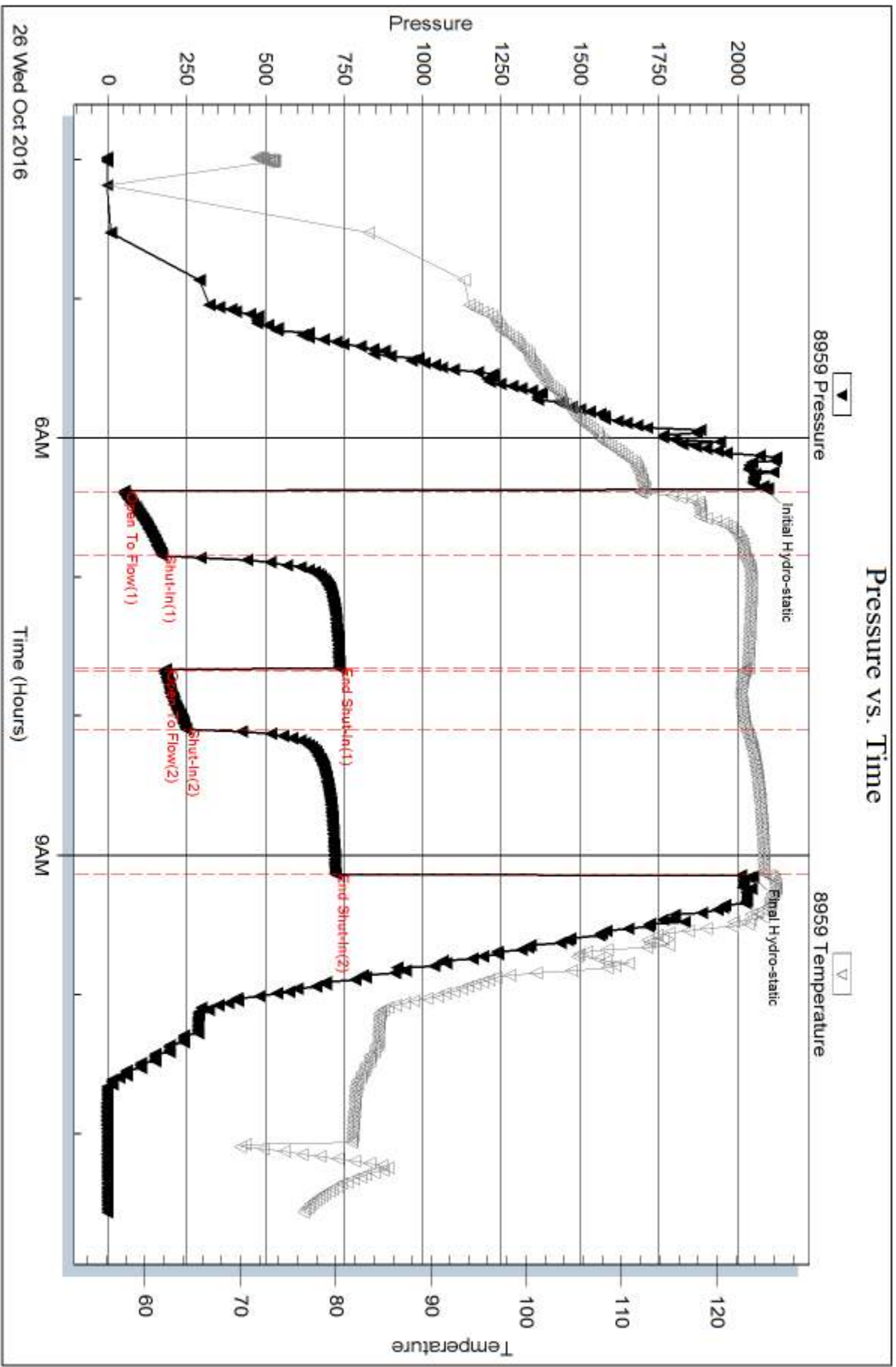
Recovery Comments: RW: .12@62deg

Serial #: 8959

Outside Blue Goose Drilling Company, Inc.

Neeley A #1

DST Test Number: 2



Trilobite Testing, Inc

Ref. No: 61297

Printed: 2016.11.07 @ 16:11:28

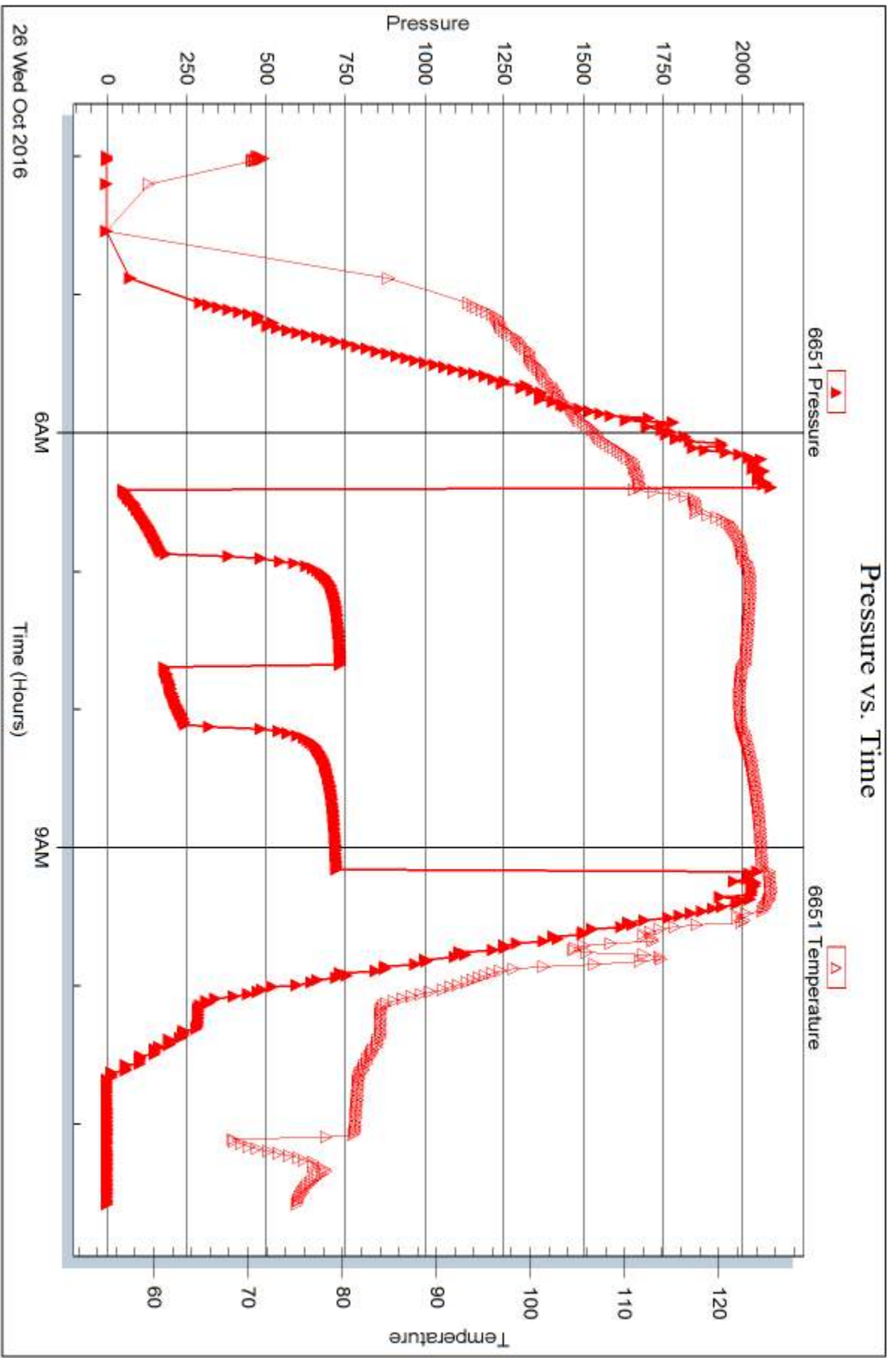
Serial #: 6651

Inside

Blue Goose Drilling Company, Inc.

Neeley A #1

DST Test Number: 2



Trilobite Testing, Inc

Ref. No: 61297

Printed: 2016.11.07 @ 16:11:28



## DRILL STEM TEST REPORT

Prepared For: **Blue Goose Drilling Company, Inc.**

PO Box 1413  
Great Bend, KS 67530

ATTN: Ken Wallace

**Neeley A #1**

**10-18S-27W Lane, KS**

Start Date: 2016.11.04 @ 07:40:00

End Date: 2016.11.04 @ 14:27:00

Job Ticket #: 61950                      DST #: 3

Trilobite Testing, Inc

PO Box 362 Hays, KS 67601

ph: 785-625-4778 fax: 785-625-5620

Printed: 2016.11.07 @ 16:11:04



**TRILOBITE TESTING, INC.**

# DRILL STEM TEST REPORT

Blue Goose Drilling Company, Inc.

**10-18S-27W Lane, KS**

PO Box 1413  
Great Bend, KS 67530

**Neeley A #1**

Job Ticket: 61950

**DST#: 3**

ATTN: Ken Wallace

Test Start: 2016.11.04 @ 07:40:00

## GENERAL INFORMATION:

Formation: **Pleasanton**

Deviated: No Whipstock: ft (KB)

Time Tool Opened: 09:46:00

Time Test Ended: 14:27:00

Test Type: Conventional Bottom Hole (Initial)

Tester: Ken Swinney

Unit No: 72

**Interval: 4309.00 ft (KB) To 4336.00 ft (KB) (TVD)**

Reference Elevations: 2689.00 ft (KB)

Total Depth: 4336.00 ft (KB) (TVD)

2679.00 ft (CF)

Hole Diameter: 7.88 inches Hole Condition: Fair

KB to GR/CF: 10.00 ft

**Serial #: 6999 Inside**

Press@RunDepth: 27.73 psig @ 4332.00 ft (KB)

Capacity: 8000.00 psig

Start Date: 2016.11.04

End Date:

2016.11.04

Last Calib.:

2016.11.04

Start Time: 07:40:05

End Time:

14:26:59

Time On Btm:

2016.11.04 @ 09:45:30

Time Off Btm:

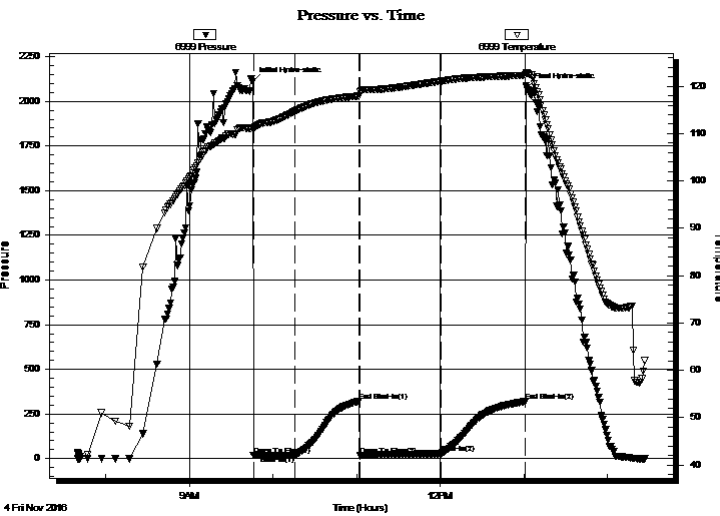
2016.11.04 @ 13:02:00

TEST COMMENT: IFP 30 minutes Blow built to 3 1/2"

ISI 45 minutes No blow back

FFP 60 minutes Blow built to 11"

FSI 60 minutes No blow back



## PRESSURE SUMMARY

Time (Min.)	Pressure (psig)	Temp (deg F)	Annotation
0	2110.36	111.13	Initial Hydro-static
1	19.82	110.79	Open To Flow (1)
31	19.84	114.73	Shut-In(1)
76	320.90	117.90	End Shut-In(1)
77	16.68	118.77	Open To Flow (2)
135	27.73	121.07	Shut-In(2)
196	319.08	122.33	End Shut-In(2)
197	2077.14	122.76	Final Hydro-static

## Recovery

Length (ft)	Description	Volume (bbl)
30.00	Emulsified Oil	0.42
0.00	150 Gas in pipe	0.00

## Gas Rates

	Choke (inches)	Pressure (psig)	Gas Rate (Mcf/d)





**TRILOBITE  
TESTING, INC**

# DRILL STEM TEST REPORT

Blue Goose Drilling Company, Inc.

**10-18S-27W Lane, KS**

PO Box 1413  
Great Bend, KS 67530

**Neeley A #1**

Job Ticket: 61950

**DST#: 3**

ATTN: Ken Wallace

Test Start: 2016.11.04 @ 07:40:00

## GENERAL INFORMATION:

Formation: **Pleasanton**

Deviated: No Whipstock: ft (KB)

Time Tool Opened: 09:46:00

Time Test Ended: 14:27:00

Test Type: Conventional Bottom Hole (Initial)

Tester: Ken Swinney

Unit No: 72

**Interval: 4309.00 ft (KB) To 4336.00 ft (KB) (TVD)**

Reference Elevations: 2689.00 ft (KB)

Total Depth: 4336.00 ft (KB) (TVD)

2679.00 ft (CF)

Hole Diameter: 7.88 inches Hole Condition: Fair

KB to GR/CF: 10.00 ft

**Serial #: 8960 Outside**

Press@RunDepth: 318.58 psig @ 4333.00 ft (KB)

Capacity: 8000.00 psig

Start Date: 2016.11.04

End Date:

2016.11.04

Last Calib.:

2016.11.04

Start Time:

07:40:05

End Time:

14:26:29

Time On Btm:

2016.11.04 @ 09:45:00

Time Off Btm:

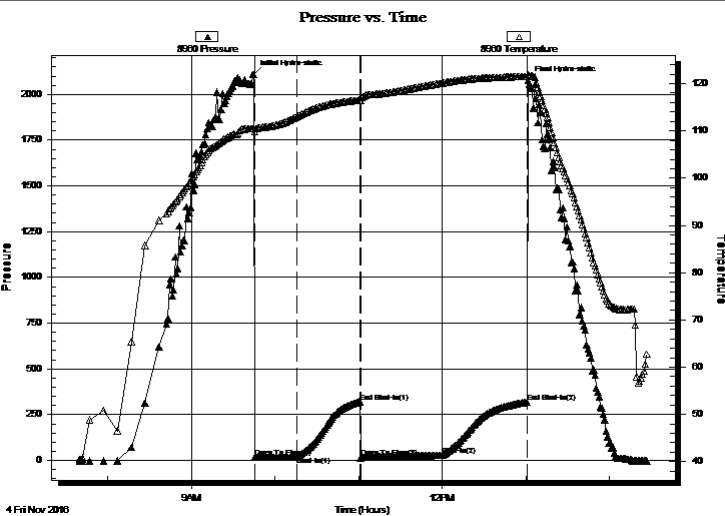
2016.11.04 @ 13:01:30

TEST COMMENT: IFP 30 minutes Blow built to 3 1/2"

ISI 45 minutes No blow back

FFP 60 minutes Blow built to 11"

FSI 60 minutes No blow back



## PRESSURE SUMMARY

Time (Min.)	Pressure (psig)	Temp (deg F)	Annotation
0	2107.95	110.54	Initial Hydro-static
1	16.96	109.82	Open To Flow (1)
31	19.24	113.04	Shut-In(1)
76	320.66	116.52	End Shut-In(1)
77	14.08	116.34	Open To Flow (2)
135	26.21	120.12	Shut-In(2)
196	318.58	121.51	End Shut-In(2)
197	2076.28	121.96	Final Hydro-static

## Recovery

Length (ft)	Description	Volume (bbl)
30.00	Emulsified Oil	0.42
0.00	150 Gas in pipe	0.00

## Gas Rates

	Choke (inches)	Pressure (psig)	Gas Rate (Mcf/d)



**TRILOBITE  
TESTING, INC**

# DRILL STEM TEST REPORT

**TOOL DIAGRAM**

Blue Goose Drilling Company, Inc.

**10-18S-27W Lane, KS**

PO Box 1413  
Great Bend, KS 67530

**Neeley A #1**

Job Ticket: 61950

**DST#: 3**

ATTN: Ken Wallace

Test Start: 2016.11.04 @ 07:40:00

## Tool Information

Drill Pipe:	Length: 4310.00 ft	Diameter: 3.80 inches	Volume: 60.46 bbl	Tool Weight: 2000.00 lb
Heavy Wt. Pipe:	Length: 0.00 ft	Diameter: 0.00 inches	Volume: 0.00 bbl	Weight set on Packer: 20000.00 lb
Drill Collar:	Length: 0.00 ft	Diameter: 0.00 inches	Volume: 0.00 bbl	Weight to Pull Loose: 58000.00 lb
			<u>Total Volume: 60.46 bbl</u>	Tool Chased 0.00 ft
Drill Pipe Above KB:	28.00 ft			String Weight: Initial 44000.00 lb
Depth to Top Packer:	4309.00 ft			Final 46000.00 lb
Depth to Bottom Packer:	ft			
Interval between Packers:	27.00 ft			
Tool Length:	54.00 ft			
Number of Packers:	2	Diameter: 6.75 inches		

Tool Comments:

Tool Description	Length (ft)	Serial No.	Position	Depth (ft)	Accum. Lengths
------------------	-------------	------------	----------	------------	----------------

Shut-In Tool	5.00			4287.00	
Hydraulic tool	5.00			4292.00	
Jars	5.00			4297.00	
Safety Joint	2.00			4299.00	
Top Packer	5.00			4304.00	
Packer	5.00			4309.00	27.00 Bottom Of Top Packer
Anchor	22.00			4331.00	
Recorder	1.00	6999	Inside	4332.00	
Recorder	1.00	8960	Outside	4333.00	
Bullnose	3.00			4336.00	27.00 Anchor Tool
<b>Total Tool Length:</b>	<b>54.00</b>				



**TRILOBITE  
TESTING, INC**

# DRILL STEM TEST REPORT

**FLUID SUMMARY**

Blue Goose Drilling Company, Inc.

**10-18S-27W Lane, KS**

PO Box 1413  
Great Bend, KS 67530

**Neeley A #1**

Job Ticket: 61950

**DST#: 3**

ATTN: Ken Wallace

Test Start: 2016.11.04 @ 07:40:00

## Mud and Cushion Information

Mud Type: Gel Chem

Cushion Type:

Oil API:

deg API

Mud Weight: 9.00 lb/gal

Cushion Length:

ft

Water Salinity:

ppm

Viscosity: 68.00 sec/qt

Cushion Volume:

bbbl

Water Loss: 7.19 in<sup>3</sup>

Gas Cushion Type:

Resistivity: ohm.m

Gas Cushion Pressure:

psig

Salinity: 6100.00 ppm

Filter Cake: inches

## Recovery Information

Recovery Table

Length ft	Description	Volume bbl
30.00	Emulsified Oil	0.421
0.00	150 Gas in pipe	0.000

Total Length: 30.00 ft      Total Volume: 0.421 bbl

Num Fluid Samples: 0

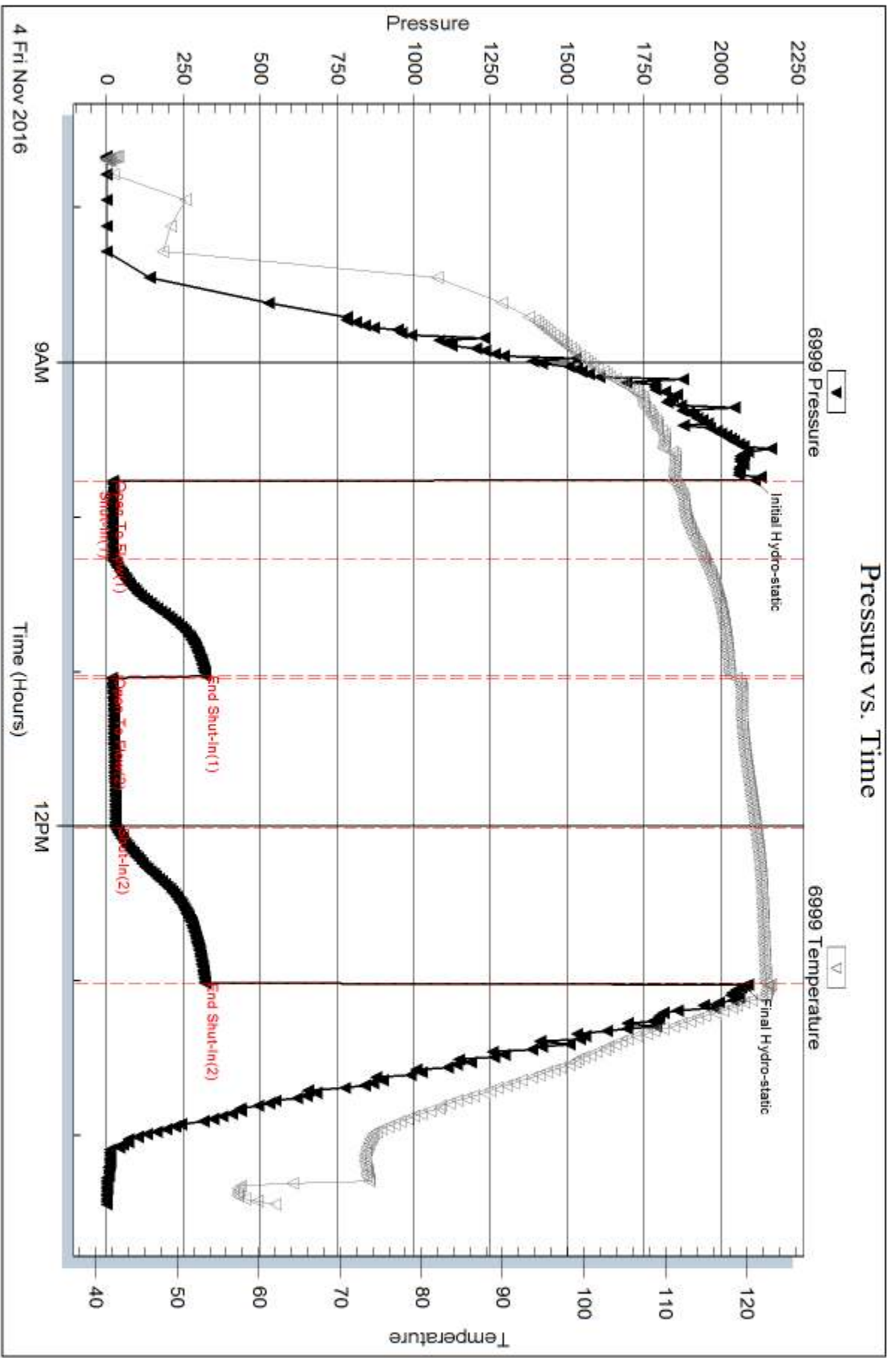
Num Gas Bombs: 0

Serial #:

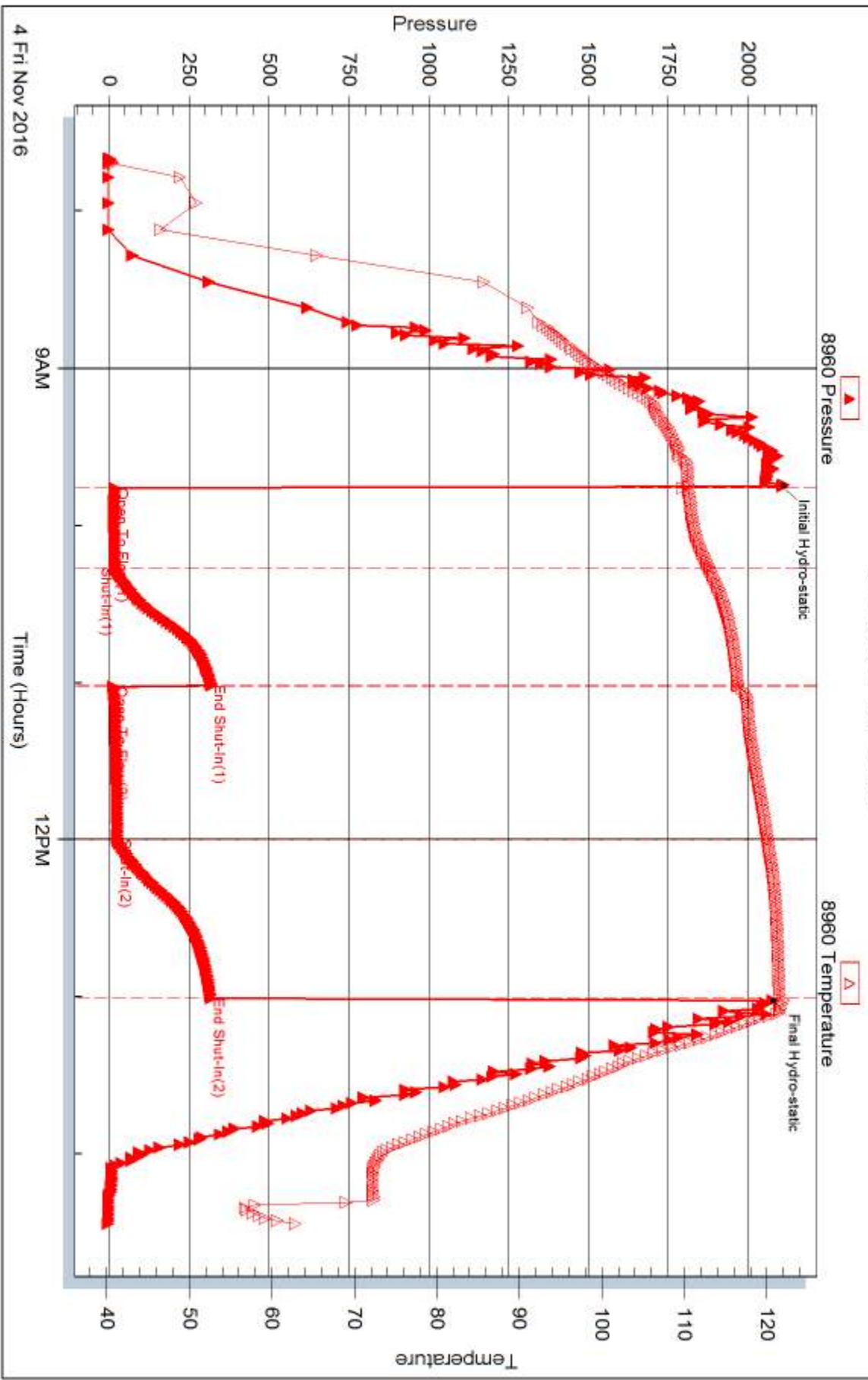
Laboratory Name:

Laboratory Location:

Recovery Comments:



### Pressure vs. Time





## DRILL STEM TEST REPORT

Prepared For: **Blue Goose Drilling Company, Inc.**

PO Box 1413  
Great Bend, KS 67530

ATTN: Ken Wallace

### **Neeley A #1**

#### **10-18S-27W Lane, KS**

Start Date: 2016.11.05 @ 13:01:00

End Date: 2016.11.05 @ 20:17:00

Job Ticket #: 63676                      DST #: 4

Trilobite Testing, Inc

PO Box 362 Hays, KS 67601

ph: 785-625-4778 fax: 785-625-5620

Printed: 2016.11.07 @ 16:09:48



**TRILOBITE  
TESTING, INC.**

# DRILL STEM TEST REPORT

Blue Goose Drilling Company, Inc.

**10-18S-27W Lane, KS**

PO Box 1413  
Great Bend, KS 67530

**Neeley A #1**

Job Ticket: 63676

**DST#: 4**

ATTN: Ken Wallace

Test Start: 2016.11.05 @ 13:01:00

## GENERAL INFORMATION:

Formation: **Fort Scott**

Deviated: No Whipstock: ft (KB)

Time Tool Opened: 14:33:30

Time Test Ended: 20:17:00

Test Type: Conventional Bottom Hole (Initial)

Tester: Ken Swinney

Unit No: 72

**Interval: 4474.00 ft (KB) To 4517.00 ft (KB) (TVD)**

Reference Elevations: 2689.00 ft (KB)

Total Depth: 4517.00 ft (KB) (TVD)

2679.00 ft (CF)

Hole Diameter: 7.88 inches Hole Condition: Fair

KB to GR/CF: 10.00 ft

**Serial #: 6999 Inside**

Press@RunDepth: 123.16 psig @ 4513.00 ft (KB)

Capacity: 8000.00 psig

Start Date: 2016.11.05

End Date:

2016.11.05

Last Calib.: 2016.11.05

Start Time: 13:01:05

End Time:

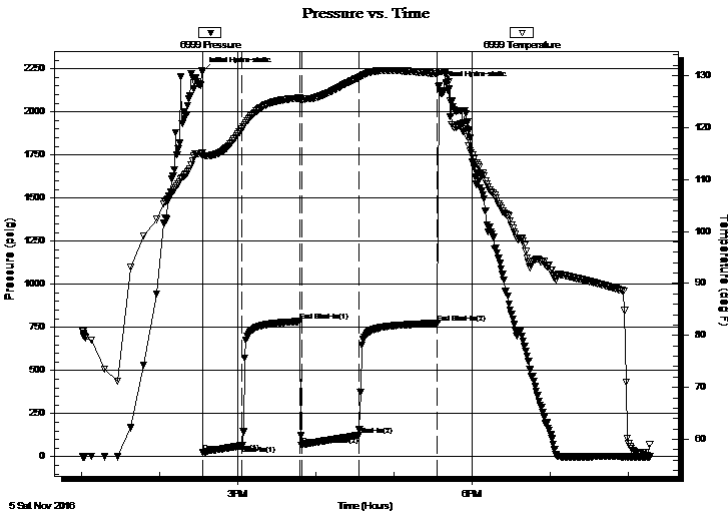
20:16:59

Time On Btm: 2016.11.05 @ 14:33:00

Time Off Btm: 2016.11.05 @ 17:35:00

TEST COMMENT: IFP 30 BOB in 24 minutes  
ISI 45 No blow back  
FFP 45 BOB in 27 minutes  
FSI 60 No blow back

## PRESSURE SUMMARY



Time (Min.)	Pressure (psig)	Temp (deg F)	Annotation
0	2234.43	115.15	Initial Hydro-static
1	23.82	114.61	Open To Flow (1)
31	64.98	119.76	Shut-In(1)
75	785.55	125.65	End Shut-In(1)
76	66.06	125.50	Open To Flow (2)
120	123.16	129.58	Shut-In(2)
181	774.37	130.35	End Shut-In(2)
182	2150.03	130.81	Final Hydro-static

## Recovery

Length (ft)	Description	Volume (bbl)
220.00	MW w / show of oil Mud 25% Water 75%	3.09
10.00	CO 100%	0.14
0.00	70 gas in pipe	0.00

## Gas Rates

Choke (inches)	Pressure (psig)	Gas Rate (Mcf/d)



**TRILOBITE  
TESTING, INC.**

# DRILL STEM TEST REPORT

Blue Goose Drilling Company, Inc.

**10-18S-27W Lane, KS**

PO Box 1413  
Great Bend, KS 67530

**Neeley A #1**

Job Ticket: 63676

**DST#: 4**

ATTN: Ken Wallace

Test Start: 2016.11.05 @ 13:01:00

## GENERAL INFORMATION:

Formation: **Fort Scott**

Deviated: No Whipstock: ft (KB)

Time Tool Opened: 14:33:30

Time Test Ended: 20:17:00

Test Type: Conventional Bottom Hole (Initial)

Tester: Ken Swinney

Unit No: 72

**Interval: 4474.00 ft (KB) To 4517.00 ft (KB) (TVD)**

Reference Elevations: 2689.00 ft (KB)

Total Depth: 4517.00 ft (KB) (TVD)

2679.00 ft (CF)

Hole Diameter: 7.88 inches Hole Condition: Fair

KB to GR/CF: 10.00 ft

**Serial #: 8960 Outside**

Press@RunDepth: 772.58 psig @ 4514.00 ft (KB)

Capacity: 8000.00 psig

Start Date: 2016.11.05

End Date:

2016.11.05

Last Calib.:

2016.11.05

Start Time: 13:01:05

End Time:

20:16:29

Time On Btm:

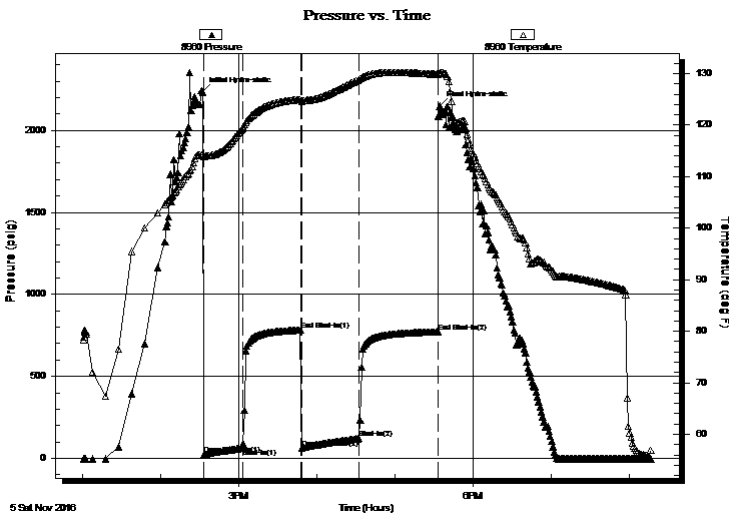
2016.11.05 @ 14:32:30

Time Off Btm:

2016.11.05 @ 17:34:30

TEST COMMENT: IFP 30 BOB in 24 minutes  
ISI 45 No blow back  
FFP 45 BOB in 27 minutes  
FSI 60 No blow back

## PRESSURE SUMMARY



Time (Min.)	Pressure (psig)	Temp (deg F)	Annotation
0	2233.39	114.45	Initial Hydro-static
1	22.41	113.96	Open To Flow (1)
31	63.50	119.38	Shut-In(1)
75	783.65	124.96	End Shut-In(1)
76	64.49	124.67	Open To Flow (2)
120	121.68	128.80	Shut-In(2)
181	772.58	129.83	End Shut-In(2)
182	2148.51	130.16	Final Hydro-static

## Recovery

Length (ft)	Description	Volume (bbl)
220.00	MW w / show of oil Mud 25% Water 75%	3.09
10.00	CO 100%	0.14
0.00	70 gas in pipe	0.00

## Gas Rates

Choke (inches)	Pressure (psig)	Gas Rate (Mcf/d)





**TRILOBITE  
TESTING, INC**

# DRILL STEM TEST REPORT

**TOOL DIAGRAM**

Blue Goose Drilling Company, Inc.

**10-18S-27W Lane, KS**

PO Box 1413  
Great Bend, KS 67530

**Neeley A #1**

Job Ticket: 63676

**DST#: 4**

ATTN: Ken Wallace

Test Start: 2016.11.05 @ 13:01:00

## Tool Information

Drill Pipe:	Length: 4470.00 ft	Diameter: 3.80 inches	Volume: 62.70 bbl	Tool Weight: 2000.00 lb
Heavy Wt. Pipe:	Length: 0.00 ft	Diameter: 0.00 inches	Volume: 0.00 bbl	Weight set on Packer: 20000.00 lb
Drill Collar:	Length: 0.00 ft	Diameter: 0.00 inches	Volume: 0.00 bbl	Weight to Pull Loose: 52000.00 lb
			<u>Total Volume: 62.70 bbl</u>	Tool Chased 0.00 ft
Drill Pipe Above KB:	23.00 ft			String Weight: Initial 45000.00 lb
Depth to Top Packer:	4474.00 ft			Final 47000.00 lb
Depth to Bottom Packer:	ft			
Interval between Packers:	43.00 ft			
Tool Length:	70.00 ft			
Number of Packers:	2	Diameter: 6.75 inches		

Tool Comments:

## Tool Description

Tool Description	Length (ft)	Serial No.	Position	Depth (ft)	Accum. Lengths
Shut-In Tool	5.00			4452.00	
Hydraulic tool	5.00			4457.00	
Jars	5.00			4462.00	
Safety Joint	2.00			4464.00	
Top Packer	5.00			4469.00	
Packer	5.00			4474.00	27.00 Bottom Of Top Packer
Anchor	38.00			4512.00	
Recorder	1.00	6999	Inside	4513.00	
Recorder	1.00	8960	Outside	4514.00	
Bullnose	3.00			4517.00	43.00 Anchor Tool
<b>Total Tool Length:</b>	<b>70.00</b>				



**TRILOBITE  
TESTING, INC**

# DRILL STEM TEST REPORT

## FLUID SUMMARY

Blue Goose Drilling Company, Inc.

**10-18S-27W Lane, KS**

PO Box 1413  
Great Bend, KS 67530

**Neeley A #1**

Job Ticket: 63676

**DST#: 4**

ATTN: Ken Wallace

Test Start: 2016.11.05 @ 13:01:00

### Mud and Cushion Information

Mud Type: Gel Chem  
Mud Weight: 9.00 lb/gal  
Viscosity: 56.00 sec/qt  
Water Loss: 8.78 in<sup>3</sup>  
Resistivity: ohm.m  
Salinity: 5800.00 ppm  
Filter Cake: 1.00 inches

Cushion Type:  
Cushion Length: ft  
Cushion Volume: bbl  
Gas Cushion Type:  
Gas Cushion Pressure: psig

Oil API: 38 deg API  
Water Salinity: 19000 ppm

### Recovery Information

Recovery Table

Length ft	Description	Volume bbl
220.00	MW w/ show of oil Mud 25% Water 75%	3.086
10.00	CO 100%	0.140
0.00	70 gas in pipe	0.000

Total Length: 230.00 ft Total Volume: 3.226 bbl

Num Fluid Samples: 0

Num Gas Bombs: 0

Serial #:

Laboratory Name:

Laboratory Location:

Recovery Comments: Recovery Resistivity .37 ohms @ 63 degrees

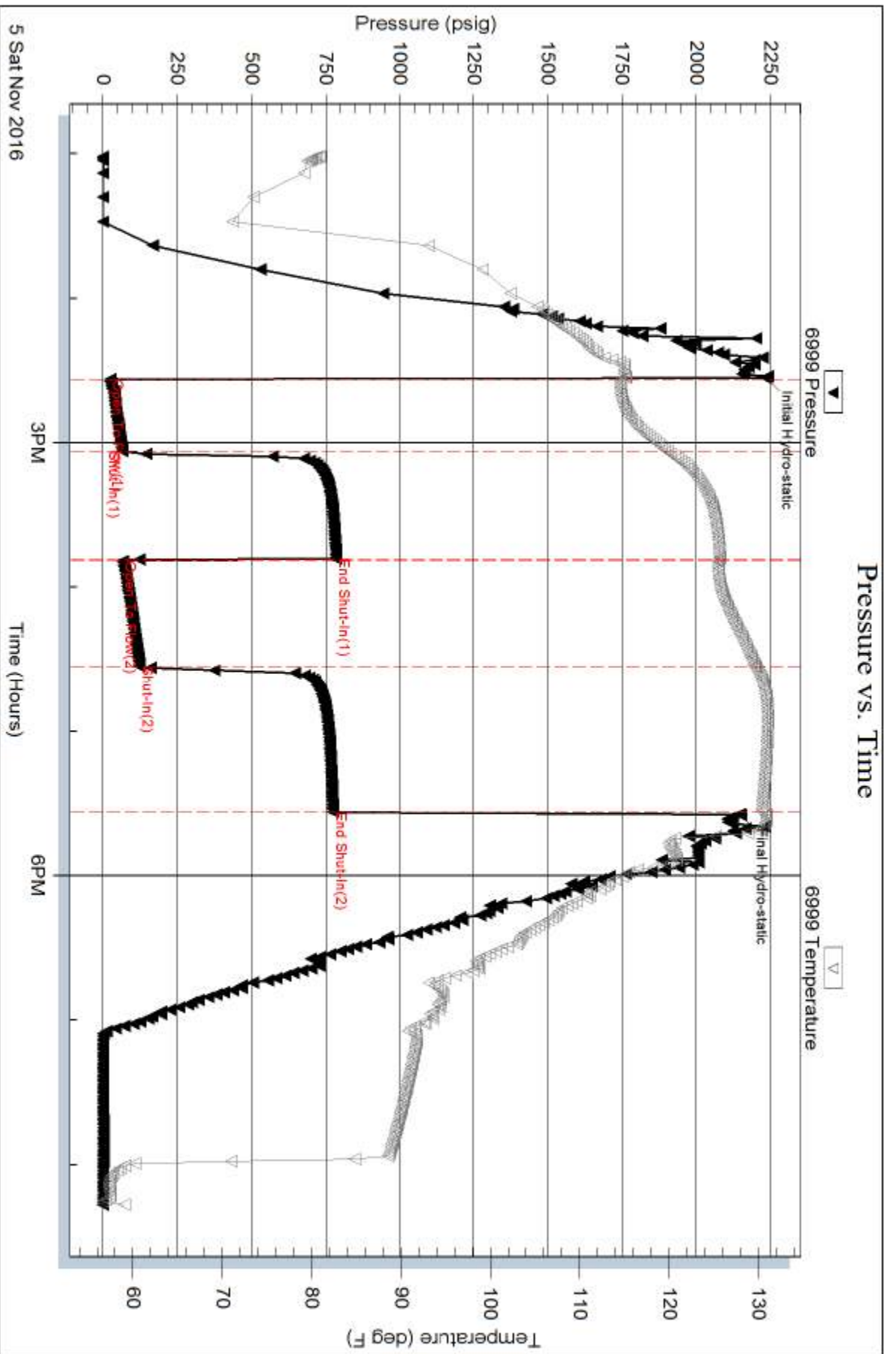
Serial #: 6999

Inside

Blue Goose Drilling Company, Inc.

Neeley A #1

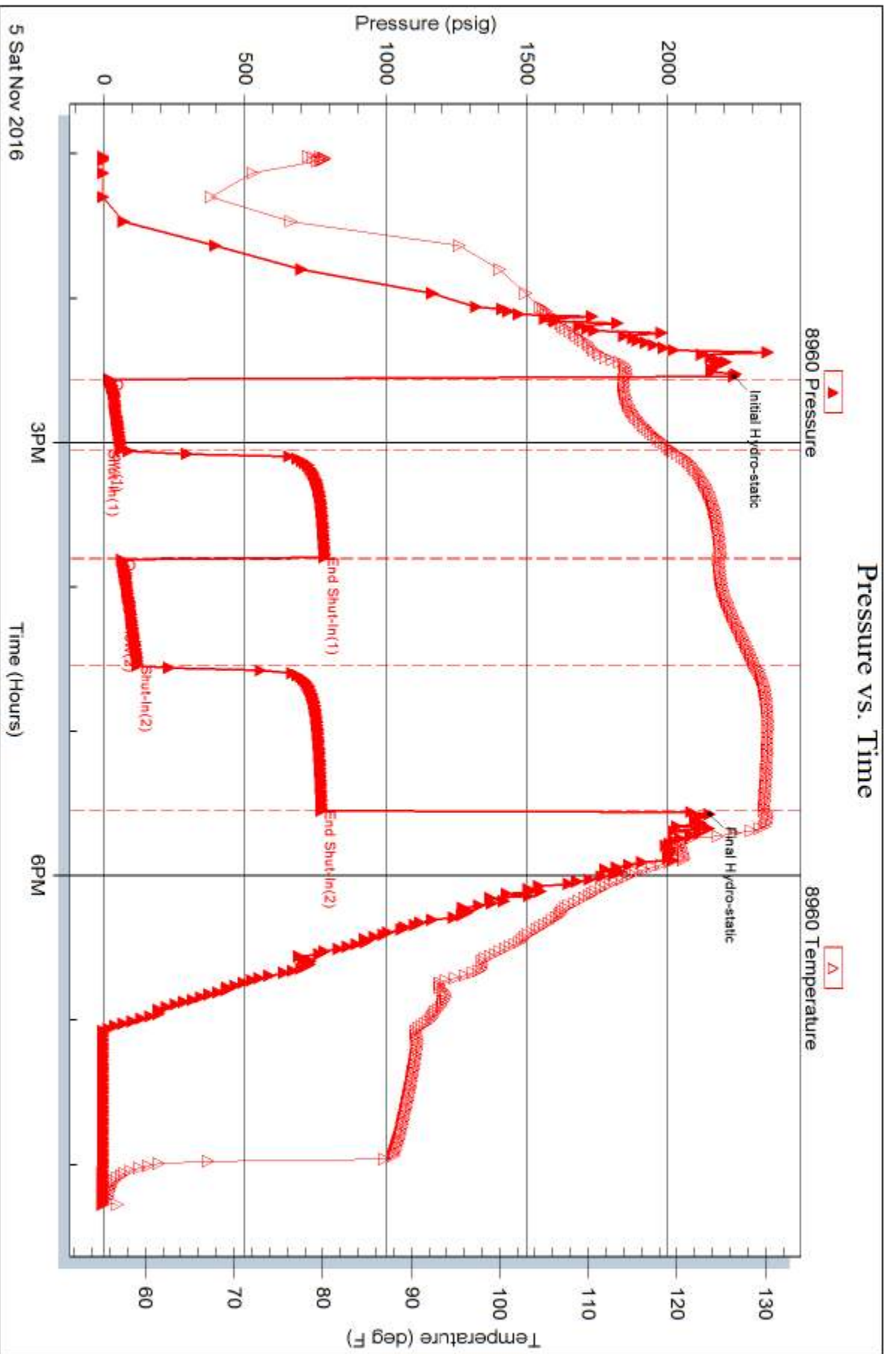
DST Test Number: 4

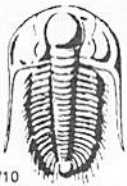


Trilobite Testing, Inc

Ref. No: 63676

Printed: 2016.11.07 @ 16:09:50





# TRILOBITE TESTING INC.

1515 Commerce Parkway • Hays, Kansas 67601

## Test Ticket

NO. 61296

Well Name & No. Neela A #1 Test No. 1 Date 10/25/16  
 Company Blue Cross Drilling Co Inc Elevation 2659 KB 2679 GL  
 Address Box 1413 Grand Bend KS  
 Co. Rep / Geo. Ken Wallace Rig South wind #1  
 Location: Sec. 10 Twp. 18S Rge. 27W Co. Love State KS

Interval Tested 4204-4236 Zone Tested L KC  
 Anchor Length 32 Drill Pipe Run 4156 Mud Wt. 9.3  
 Top Packer Depth 4209 Drill Collars Run \_\_\_\_\_ Vis 50  
 Bottom Packer Depth 4204 Wt. Pipe Run \_\_\_\_\_ WL 8.4  
 Total Depth 4236 Chlorides \_\_\_\_\_ ppm System LCM \_\_\_\_\_  
 Blow Description 30 Weck '14" blow died in 25 minutes  
30 - ISI noblow FF noblow  
~~ISI - noblow~~

Rec	Feet of	%gas	%oil	%water	%mud
<u>15</u>	<u>0.5M</u>		<u>3</u>		<u>7D</u>
Rec	Feet of	%gas	%oil	%water	%mud
Rec	Feet of	%gas	%oil	%water	%mud
Rec	Feet of	%gas	%oil	%water	%mud
Rec	Feet of	%gas	%oil	%water	%mud

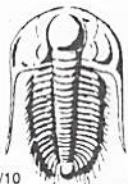
Rec Total \_\_\_\_\_ BHT \_\_\_\_\_ Gravity \_\_\_\_\_ API RW \_\_\_\_\_ @ \_\_\_\_\_ °F Chlorides \_\_\_\_\_ ppm

(A) Initial Hydrostatic 2053  Test 1150 T-On Location 1045  
 (B) First Initial Flow 18  Jars 250 T-Started 1221  
 (C) First Final Flow 22  Safety Joint 75 T-Open 1358  
 (D) Initial Shut-In 824  Circ Sub \_\_\_\_\_ T-Pulled 1528  
 (E) Second Initial Flow 24  Hourly Standby \_\_\_\_\_ T-Out \_\_\_\_\_  
 (F) Second Final Flow 25  Mileage ? South City 68rt 51 Comments \_\_\_\_\_  
 (G) Final Shut-In 141  Sampler \_\_\_\_\_  
 (H) Final Hydrostatic 2014  Straddle \_\_\_\_\_  Ruined Shale Packer \_\_\_\_\_  
 Shale Packer \_\_\_\_\_  Ruined Packer \_\_\_\_\_  
 Extra Packer \_\_\_\_\_  Extra Copies \_\_\_\_\_  
 Extra Recorder \_\_\_\_\_ Sub Total 0  
 Day Standby \_\_\_\_\_ Total 1526  
 Accessibility \_\_\_\_\_ MP/DST Disc't \_\_\_\_\_  
 Sub Total 1526

Approved By Ken Wallace Our Representative Paul Simpson

Trilobite Testing Inc. shall not be liable for damaged of any kind of the property or personnel of the one for whom a test is made, or for any loss suffered or sustained, directly or indirectly, through the use of its equipment, or its statements or opinion concerning the results of any test, tools lost or damaged in the hole shall be paid for at cost by the party for whom the test is made.





# TRILOBITE TESTING INC.

1515 Commerce Parkway • Hays, Kansas 67601

## Test Ticket

NO. 61297

4/10

Well Name & No. Neeley A Test No. 2 Date 10/26/16  
 Company Blue Coarse Drilling Company, Inc Elevation 2689 KB 2679 GL  
 Address PO Box 1413 Great Bend, KS 67530  
 Co. Rep / Geo. Ken Wallace Rig Southwind #1  
 Location: Sec. 10 Twp. 18 S Rge. 27 W Co. Lane State KS

Interval Tested 4225-4297 Zone Tested LKC "2"  
 Anchor Length 72' Drill Pipe Run 4208 Mud Wt. 9.3  
 Top Packer Depth 4220 Drill Collars Run — Vis 50  
 Bottom Packer Depth 4225 Wt. Pipe Run — WL 8.4  
 Total Depth 4297 Chlorides 4,000 ppm System LCM 1#

Blow Description IF- BOB 3 mins  
ISI- Surface blow  
FF- BOB 7 mins  
PSI- slowly built to 1 1/2"

Rec	Feet of	%gas	%oil	%water	%mud
<u>126</u>	<u>Feet of WOCM</u>	<u>20</u>	<u>35</u>	<u>45</u>	<u>—</u>
<u>347</u>	<u>Feet of VGMM10</u>	<u>40</u>	<u>30</u>	<u>15</u>	<u>15</u>
<u>100</u>	<u>Feet of GO</u>	<u>20</u>	<u>80</u>	<u>—</u>	<u>—</u>
<u>—</u>	<u>Feet of 1067' CIP</u>	<u>—</u>	<u>—</u>	<u>—</u>	<u>—</u>
<u>—</u>	<u>Feet of</u>	<u>—</u>	<u>—</u>	<u>—</u>	<u>—</u>

Rec Total 573' BHT 125° Gravity 37 API RW .12 @ 62 ° F Chlorides 63006 ppm

(A) Initial Hydrostatic <u>2091</u>	<input checked="" type="checkbox"/> Test <u>1150</u>	T-On Location <u>0328</u>
(B) First Initial Flow <u>51</u>	<input checked="" type="checkbox"/> Jars <u>250</u>	T-Started <u>0359</u>
(C) First Final Flow <u>122</u>	<input checked="" type="checkbox"/> Safety Joint <u>75</u>	T-Open <u>0623</u>
(D) Initial Shut-In <u>234</u>	<input type="checkbox"/> Circ Sub <u>—</u>	T-Pulled <u>0908</u>
(E) Second Initial Flow <u>179</u>	<input type="checkbox"/> Hourly Standby <u>—</u>	T-Out <u>1134</u>
(F) Second Final Flow <u>247</u>	<input checked="" type="checkbox"/> Mileage <u>PF RT x 2</u>	Comments <u>Tools loaded</u>
(G) Final Shut-In <u>721</u>	<input type="checkbox"/> Sampler <u>51+51</u>	<u>10/26 @ 1715 for</u>
(H) Final Hydrostatic <u>2049</u>	<input type="checkbox"/> Straddle <u>—</u>	<u>rig repairs</u>

Initial Open <u>30</u>	<input type="checkbox"/> Shale Packer <u>—</u>	<input type="checkbox"/> Ruined Shale Packer <u>—</u>
Initial Shut-In <u>45</u>	<input type="checkbox"/> Extra Packer <u>—</u>	<input type="checkbox"/> Ruined Packer <u>—</u>
Final Flow <u>30</u>	<input type="checkbox"/> Extra Recorder <u>—</u>	Sub Total <u>0</u>
Final Shut-In <u>60</u>	<input type="checkbox"/> Day Standby <u>—</u>	Total <u>1577</u>
	<input type="checkbox"/> Accessibility <u>—</u>	MP/DST Disc't <u>—</u>
	Sub Total <u>1577</u>	

Approved By \_\_\_\_\_ Our Representative Brannan Lonsdale

Trilobite Testing Inc. shall not be liable for damaged of any kind of the property or personnel of the one for whom a test is made, or for any loss suffered or sustained, directly or indirectly, through the use of its equipment, or its statements or opinion concerning the results of any test, tools lost or damaged in the hole shall be paid for at cost by the party for whom the test is made.



# TRILOBITE TESTING INC.

1515 Commerce Parkway • Hays, Kansas 67601

## Test Ticket

NO. **61950**

Well Name & No. Neely A #1 Test No. 3 Date 4 NOV 16  
 Company Blue Goose Drilling Company Inc. Elevation 2689 KB 2679 GL  
 Address PO Box 1413 Great Bend KS 67530  
 Co. Rep / Geo. Ken Wallace Rig Southwind Rig 1  
 Location: Sec. 10 Twp. 18S Rge. 27W Co. Lane State KS

Interval Tested 4309-4336 Zone Tested Pleasanton  
 Anchor Length 27 Drill Pipe Run 4310 Mud Wt. 8.8  
 Top Packer Depth 4304 Drill Collars Run — Vis 68  
 Bottom Packer Depth 4309 Wt. Pipe Run — WL 7.2  
 Total Depth 4336 Chlorides 6100 ppm System LCM 1 #

Blow Description I.F Blow built to 3 1/2 inches  
I.S.I No blow back  
F.F Blow built to 11 inches  
F.S.I No blow back

Rec	Feet of	%gas	%oil	%water	%mud
<u>30</u>	<u>Emulsified oil</u>				
<u>150</u>	<u>Gas in Pipe</u>				

Rec Total \_\_\_\_\_ BHT 122 Gravity \_\_\_\_\_ API RW \_\_\_\_\_ @ \_\_\_\_\_ °F Chlorides \_\_\_\_\_ ppm

(A) Initial Hydrostatic <u>2110</u>	<input checked="" type="checkbox"/> Test <u>1150</u>	T-On Location <u>6:59 am</u>
(B) First Initial Flow <u>19</u>	<input checked="" type="checkbox"/> Jars <u>250</u>	T-Started <u>7:40 am</u>
(C) First Final Flow <u>19</u>	<input checked="" type="checkbox"/> Safety Joint <u>75</u>	T-Open <u>9:46 am</u>
(D) Initial Shut-In <u>320</u>	<input type="checkbox"/> Circ Sub _____	T-Pulled <u>1:01 AM</u>
(E) Second Initial Flow <u>16</u>	<input type="checkbox"/> Hourly Standby _____	T-Out <u>2:27 pm</u>
(F) Second Final Flow <u>27</u>	<input checked="" type="checkbox"/> Mileage <u>68</u> 51	Comments _____
(G) Final Shut-In <u>319</u>	<input type="checkbox"/> Sampler _____	
(H) Final Hydrostatic <u>2077</u>	<input type="checkbox"/> Straddle _____	<input type="checkbox"/> Ruined Shale Packer _____
Initial Open <u>30</u>	<input type="checkbox"/> Shale Packer _____	<input type="checkbox"/> Ruined Packer _____
Initial Shut-In <u>45</u>	<input type="checkbox"/> Extra Packer _____	<input type="checkbox"/> Extra Copies _____
Final Flow <u>60</u>	<input type="checkbox"/> Extra Recorder _____	Sub Total <u>0</u>
Final Shut-In <u>60</u>	<input type="checkbox"/> Day Standby _____	Total <u>1526</u>
	<input type="checkbox"/> Accessibility _____	MP/DST Disc't _____
	Sub Total <u>1526</u>	

Approved By Ken Wallace Our Representative [Signature]

TriLOBITE Testing Inc. shall not be liable for damaged of any kind of the property or personnel of the one for whom a test is made, or for any loss suffered or sustained, directly or indirectly, through the use of its equipment, or its statements or opinion concerning the results of any test, tools lost or damaged in the hole shall be paid for at cost by the party for whom the test is made.





# TRILOBITE TESTING INC.

1515 Commerce Parkway • Hays, Kansas 67601

## Test Ticket

NO. **63676**

Well Name & No. Neely A #1 Test No. 4 Date 5 NOV 16  
 Company Blue goose Drilling Inc. Elevation 2689 KB 2679 GL  
 Address PO Box 1413 Great Bend Kansas 67530  
 Co. Rep / Geo. Ken Wallace Rig Southwind 1  
 Location: Sec. 10 Twp. 18S Rge. 27W Co. Lane State KS

Interval Tested 4474-4517 Zone Tested Fort Scott  
 Anchor Length 43 Drill Pipe Run 4470 Mud Wt. 9.2  
 Top Packer Depth 4469 Drill Collars Run - Vis 56  
 Bottom Packer Depth 4474 Wt. Pipe Run - WL 8.8  
 Total Depth 4517 Chlorides 5,800 ppm System LCM 1#

Blow Description I.F. Blow built to bottom of bucket in 24 minutes  
I.S.I. No blow back  
F.F. Blow built to bottom of bucket in 27 minutes  
F.S.I. No blow back

Rec	Feet of	%gas	%oil	%water	%mud
<u>10</u>	<u>Clean 0.1</u>	<u>100</u>			
<u>220</u>	<u>Muddy Water w/show of oil</u>		<u>75</u>	<u>25</u>	
<u>70</u>	<u>gas in pipe</u>	<u>100</u>			

Rec Total 230 BHT 130 Gravity 38 API RW .37 @ 63 °F Chlorides 19,000 ppm

(A) Initial Hydrostatic <u>2734</u>	<input checked="" type="checkbox"/> Test <u>1150</u>	T-On Location <u>11:44 pm</u>
(B) First Initial Flow <u>23</u>	<input checked="" type="checkbox"/> Jars <u>250</u>	T-Started <u>1:01 pm</u>
(C) First Final Flow <u>64</u>	<input checked="" type="checkbox"/> Safety Joint <u>75</u>	T-Open <u>2:32 pm</u>
(D) Initial Shut-In <u>785</u>	<input type="checkbox"/> Circ Sub	T-Pulled <u>5:32 pm</u>
(E) Second Initial Flow <u>66</u>	<input type="checkbox"/> Hourly Standby	T-Out <u>8:18 pm</u>
(F) Second Final Flow <u>123</u>	<input checked="" type="checkbox"/> Mileage <u>68</u> <u>51</u>	Comments
(G) Final Shut-In <u>774</u>	<input type="checkbox"/> Sampler	
(H) Final Hydrostatic <u>2150</u>	<input type="checkbox"/> Straddle	<input type="checkbox"/> Ruined Shale Packer

Initial Open 30  
 Initial Shut-In 45  
 Final Flow 45  
 Final Shut-In 60

Shale Packer  
 Extra Packer  
 Extra Recorder  
 Day Standby  
 Accessibility  
 Sub Total 1526

Ruined Packer  
 Extra Copies  
 Sub Total 0  
 Total 1526  
 MP/DST Disc't

Approved By Ken Wallace Our Representative [Signature]

Trilobite Testing Inc. shall not be liable for damaged of any kind of the property or personnel of the one for whom a test is made, or for any loss suffered or sustained, directly or indirectly, through the use of its equipment, or its statements or opinion concerning the results of any test, tools lost or damaged in the hole shall be paid for at cost by the party for whom the test is made.