

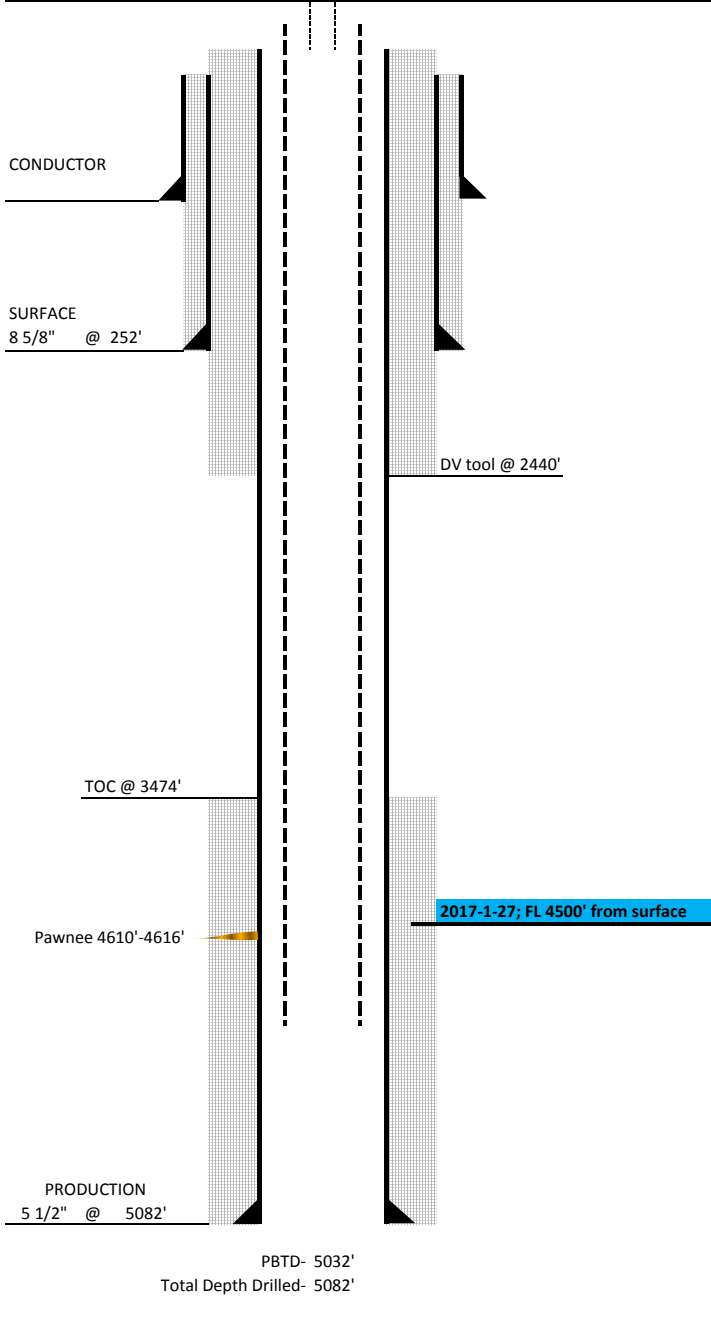


Well Name: **A C Felts #1**  
 State: KS  
 County: Scott  
 Field: White  
 API: 15-171-20878  
 Location: 6-18-34 W  
 Operator: **NGO**

Elevations	
RKB	3164'
DF	
GL	3154'

Directional Data		
KOP		RKB
Max DEV	o	RKB
Max Dogleg	o	RKB
Dev @ Perfs	o	RKB
Return to Vertical		RKB

Last Update: 1/30/2017  
 Schematic AS OF Date: 6/9/2014  
 Spud: 5/14/2012  
 TD: 5/24/2012  
 Completion: 5/25/2012



**CASING / CEMENT**

INTERVAL	HOLE	CSG	WT.	GR.	Depth Top	Depth Btm	LENGTH	CMT	TOC
COND.	-	-	-	-					
SURF.	12.25"	8 5/8"	24#	J-55		263'		200 sx	
Production	7.25"	5 1/2"		J-55		5082'			
DV Tool									
Tbg									
SN									
Rods									

**Perf Data**

Stage #	Formation	Top Perf	Btm Perf	Length	Net ft	SPF	Total Holes
1	Pawnee	4,610'	4,616'	6'	6'	6	36

NOTES: 12/29/16  
 TA well in January 2017, pumping unit will go to the Riedel 2-5.

**Stimulation Data**

Stage #	Water	Proppant	Acid	Avg R	Max R	Avg P	ISIP	FG



2017-1-27; FL 4500' from surface