



TRILOBITE TESTING, INC.

DRILL STEM TEST REPORT

Lebsack Oil Productions Inc.

34/20S/10W/Rice

PO Box 354
Chase, Kansas 67524

North River #6

Job Ticket: 63689

DST#: 2

ATTN: Josh Austin

Test Start: 2016.12.13 @ 19:15:00

GENERAL INFORMATION:

Formation: **Lansing zone F**

Deviated: No Whipstock: ft (KB)

Time Tool Opened: 20:50:30

Time Test Ended: 00:53:00

Test Type: Conventional Bottom Hole (Initial)

Tester: Ken Swinney

Unit No: 72 Great Bend/50

Interval: 3065.00 ft (KB) To 3080.00 ft (KB) (TVD)

Reference Elevations: 1729.00 ft (KB)

Total Depth: 3080.00 ft (KB) (TVD)

1718.00 ft (CF)

Hole Diameter: 7.80 inches Hole Condition: Fair

KB to GR/CF: 11.00 ft

Serial #: 6999 Inside

Press@RunDepth: 34.45 psig @ 3076.00 ft (KB)

Capacity: 8000.00 psig

Start Date: 2016.12.13

End Date:

2016.12.14

Last Calib.:

2016.12.14

Start Time: 19:15:05

End Time:

00:52:59

Time On Btm:

2016.12.13 @ 20:49:00

Time Off Btm:

2016.12.13 @ 23:20:30

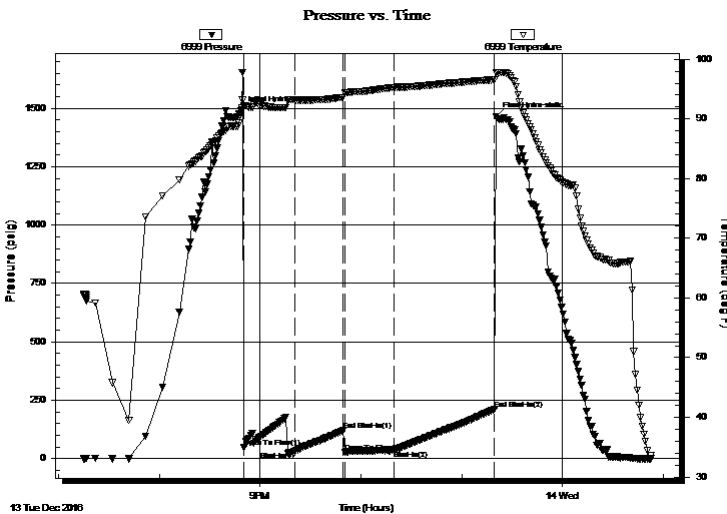
TEST COMMENT: I.F. 30 minutes/Light surging build to 5 1/2 inches/ Strong surge at 25 minutes to BOB

I.S.I. 30 minutes/Light surface blow back

F.F. 30 minutes/Surging build to BOB in 17 minutes

F.S.I. 60 minutes/No blow back

PRESSURE SUMMARY



| Time (Min.) | Pressure (psig) | Temp (deg F) | Annotation |
|-------------|-----------------|--------------|----------------------|
| 0 | 1491.64 | 91.84 | Initial Hydro-static |
| 2 | 49.96 | 92.23 | Open To Flow (1) |
| 32 | 30.99 | 93.21 | Shut-In(1) |
| 61 | 120.05 | 93.62 | End Shut-In(1) |
| 62 | 27.52 | 94.35 | Open To Flow (2) |
| 91 | 34.45 | 95.28 | Shut-In(2) |
| 151 | 211.33 | 96.59 | End Shut-In(2) |
| 152 | 1463.76 | 97.70 | Final Hydro-static |

Recovery

| Length (ft) | Description | Volume (bbl) |
|-------------|---------------------------|--------------|
| 60.00 | Gassy Emulsified Oily Mud | 0.30 |
| 0.00 | Gas 20% Oil 20% Mud 60% | 0.00 |
| 0.00 | 120 feet of gas in pipe | 0.00 |
| | | |
| | | |

Gas Rates

| | Choke (inches) | Pressure (psig) | Gas Rate (Mcf/d) |
|--|----------------|-----------------|------------------|
| | | | |



**TRILOBITE
TESTING, INC**

DRILL STEM TEST REPORT

Lebsack Oil Productions Inc.

34/20S/10W/Rice

PO Box 354
Chase, Kansas 67524

North River #6

Job Ticket: 63689

DST#: 2

ATTN: Josh Austin

Test Start: 2016.12.13 @ 19:15:00

GENERAL INFORMATION:

Formation: **Lansing zone F**

Deviated: No Whipstock: ft (KB)

Time Tool Opened: 20:50:30

Time Test Ended: 00:53:00

Test Type: Conventional Bottom Hole (Initial)

Tester: Ken Swinney

Unit No: 72 Great Bend/50

Interval: 3065.00 ft (KB) To 3080.00 ft (KB) (TVD)

Reference Elevations: 1729.00 ft (KB)

Total Depth: 3080.00 ft (KB) (TVD)

1718.00 ft (CF)

Hole Diameter: 7.80 inches Hole Condition: Fair

KB to GR/CF: 11.00 ft

Serial #: 8960 Outside

Press@RunDepth: 207.92 psig @ 3077.00 ft (KB)

Capacity: 8000.00 psig

Start Date: 2016.12.13

End Date:

2016.12.14

Last Calib.:

2016.12.14

Start Time: 19:15:05

End Time:

00:52:29

Time On Btm:

2016.12.13 @ 20:48:30

Time Off Btm:

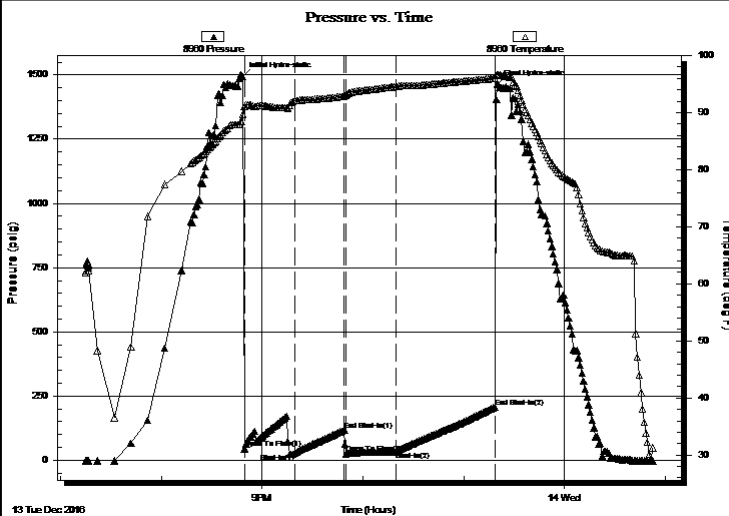
2016.12.13 @ 23:20:00

TEST COMMENT: I.F. 30 minutes/Light surging build to 5 1/2 inches/ Strong surge at 25 minutes to BOB

I.S.I. 30 minutes/Light surface blow back

F.F. 30 minutes/Surging build to BOB in 17 minutes

F.S.I. 60 minutes/No blow back



PRESSURE SUMMARY

| Time (Min.) | Pressure (psig) | Temp (deg F) | Annotation |
|-------------|-----------------|--------------|----------------------|
| 0 | 1492.80 | 89.76 | Initial Hydro-static |
| 1 | 45.09 | 91.10 | Open To Flow (1) |
| 31 | 27.42 | 92.07 | Shut-In(1) |
| 61 | 118.78 | 92.93 | End Shut-In(1) |
| 62 | 25.70 | 93.00 | Open To Flow (2) |
| 92 | 34.47 | 94.59 | Shut-In(2) |
| 150 | 207.92 | 95.99 | End Shut-In(2) |
| 152 | 1462.74 | 96.68 | Final Hydro-static |

Recovery

| Length (ft) | Description | Volume (bbl) |
|-------------|---------------------------|--------------|
| 60.00 | Gassy Emulsified Oily Mud | 0.30 |
| 0.00 | Gas 20% Oil 20% Mud 60% | 0.00 |
| 0.00 | 120 feet of gas in pipe | 0.00 |
| | | |
| | | |

Gas Rates

| Choke (inches) | Pressure (psig) | Gas Rate (Mcf/d) |
|----------------|-----------------|------------------|
| | | |



**TRILOBITE
TESTING, INC**

DRILL STEM TEST REPORT

FLUID SUMMARY

Lebsack Oil Productions Inc.

34/20S/10W/Rice

PO Box 354
Chase, Kansas 67524

North River #6

Job Ticket: 63689

DST#: 2

ATTN: Josh Austin

Test Start: 2016.12.13 @ 19:15:00

Mud and Cushion Information

Mud Type: Gel Chem
Mud Weight: 9.00 lb/gal
Viscosity: 48.00 sec/qt
Water Loss: 9.17 in³
Resistivity: ohm.m
Salinity: 8400.00 ppm
Filter Cake: 1.00 inches

Cushion Type:
Cushion Length: ft
Cushion Volume: bbl
Gas Cushion Type:
Gas Cushion Pressure: psig

Oil API: deg API
Water Salinity: ppm

Recovery Information

Recovery Table

| Length ft | Description | Volume bbl |
|--------------|---------------------------|---------------|
| 60.00 | Gassy Emulsified Oily Mud | 0.295 |
| 0.00 | Gas 20% Oil 20% Mud 60% | 0.000 |
| 0.00 | 120 feet of gas in pipe | 0.000 |

Total Length: 60.00 ft Total Volume: 0.295 bbl

Num Fluid Samples: 0

Num Gas Bombs: 0

Serial #:

Laboratory Name:

Laboratory Location:

Recovery Comments: tool plugged during initial flow

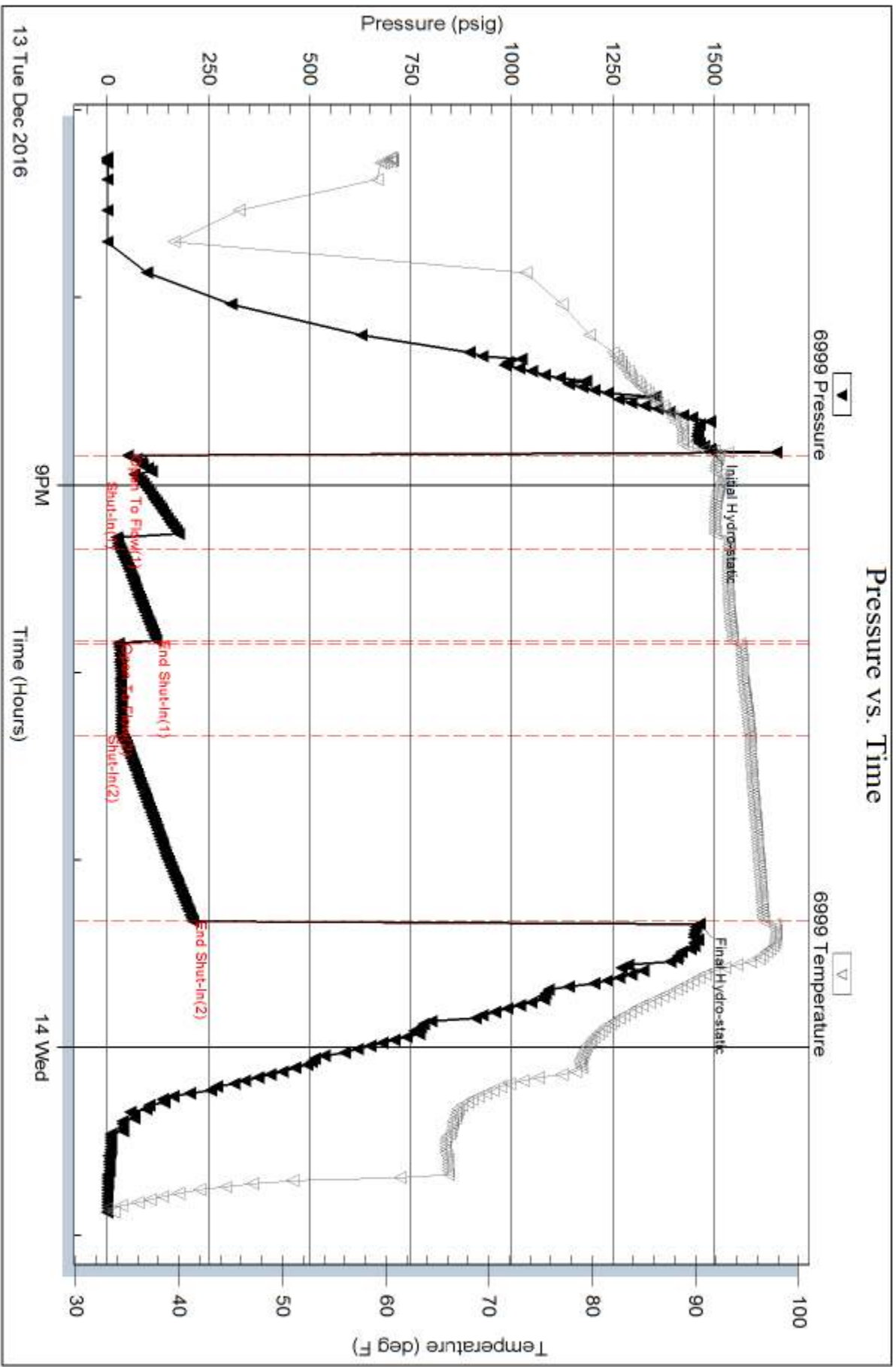
Serial #: 6999

Inside

Lebsack Oil Productions Inc.

North River #6

DST Test Number: 2

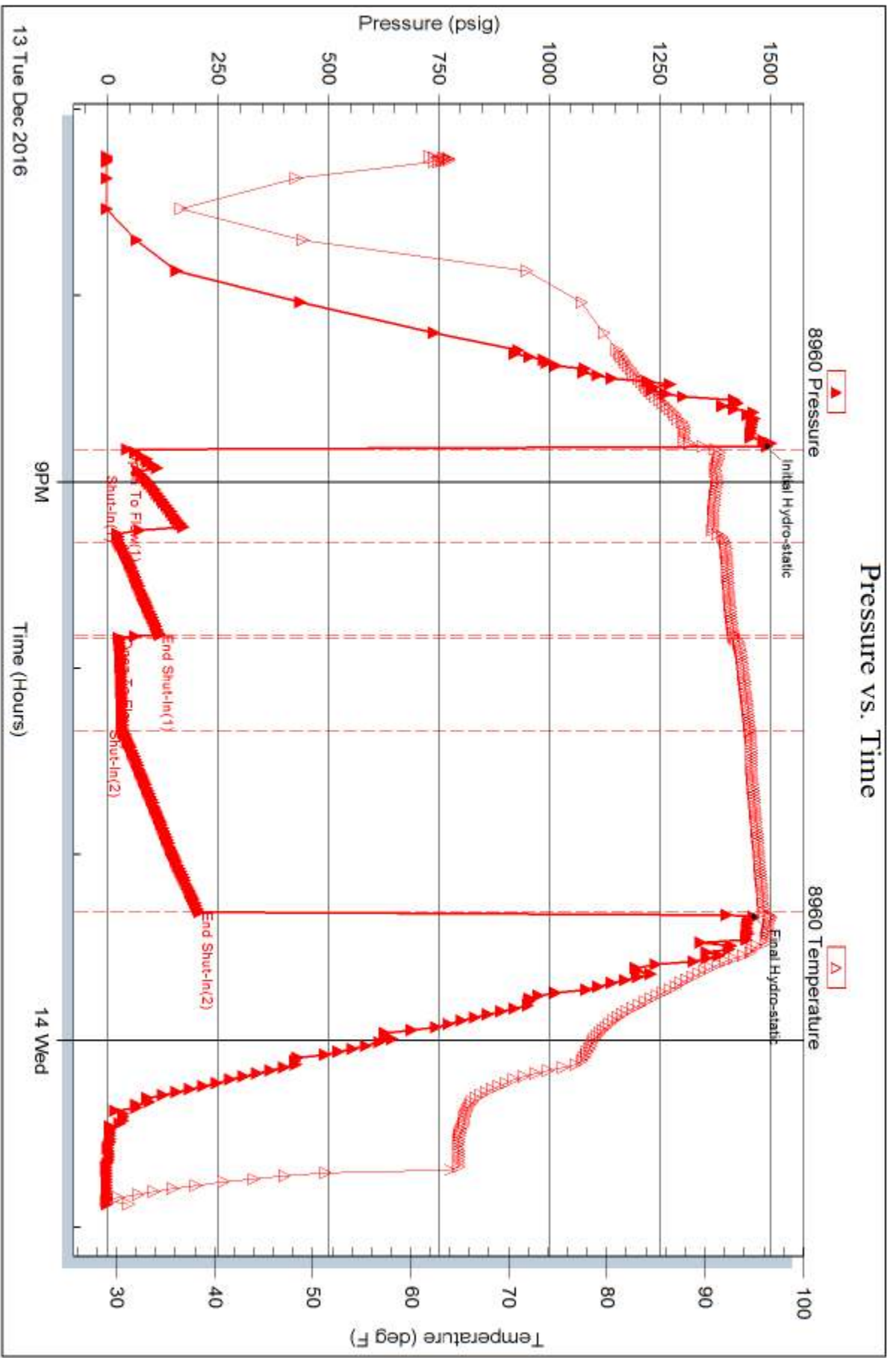


Serial #: 8960

Outside Lebsack Oil Productions Inc.

North River #6

DST Test Number: 2



Triobite Testing, Inc

Ref. No: 63689

Printed: 2016.12.14 @ 07:37:30