

ADVANTAGE ELEVATIONS

OIL FIELD SURVEYORS

BOX 8604 - PRATT, KS 67124
(620) 672-6491

113172

INVOICE NO.

CMX, INC

OPERATOR

1-20

NO.

BEACON HILL

FARM

PRATT

COUNTY

20

S

27s

T

14w

R

780' FSL & 330' FEL of Sec.

LOCATION

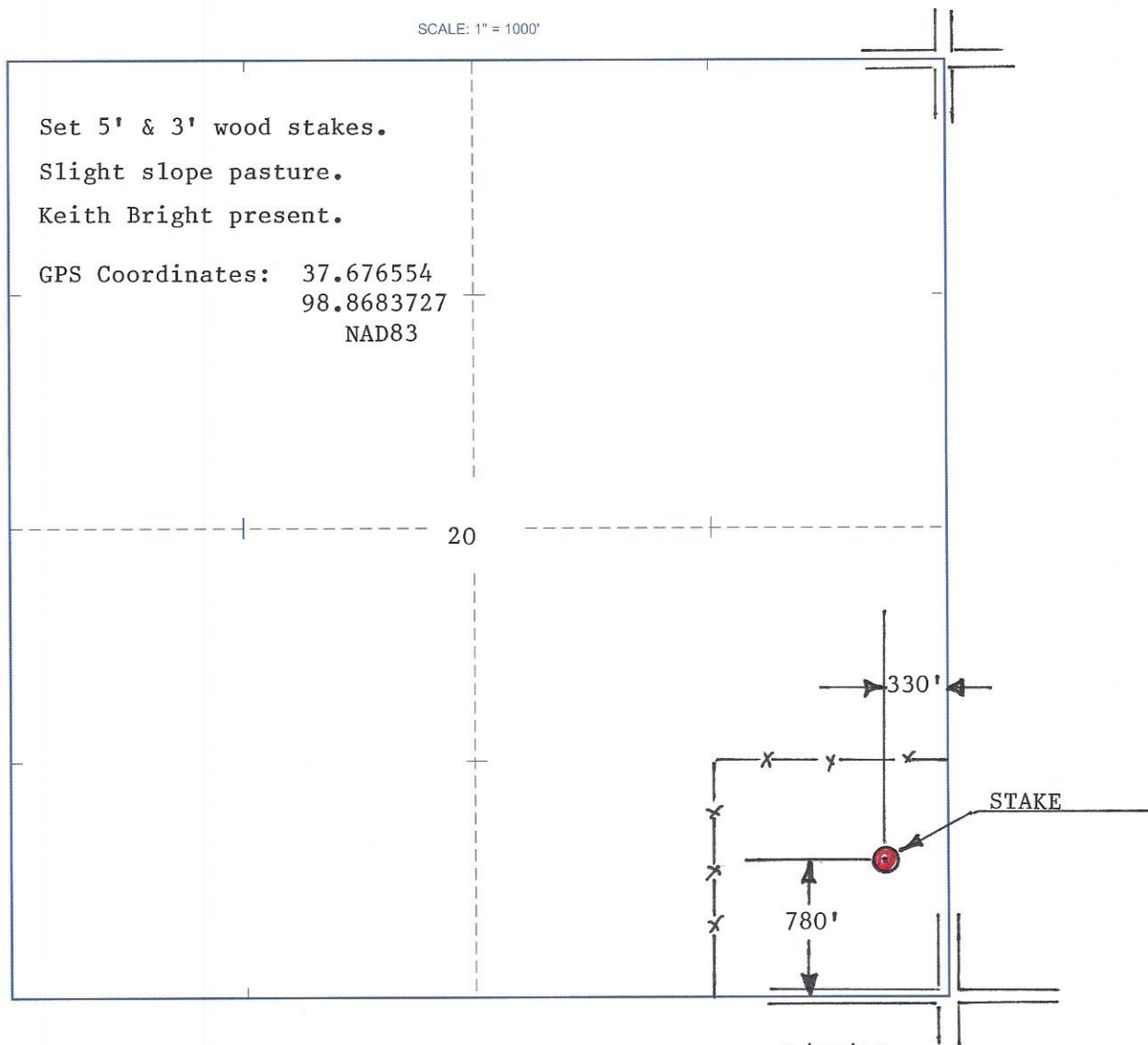
ELEVATION: 1990' GR



CMX, INC
1700 N Waterfront Pkwy
Bldg 300, Ste B
Wichita, KS 67206

AUTHORIZED BY: Leah Kasten

SCALE: 1" = 1000'



DATE STAKED: 1/25/17