



TEMPORARY ABANDONMENT WELL APPLICATION

OPERATOR: License# _____
 Name: _____
 Address 1: _____
 Address 2: _____
 City: _____ State: _____ Zip: _____ + _____
 Contact Person: _____
 Phone: (_____) _____
 Contact Person Email: _____
 Field Contact Person: _____
 Field Contact Person Phone: (_____) _____

API No. 15- _____
 Spot Description: _____
 _____ - _____ - _____ - _____ Sec. _____ Twp. _____ S. R. _____ E W
 _____ feet from N / S Line of Section
 _____ feet from E / W Line of Section
 GPS Location: Lat: _____, Long: _____
(e.g. xx.xxxxx) (e.g. -xxx.xxxxx)
 Datum: NAD27 NAD83 WGS84
 County: _____ Elevation: _____ GL KB
 Lease Name: _____ Well #: _____
 Well Type: (check one) Oil Gas OG WSW Other: _____
 SWD Permit #: _____ ENHR Permit #: _____
 Gas Storage Permit #: _____
 Spud Date: _____ Date Shut-In: _____

	Conductor	Surface	Production	Intermediate	Liner	Tubing
Size						
Setting Depth						
Amount of Cement						
Top of Cement						
Bottom of Cement						

Casing Fluid Level from Surface: _____ How Determined? _____ Date: _____
 Casing Squeeze(s): _____ to _____ w / _____ sacks of cement, _____ to _____ w / _____ sacks of cement. Date: _____
(top) (bottom) (top) (bottom)
 Do you have a valid Oil & Gas Lease? Yes No
 Depth and Type: Junk in Hole at _____ Tools in Hole at _____ Casing Leaks: Yes No Depth of casing leak(s): _____
(depth) (depth)
 Type Completion: ALT. I ALT. II Depth of: DV Tool: _____ w / _____ sacks of cement Port Collar: _____ w / _____ sack of cement
(depth) (depth)
 Packer Type: _____ Size: _____ Inch Set at: _____ Feet
 Total Depth: _____ Plug Back Depth: _____ Plug Back Method: _____

Geological Data:

Formation Name	Formation Top	Formation Base	Completion Information
1. _____	At: _____	to _____ Feet	Perforation Interval _____ to _____ Feet or Open Hole Interval _____ to _____ Feet
2. _____	At: _____	to _____ Feet	Perforation Interval _____ to _____ Feet or Open Hole Interval _____ to _____ Feet

UNDER PENALTY OF PERJURY I HEREBY ATTEST THAT THE INFORMATION CONTAINED HEREIN IS TRUE AND CORRECT TO THE BEST OF MY KNOWLEDGE

Submitted Electronically

Do NOT Write in This Space - KCC USE ONLY

Date Tested: _____ Results: _____ Date Plugged: _____ Date Repaired: _____ Date Put Back in Service: _____

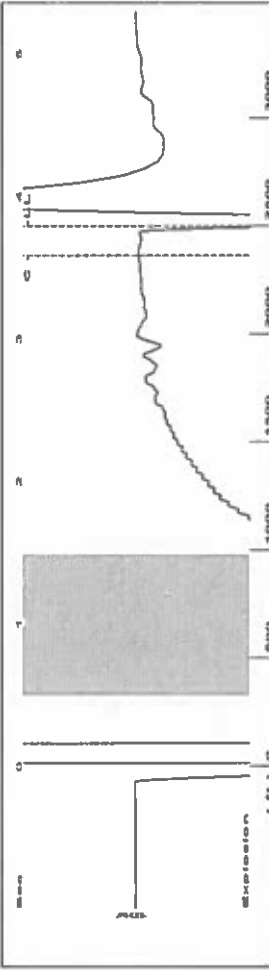
Review Completed by: _____ Comments: _____

TA Approved: Yes Denied Date: _____

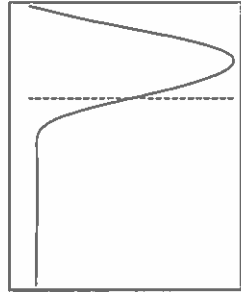
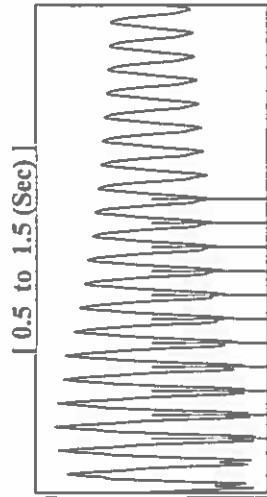
Mail to the Appropriate KCC Conservation Office:

	KCC District Office #1 - 210 E. Frontview, Suite A, Dodge City, KS 67801	Phone 620.225.8888
	KCC District Office #2 - 3450 N. Rock Road, Building 600, Suite 601, Wichita, KS 67226	Phone 316.337.7400
	KCC District Office #3 - 1500 SW Seventh Steet, Chanute, KS 66720	Phone 620.432.2300
	KCC District Office #4 - 2301 E. 13th Street, Hays, KS 67601-2651	Phone 785.625.0550

Group: TAD Well: roth f-2 (acquired on: 01/13/17 10:39:34)



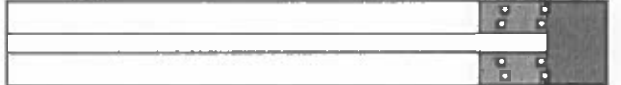
Filter Type High Pass Automatic Collar Count Yes
 Manual Acoustic Veloc 1288.62 ft/s Manual JTS/sec 20.3252
 Time 3.791 sec
 Joints 78.7674 Jts
 Depth 2496.93 ft



Analysis Method: Automatic

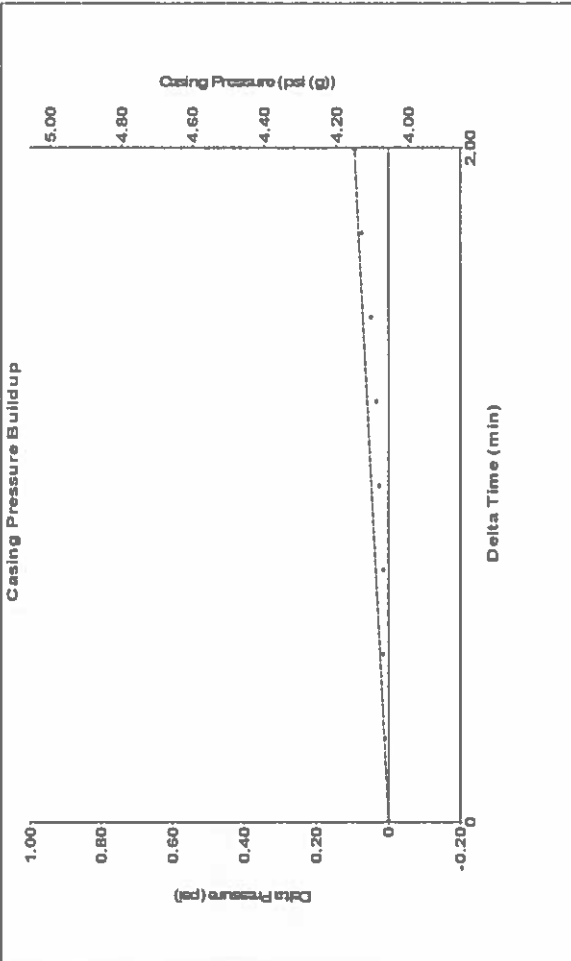
Group: TAD Well: roth f-2 (acquired on: 01/13/17 10:39:34)

Production	Potential	Casing Pressure	4.1 psi (g)
Oil	- * - BBL/D	Casing Pressure Buildup	0.094 psi
Water	- * - BBL/D	2.00 min	
Gas	- * - Mscf/D	Gas/Liquid Interface Pressure	5.2 psi (g)
IPR Method	Vogel	Liquid Level Depth	2496.93 ft
PBHP/SBHP	- * -	Pump Intake Depth	2910.00 ft
Production Efficiency	0.0	Formation Depth	2896.00 ft
Oil	40 deg API	Acoustic Velocity	1317.29 ft/s
Water	1.05 Sp.Gr. H2O	Formation Submergence	413 ft
Gas	0.69 Sp.Gr. AIR	Total Gaseous Liquid Column HT (TVD)	397 ft
Equivalent Gas Free Liquid HT (TVD)		Acoustic Test	



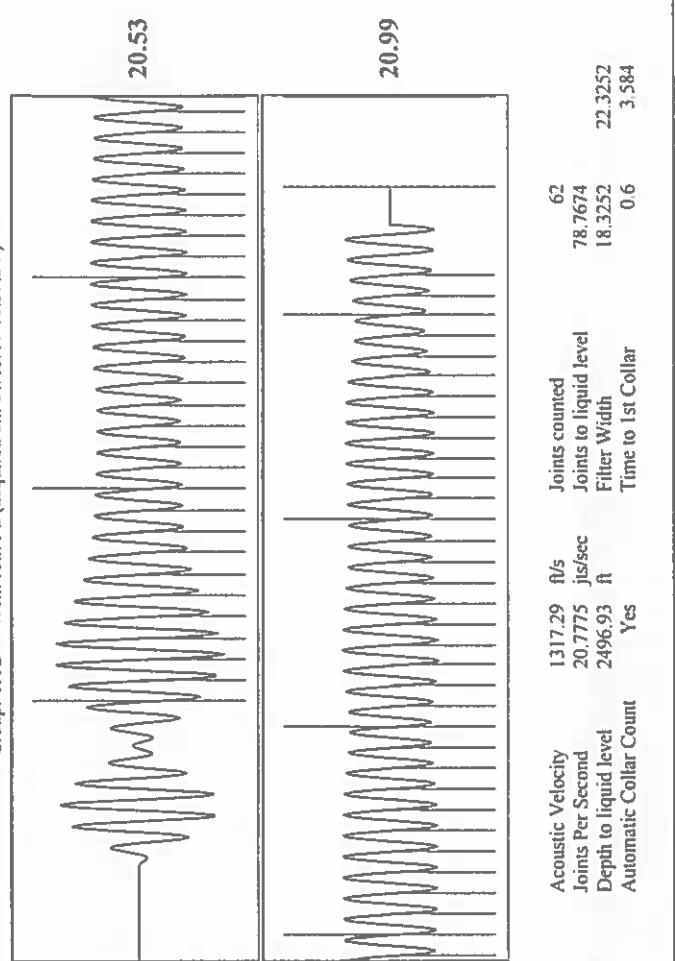
Producing	Annular Gas Flow	1 Mscf/D
% Liquid	96 %	
Pump Intake	139 l	psi (g)
Producing BHP	134.4	psi (g)
Static BHP	- * -	psi (g)

Group: TAD Well: roth f-2 (acquired on: 01/13/17 10:39:34)



Change in Pressure 0.09 psi
 Change in Time 2.00 min
 Range PT14679
 0 - ? psi

Group: TAD Well: roth f-2 (acquired on: 01/13/17 10:39:34)



Acoustic Velocity 1317.29 ft/s
 Joints Per Second 20.7775 Jts/sec
 Depth to liquid level 2496.93 ft
 Automatic Collar Count Yes
 Joints counted 62
 Joints to liquid level 78.7674
 Filter Width 18.3252
 Time to 1st Collar 0.6
 22.3252
 3.584

Conservation Division
District Office No. 1
210 E. Frontview, Suite A
Dodge City, KS 67801



Phone: 620-682-7933
<http://kcc.ks.gov/>

Pat Apple, Chairman
Shari Feist Albrecht, Commissioner
Jay Scott Emler, Commissioner

Sam Brownback, Governor

February 07, 2017

Latherine McClurkan
Merit Energy Company, LLC
13727 Noel Road, Suite 1200
Dallas, TX 75240

Re: Temporary Abandonment
API 15-055-21425-00-01
Roth F 2-9
NE/4 Sec.09-23S-34W
Finney County, Kansas

Dear Latherine McClurkan:

"Your temporary abandonment (TA) application for the well listed above has been approved. In accordance with K.A.R. 82-3-111 the TA status of this well will expire 02/07/2018.

- * If you return this well to service or plug it, please notify the District Office.
- * If you sell this well you are required to file a Transfer of Operator form, T-1.
- * If the well will remain temporarily abandoned, you must submit a new TA application, CP-111, before 02/07/2018.

You may contact me at the number above if you have questions.

Very truly yours,

Michael Maier"