

Form	ACO1 - Well Completion
Operator	Cholla Production, LLC
Well Name	Vulgamore 1-21
Doc ID	1062876

Perforations

Perforations			
4		815 gal diesel w/73 gal HCL;100gal	4622-28; 4630-32
		acetic acid;10 gal surfactant; 2 gal	
		inhibitor w/50 ball sealers	
		Frac w/400 bbls gel wtr (74 bbls);	
		15000# sd.	
4	RBP@4525	Acidize w/300 gal MCA HCL	4456-60
		600 gal NE FE 15% HCL	
4	RBP@4408	Acidize w/300 gal MCA 15% HCL	4375-79
		2400 gal NE FE 15% HCL	

Conservation Division
District Office No. 1
210 E. Frontview, Suite A
Dodge City, KS 67801



Phone: 620-225-8888
Fax: 620-225-8885
<http://kcc.ks.gov/>

Jay Scott Emler, Chairman
Shari Feist Albrecht, Commissioner
Pat Apple, Commissioner

Sam Brownback, Governor

November 08, 2016

Emily Hundley-Goff
Cholla Production, LLC
10390 BRADFORD RD.
SUITE 201
LITTLETON, CO 80127-

Re: Temporary Abandonment
API 15-171-20805-00-00
VULGAMORE 1-21
NE/4 Sec.21-19S-33W
Scott County, Kansas

Dear Emily Hundley-Goff:

"Your temporary abandonment (TA) application for the well listed above has been approved. In accordance with K.A.R. 82-3-111 the TA status of this well will expire 11/08/2017.

- * If you return this well to service or plug it, please notify the District Office.
- * If you sell this well you are required to file a Transfer of Operator form, T-1.
- * If the well will remain temporarily abandoned, you must submit a new TA application, CP-111, before 11/08/2017.

You may contact me at the number above if you have questions.

Very truly yours,

Michael Maier"



Fall & Associates
 Stake and Elevation Service
 719 W. 5th Street
 P.O. Box 404
 Concordia, KS. 66901
 1-800-536-2821

Date 2/7/2017

Invoice Number

Cholla Production, LLC

1-36

Gerome Copeland

Operator

Number

Farm Name

Ness Co. - KS

36

20S

25W

520 FNL 1170 FWL

County-State

S

T

R

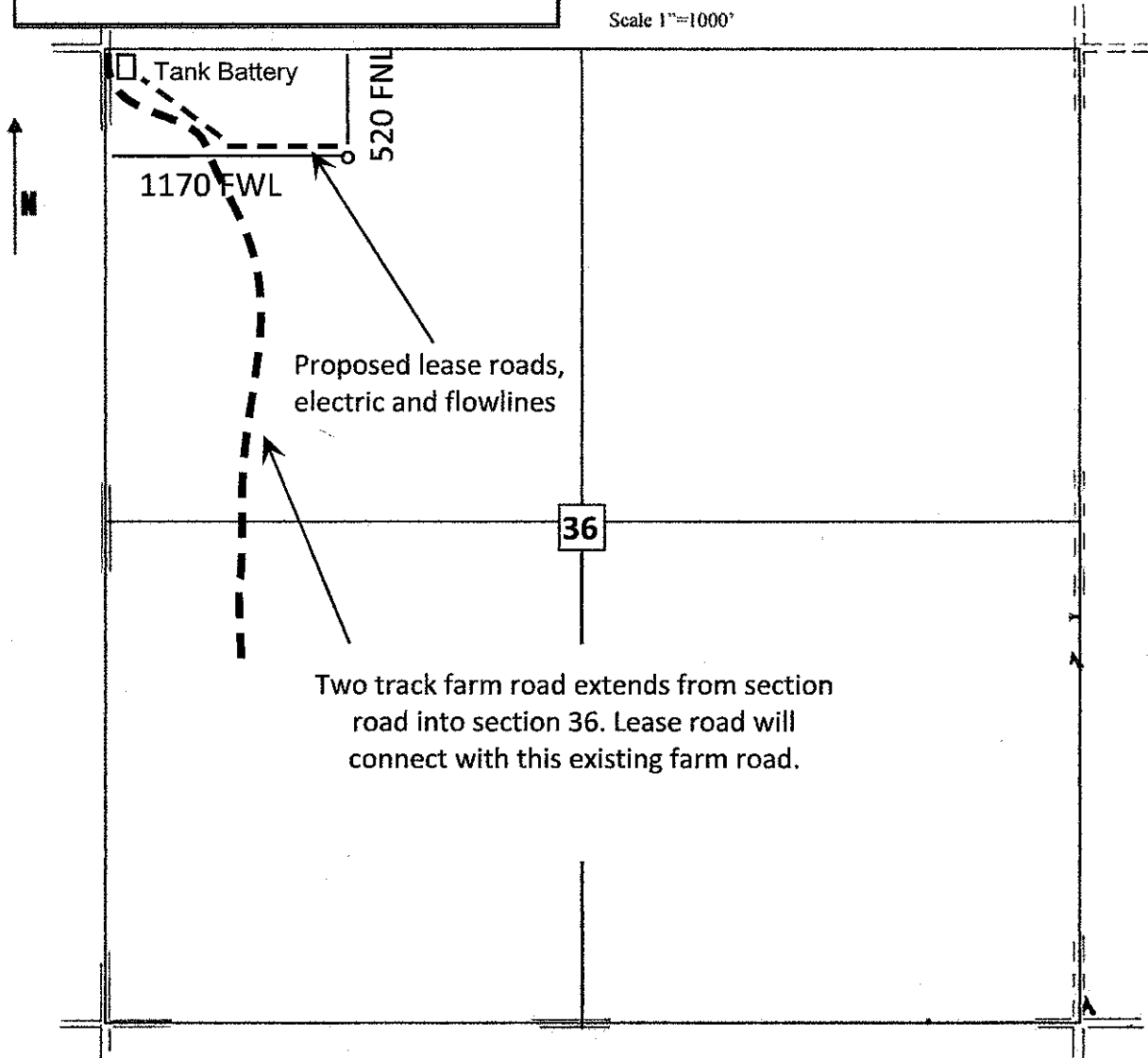
Location

Cholla Production, LLC
 10390 Bradford Rd Ste 201
 Littleton, CO 80127

Elevation 2399 Gr.

Ordered By: Emily

Scale 1"=1000'



Summary of Changes

Lease Name and Number: VULGAMORE 1-21

API/Permit #: 15-171-20805-00-00

Doc ID: 1333833

Correction Number: 1

Field Name	Previous Value	New Value
Approved Date	11/08/2016	02/10/2017
Save Link	../..kcc/detail/operatorEditDetail.cfm?docID=1320015	../..kcc/detail/operatorEditDetail.cfm?docID=1333833

Summary of Attachments

Lease Name and Number: VULGAMORE 1-21

API: 15-171-20805-00-00

Doc ID: 1333833

Correction Number: 1

Attachment Name

Cholla Production-Vulgamore 1-21-Perf record from Completion

Temporary Abandonment Approved

Cholla Production-Gerome Copeland 1-36-Plat