



TEMPORARY ABANDONMENT WELL APPLICATION

OPERATOR: License# _____
 Name: _____
 Address 1: _____
 Address 2: _____
 City: _____ State: _____ Zip: _____ + _____
 Contact Person: _____
 Phone: (_____) _____
 Contact Person Email: _____
 Field Contact Person: _____
 Field Contact Person Phone: (_____) _____

API No. 15- _____
 Spot Description: _____
 _____ - _____ - _____ - _____ Sec. _____ Twp. _____ S. R. _____ E W
 _____ feet from N / S Line of Section
 _____ feet from E / W Line of Section
 GPS Location: Lat: _____, Long: _____
(e.g. xx.xxxxx) (e.g. -xxx.xxxxx)
 Datum: NAD27 NAD83 WGS84
 County: _____ Elevation: _____ GL KB
 Lease Name: _____ Well #: _____
 Well Type: (check one) Oil Gas OG WSW Other: _____
 SWD Permit #: _____ ENHR Permit #: _____
 Gas Storage Permit #: _____
 Spud Date: _____ Date Shut-In: _____

	Conductor	Surface	Production	Intermediate	Liner	Tubing
Size						
Setting Depth						
Amount of Cement						
Top of Cement						
Bottom of Cement						

Casing Fluid Level from Surface: _____ How Determined? _____ Date: _____
 Casing Squeeze(s): _____ to _____ w / _____ sacks of cement, _____ to _____ w / _____ sacks of cement. Date: _____
(top) (bottom) (top) (bottom)
 Do you have a valid Oil & Gas Lease? Yes No
 Depth and Type: Junk in Hole at _____ Tools in Hole at _____ Casing Leaks: Yes No Depth of casing leak(s): _____
(depth) (depth)
 Type Completion: ALT. I ALT. II Depth of: DV Tool: _____ w / _____ sacks of cement Port Collar: _____ w / _____ sack of cement
(depth) (depth)
 Packer Type: _____ Size: _____ Inch Set at: _____ Feet
 Total Depth: _____ Plug Back Depth: _____ Plug Back Method: _____

Geological Data:

Formation Name	Formation Top	Formation Base	Completion Information
1. _____	At: _____	to _____ Feet	Perforation Interval _____ to _____ Feet or Open Hole Interval _____ to _____ Feet
2. _____	At: _____	to _____ Feet	Perforation Interval _____ to _____ Feet or Open Hole Interval _____ to _____ Feet

UNDER PENALTY OF PERJURY I HEREBY ATTEST THAT THE INFORMATION CONTAINED HEREIN IS TRUE AND CORRECT TO THE BEST OF MY KNOWLEDGE

Submitted Electronically

Do NOT Write in This Space - KCC USE ONLY	Date Tested: _____	Results: _____	Date Plugged: _____	Date Repaired: _____	Date Put Back in Service: _____
	Review Completed by: _____ Comments: _____				
TA Approved: <input type="checkbox"/> Yes <input type="checkbox"/> Denied Date: _____					

Mail to the Appropriate KCC Conservation Office:

	KCC District Office #1 - 210 E. Frontview, Suite A, Dodge City, KS 67801	Phone 620.225.8888
	KCC District Office #2 - 3450 N. Rock Road, Building 600, Suite 601, Wichita, KS 67226	Phone 316.337.7400
	KCC District Office #3 - 1500 SW Seventh Steet, Chanute, KS 66720	Phone 620.432.2300
	KCC District Office #4 - 2301 E. 13th Street, Hays, KS 67601-2651	Phone 785.625.0550

General

Well ID - * -
Well Sarah 3317 2-34H
Company Sandridge Energy
Operator - * -
Lease Name Sarah 3317 2-34H
Elevation 1824.00 ft
Production Method Other
Dataset Description

Comment

Surface Unit

Manufacturer - * -
Unit Class Conventional
Unit API Number - * -
Measured Stroke Length - * - in
Rotation CW
Counter Balance Effect (Weights Level) - * - Klb
Weight Of Counter Weights 2000 lb

Prime Mover

Motor Type Electric
Rated HP - * - HP
Run Time 24 hr/day
MFG/Comment - * -

Electric Motor Parameters

Rated Full Load AMPS - * -
Rated Full Load RPM - * -
Synchronous RPM 1200
Voltage - * -
Hertz 60
Phase 3
Power Consumption 5
Power Demand 8 \$/KW

Tubulars

Tubing OD 2.875 in
Casing OD 7.000 in
Average Joint Length 31.700 ft
Anchor Depth - * - ft
Kelly Bushing 20.00 ft

Pump

Plunger Diameter - * - in
Pump Intake Depth 5045.00 ft
**Total Rod Length < Pump Depth

Polished Rod

Polished Rod Diameter - * - in

Rod String

	Top Taper	Taper 2	Taper 3	Taper 4	Taper 5	Taper 6
Rod Type	- * -	- * -	- * -	- * -	- * -	- * -
Rod Length	- * -	- * -	- * -	- * -	- * -	- * - ft
Rod Diameter	- * -	- * -	- * -	- * -	- * -	- * - in
Rod Weight	0.0	0.0	0.0	0.0	0.0	0.0 lb

Total Rod Length 0
Total Rod Weight 0.00

Damp Up 0.050225
Damp Down 0.050225

Conditions

Pressure

Static BHP - * - psi (g)
Static BHP Method - * -
Static BHP Date - * -

Producing BHP 116.7 psi (g)
Producing BHP Method Acoustic
Producing BHP Date 02/10/2017
Formation Depth 5587.00 ft

Surface Producing Pressures

Tubing Pressure - * - psi (g)
Casing Pressure 617.0 psi (g)

Casing Pressure Buildup

Change in Pressure -0.050 psi
Over Change in Time 1.00 min

Production

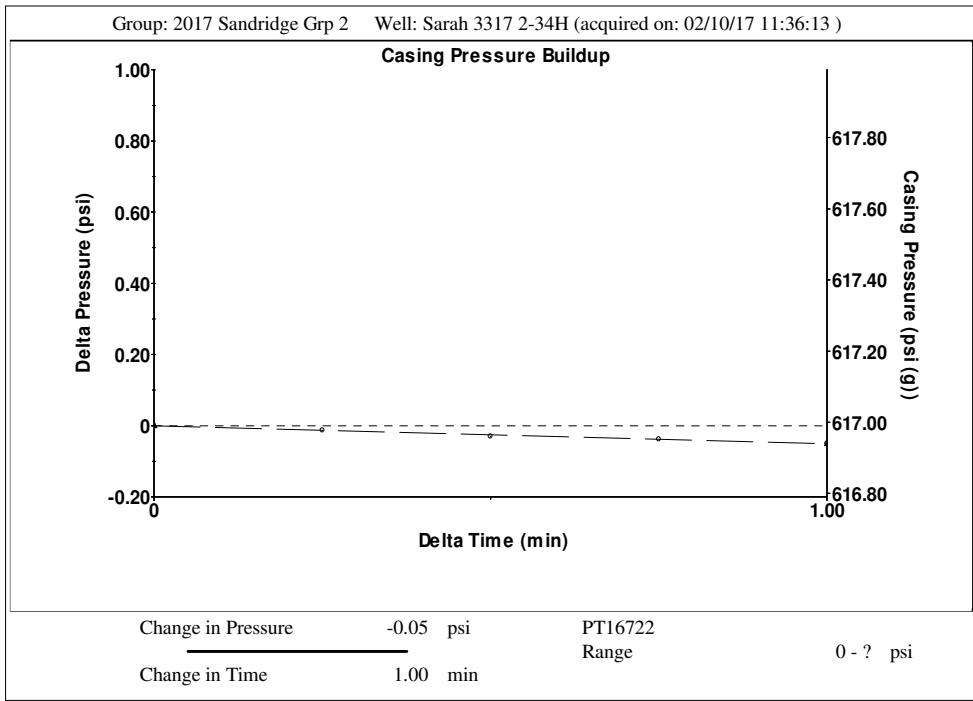
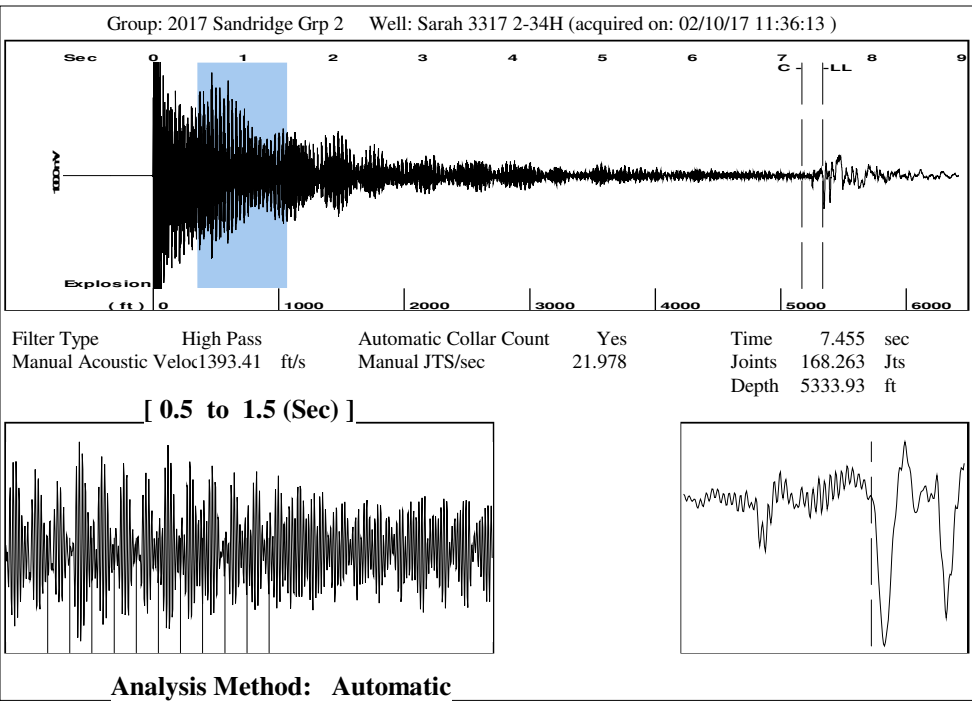
Oil Production 0 BBL/D
Water Production 1 BBL/D
Gas Production - * - Mscf/D
Production Date 02/09/2017

Temperatures

Surface Temperature 70 deg F
Bottomhole Temperature 150 deg F

Fluid Properties

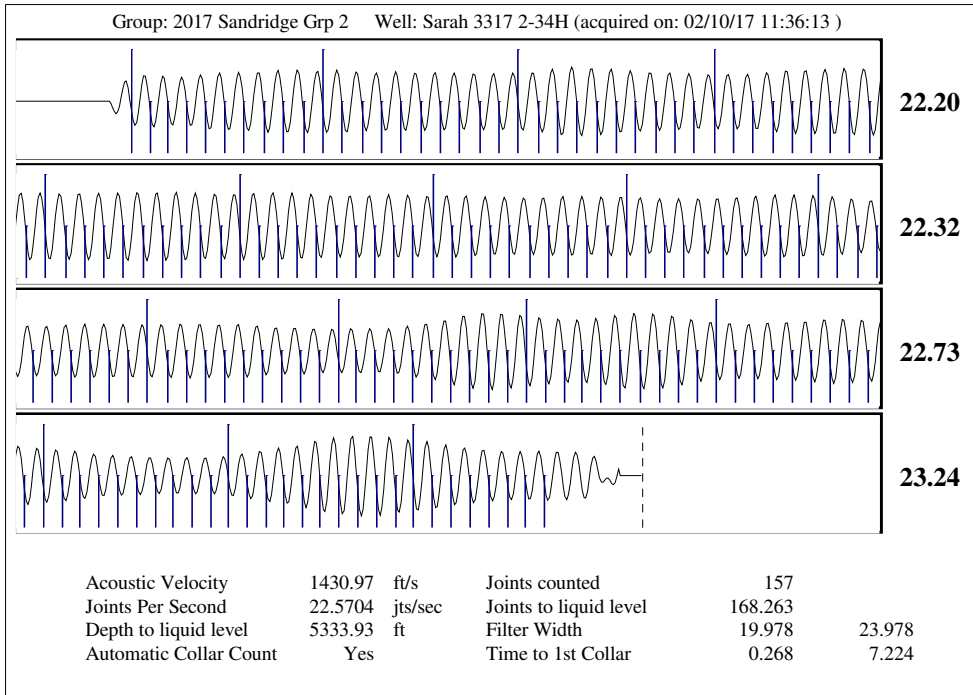
Oil API 40 deg.API
Water Specific Gravity 1.05 Sp.Gr.H2O



Group: 2017 Sandridge Grp 2 Well: Sarah 3317 2-34H (acquired on: 02/10/17 11:36:13)

Production		Potential		Casing Pressure			Static
Oil	0	- * -	BBL/D	Casing Pressure	617.0 psi (g)		Oil Column Height
Water	1	- * -	BBL/D	Casing Pressure Buildup	-0.050 psi		MD 0 ft
Gas	- * -	- * -	Mscf/D	Gas/Liquid Interface Pressure	1.00 min		Water Column Height
IPR Method		Vogel		Gas/Liquid Interface Pressure		MD 233 ft	
PBHP/SBHP		- * -		690.1 psi (g)			
Production Efficiency		0.0		Liquid Level Depth			
Oil	40 deg.API			5333.93 ft			
Water	1.05 Sp.Gr.H2O			Tubing Intake Depth			
Gas	0.57 Sp.Gr.AIR			5045.00 ft			
Acoustic Velocity		1430.97 ft/s		Formation Depth			
				5587.00 ft			
				Static BHP			
				796.1 psi (g)			

Sarah 3317 2-34H



February 21, 2017

Laci Bevans
SandRidge Exploration and Production LLC
123 ROBERT S. KERR AVE
OKLAHOMA CITY, OK 73102-6406

Re: Temporary Abandonment
API 15-033-21666-01-00
SARAH 3317 2-34H
NE/4 Sec.34-33S-17W
Comanche County, Kansas

Dear Laci Bevans:

"Your temporary abandonment (TA) application for the well listed above has been approved. In accordance with K.A.R. 82-3-111 the TA status of this well will expire 02/21/2018.

- * If you return this well to service or plug it, please notify the District Office.
- * If you sell this well you are required to file a Transfer of Operator form, T-1.
- * If the well will remain temporarily abandoned, you must submit a new TA application, CP-111, before 02/21/2018.

You may contact me at the number above if you have questions.

Very truly yours,

Michael Maier"