



# TEMPORARY ABANDONMENT WELL APPLICATION

OPERATOR: License# \_\_\_\_\_  
 Name: \_\_\_\_\_  
 Address 1: \_\_\_\_\_  
 Address 2: \_\_\_\_\_  
 City: \_\_\_\_\_ State: \_\_\_\_\_ Zip: \_\_\_\_\_ + \_\_\_\_\_  
 Contact Person: \_\_\_\_\_  
 Phone: ( \_\_\_\_\_ ) \_\_\_\_\_  
 Contact Person Email: \_\_\_\_\_  
 Field Contact Person: \_\_\_\_\_  
 Field Contact Person Phone: ( \_\_\_\_\_ ) \_\_\_\_\_

API No. 15- \_\_\_\_\_  
 Spot Description: \_\_\_\_\_  
 \_\_\_\_\_ - \_\_\_\_\_ - \_\_\_\_\_ - \_\_\_\_\_ Sec. \_\_\_\_\_ Twp. \_\_\_\_\_ S. R. \_\_\_\_\_  E  W  
 \_\_\_\_\_ feet from  N /  S Line of Section  
 \_\_\_\_\_ feet from  E /  W Line of Section  
 GPS Location: Lat: \_\_\_\_\_, Long: \_\_\_\_\_  
(e.g. xx.xxxxx) (e.g. -xxx.xxxxx)  
 Datum:  NAD27  NAD83  WGS84  
 County: \_\_\_\_\_ Elevation: \_\_\_\_\_  GL  KB  
 Lease Name: \_\_\_\_\_ Well #: \_\_\_\_\_  
 Well Type: (check one)  Oil  Gas  OG  WSW  Other: \_\_\_\_\_  
 SWD Permit #: \_\_\_\_\_  ENHR Permit #: \_\_\_\_\_  
 Gas Storage Permit #: \_\_\_\_\_  
 Spud Date: \_\_\_\_\_ Date Shut-In: \_\_\_\_\_

|                  | Conductor | Surface | Production | Intermediate | Liner | Tubing |
|------------------|-----------|---------|------------|--------------|-------|--------|
| Size             |           |         |            |              |       |        |
| Setting Depth    |           |         |            |              |       |        |
| Amount of Cement |           |         |            |              |       |        |
| Top of Cement    |           |         |            |              |       |        |
| Bottom of Cement |           |         |            |              |       |        |

Casing Fluid Level from Surface: \_\_\_\_\_ How Determined? \_\_\_\_\_ Date: \_\_\_\_\_  
 Casing Squeeze(s): \_\_\_\_\_ to \_\_\_\_\_ w / \_\_\_\_\_ sacks of cement, \_\_\_\_\_ to \_\_\_\_\_ w / \_\_\_\_\_ sacks of cement. Date: \_\_\_\_\_  
(top) (bottom) (top) (bottom)  
 Do you have a valid Oil & Gas Lease?  Yes  No  
 Depth and Type:  Junk in Hole at \_\_\_\_\_  Tools in Hole at \_\_\_\_\_ Casing Leaks:  Yes  No Depth of casing leak(s): \_\_\_\_\_  
(depth) (depth)  
 Type Completion:  ALT. I  ALT. II Depth of:  DV Tool: \_\_\_\_\_ w / \_\_\_\_\_ sacks of cement  Port Collar: \_\_\_\_\_ w / \_\_\_\_\_ sack of cement  
(depth) (depth)  
 Packer Type: \_\_\_\_\_ Size: \_\_\_\_\_ Inch Set at: \_\_\_\_\_ Feet  
 Total Depth: \_\_\_\_\_ Plug Back Depth: \_\_\_\_\_ Plug Back Method: \_\_\_\_\_

**Geological Data:**

| Formation Name | Formation Top | Formation Base | Completion Information   |
|----------------|---------------|----------------|--|
| 1. _____       | At: _____     | to _____ Feet  | Perforation Interval _____ to _____ Feet or Open Hole Interval _____ to _____ Feet |
| 2. _____       | At: _____     | to _____ Feet  | Perforation Interval _____ to _____ Feet or Open Hole Interval _____ to _____ Feet |

UNDER PENALTY OF PERJURY I HEREBY ATTEST THAT THE INFORMATION CONTAINED HEREIN IS TRUE AND CORRECT TO THE BEST OF MY KNOWLEDGE

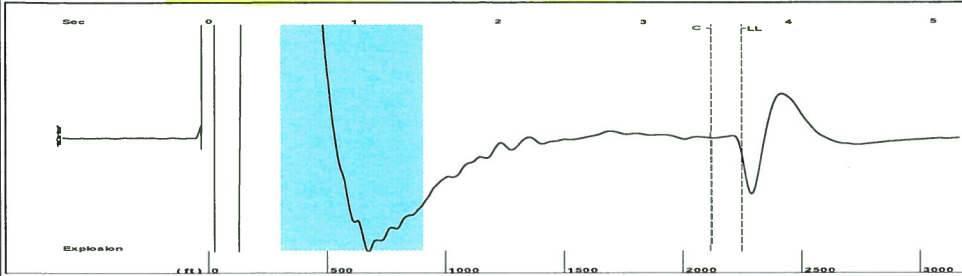
Submitted Electronically

|   |  |                |                     |                      |                                 |
|---|--|----------------|---------------------|----------------------|---------------------------------|
| <b>Do NOT Write in This Space - KCC USE ONLY</b>                                      | Date Tested: _____                         | Results: _____ | Date Plugged: _____ | Date Repaired: _____ | Date Put Back in Service: _____ |
|   | Review Completed by: _____ Comments: _____ |                |                     |                      |                                 |
| TA Approved: <input type="checkbox"/> Yes <input type="checkbox"/> Denied Date: _____ |  |                |                     |                      |                                 |

**Mail to the Appropriate KCC Conservation Office:**

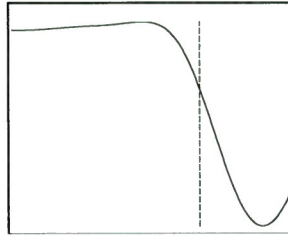
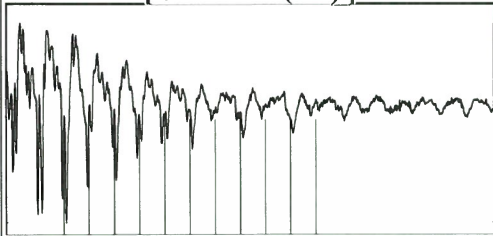
|  |  |                    |
|--|--|--------------------|
|  | KCC District Office #1 - 210 E. Frontview, Suite A, Dodge City, KS 67801               | Phone 620.225.8888 |
|  | KCC District Office #2 - 3450 N. Rock Road, Building 600, Suite 601, Wichita, KS 67226 | Phone 316.337.7400 |
|  | KCC District Office #3 - 1500 SW Seventh Steet, Chanute, KS 66720                      | Phone 620.432.2300 |
|  | KCC District Office #4 - 2301 E. 13th Street, Hays, KS 67601-2651                      | Phone 785.625.0550 |

Group: TAD WELLS Well: LOW A-3 (acquired on: 02/24/17 10:41:42)



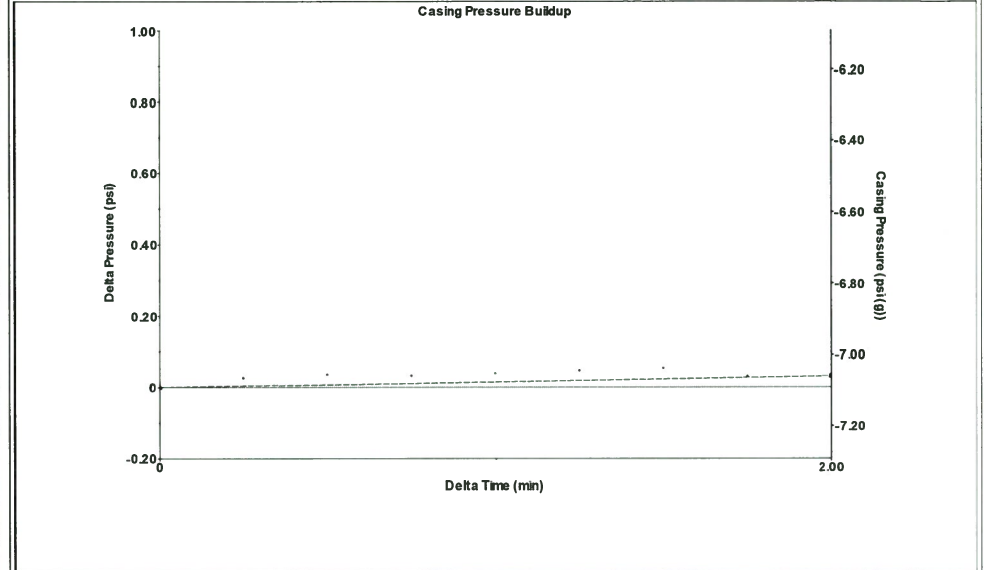
Filter Type High Pass Automatic Collar Count Yes Time 3.677 sec  
 Manual Acoustic Veloc 228.68 ft/s Manual JTS/sec 19.3798 Joints 70.8903 Jts  
 Depth 2247.22 ft

[ 0.5 to 1.5 (Sec) ]



Analysis Method: Automatic

Group: TAD WELLS Well: LOW A-3 (acquired on: 02/24/17 10:41:42)



Change in Pressure 0.03 psi PT9424  
 Change in Time 2.00 min Range 0 - ? psi

Group: TAD WELLS Well: LOW A-3 (acquired on: 02/24/17 10:41:42)

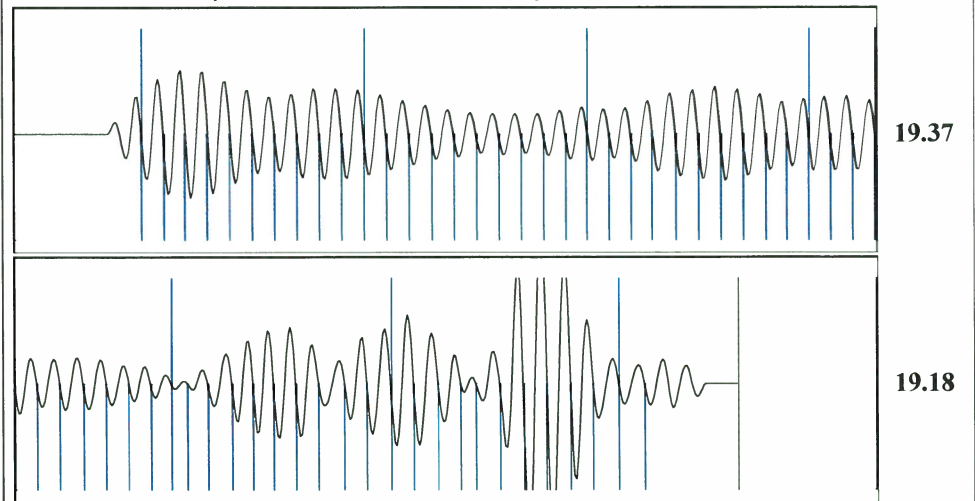
|                       |              |                               |                  |
|-----------------------|--------------|-------------------------------|------------------|
| Production            |              |                               |                  |
| Current               | Potential    | Casing Pressure               | Producing        |
| Oil - * -             | - * - BBL/D  | -7.1 psi (g)                  |                  |
| Water - * -           | - * - BBL/D  | Casing Pressure Buildup       | Annular Gas Flow |
| Gas - * -             | - * - Mscf/D | 0.0 psi                       | 0 Mscf/D         |
|                       |              | 2.00 min                      | % Liquid         |
|                       |              | Gas/Liquid Interface Pressure | 100 %            |
|                       |              | -6.6 psi (g)                  |                  |
| IPR Method            | Vogel        | Liquid Level Depth            |                  |
| PBHP/SBHP             | - * -        | 2247.22 ft                    |                  |
| Production Efficiency | 0.0          | Pump Intake Depth             |                  |
|                       |              | 2564.00 ft                    |                  |
| Oil 40 deg.API        |              | Formation Depth               |                  |
| Water 1.05 Sp.Gr.H2O  |              | 2846.00 ft                    |                  |
| Gas 0.78 Sp.Gr.AIR    |              |                               |                  |
| Acoustic Velocity     | 1222.31 ft/s |                               |                  |



Producing  
 Annular Gas Flow 0 Mscf/D  
 % Liquid 100 %  
 Pump Intake 101.5 psi (g)  
 Producing BHP 229.7 psi (g)  
 Static BHP - \* - psi (g)

Formation Submergence  
 Total Gaseous Liquid Column HT (TVD) 317 ft  
 Equivalent Gas Free Liquid HT (TVD) 317 ft  
 Acoustic Test

Group: TAD WELLS Well: LOW A-3 (acquired on: 02/24/17 10:41:42)



|                        |                 |                        |                    |
|------------------------|-----------------|------------------------|--------------------|
| Acoustic Velocity      | 1222.31 ft/s    | Joints counted         | 61                 |
| Joints Per Second      | 19.2794 jts/sec | Joints to liquid level | 70.8903            |
| Depth to liquid level  | 2247.22 ft      | Filter Width           | 17.3798            |
| Automatic Collar Count | Yes             | Time to 1st Collar     | 0.296 21.3798 3.46 |

February 28, 2017

Katherine McClurkan  
Merit Energy Company, LLC  
13727 Noel Road, Suite 1200  
Dallas, TX 75240

Re: Temporary Abandonment  
API 15-129-10205-00-01  
Low A 3  
NE/4 Sec.08-33S-40W  
Morton County, Kansas

Dear Katherine McClurkan:

"Your temporary abandonment (TA) application for the well listed above has been approved. In accordance with K.A.R. 82-3-111 the TA status of this well will expire 02/28/2018.

- \* If you return this well to service or plug it, please notify the District Office.
- \* If you sell this well you are required to file a Transfer of Operator form, T-1.
- \* If the well will remain temporarily abandoned, you must submit a new TA application, CP-111, before 02/28/2018.

You may contact me at the number above if you have questions.

Very truly yours,

Michael Maier"