



# TEMPORARY ABANDONMENT WELL APPLICATION

OPERATOR: License# \_\_\_\_\_  
 Name: \_\_\_\_\_  
 Address 1: \_\_\_\_\_  
 Address 2: \_\_\_\_\_  
 City: \_\_\_\_\_ State: \_\_\_\_\_ Zip: \_\_\_\_\_ + \_\_\_\_\_  
 Contact Person: \_\_\_\_\_  
 Phone: (\_\_\_\_\_) \_\_\_\_\_  
 Contact Person Email: \_\_\_\_\_  
 Field Contact Person: \_\_\_\_\_  
 Field Contact Person Phone: (\_\_\_\_\_) \_\_\_\_\_

API No. 15- \_\_\_\_\_  
 Spot Description: \_\_\_\_\_  
 \_\_\_\_\_ - \_\_\_\_\_ - \_\_\_\_\_ - \_\_\_\_\_ Sec. \_\_\_\_\_ Twp. \_\_\_\_\_ S. R. \_\_\_\_\_  E  W  
 \_\_\_\_\_ feet from  N /  S Line of Section  
 \_\_\_\_\_ feet from  E /  W Line of Section  
 GPS Location: Lat: \_\_\_\_\_, Long: \_\_\_\_\_  
(e.g. xx.xxxxx) (e.g. -xxx.xxxxx)  
 Datum:  NAD27  NAD83  WGS84  
 County: \_\_\_\_\_ Elevation: \_\_\_\_\_  GL  KB  
 Lease Name: \_\_\_\_\_ Well #: \_\_\_\_\_  
 Well Type: (check one)  Oil  Gas  OG  WSW  Other: \_\_\_\_\_  
 SWD Permit #: \_\_\_\_\_  ENHR Permit #: \_\_\_\_\_  
 Gas Storage Permit #: \_\_\_\_\_  
 Spud Date: \_\_\_\_\_ Date Shut-In: \_\_\_\_\_

	Conductor	Surface	Production	Intermediate	Liner	Tubing
Size						
Setting Depth						
Amount of Cement						
Top of Cement						
Bottom of Cement						

Casing Fluid Level from Surface: \_\_\_\_\_ How Determined? \_\_\_\_\_ Date: \_\_\_\_\_  
 Casing Squeeze(s): \_\_\_\_\_ to \_\_\_\_\_ w / \_\_\_\_\_ sacks of cement, \_\_\_\_\_ to \_\_\_\_\_ w / \_\_\_\_\_ sacks of cement. Date: \_\_\_\_\_  
(top) (bottom) (top) (bottom)  
 Do you have a valid Oil & Gas Lease?  Yes  No  
 Depth and Type:  Junk in Hole at \_\_\_\_\_  Tools in Hole at \_\_\_\_\_ Casing Leaks:  Yes  No Depth of casing leak(s): \_\_\_\_\_  
(depth) (depth)  
 Type Completion:  ALT. I  ALT. II Depth of:  DV Tool: \_\_\_\_\_ w / \_\_\_\_\_ sacks of cement  Port Collar: \_\_\_\_\_ w / \_\_\_\_\_ sack of cement  
(depth) (depth)  
 Packer Type: \_\_\_\_\_ Size: \_\_\_\_\_ Inch Set at: \_\_\_\_\_ Feet  
 Total Depth: \_\_\_\_\_ Plug Back Depth: \_\_\_\_\_ Plug Back Method: \_\_\_\_\_

**Geological Data:**

Formation Name	Formation Top	Formation Base	Completion Information
1. _____	At: _____	to _____ Feet	Perforation Interval _____ to _____ Feet or Open Hole Interval _____ to _____ Feet
2. _____	At: _____	to _____ Feet	Perforation Interval _____ to _____ Feet or Open Hole Interval _____ to _____ Feet

UNDER PENALTY OF PERJURY I HEREBY ATTEST THAT THE INFORMATION CONTAINED HEREIN IS TRUE AND CORRECT TO THE BEST OF MY KNOWLEDGE

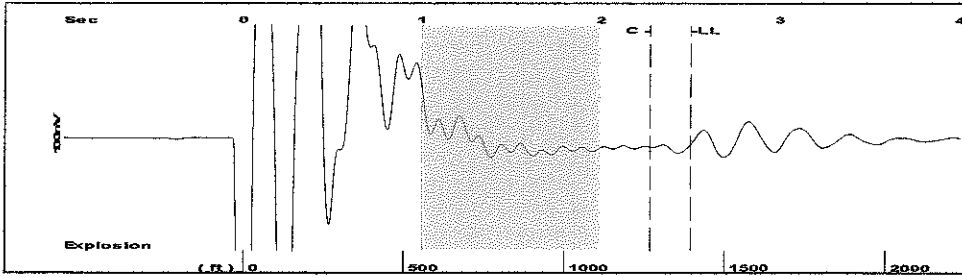
Submitted Electronically

<b>Do NOT Write in This Space - KCC USE ONLY</b>	Date Tested: _____	Results: _____	Date Plugged: _____	Date Repaired: _____	Date Put Back in Service: _____
	Review Completed by: _____ Comments: _____				
TA Approved: <input type="checkbox"/> Yes <input type="checkbox"/> Denied Date: _____					

**Mail to the Appropriate KCC Conservation Office:**

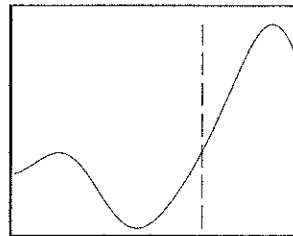
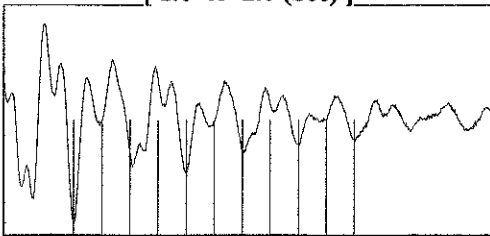
	KCC District Office #1 - 210 E. Frontview, Suite A, Dodge City, KS 67801	Phone 620.225.8888
	KCC District Office #2 - 3450 N. Rock Road, Building 600, Suite 601, Wichita, KS 67226	Phone 316.337.7400
	KCC District Office #3 - 1500 SW Seventh Steet, Chanute, KS 66720	Phone 620.432.2300
	KCC District Office #4 - 2301 E. 13th Street, Hays, KS 67601-2651	Phone 785.625.0550

Group: MyWells Well: DANIELS 1-25 (acquired on: 01/23/17 07:48:23 )



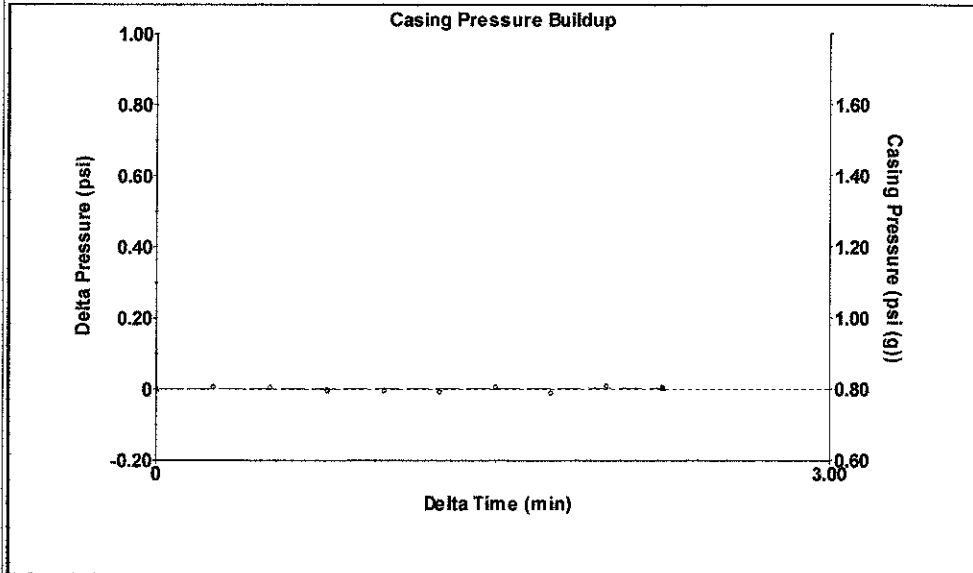
Filter Type High Pass Automatic Collar Count Yes Time 2.5 sec  
 Manual Acoustic Velo 1102.61 ft/s Manual JTS/sec 17.3913 Joints 43.9602 Jts  
 Depth 1393.54 ft

[ 1.0 to 2.0 (Sec) ]



Analysis Method: Automatic

Group: MyWells Well: DANIELS 1-25 (acquired on: 01/23/17 07:48:23 )

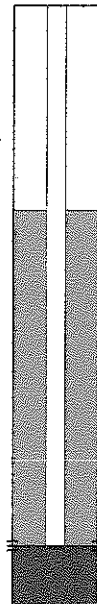


Change in Pressure 0.00 psi PT12865  
 Range 0 - ? psi  
 Change in Time 2.25 min

Group: MyWells Well: DANIELS 1-25 (acquired on: 01/23/17 07:48:23 )

Production  
 Current Potential  
 Oil - \* - - \* - BBL/D  
 Water - \* - - \* - BBL/D  
 Gas - \* - - \* - Mscf/D  
 IPR Method Vogel  
 PBHP/SBHP - \* -  
 Production Efficiency 0.0  
 Oil 40 deg.API  
 Water 1.05 Sp.Gr.H2O  
 Gas 0.86 Sp.Gr.AIR  
 Acoustic Velocity 1114.83 ft/s

Casing Pressure 0.8 psi (g)  
 Casing Pressure Buildup 0.004 psi  
 2.25 min  
 Gas/Liquid Interface Pressure 1.5 psi (g)  
 Liquid Level Depth 1393.54 ft  
 Pump Intake Depth 4632.00 ft  
 Formation Depth 4632.00 ft

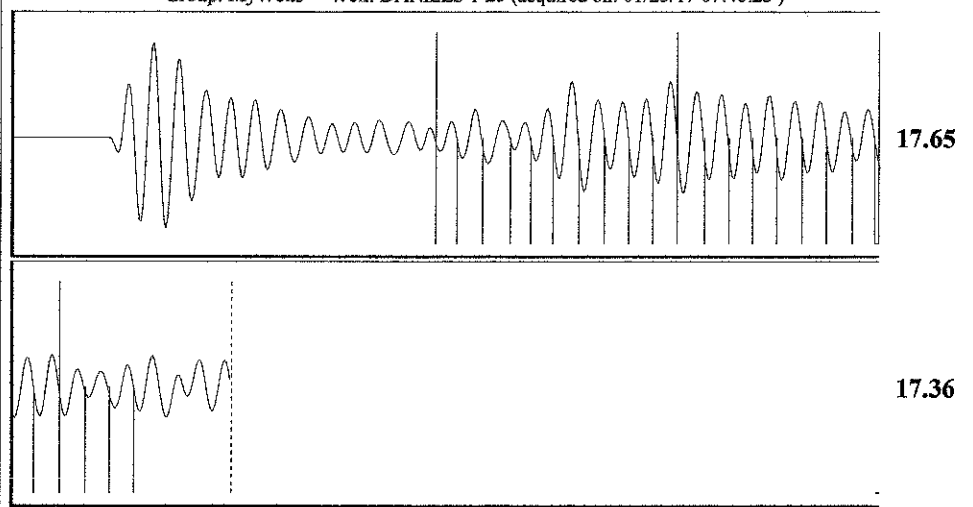


Producing  
 Annular Gas Flow 0 Mscf/D  
 % Liquid 100 %  
 Pump Intake 1061.9 psi (g)  
 Producing BHP 1061.9 psi (g)  
 Static BHP - \* - psi (g)

Formation Submergence  
 Total Gaseous Liquid Column HT (TVD) 3238 ft  
 Equivalent Gas Free Liquid HT (TVD) 3238 ft

Acoustic Test

Group: MyWells Well: DANIELS 1-25 (acquired on: 01/23/17 07:48:23 )



Acoustic Velocity 1114.83 ft/s Joints counted 23  
 Joints Per Second 17.5841 jts/sec Joints to liquid level 43.9602  
 Depth to liquid level 1393.54 ft Filter Width 15.3913 19.3913  
 Automatic Collar Count Yes Time to 1st Collar 0.968 2.276

March 14, 2017

Melody C. Fletcher  
Oil Producers Inc. of Kansas  
1710 WATERFRONT PKWY  
WICHITA, KS 67206-6603

Re: Temporary Abandonment  
API 15-081-20387-00-00  
DANIELS 1-25  
NW/4 Sec.25-29S-33W  
Haskell County, Kansas

Dear Melody C. Fletcher:

"Your temporary abandonment (TA) application for the well listed above has been approved. In accordance with K.A.R. 82-3-111 the TA status of this well will expire 03/14/2018.

- \* If you return this well to service or plug it, please notify the District Office.
- \* If you sell this well you are required to file a Transfer of Operator form, T-1.
- \* If the well will remain temporarily abandoned, you must submit a new TA application, CP-111, before 03/14/2018.

You may contact me at the number above if you have questions.

Very truly yours,

Michael Maier"