



TEMPORARY ABANDONMENT WELL APPLICATION

OPERATOR: License# _____
 Name: _____
 Address 1: _____
 Address 2: _____
 City: _____ State: _____ Zip: _____ + _____
 Contact Person: _____
 Phone: (_____) _____
 Contact Person Email: _____
 Field Contact Person: _____
 Field Contact Person Phone: (_____) _____

API No. 15- _____
 Spot Description: _____
 _____ - _____ - _____ - _____ Sec. _____ Twp. _____ S. R. _____ E W
 _____ feet from N / S Line of Section
 _____ feet from E / W Line of Section
 GPS Location: Lat: _____, Long: _____
(e.g. xx.xxxxx) (e.g. -xxx.xxxxx)
 Datum: NAD27 NAD83 WGS84
 County: _____ Elevation: _____ GL KB
 Lease Name: _____ Well #: _____
 Well Type: (check one) Oil Gas OG WSW Other: _____
 SWD Permit #: _____ ENHR Permit #: _____
 Gas Storage Permit #: _____
 Spud Date: _____ Date Shut-In: _____

| | Conductor | Surface | Production | Intermediate | Liner | Tubing |
|------------------|-----------|---------|------------|--------------|-------|--------|
| Size | | | | | | |
| Setting Depth | | | | | | |
| Amount of Cement | | | | | | |
| Top of Cement | | | | | | |
| Bottom of Cement | | | | | | |

Casing Fluid Level from Surface: _____ How Determined? _____ Date: _____
 Casing Squeeze(s): _____ to _____ w / _____ sacks of cement, _____ to _____ w / _____ sacks of cement. Date: _____
(top) (bottom) (top) (bottom)
 Do you have a valid Oil & Gas Lease? Yes No
 Depth and Type: Junk in Hole at _____ Tools in Hole at _____ Casing Leaks: Yes No Depth of casing leak(s): _____
(depth) (depth)
 Type Completion: ALT. I ALT. II Depth of: DV Tool: _____ w / _____ sacks of cement Port Collar: _____ w / _____ sack of cement
(depth) (depth)
 Packer Type: _____ Size: _____ Inch Set at: _____ Feet
 Total Depth: _____ Plug Back Depth: _____ Plug Back Method: _____

Geological Data:

| Formation Name | Formation Top | Formation Base | Completion Information |
|----------------|---------------|----------------|--|
| 1. _____ | At: _____ | to _____ Feet | Perforation Interval _____ to _____ Feet or Open Hole Interval _____ to _____ Feet |
| 2. _____ | At: _____ | to _____ Feet | Perforation Interval _____ to _____ Feet or Open Hole Interval _____ to _____ Feet |

UNDER PENALTY OF PERJURY I HEREBY ATTEST THAT THE INFORMATION CONTAINED HEREIN IS TRUE AND CORRECT TO THE BEST OF MY KNOWLEDGE

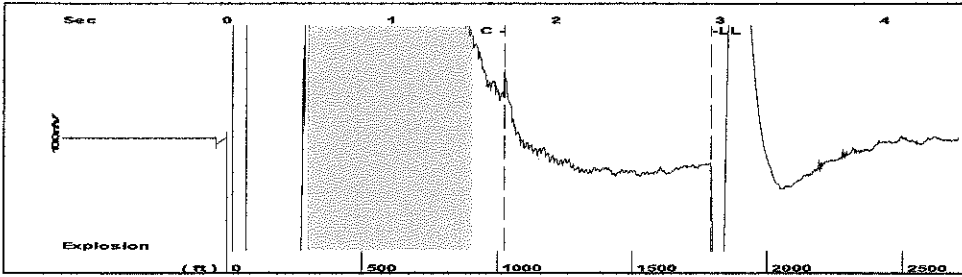
Submitted Electronically

| | | | | | |
|---|--|----------------|---------------------|----------------------|---------------------------------|
| Do NOT Write in This Space - KCC USE ONLY | Date Tested: _____ | Results: _____ | Date Plugged: _____ | Date Repaired: _____ | Date Put Back in Service: _____ |
| | Review Completed by: _____ Comments: _____ | | | | |
| TA Approved: <input type="checkbox"/> Yes <input type="checkbox"/> Denied Date: _____ | | | | | |

Mail to the Appropriate KCC Conservation Office:

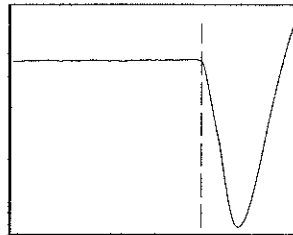
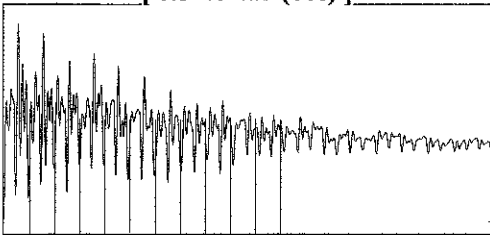
| | | |
|--|--|--------------------|
| | KCC District Office #1 - 210 E. Frontview, Suite A, Dodge City, KS 67801 | Phone 620.225.8888 |
| | KCC District Office #2 - 3450 N. Rock Road, Building 600, Suite 601, Wichita, KS 67226 | Phone 316.337.7400 |
| | KCC District Office #3 - 1500 SW Seventh Steet, Chanute, KS 66720 | Phone 620.432.2300 |
| | KCC District Office #4 - 2301 E. 13th Street, Hays, KS 67601-2651 | Phone 785.625.0550 |

Group: MyWells Well: MLP Muncy-A # 1 (acquired on: 02/22/17 08:42:51)



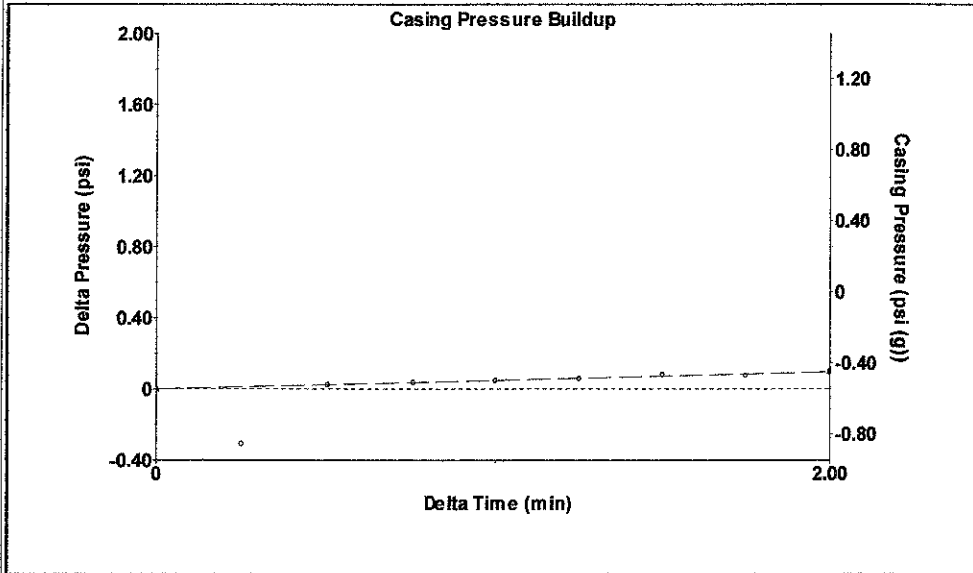
Filter Type High Pass Automatic Collar Count Yes Time 2.949 sec
 Manual Acoustic Velo 1233.46 ft/s Manual JTS/sec 19.4553 Joints 56.5504 Jts
 Depth 1792.65 ft

[0.5 to 1.5 (Sec)]



Analysis Method: Automatic

Group: MyWells Well: MLP Muncy-A # 1 (acquired on: 02/22/17 08:42:51)

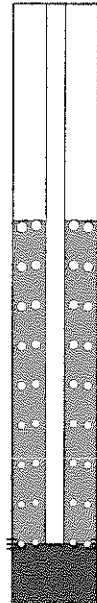


Change in Pressure 0.10 psi PT12865
 Range 0 - ? psi
 Change in Time 2.00 min

Group: MyWells Well: MLP Muncy-A # 1 (acquired on: 02/22/17 08:42:51)

Production
 Current Potential
 Oil - * - - * - BBL/D
 Water - * - - * - BBL/D
 Gas - * - - * - Mscf/D
 IPR Method Vogel
 PBHP/SBHP - * -
 Production Efficiency 0.0
 Oil 40 deg.API
 Water 1.05 Sp.Gr.H2O
 Gas 0.76 Sp.Gr.AIR
 Acoustic Velocity 1215.77 ft/s

Casing Pressure -0.5 psi (g)
 Casing Pressure Buildup 0.096 psi
 2.00 min
 Gas/Liquid Interface Pressure 0.1 psi (g)
 Liquid Level Depth 1792.65 ft
 Pump Intake Depth 5489.00 ft
 Formation Depth 5489.00 ft

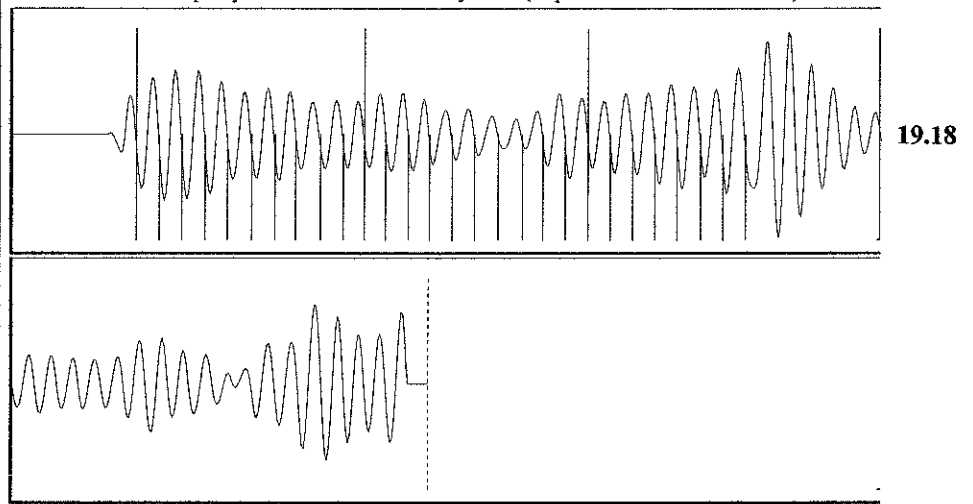


Producing
 Annular Gas Flow 1 Mscf/D
 % Liquid 98 %
 Pump Intake 1177.3 psi (g)
 Producing BHP 1177.3 psi (g)
 Static BHP - * - psi (g)

Formation Submergence
 Total Gaseous Liquid Column HT (TVD) 3696 ft
 Equivalent Gas Free Liquid HT (TVD) 3608 ft

Acoustic Test

Group: MyWells Well: MLP Muncy-A # 1 (acquired on: 02/22/17 08:42:51)



Acoustic Velocity 1215.77 ft/s Joints counted 27
 Joints Per Second 19.1761 jts/sec Joints to liquid level 56.5504
 Depth to liquid level 1792.65 ft Filter Width 17.4553 21.4553
 Automatic Collar Count Yes Time to 1st Collar 0.28 1.688

March 14, 2017

MELODY C. FLETCHER
Oil Producers, Inc. of Kansas
1710 WATERFRONT PKWY
WICHITA, KS 67206-6603

Re: Temporary Abandonment
API 15-189-22302-00-00
MLP MUNCY A 1
NW/4 Sec.14-31S-39W
Stevens County, Kansas

Dear MELODY C. FLETCHER:

"Your temporary abandonment (TA) application for the well listed above has been approved. In accordance with K.A.R. 82-3-111 the TA status of this well will expire 03/14/2018.

- * If you return this well to service or plug it, please notify the District Office.
- * If you sell this well you are required to file a Transfer of Operator form, T-1.
- * If the well will remain temporarily abandoned, you must submit a new TA application, CP-111, before 03/14/2018.

You may contact me at the number above if you have questions.

Very truly yours,

Michael Maier"