



# TEMPORARY ABANDONMENT WELL APPLICATION

OPERATOR: License# \_\_\_\_\_  
 Name: \_\_\_\_\_  
 Address 1: \_\_\_\_\_  
 Address 2: \_\_\_\_\_  
 City: \_\_\_\_\_ State: \_\_\_\_\_ Zip: \_\_\_\_\_ + \_\_\_\_\_  
 Contact Person: \_\_\_\_\_  
 Phone: (\_\_\_\_\_) \_\_\_\_\_  
 Contact Person Email: \_\_\_\_\_  
 Field Contact Person: \_\_\_\_\_  
 Field Contact Person Phone: (\_\_\_\_\_) \_\_\_\_\_

API No. 15- \_\_\_\_\_  
 Spot Description: \_\_\_\_\_  
 \_\_\_\_\_ - \_\_\_\_\_ - \_\_\_\_\_ - \_\_\_\_\_ Sec. \_\_\_\_\_ Twp. \_\_\_\_\_ S. R. \_\_\_\_\_  E  W  
 \_\_\_\_\_ feet from  N /  S Line of Section  
 \_\_\_\_\_ feet from  E /  W Line of Section  
 GPS Location: Lat: \_\_\_\_\_, Long: \_\_\_\_\_  
(e.g. xx.xxxxx) (e.g. -xxx.xxxxx)  
 Datum:  NAD27  NAD83  WGS84  
 County: \_\_\_\_\_ Elevation: \_\_\_\_\_  GL  KB  
 Lease Name: \_\_\_\_\_ Well #: \_\_\_\_\_  
 Well Type: (check one)  Oil  Gas  OG  WSW  Other: \_\_\_\_\_  
 SWD Permit #: \_\_\_\_\_  ENHR Permit #: \_\_\_\_\_  
 Gas Storage Permit #: \_\_\_\_\_  
 Spud Date: \_\_\_\_\_ Date Shut-In: \_\_\_\_\_

	Conductor	Surface	Production	Intermediate	Liner	Tubing
Size						
Setting Depth						
Amount of Cement						
Top of Cement						
Bottom of Cement						

Casing Fluid Level from Surface: \_\_\_\_\_ How Determined? \_\_\_\_\_ Date: \_\_\_\_\_  
 Casing Squeeze(s): \_\_\_\_\_ to \_\_\_\_\_ w / \_\_\_\_\_ sacks of cement, \_\_\_\_\_ to \_\_\_\_\_ w / \_\_\_\_\_ sacks of cement. Date: \_\_\_\_\_  
(top) (bottom) (top) (bottom)  
 Do you have a valid Oil & Gas Lease?  Yes  No  
 Depth and Type:  Junk in Hole at \_\_\_\_\_  Tools in Hole at \_\_\_\_\_ Casing Leaks:  Yes  No Depth of casing leak(s): \_\_\_\_\_  
(depth) (depth)  
 Type Completion:  ALT. I  ALT. II Depth of:  DV Tool: \_\_\_\_\_ w / \_\_\_\_\_ sacks of cement  Port Collar: \_\_\_\_\_ w / \_\_\_\_\_ sack of cement  
(depth) (depth)  
 Packer Type: \_\_\_\_\_ Size: \_\_\_\_\_ Inch Set at: \_\_\_\_\_ Feet  
 Total Depth: \_\_\_\_\_ Plug Back Depth: \_\_\_\_\_ Plug Back Method: \_\_\_\_\_

**Geological Data:**

Formation Name	Formation Top	Formation Base	Completion Information
1. _____	At: _____	to _____ Feet	Perforation Interval _____ to _____ Feet or Open Hole Interval _____ to _____ Feet
2. _____	At: _____	to _____ Feet	Perforation Interval _____ to _____ Feet or Open Hole Interval _____ to _____ Feet

UNDER PENALTY OF PERJURY I HEREBY ATTEST THAT THE INFORMATION CONTAINED HEREIN IS TRUE AND CORRECT TO THE BEST OF MY KNOWLEDGE

Submitted Electronically

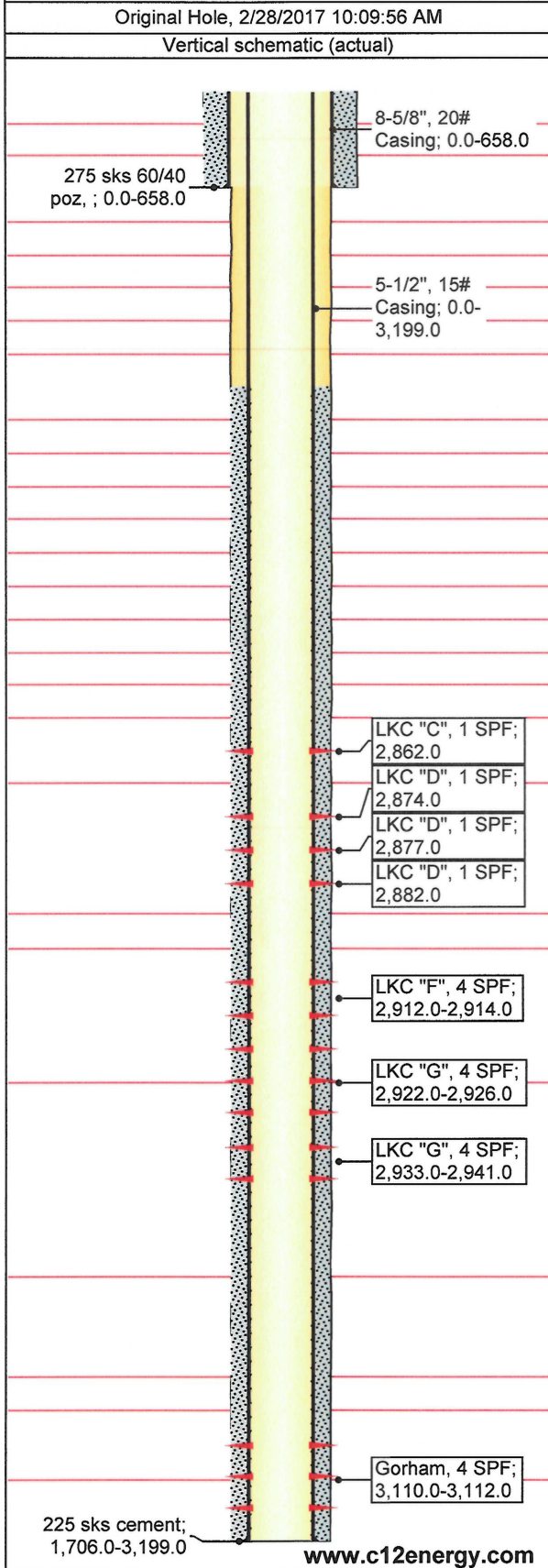
<b>Do NOT Write in This Space - KCC USE ONLY</b>	Date Tested: _____	Results: _____	Date Plugged: _____	Date Repaired: _____	Date Put Back in Service: _____
	Review Completed by: _____ Comments: _____				
TA Approved: <input type="checkbox"/> Yes <input type="checkbox"/> Denied Date: _____					

**Mail to the Appropriate KCC Conservation Office:**

	KCC District Office #1 - 210 E. Frontview, Suite A, Dodge City, KS 67801	Phone 620.225.8888
	KCC District Office #2 - 3450 N. Rock Road, Building 600, Suite 601, Wichita, KS 67226	Phone 316.337.7400
	KCC District Office #3 - 1500 SW Seventh Steet, Chanute, KS 66720	Phone 620.432.2300
	KCC District Office #4 - 2301 E. 13th Street, Hays, KS 67601-2651	Phone 785.625.0550

API/UWI 15-167-22908	Operator C12: Kansas Oil, LLC	Well Status Pumping Oil	License #
Rig Release Date 6/30/1990	Surface Legal Location 14S 13W Sec 31 C E2 NW	Latitude (°) 38° 47' 41.342" N	Longitude (°) 98° 48' 37.135" W
Abandon Date 1/1/1900	Original KB Elevation (ft) 1,711.00	Total Depth (ftKB) 3,199.0	PBTD (All) (ftKB)

Comment



**Fluid Level Tests**

Date 5/28/2015	Fluid Level (ftKB) 776.0
-------------------	-----------------------------

**Rod Pump Details**

Current Stroke Length (in) 12 1/4	Strokes Per Minute (spm) 0.0
--------------------------------------	---------------------------------

**Wellbore Sections**

Section Description	Size (in)	Actual Top Depth (ftKB)	Actual Btm Depth (ftKB)
8-5/8", 20# Casing	12 1/4	0.0	658.0
5-1/2", 15# Casing	7 7/8	658.0	3,199.0

**Casing Components**

Item Description	ID (in)	Grade	Joints	Length (ft)	Btm (ftKB)
8-5/8", 20# Casing	8.097	J-55	15	658.00	658.0
5-1/2", 15# Casing	5.012	J-55	78	3,199.04	3,199.0

**Tubing Components**

Item Description	OD (in)	Wt (lb/ft)	Grade	Joints	Length (ft)	Btm (ftKB)
------------------	---------	------------	-------	--------	-------------	------------

**Rod Components**

Item Description	OD (in)	Wt (lb/ft)	Grade	Joints	Length (ft)	Btm (ftKB)
------------------	---------	------------	-------	--------	-------------	------------

**Stimulations & Treatments**

Date 6/27/1990	Type 4000 gal 28% acid	Min Top Depth (ftKB) 2,862.0	Max Btm Depth (ftKB) 2,874.0
Max Treat Pressure (psi)	Avg Treat Pressure (psi)	Max Treat Rate (gpm)	Avg Treat Rate (gpm)

Stim/Treat Fluid

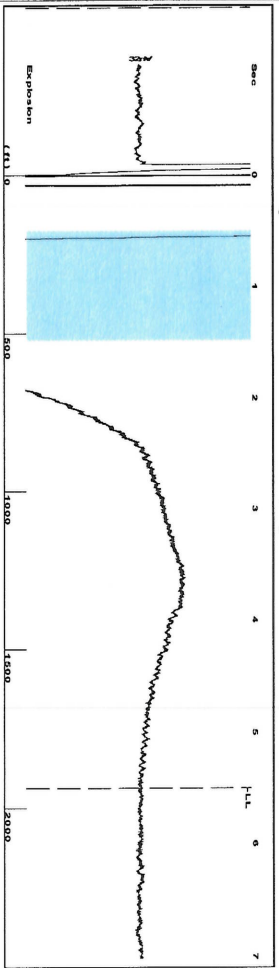
Date 6/22/1990	Type 6000 gal 28% acid	Min Top Depth (ftKB) 2,913.0	Max Btm Depth (ftKB) 2,939.0
Max Treat Pressure (psi)	Avg Treat Pressure (psi)	Max Treat Rate (gpm)	Avg Treat Rate (gpm)

Stim/Treat Fluid

Date 6/21/1990	Type 2500 gal 28% acid	Min Top Depth (ftKB) 2,924.0	Max Btm Depth (ftKB) 2,941.0
Max Treat Pressure (psi)	Avg Treat Pressure (psi)	Max Treat Rate (gpm)	Avg Treat Rate (gpm)

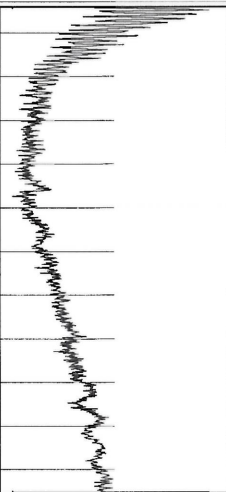
Stim/Treat Fluid

Group: L Miller Well: L Miller 43-31 (acquired on: 02/20/17 10:46:16)



Filter Type High Pass Automatic Collar Count Yes  
 Manual Acoustic Velo/703.663 ft/s Manual JTS/sec 11.0988  
 Time 5.506 sec  
 Joints 61.1099 Jts  
 Depth 1937.18 ft

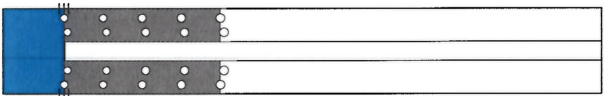
[ 0.5 to 1.5 (Sec) ]



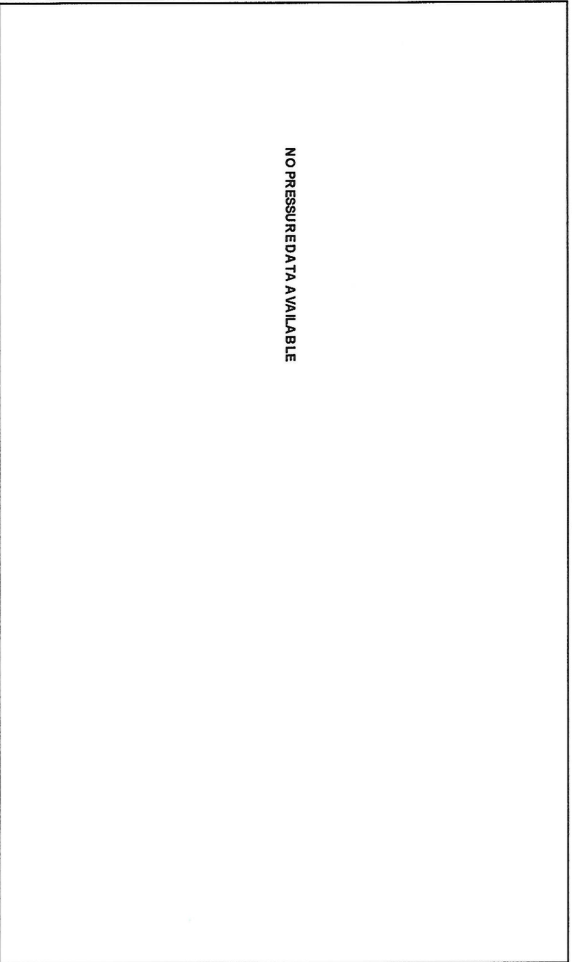
Analysis Method: Manual

Group: L Miller Well: L Miller 43-31 (acquired on: 02/20/17 10:46:16)

Production Current	Potential	Casing Pressure	Producing
Oil 2	2.0 BBL/D	6.5 psi (g)	Annular 1686 Mscf/D
Water 148	151.2 BBL/D	Casing Pressure Buildup 202.3 psi	Gas Flow % Liquid 19 %
Gas 0.0	0.0 Mscf/D	2.75 min	
IPR Method PBHP/SBHP	Vogel 0.08	Gas/Liquid Interface Pressure 8.4 psi (g)	
Production Efficiency	97.9		
Oil 36 deg.API		Liquid Level Depth 1937.18 ft	
Water 1.05 Sp.Gr.H2O		Pump Intake Depth 2890.00 ft	
Gas 1.24 Sp.Gr.AIR		Formation Depth 2893.00 ft	
Acoustic Velocity	703.663 ft/s		
Formation Submergence			
Total Gaseous Liquid Column HT (TVVD)	953 ft		
Equivalent Gas Free Liquid HT (TVVD)	178 ft		
Acoustic Test			

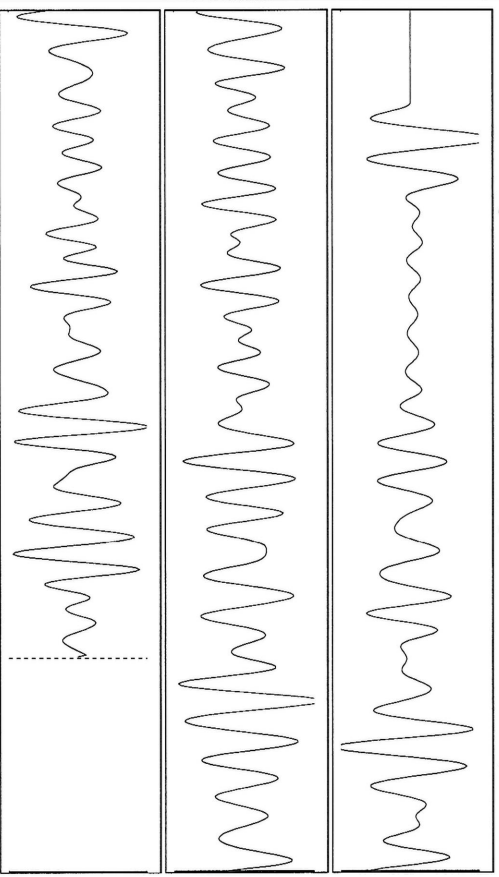


Group: L Miller Well: L Miller 43-31 (acquired on: 02/20/17 10:46:16)



Change in Pressure 202.33 psi PT 15086  
 Change in Time 2.75 min Range 0 - ? psi

Group: L Miller Well: L Miller 43-31 (acquired on: 02/20/17 10:46:16)



Acoustic Velocity ft/s Joints counted 1  
 Joints Per Second ft/sec Joints to liquid level 1  
 Depth to liquid level ft Filter Width 9.09878  
 Automatic Collar Count Yes Time to 1st Collar 13.0988

March 06, 2017

Parker Stevens  
C12 Kansas Oil, LLC  
1900 WAZEE ST.  
SUITE 200  
DENVER, CO 80202

Re: Temporary Abandonment  
API 15-167-22908-00-00  
L MILLER 43-31  
NW/4 Sec.31-14S-13W  
Russell County, Kansas

Dear Parker Stevens:

"Your temporary abandonment (TA) application for the well listed above has been approved. In accordance with K.A.R. 82-3-111 the TA status of this well will expire 03/06/2018.

- \* If you return this well to service or plug it, please notify the District Office.
- \* If you sell this well you are required to file a Transfer of Operator form, T-1.
- \* If the well will remain temporarily abandoned, you must submit a new TA application, CP-111, before 03/06/2018.

You may contact me at the number above if you have questions.

Very truly yours,

Richard Williams"