



# Fall & Associates

Stake and Elevation Service

P.O. Box 222

Pretty Prairie, KS. 67570

785-243-7506

Date 1-20-17

Invoice Number 0112171

MURFIN DRILLING

1-20

Hamit

Operator

Number

Farm Name

Rooks-KS

20

6s

19w

930'FSL 330'FWL

County-State

S

T

R

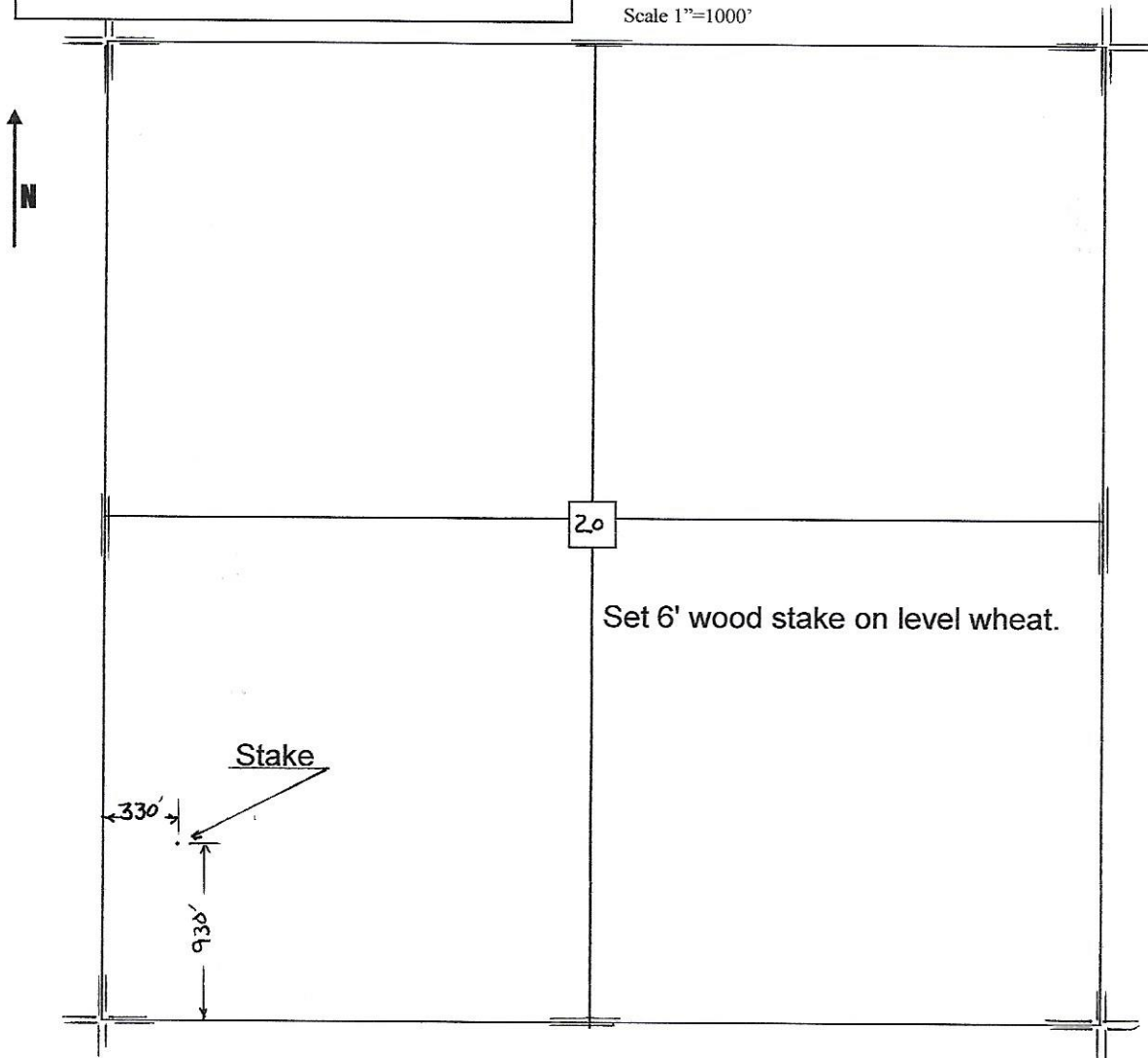
Location

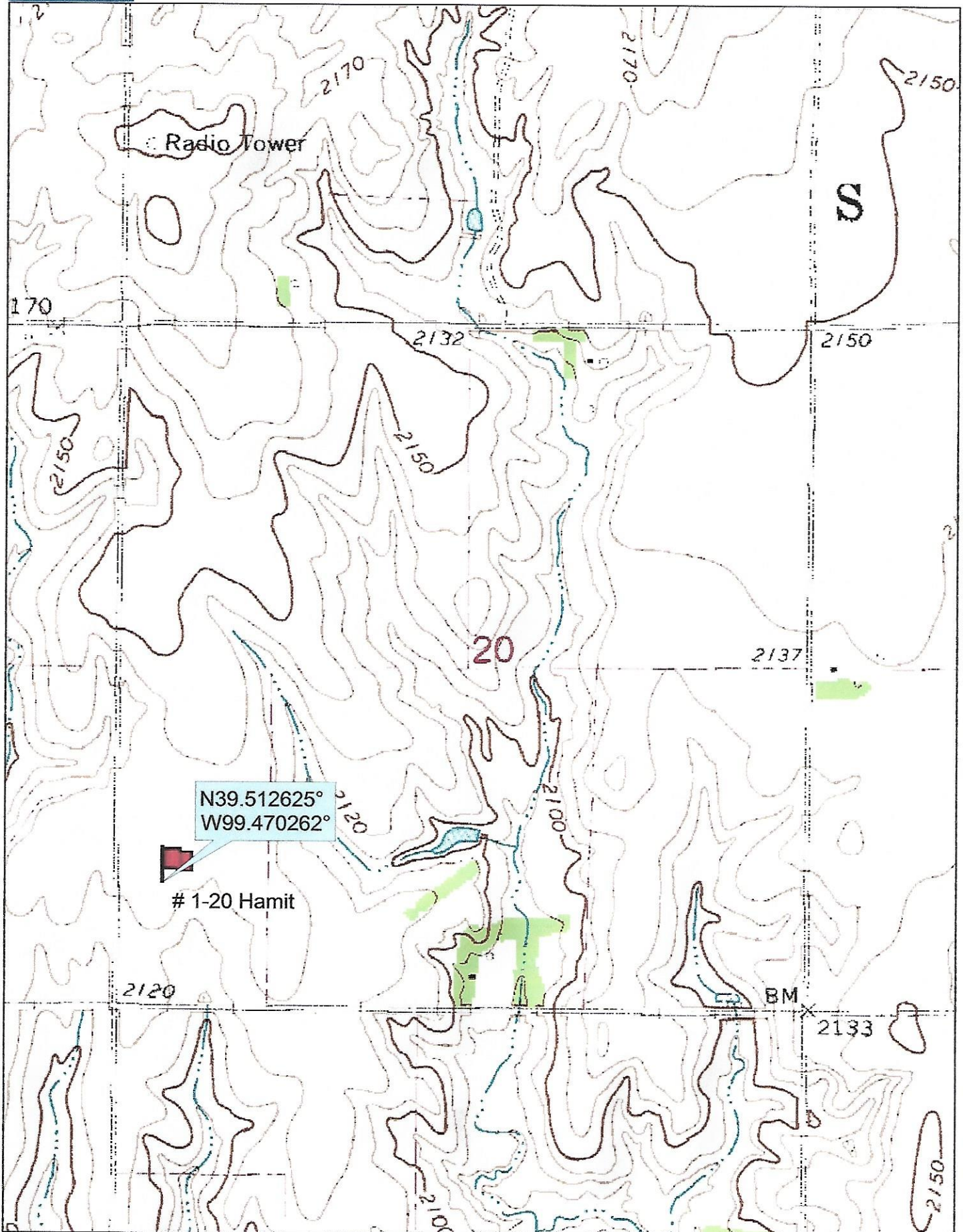
Murfin Drilling  
250 N. Water  
Suite 300  
Wichita, KS. 67202

Elevation 2129 Gr.

Ordered By: Shauna

Scale 1"=1000'

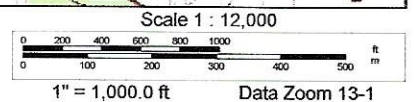




Data use subject to license.

© DeLorme. Topo North America™ 9.

www.delorme.com



Data Zoom 13-1