

**OPERATOR**

Company: STARLIGHT EXPLORATION, LLC  
 Address: 2408 MAIN STREET, APT. B  
 HAYS, KANSAS 67601

Contact Geologist: JARED WERTH  
 Contact Phone Nbr: 816-943-6544  
 Well Name: WILD VINCE # 1  
 Location: NW NW NW SEC.35-T9S-R32W  
 API: 15-193-20,969-00-00  
 Pool: WILDCAT  
 State: KANSAS  
 Field: UNNAMED  
 Country: USA

**Scale 1:240 Imperial**

Well Name: WILD VINCE # 1  
 Surface Location: NW NW NW SEC.35-T9S-R32W  
 Bottom Location:  
 API: 15-193-20,969-00-00  
 License Number: 35337  
 Spud Date: 1/25/2017 Time: 12:17 PM  
 Region: THOMAS COUNTY  
 Drilling Completed: 2/3/2017 Time: 10:19 PM  
 Surface Coordinates: 412' FNL & 537' FWL  
 Bottom Hole Coordinates:  
 Ground Elevation: 3071.00ft  
 K.B. Elevation: 3077.00ft  
 Logged Interval: 0.00ft To: 0.00ft  
 Total Depth: 4650.00ft  
 Formation: LANSING-KANSAS CITY  
 Drilling Fluid Type: CHEMICAL/FRESH WATER GEL

**SURFACE CO-ORDINATES**

Well Type: Vertical  
 Longitude: -100.8679264  
 Latitude: 39.2336297  
 N/S Co-ord: 412' FNL  
 E/W Co-ord: 537' FWL

**LOGGED BY**

Company: SOLUTIONS CONSULTING, INC.  
 Address: 108 W 35TH  
 HAYS, KS 67601

Phone Nbr: (785) 639-1337  
 Logged By: GEOLOGIST Name: HERB DEINES

**CONTRACTOR**

Contractor: ROYAL DRILLING, INC.  
 Rig #: 1  
 Rig Type: MUD ROTARY  
 Spud Date: 1/25/2017 Time: 12:17 PM  
 TD Date: 2/3/2017 Time: 10:19 PM  
 Rig Release: 2/4/2017 Time: 7:00 AM

**ELEVATIONS**

K.B. Elevation: 3077.00ft Ground Elevation: 3071.00ft  
 K.B. to Ground: 6.00ft

**NOTES**

THE PRIMARY LKC ZONES IN THE "I" AND "J" AND THE PAWNEE AND MYRICK STATION ZONES WERE DRILL STEM TESTED WITH NEGATIVE RESULTS. THE WELL WAS DRILLED DEEPER TO EVALUATE THE FORT

SCOTT, CHEROKEE AND JOHNSON ZONE. WHILE THERE WAS A SMALL SHOW OF HEAVY OIL IN THE JOHNSON ZONE, IT WAS DEEMED TO BE IN A POORLY DEVELOPED ZONE. THE DECISION WAS MADE BY ALL THAT THE WELL BE PLUGGED AND ABANDONED WITH NO FURTHER TESTING OR LOGGING.

DRILL STEM TESTING BY DIAMOND TESTING: TWO CONVENTIONAL TESTS.

NO OPEN HOLE LOGS WERE RAN ON THIS WELL.

<b>WILD VINCE #1</b>	<b>HOWARD TRUST #1-26</b>	<b>HOWARD # 1</b>
<b>SE NW NW NW</b>	<b>SW SE SW</b>	<b>NW SW</b>
<b>SEC.35-9S-32W</b>	<b>SEC.26-9-32W</b>	<b>SEC.26-9-32W</b>
<b>3071'GL 3077'KB</b>	<b>KB 3062'</b>	<b>KB 3063'</b>

<u>FORMATION</u>	<u>LOG TOPS</u>	<u>LOG TOPS</u>	<u>LOG TOPS</u>
Anhydrite	2636 +441	+ 434	+ 447
B-Anhydrite	2664 +413	+ 406	+419
Heebner Shale	4042 -965	-970	-956
LKC	4077-1000	-1009	-993
BKC	4351-1274	-1282	-1267
Marmaton	4378-1301	-1309	-1290
Pawnee	4484-1407	-1408	-1393
Myrick Station	4527-1450	-1451	-1432
Ft. Scott	4546-1469	-1474	-1454
Cherokee Shale	4578-1501	-1505	-1484
Johnson Zone	4621-1544	-1546	-1525
RTD	4650-1573	-1607	-1607

#### SUMMARY OF DAILY ACTIVITY

1-25-17 Spud, drill to set surface casing, problems with sand

1-26-17 293', set 8 5/8" surface casing to 283' w/ 320 sxs 80/20 pos 2%Gel 3%CC, plug down 4:30 PM, WOC, slope ¾ degree.

1-27-17 370', drilling, drilled plug at 5:30 AM

1-28-17 1684', drilling, lost circulation at 1525', added LCM to control

1-29-17 2692', drilling, TOWB, mud pump repair, TIWB

1-30-17 3188', drilling

1-31-17 3747', drilling, set up gas detector

2-01-17 4238', CFS 4130', CFS 4290, short trip 24 stands, rig repair, TOWB, slope ¾ degree,

2-02-17 4290', DST # 1 4238' to 4290' "I" to "J" LKC, TIWB, drilling

2-03-17 4537' CFS 4510', CFS 4537' TOWB, DST # 2 4466'-4537' Pawnee and Myrick Station, TIWB, RTD 4650', P&A

2-04-17 4650', LDDP and P&A, RD



**DIAMOND TESTING**  
P.O. Box 157  
**HOISINGTON, KANSAS 67544**  
(800) 542-7313  
**DRILL-STEM TEST TICKET**  
FILE: Wild Vince # 1 Dst 1

TIME ON: 03:50  
TIME OFF: 09:47

Company Starlight Exploration LLC Lease & Well No. Wild Vince # 1  
Contractor Royal Drilling Rig 1 Charge to Starlight Exploration LLC  
Elevation KB 3077 GL 3071 Formation LKC I+J Effective Pay \_\_\_\_\_ Ft. Ticket No. RR259  
Date Feb-02-2017 Sec. 35 Twp. \_\_\_\_\_ 9 S Range \_\_\_\_\_ 32 W County \_\_\_\_\_ Thomas State KANSAS  
Test Approved By Wyatt Urban Diamond Representative \_\_\_\_\_

Formation Test No. 1 Interval Tested from 4238 ft. to 4290 ft. Total Depth 4290 ft.  
Packer Depth 4233 ft. Size 6 3/4 in. Packer depth \_\_\_\_\_ ft. Size 6 3/4 in.  
Packer Depth 4238 ft. Size 6 3/4 in. Packer depth \_\_\_\_\_ ft. Size 6 3/4 in.

Depth of Selective Zone Set \_\_\_\_\_  
Top Recorder Depth (Inside) 4228 ft. Recorder Number 0062 Cap. 5000 P.S.I.  
Bottom Recorder Depth (Outside) 4276 ft. Recorder Number 8471 Cap. 5000 P.S.I.  
Below Straddle Recorder Depth \_\_\_\_\_ ft. Recorder Number \_\_\_\_\_ Cap. \_\_\_\_\_ P.S.I.

Mud Type Chem Viscosity 68 Drill Collar Length \_\_\_\_\_ ft. I.D. 2 1/4 in.  
Weight 9.2 Water Loss 7.2 cc. Weight Pipe Length \_\_\_\_\_ ft. I.D. 2 7/8 in.  
Chlorides 500 P.P.M. Drill Pipe Length 4213 ft. I.D. 3 1/2 in.  
Jars: Make STERLING Serial Number na Test Tool Length 25 ft. Tool Size 3 1/2-IF in.  
Did Well Flow? na Reversed Out na Anchor Length 52A (20P) ft. Size 4 1/2-FH in.  
Main Hole Size 7 7/8 Tool Joint Size 4 1/2 xh in. Surface Choke Size 1 in. Bottom Choke Size 5/8 in.

Blow: 1st Open: Weak Blow (Built to 1/4" in 45 mins) NOBB  
2nd Open: No Blow Pulled Tool do to Blow

Recovered <u>1</u> ft. of <u>M</u> <u>100% M</u>	
Recovered _____ ft. of _____	
Recovered _____ ft. of _____	
Recovered _____ ft. of _____	
Recovered _____ ft. of _____	Price Job
Recovered _____ ft. of _____	Other Charges
Remarks: <u>Tool Sample: 100 % M</u>	Insurance
	Total

Time Set Packer(s) 6:07 AM A.M. P.M. Time Started Off Bottom 7:55 AM A.M. P.M. Maximum Temperature 115  
Initial Hydrostatic Pressure..... (A) 2039 P.S.I.  
Initial Flow Period..... Minutes 45 (B) 11 P.S.I. to (C) 14 P.S.I.  
Initial Closed In Period..... Minutes 45 (D) 44 P.S.I.  
Final Flow Period..... Minutes 15 (E) 14 P.S.I. to (F) 14 P.S.I.  
Final Closed In Period..... Minutes \_\_\_\_\_ (G) \_\_\_\_\_ P.S.I.  
Final Hydrostatic Pressure..... (H) 2004 P.S.I.

Diamond Testing shall not be liable for damages of any kind to the property or personnel of the one for whom a test is made or for any loss suffered or sustained, directly or indirectly, through the use of its equipment, or its statement or opinion concerning the result of any test. Tools lost or damaged in the hole shall be paid for at cost by the party for whom the test is made.



**DIAMOND TESTING**  
P.O. Box 157  
**HOISINGTON, KANSAS 67544**  
(800) 542-7313  
**DRILL-STEM TEST TICKET**  
FILE: Wild Vince # 1 Dst 2

TIME ON: 07:58  
TIME OFF: 13:52

Company Starlight Exploration LLC Lease & Well No. Wild Vince # 1  
Contractor Royal Drilling Rig 1 Charge to Starlight Exploration LLC  
Elevation KB 3077 GL 3071 Formation Pawnee Effective Pay \_\_\_\_\_ Ft. Ticket No. RR260  
Date Feb-03-2017 Sec. 35 Twp. \_\_\_\_\_ 9 S Range \_\_\_\_\_ 32 W County \_\_\_\_\_ Thomas State KANSAS  
Test Approved By Herb Deines Diamond Representative \_\_\_\_\_

Formation Test No. 2 Interval Tested from 4466 ft. to 4537 ft. Total Depth 4537 ft.  
Packer Depth 4461 ft. Size 6 3/4 in. Packer depth \_\_\_\_\_ ft. Size 6 3/4 in.  
Packer Depth 4466 ft. Size 6 3/4 in. Packer depth \_\_\_\_\_ ft. Size 6 3/4 in.

Depth of Selective Zone Set \_\_\_\_\_

Top Recorder Depth (Inside) 4456 ft. Recorder Number 0062 Cap. 5000 P.S.I.  
Bottom Recorder Depth (Outside) 4506 ft. Recorder Number 8471 Cap. 5000 P.S.I.  
Below Straddle Recorder Depth \_\_\_\_\_ ft. Recorder Number \_\_\_\_\_ Cap. \_\_\_\_\_ P.S.I.  
Mud Type Chem Viscosity 56 Drill Collar Length \_\_\_\_\_ ft. I.D. 2 1/4 in.  
Weight 9.3 Water Loss 7.6 cc. Weight Pipe Length \_\_\_\_\_ ft. I.D. 2 7/8 in.  
Chlorides 500 P.P.M. Drill Pipe Length 4431 ft. I.D. 3 1/2 in.  
Jars: Make STERLING Serial Number na Test Tool Length 25 ft. Tool Size 3 1/2-IF in.  
Did Well Flow? na Reversed Out na Anchor Length 71A (40P) ft. Size 4 1/2-FH in.  
Main Hole Size 7 7/8 Tool Joint Size 4 1/2 xh in. Surface Choke Size 1 in. Bottom Choke Size 5/8 in.









Blow: 1st Open: WSB (Built to 1 1/4 inch in 45 mins) NOBB  
2nd Open: No Blow (Pulled tool do to blow)

Recovered <u>4</u> ft. of <u>M</u> <u>100%</u> <u>M</u>	
Recovered _____ ft. of _____	
Recovered _____ ft. of _____	
Recovered _____ ft. of _____	
Recovered _____ ft. of _____	Price Job
Recovered _____ ft. of _____	Other Charges
Remarks: <u>Tool Sample: 100% m</u>	Insurance
	Total

Time Set Packer(s) 10:48 AM A.M. P.M. Time Started Off Bottom 12:22 PM A.M. P.M. Maximum Temperature 117  
Initial Hydrostatic Pressure..... (A) 2173 P.S.I.  
Initial Flow Period..... Minutes 45 (B) 12 P.S.I. to (C) 26 P.S.I.  
Initial Closed In Period..... Minutes 45 (D) 451 P.S.I.  
Final Flow Period..... Minutes 10 (E) 15 P.S.I. to (F) 23 P.S.I.  
Final Closed In Period..... Minutes \_\_\_\_\_ (G) \_\_\_\_\_ P.S.I.  
Final Hydrostatic Pressure..... (H) 2097 P.S.I.

Diamond Testing shall not be liable for damages of any kind to the property or personnel of the one for whom a test is made or for any loss suffered or sustained, directly or indirectly, through the use of its equipment, or its statement or opinion concerning the result of any test. Tools lost or damaged in the hole shall be paid for at cost by the party for whom the test is made.

**ROCK TYPES**

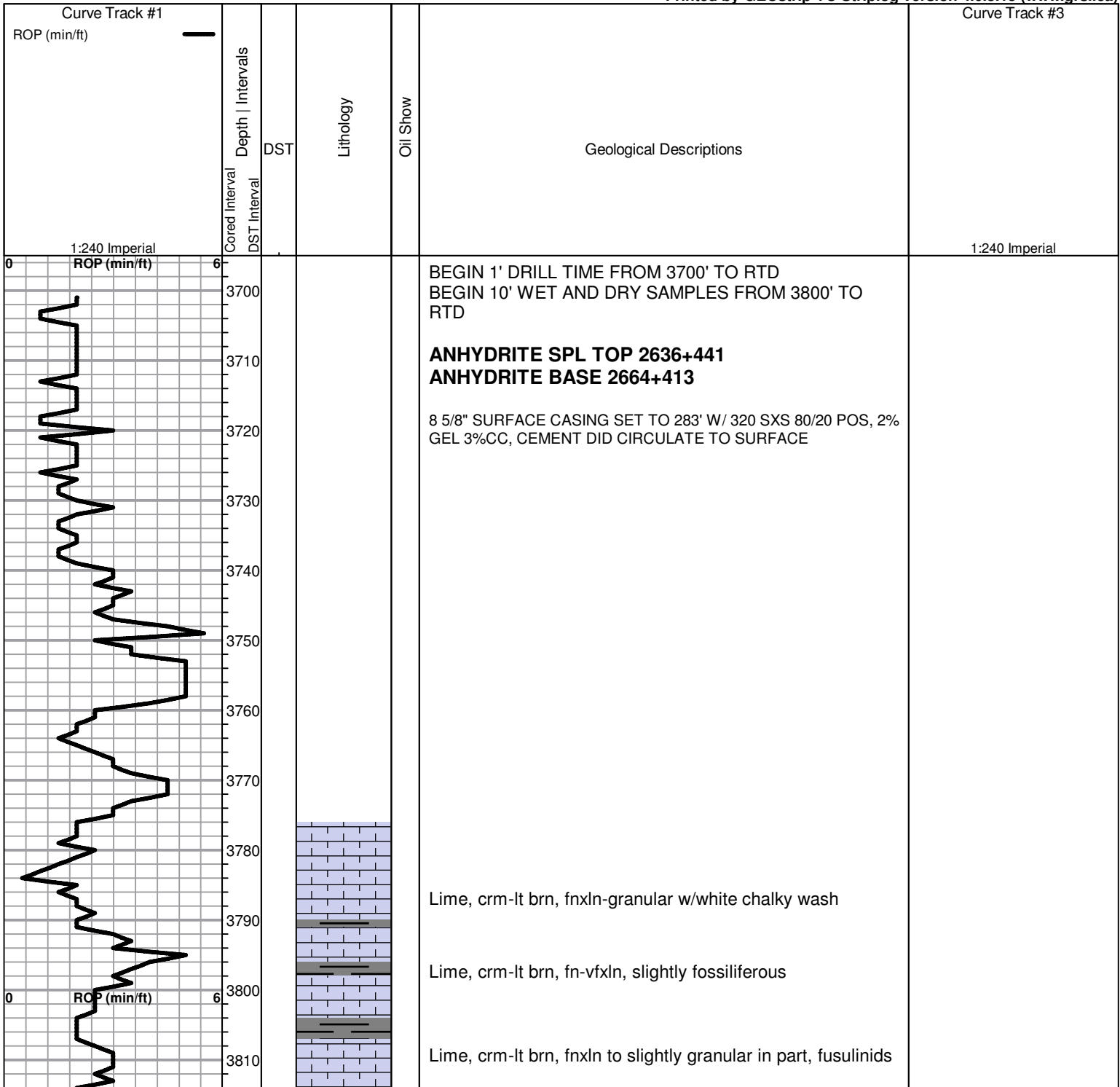
 Clystgy	 Lmst fw7>	 shale, gry	 shale, red
 Lmst fw<7	 Lscong1	 Carbon Sh	 Ss

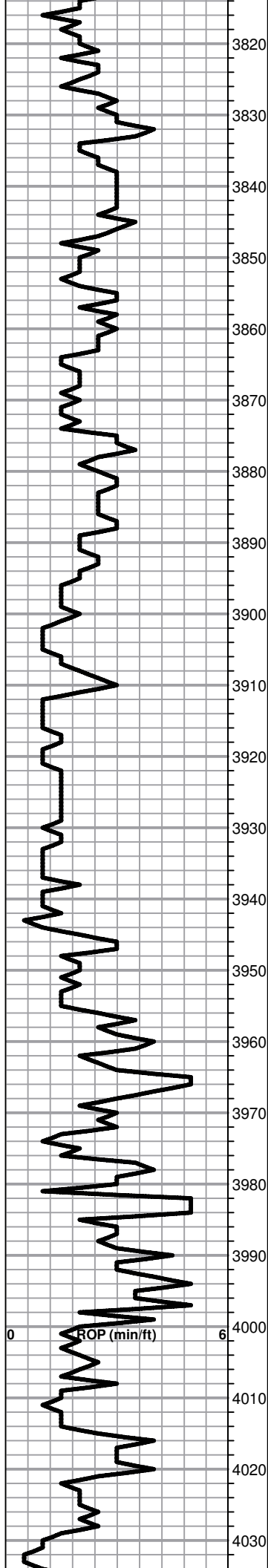
**ACCESSORIES**

**MINERAL**

- ▲ Chert, dark
- P Pyrite
- △ Chert White

Printed by GEOstrip VC Striplog version 4.0.8.15 (www.grsi.ca)





Shale, soft mud with red wash

**TOPEKA SPL TOP 3827-750**

Lime, crm-lt brn, fnxln-slightly granular in part

Lime, lt-med brn, fn-vfxln w/ lt chalky wash

Lime, crm-lt brn, fnxln-slightly granular

Lime, crm-lt brn, fnxln

Lime, lt brn, fnxln with thin fossil beds, no wet cut, NS

Shale, med brown with lt shaley wash,

Lime, med grayish brn, fn-micro xln

Lime, lt brn, fnxln-granular, slightly fossiliferous

Lime, crm, fnxln with sticky bedded chalk

Lime, crm-lt brn, granular with fine fossil content with lt chalky wash, NS

Lime, lt-med brn, fn-micro xln

Lime, crm-lt brn, granular, slight bedded chalk

Lime, crm-lt brn, granular w/ slight bedded chalk

Lime, crm-lt-med brn-gray, fnxln-granular

Shale, gray to black carbonaceous, fissile, blocky

Lime, crm-lt brn, fnxln with scattered pyrite clusters

Lime, crm-lt brn, fn-vfxln-micro xln in part

Lime, offwhite-crm, fn-vfxln

Lime, offwhite-crm, fn-micro xln

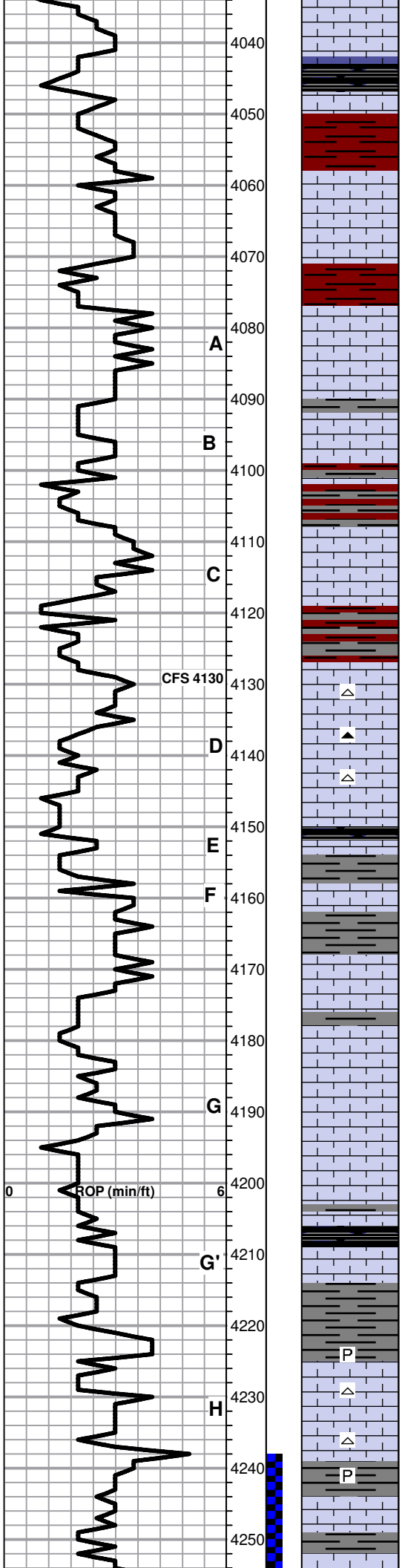
Shale, gray-black carbonaceous, fissile, blocky

Lime, offwhite-lt gray, fn-micro xln, sublithographic

Lime, lt-med -dark brn, fn-vfxln

Lime, crm, fnxln to granular in part, fine oomoldic in part, NS

Lime, offwhite, fnxln-granular, porous, NS



**HEEBNER SHALE SPL TOP 4042-965**

Shale, black carbonaceous, fissile, blocky  
 Lime, med brn, micro xln  
 Shale, red-brn, soft blocky

**TORONTO SPL TOP 4058-981**

Lime, white-crm, fnxln, NS

Lime, crm-offwhite, fn-vfxln  
 Shale, lt red wash, soft mud to soft blocky

**LKC SPL TOP 4077-1000**

Lime, white-crm, fn-vfxln, cemented oolitic beds, NS

Lime, white-crm, fnxln, very chalky, NS

Lime, crm-tan, fn-vfxln, white chalky wash, NS

Shale, brick, soft to firm blocky

Lime, crm-tan, fn-vfxln, chalky, NS

Shale, red, soft-firm blocky with lime green shales in part

Lime, white-lt brn, fnxln, hard on crush, with tan and orange chert fragments

Lime, lt brn-offwhite, fnxln-granular with interxln porosity, NS

Shale, black carbonaceous, blocky

Lime, pearl-ivory, fossiliferous with little visible porosity, spotty dead stain in fossil casts and interfossil fragments, dull wet cut

Lime, crm-lt brn, fnxln-granular with white chalky wash

Lime, crm, fnxln with white chalky wash, NS

Lime, crm, fnxln

Lime, crm-lt brn with med brn near shale boundary, fn-vfxln

Shale, black carbonaceous, fissile, blocky  
 Lime, med-dark brn, fn-micro xln

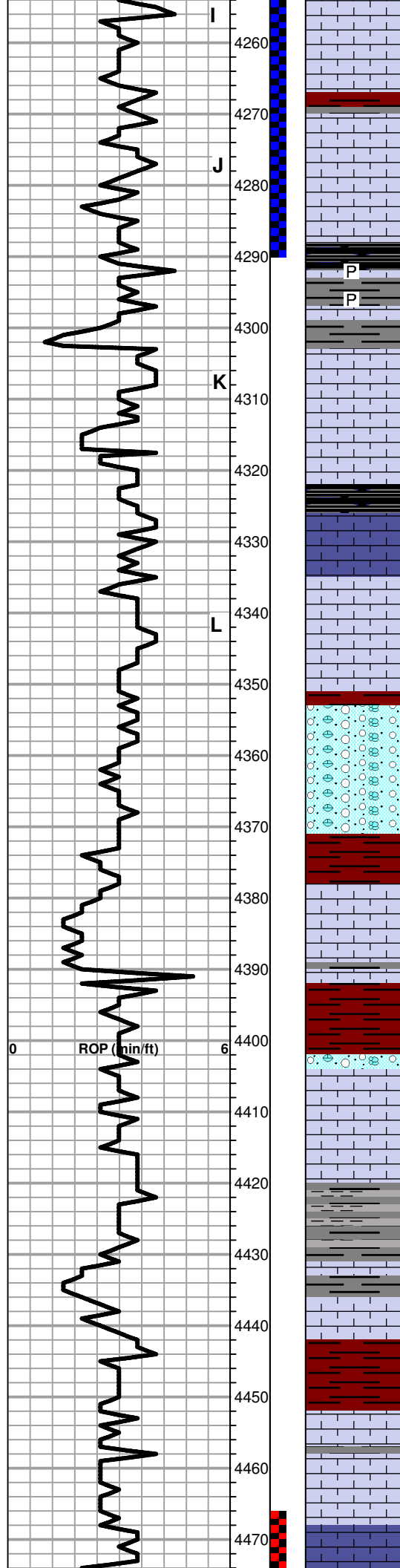
Shale, lt-med gray, soft blocky, waxy slick in part

Lime, crm-lt brn, fnxln, slightly pyritic, few granular chips, NS

Lime, offwhite-crm, fn-micro xln, chert, tan-orange, fresh

Lime, lt brn, fn-vfxln with pyrite clusters in part

Lime, crm, fnxln with thin bed with fine pinpoint vuggy



Lime, crm, fnxln with thin bed with fine pinpoint vuggy porosity, lt spotty to saturated staining around vugs, no detectable odor, few specks of oil floating in tray, no gas kick

Shale, red, firm, blocky

Lime, crm-lt brn, fnxln with bed of fine fossil fragments with fine pinpoint vuggy porosity, NFO, no odor, spotty to saturated staining in fossil fragments and casts, slightly better developed than "I" zone

Shale, black carbonaceous, blocky

Lime, dark brn, fn-micro xln, micro fossil content

Lime, crm-white with few granular chips, bedded chalk, NS no wet cut, slight fine fossil content in chalky matrix

Lime, offwhite-lt gray, fn-micro xln

Shale, gray-black carbonaceous, blocky

Lime, lt brn-lt grayish brn, fn-vfxln

Lime, med grayish brn, vfxln

Lime, lt-med brn, micro xln, NS

**BKC SPL TOP 4351-1274**

Lime, crm, clastic mix with vari color limes and red shale, NS

Lime, lt grayish green, granular, soft on crush, no wet cut

Shale, lt red wash, soft blocky

**MARMATON SPL TOP 4378-1301**

Lime, crm-lt grayish brn, fn-micro xln with slight bedded chalk

Shale, red wash, red to dark brn, soft-firm blocky

Lime, offwhite-lt brn, fn-micro xln with some red shale inclusions near shale boundary

Lime, lt gray, fn-vfxln

Shale, lt gray, soft sticky clumping, some firm waxy in part

Lime, lt brn, fnxln

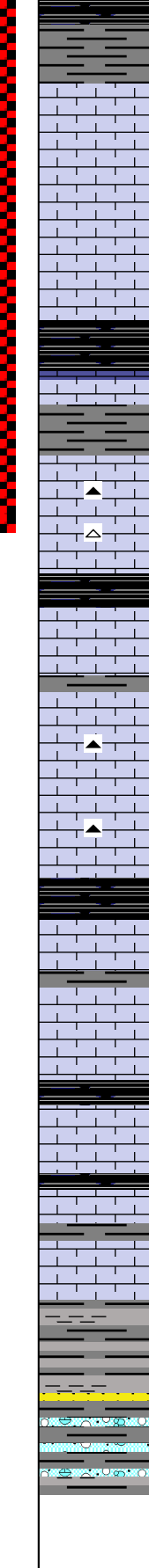
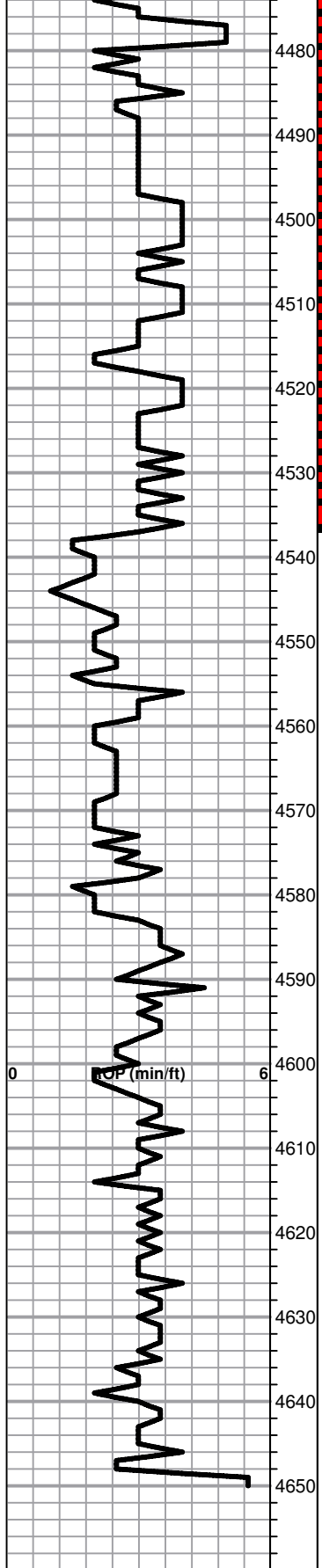
Shale, red to dark brown, firm blocky

Lime, crm, fn-micro xln with lt chalky wash

Lime, crm-lt brn, fn-micro xln becoming offwhite to lt gray near shale boundary

SLOPE SURVEY 3/4 DEGREE





Shale black carbonaceous, blocky with lt gray sticky in part

**PAWNEE SPL TOP 4484-1407**

Lime, crm-tan, fn-vfxln, chalky, NS, No Wet Cut

Lime, crm-lt brn-lt gray with depth, fn-micro xln, NS

Lime, lt gray, fn-micro xln

Shale, black carbonaceous, soft blocky

Lime, med brn, micro xln

**MYRICK STATION SPL TOP 4527-1450**

Lime, crm-lt brn, fn-vfxln with bedded chalk, NS, white to orange chert fragments

Lime, lt brn, fn-micro xln

Shale, gray-black carbonaceous, fissile, blocky

**FORT SCOTT 4546-1469**

Lime, crm-lt brn, mostly fnxln w/no visible porosity, some fossil content but well cemented, NS

Lime, crm-lt brn, fn-vfxln  
Chert, tan, fresh, sharp

Lime, gray-black, fn-vfxln

**CHEROKEE SHALE 4578-1501**

Shale, black carbonaceous, blocky

Lime, crm-tan, fn-micro xln, no visible porosity, chalk in part

Lime, lt brn-lt grayish brn, fn-micro xln

Lime, lt-med brn, fn-micro xln

**JOHNSON ZONE 4621-1544**

Lime, lt-med brn, thin bed of fossiliferous with heavy oil show, no odor or gas detector response, does not appear well developed.

Shale and siltstone, firm, waxy

SS, few chips, NS

Mix of clastic shales and lime rubble, NS

DST # 2 4466-4537 SEE  
HEADER FOR SUMMARY