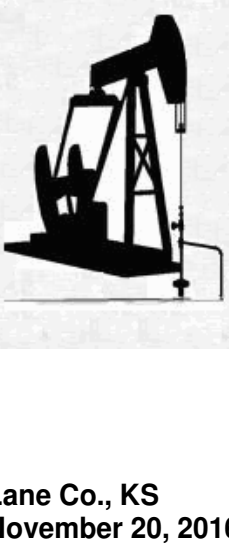
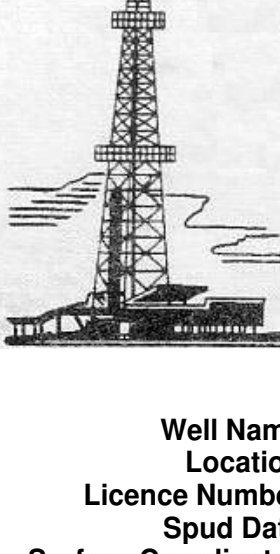


WELLSITE GEOLOGIST'S REPORT

VERNON C. SCHRAG
CONSULTANT GEOLOGIST



Scale 1:240 (5"=100') Imperial

Well Name: **PARIS TRUST #1-14**
 Location: **SW SE NW SE SEC. 14-19S-29W**
 Licence Number: **API: 15-101-22580**
 Spud Date: **November 9, 2016**
 Surface Coordinates: **1391' FSL & 1732' FEL**

Region: **Lane Co., KS**
 Drilling Completed: **November 20, 2016**

Bottom Hole Coordinates:
 Ground Elevation (ft): **2815'**
 Logged Interval (ft): **3800'**
 Formation: **Mississippi**
 Type of Drilling Fluid: **Chemical Premix (Displaced)**

K.B. Elevation (ft): **2825'**
 Total Depth (ft): **4665'**

Printed by MUD.LOG from WellSight Systems 1-800-447-1534 www.WellSight.com

OPERATOR:

Company: **Larson Engineering Inc.**
 Address: **562 West State Road 4
 Olmitz, KS 67564-8561**

DRILLING CONTRACTOR:

Southwind Drilling Co., Rig #1

DP 4.5" XH (16.6#); DC 6-1/4" x 2-3/8" x 529.29', Kelly 40.00', Tool Joint 5.5" ; Bit: JZ-HA23L, 3-14s to 4240'; JZ-HA20Q, 3-15s to RTD, 7-7/8", rpm 75, WOB 35k; Kelly Bushing 10' above ground level; Doug Roberts (tool pusher).

CASING:

Ran 6 jts new 8-5/8" 20# R3 STC csg. Tallied 242', set @ 255' KB. Ran 115 jts new API 4-1/2" 11.6# L-80 LTC 8rd csg. Tallied 4666.80', set @ 4664' KB.

CIRCULATION SYSTEM:

Continental EMSCO D-375, duplex, 6 x 14, 58 spm, Chemical, premix, earth pits, MudCo. / Service Mud, Inc., Rick Hughes.

OPEN HOLE LOGS:

DN, DI (SP), ML, No Sonic; 5" detail LTD-3600; 2" DI to surface casing; LogTech-Pioneer Wireline, Hays, KS, T. Martin, Log total depth (4665') was equal to rotary total depth (4665').

DRILL STEM TEST #1:

Lansing "E" Zone: Interval: 4094-4120 (26' anchor): Blow: weak 1/8" thru IFF, no RB, weak 1/8" blow declined to surf blow FFP; no RB; Times: 5-15-30; Recovery: 10' OCM (30%O, 70%M); Pressure: HP: 2001-1954 psi, SIP: 974-969 psi, FP 17-17, 19-18 psi; BHT: 111 deg. F; Trilobite Testing, Inc., Scott City, KS, Mike Roberts.

DRILL STEM TEST #2:

Kansas City "H": Interval: 4184-4202 (18' anchor): Blow: incr to 2" IFF, no RB, incr to 9" FFP, no RB; Times: 5-15-30-60; Recovery: 127' total fluid; 62' GIP, 35' oil (100%), 92' SOCM (2%G, 5%O, 93%M); Pressures: HP: 2048-2008 psi; SIP: 721-718 psi; FP: 23-32, 36-64 psi; BHT: 119 deg. F; Trilobite Testing, Inc., Scott City, KS, Mike Roberts.

DRILL STEM TEST #3:

Kansas City "I": Interval: 4220-4240 (20' anchor): Blows: weak 1/8" IFF, no RB, weak surf. FFP; no RB; Times: 5-15-30-60; Recovery: 30' mud w/few oil spots; Pressures: HP: 2059-2027 psi; SIP: 865-85 psi; FP: 26-28, 28-35; BHT: 113 deg. F; Trilobite Testing, Inc., Scott City, KS, Mike Roberts.

ISIP is abnormal.

DRILL STEM TEST #4:

Kansas City "J": Interval: 4257-4264 (7' anchor): Blow: weak 1/8" IFF, no RB, weak 2" FFP, no RB; Times: 5-15-30-60; Recovery: 124' WCM (30%W, 70%M); Pressures: 2088-2030 psi; SIP: 570-592 psi; FP: 24-33, 34-67 psi; BHT: 123 deg. F; Trilobite Testing, Inc., Scott City, KS, Mike Roberts.

DRILL STEM TEST #5:

Kansas City "K": Interval: 4284-4295 (11') Blow: incr to 8" IFF, no RB, BOB 11 min FFP, no RB; Times: 5-15-30; Recovery: 124' Total Fluid 340', 154' WCM w/oil scum (10%W, 90%M), 186' MW (95%W, 5%M); Pressures: HP: 2096-2062 psi, SIP: 603-599 psi, FP: 30-69, 73-173 psi; BHT: 128 deg. F; Trilobite Testing, Inc., Scott City, KS, Mike Roberts.

DRILL STEM TEST #6:

Kansas City "Mid. Creek, L": Interval: 4326-4341 (15' anchor): Blow: surf. IFF, no RB, no blow FFP, no RB; Times: 5-15-30-60; Recovery: 20' SOCM (3%O, 97%M); Pressures: HP: 2110-2088 psi; SIP: 645-644 psi; FP: 18-22, 23-21 psi; BHT: 112 deg. F. Trilobite Testing, Inc., Scott City, KS, Mike Roberts.

DRILL STEM TEST #7:

Pleasanton: Interval: 4388-4415 (27' anchor): Blow: weak surf. IFF, no RB, weak surf died 13 min. FFP; no RB; Times: 5-15-30-60; Recovery: 62' Mud w/oil spots; Pressure: HP: 2175-2132 psi; SIP: 311-247 psi; FP: 44-43, 46-67 psi; BHT: 118 deg. F; Trilobite Testing, Inc., Scott City, KS, Mike Roberts.

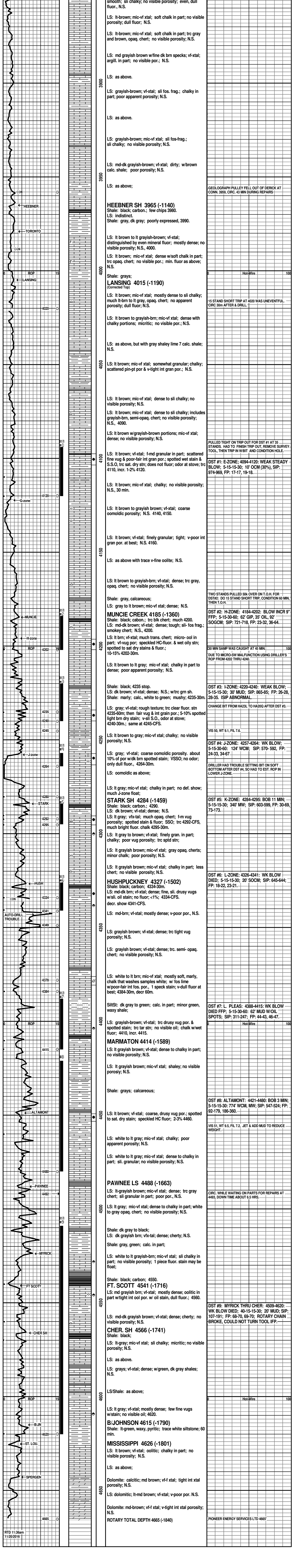
DRILL STEM TEST #8:

Altamont: Interval: 4421-4480 (59' anchor): Blow: BOB 3 min IFF, no RB, BOB 4 min FFP, no RB; Times: 5-15-30; Recovery: 774' Total Fluid (100%M), 248' WCM (10%W, 90%M), 310' MW (70%W, 30%M), 124' MW (90%W, 10%M, RW 0.416 at 37.4 deg F); Pressures: HP: 2206-2102, SIP: 179-547 psi; FP: 92-179, 186-360 psi; BHT: 112 deg. F; Trilobite Testing, Inc., Scott City, KS, Mike Roberts.

DRILL STEM TEST #9:

Myrick Station thru Cherokee: Interval: 4509-4620 (111' anchor): Blow: weak 1/8" IFF, no RB, no blow FFP, no RB; Times: 5-15-30-60; Recovery: 20' mud no show; Pressures: HP: 2278-2238 psi; SIP: 107-191 psi; FP: 68-70, 69-70 psi; BHT: 123 deg. F; Trilobite Testing, Inc., Scott City, KS, Mike Roberts.

Rotary chain repairs were needed to restore rotation during IFF.



PIONEER ENERGY SERVICES LTD 4665'