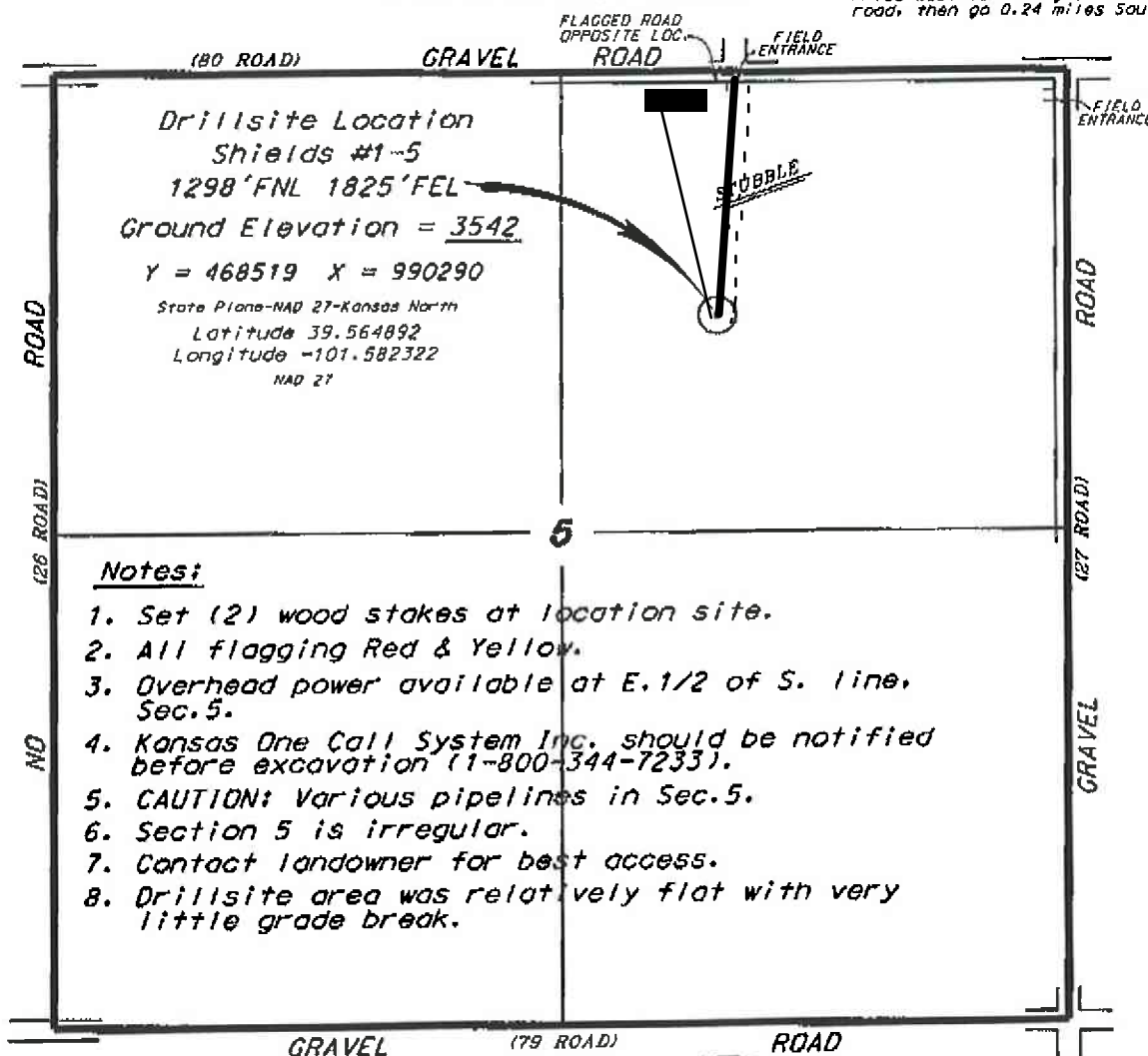


L.D. DRILLING, INC.
SHIELDS LEASE
NE. 1/4, SECTION 5, T6S, R38W
SHERMAN COUNTY, KANSAS

Directions:

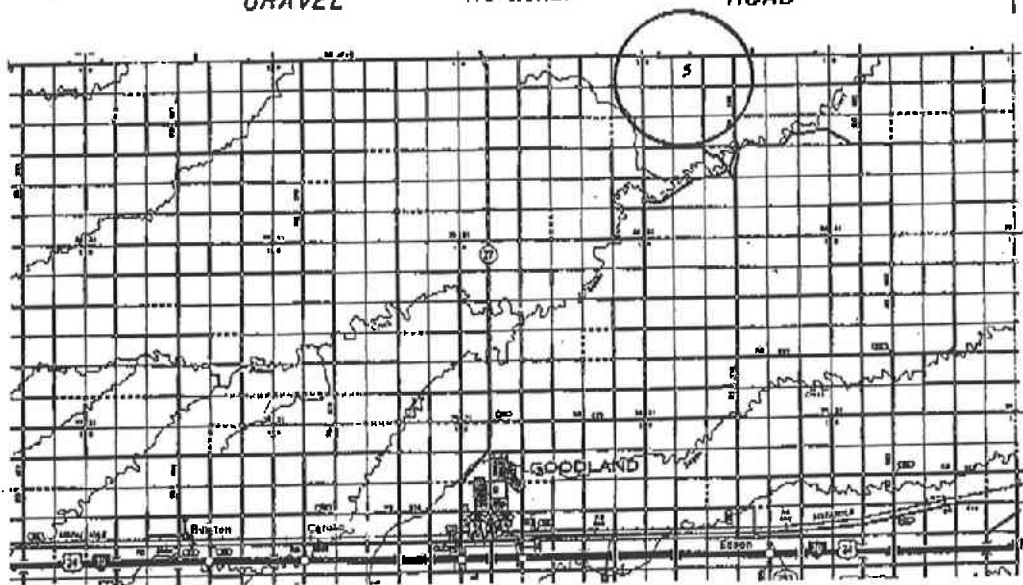
From the intersection of Highway 27 and Interstate 70 (0.5 miles south of Goodland, Kansas) go 16.9 miles North on Highway 27, then go 1.2 miles East on a county road to the NE. corner of Section 5, then go 0.34 miles West to a flag on the south edge of road, then go 0.24 miles South to location.



Notes:

1. Set (2) wood stakes at location site.
2. All flagging Red & Yellow.
3. Overhead power available at E. 1/2 of S. line, Sec. 5.
4. Kansas One Call System Inc. should be notified before excavation (1-800-344-7233).
5. CAUTION: Various pipelines in Sec. 5.
6. Section 5 is irregular.
7. Contact landowner for best access.
8. Drillsite area was relatively flat with very little grade break.

*Ingress and egress to location as shown on this plat is for usage only and may not be legally opened for public use. Contact landowner, tenant and county road department for access.



• Controlling data is based upon the best maps and photographs available to us and upon a regular section of land containing 360 acres.
 • Approximate section lines were determined using the normal standard of care of oilfield surveyors practicing in the state of Kansas. The section corners, which establish the precise section lines, were not necessarily located, and the exact location of the drillsite location in the section is not guaranteed. Therefore, the operator securing this service and occupying this plot and all other parties relying thereon agree to hold Central Kansas Oilfield Services, Inc., its officers and employees harmless from all losses, costs and expenses and said entities released from any liability from incidental or consequential damages.
 • Elevations derived from National Geodetic Vertical Datum.

Date February 6, 2017