

LEGEND:

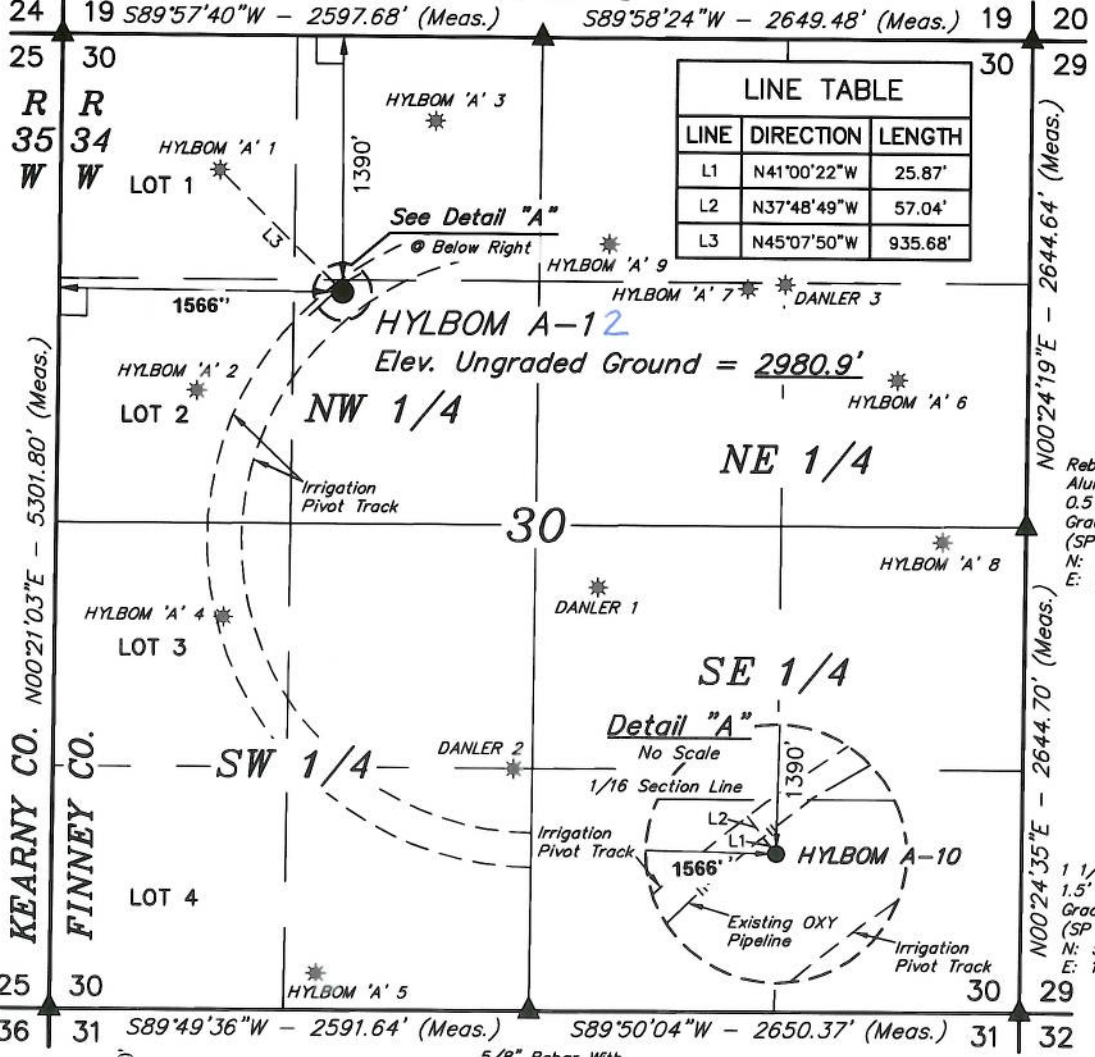
- └─ = 90° SYMBOL
- = PROPOSED WELLHEAD.
- = TARGET BOTTOM HOLE.
- ▲ = SECTION CORNERS LOCATED. (NAD 83)
- * = EXISTING WELLS

T23S, R34W, 6th P.M.

3/4" Rebar
0.5' Below Grade
(SP NAD 27)
N: 507663.51
E: 1250520.75

1/2" Rebar
0.4' Below Grade
(SP NAD 27)
N: 507598.35
E: 1253117.12

3/4" Rebar
0.5' Below Grade
(SP NAD 27)
N: 507531.34
E: 1255765.25



1/2" Rebar
0.75' Below Grade
(SP NAD 27)
N: 502365.59
E: 1250351.97

Rebar with Alum. Cap
0.5' Below Grade
(SP NAD 27)
N: 504888.72
E: 1255678.54

1 1/4" Pipe
1.5' Below Grade
(SP NAD 27)
N: 502246.04
E: 1255591.63

5/8" Rebar With Yellow Plastic Cap
0.4 Below Grade
(SP NAD 27)
N: 502306.66
E: 1252942.46



NAD 83 (SURFACE LOCATION)
LATITUDE = 38°01'42.22" (38.028394)
LONGITUDE = 101°05'51.45" (101.097619)
NAD 27 (SURFACE LOCATION)
LATITUDE = 38°01'42.13" (38.028369)
LONGITUDE = 101°05'49.83" (101.097175)
STATE PLANE NAD 83 (KANSAS SOUTH)
N: 1818592.24 E: 564226.01
STATE PLANE NAD 27 (KANSAS SOUTH)
N: 506236.04 E: 1252001.75

CERTIFICATE
THIS IS TO CERTIFY THAT THE ABOVE PLAT WAS PREPARED FROM FIELD NOTES OF ACTUAL SURVEYS MADE BY ME OR UNDER MY SUPERVISION AND THAT THE SAME ARE TRUE AND CORRECT TO THE BEST OF MY KNOWLEDGE AND BELIEF.



BASIS OF BEARINGS
BASIS OF BEARINGS IS A G.P.S. OBSERVATION
BASIS OF ELEVATION

THE BASIS OF ELEVATION, ELEV. 2849.0', WAS DERIVED FROM AN OPUS SOLUTION AT LAT: 37°58'08.99" LONG: 100°54'04.80" AND HAS A DATUM OF NAVD88.

MERIT ENERGY COMPANY

HYLBOM A-12
SE 1/4 NW 1/4, SECTION 30, T23S, R34W, 6th P.M.
FINNEY COUNTY, KANSAS

SURVEYED BY	DATE	REVISED BY	DATE
J.P.	01-12-16		
DRAWN BY	DATE		
E.C.	01-13-16		
SCALE	1" = 1000'		



UELS, LLC
Corporate Office * 85 South 200 East
Vernal, UT 84078 * (435) 789-1017



WELL LOCATION PLAT

LEGEND:

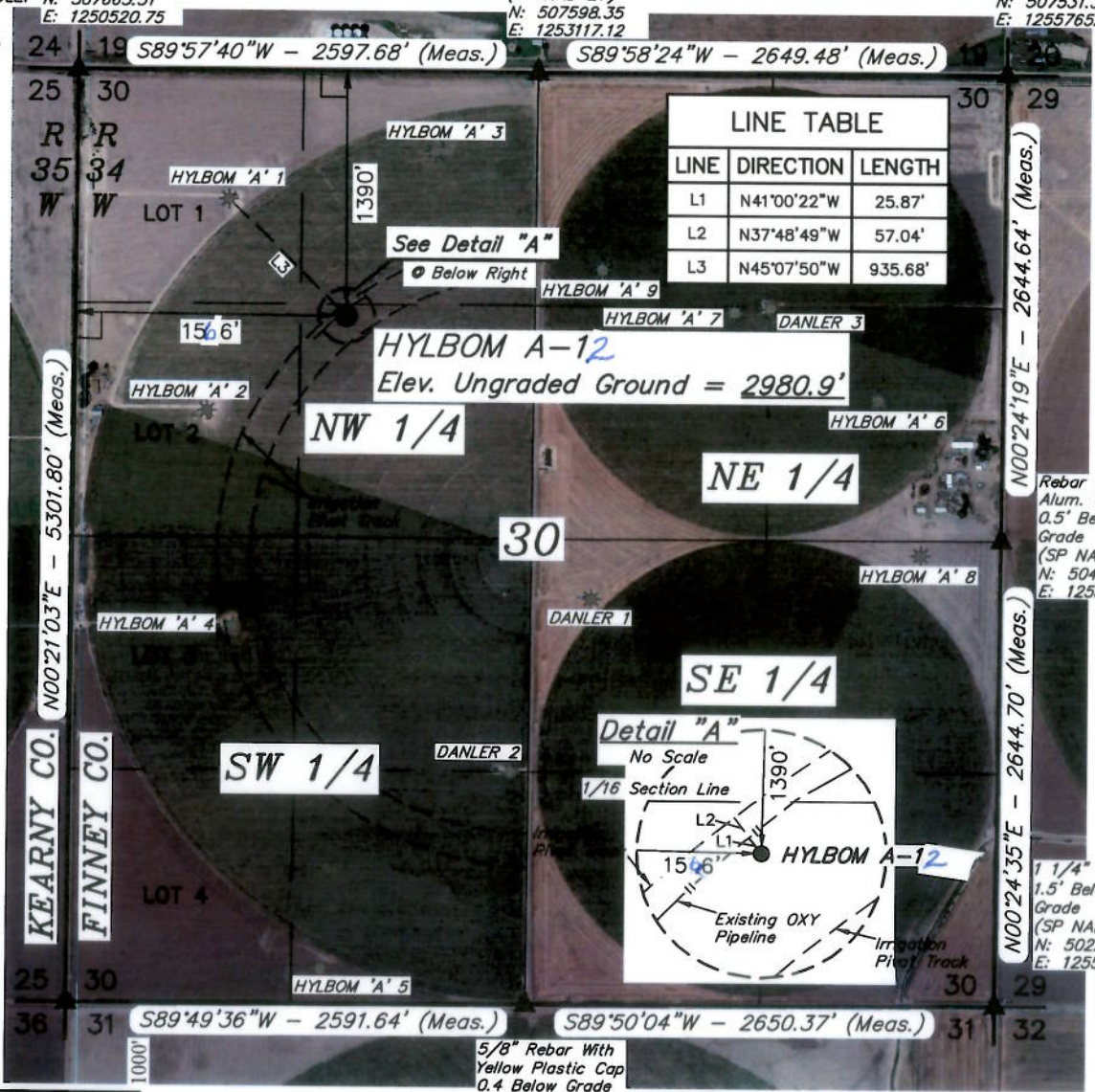
- └ = 90° SYMBOL
- = PROPOSED WELLHEAD.
- = TARGET BOTTOM HOLE.
- ▲ = SECTION CORNERS LOCATED. (NAD 83)
- * = EXISTING WELLS

T23S, R34W, 6th P.M.

3/4" Rebar
0.5' Below Grade
(SP NAD 27)
N: 507663.51
E: 1250520.75

1/2" Rebar
0.4' Below Grade
(SP NAD 27)
N: 507598.35
E: 1253117.12

3/4" Rebar
0.5' Below Grade
(SP NAD 27)
N: 507531.34
E: 1255765.25



1/2" Rebar
0.75' Below Grade
(SP NAD 27)
N: 502365.59
E: 1250351.97

Rebar with Alum. Cap
0.5' Below Grade
(SP NAD 27)
N: 504888.72
E: 1255678.54

1 1/4" Pipe
1.5' Below Grade
(SP NAD 27)
N: 502246.04
E: 1255591.63

5/8" Rebar With Yellow Plastic Cap
0.4 Below Grade
(SP NAD 27)
N: 502306.66
E: 1252942.46



NAD 83 (SURFACE LOCATION)	
LATITUDE	= 38°01'42.22" (38.028394)
LONGITUDE	= 101°05'51.43" (101.097619)
NAD 27 (SURFACE LOCATION)	
LATITUDE	= 38°01'42.13" (38.028369)
LONGITUDE	= 101°05'49.83" (101.097175)
STATE PLANE NAD 83 (KANSAS SOUTH)	
N:	1818592.24 E: 564226.01
STATE PLANE NAD 27 (KANSAS SOUTH)	
N:	506236.04 E: 1252001.75

CERTIFICATE
THIS IS TO CERTIFY THAT THE ABOVE PLAT WAS PREPARED FROM FIELD NOTES OF ACTUAL SURVEYS MADE BY ME OR UNDER MY SUPERVISION AND THAT THE SAME ARE TRUE AND CORRECT TO THE BEST OF MY KNOWLEDGE AND BELIEF.



BASIS OF BEARINGS
BASIS OF BEARINGS IS A G.P.S. OBSERVATION
BASIS OF ELEVATION

THE BASIS OF ELEVATION, ELEV: 2849.0', WAS DERIVED FROM AN OPUS SOLUTION AT LAT: 37°58'08.99" LONG: 100°54'04.80" AND HAS A DATUM OF NAVD83.

MERIT ENERGY COMPANY

HYLBOM A-12
SE 1/4 NW 1/4, SECTION 30, T23S, R34W, 6th P.M.
FINNEY COUNTY, KANSAS

SURVEYED BY	DATE	REVISED BY	DATE
J.P.	01-12-16		
DRAWN BY	DATE		
E.C.	01-13-16		
SCALE	1" = 1000'		



UELS, LLC
Corporate Office * 85 South 200 East
Vernal, UT 84078 * (435) 789-1017



WELL LOCATION PLAT

BEGINNING AT THE INTERSECTION OF MAIN STREET & JONES AVE. IN HOLCOMB, KANSAS PROCEED IN A NORTHWESTERLY DIRECTION ALONG JONES AVE. APPROXIMATELY 1.0 MILES TO THE JUNCTION OF THIS ROAD AND BIG LOWE ROAD TO THE NORTH; TURN RIGHT AND PROCEED IN A NORTHERLY DIRECTION APPROXIMATELY 0.3 MILES TO THE JUNCTION OF THIS ROAD AND HIGHWAY 400 TO THE WEST; TURN LEFT AND PROCEED IN A WESTERLY DIRECTION APPROXIMATELY 6.0 MILES TO THE JUNCTION OF THIS ROAD AND NORTH KEARNY COUNTY ROAD TO THE NORTH; TURN RIGHT AND PROCEED IN A NORTHERLY DIRECTION APPROXIMATELY 1.8 MILES. FROM THIS POINT THE PROPOSED LOCATION IS LOCATED APPROXIMATELY 1526' EASTERLY.

MERIT ENERGY COMPANY

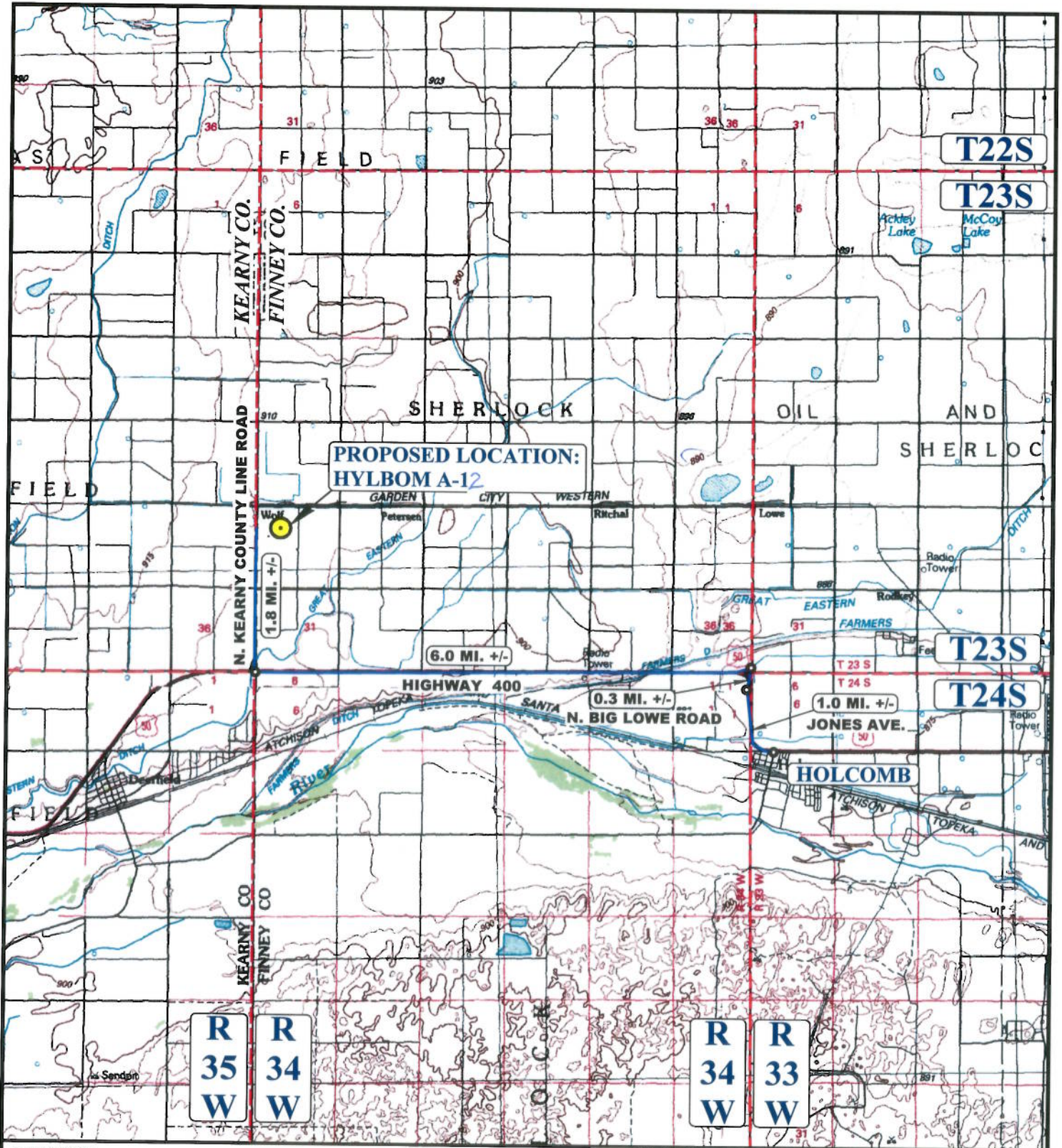
HYLBOM A-12
SE 1/4 NW 1/4, SECTION 30, T23S, R34W, 6th P.M.
FINNEY COUNTY, KANSAS

SURVEYED BY	DATE	REVISED BY	DATE
J.P.	01-12-16		
DRAWN BY	DATE		
E.C.	01-13-16		

ROAD DESCRIPTION



UELS, LLC
 Corporate Office * 85 South 200 East
 Vernal, UT 84078 * (435) 789-1017



LEGEND:
 PROPOSED LOCATION

MERIT ENERGY COMPANY

Hylbom A-10
 SE 1/4 NW 1/4, SECTION 30, T23S, R34W, 6th P.M.
 FINNEY COUNTY, KANSAS

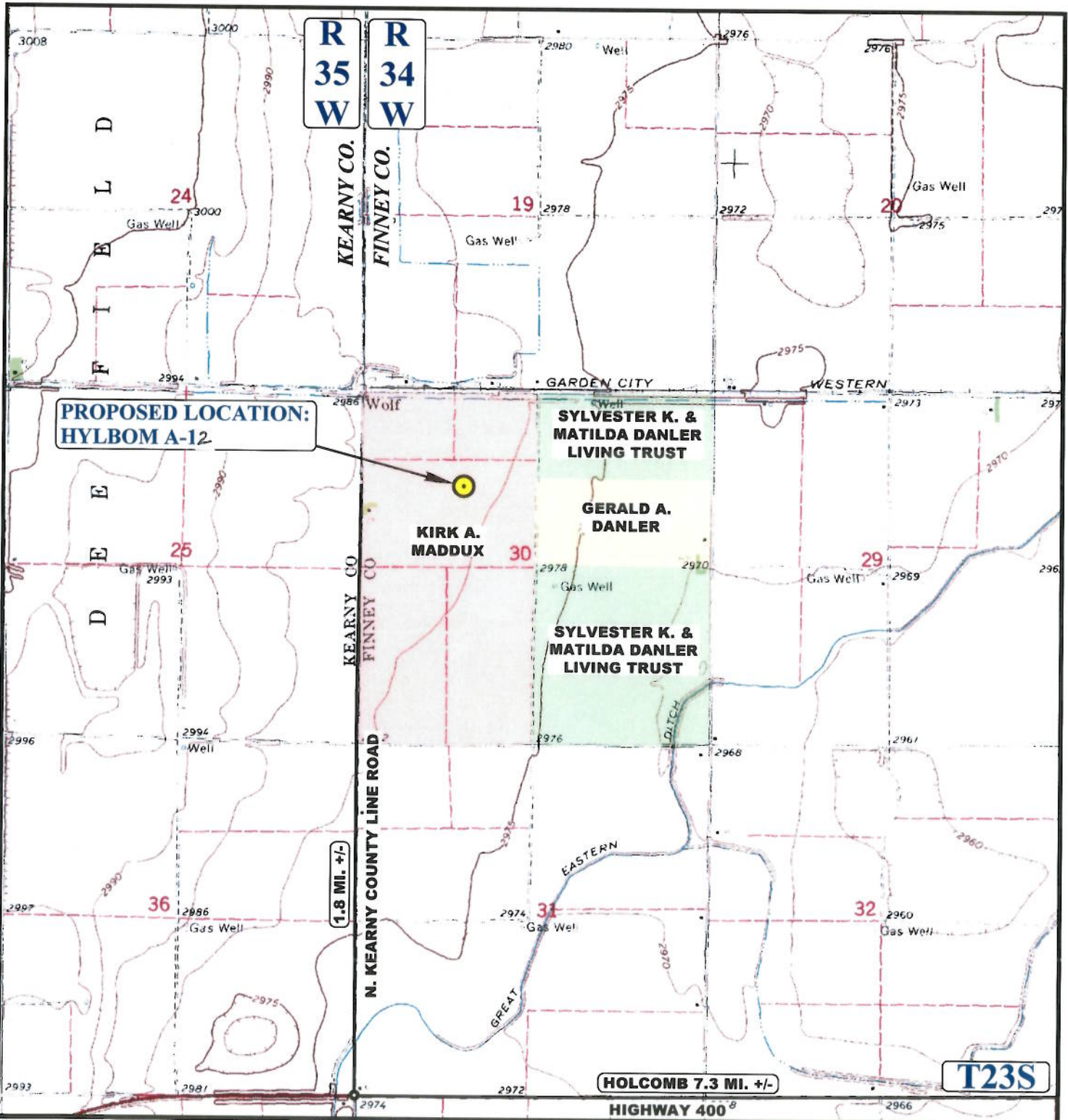


SURVEYED BY	DATE	REVISED BY	DATE
J.P.	01-12-16		
DRAWN BY	DATE		
E.C.	01-13-16		
SCALE	1" = 100,000'		



UELS, LLC
 Corporate Office * 85 South 200 East
 Vernal, UT 84078 * (435) 789-1017

ACCESS ROAD MAP **TOPO A**



NOTE: PARCEL DATA SHOWN HAS BEEN OBTAINED FROM VARIOUS SOURCES AND SHOULD BE USED FOR MAPPING, GRAPHIC AND PLANNING PURPOSES ONLY. NO WARRANTY IS MADE BY UINTAH ENGINEERING AND LAND SURVEYING (UELS) FOR ACCURACY OF THE PARCEL DATA.

LEGEND:

— EXISTING ROAD

MERIT ENERGY COMPANY

HYLBOM A-12
 SE 1/4 NW 1/4, SECTION 30, T23S, R34W, 6th P.M.
 FINNEY COUNTY, KANSAS

SURVEYED BY	DATE	REVISED BY	DATE
J.P.	01-12-16		
DRAWN BY	DATE		
E.C.	01-13-16		
SCALE	1" = 2000'		



UELS, LLC
 Corporate Office * 85 South 200 East
 Vernal, UT 84078 * (435) 789-1017



ACCESS ROAD MAP | **TOPO B**