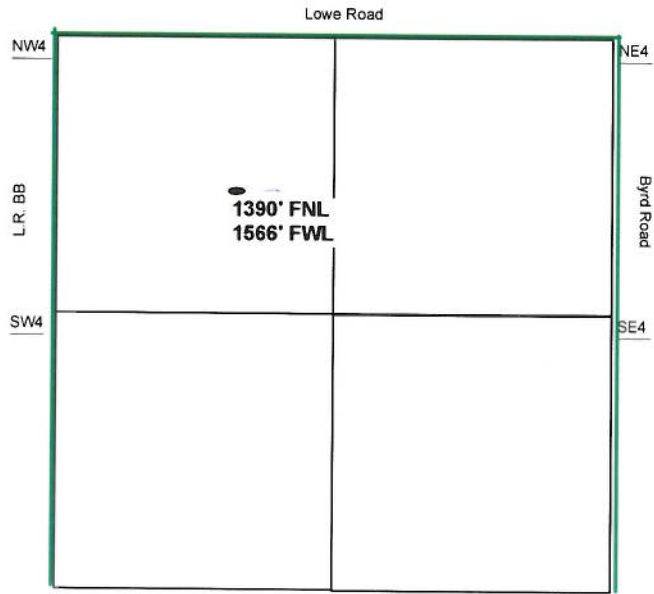
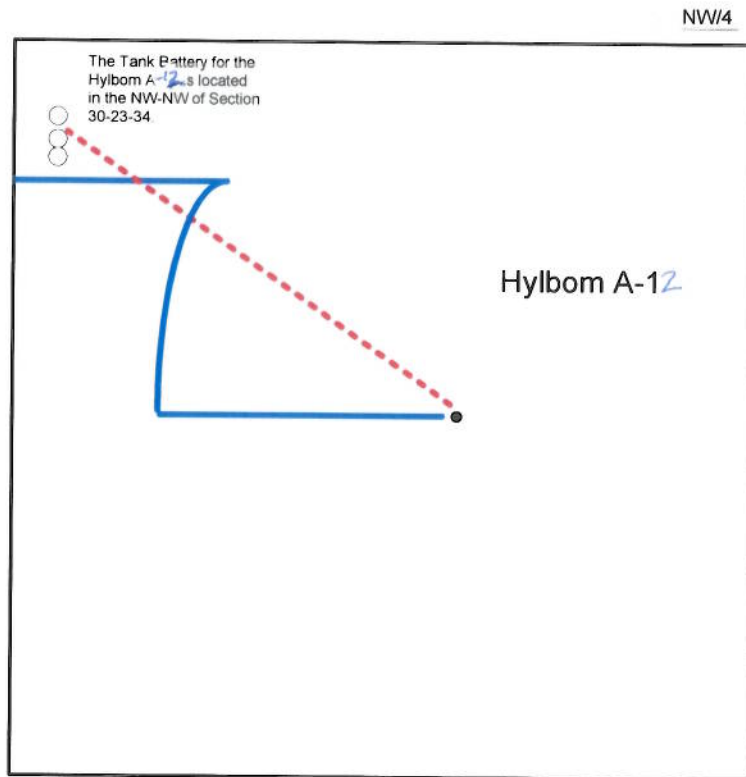


Proposed Plan of Construction
 Hylbom A-12
 Sec 30 T23S-R34W
 Finney County, KS



Sec 30 - T23S - R34W



Proposed Details of
 NW/4 Sec 30 - T23S - R34W

Proposed Site Diagram
 Hylbom A-12
 October 9, 2015

Note-Drawing **Not** to Scale