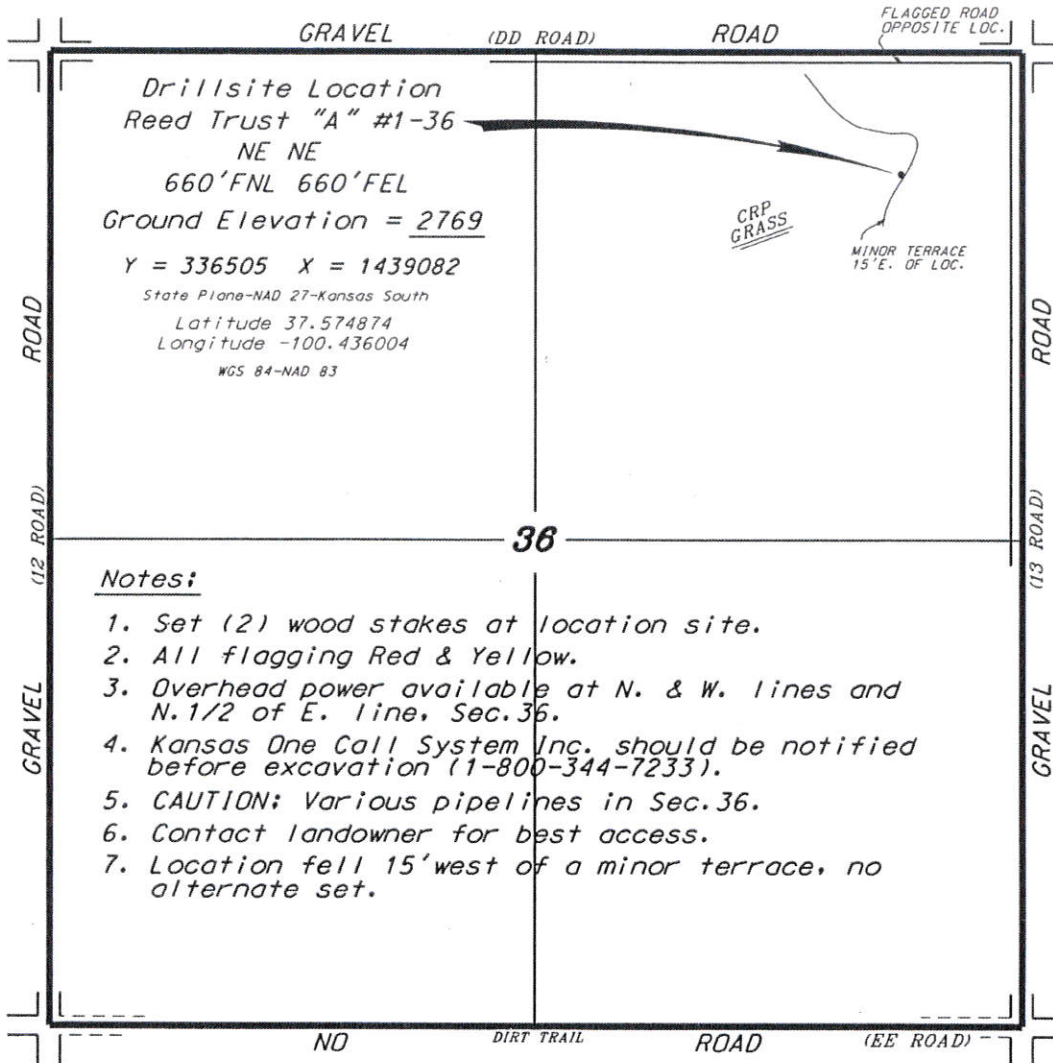


MCCOY PETROLEUM CORPORATION
 REED LEASE
 NE.1/4, SECTION 36, T28S, R29W
 GRAY COUNTY, KANSAS

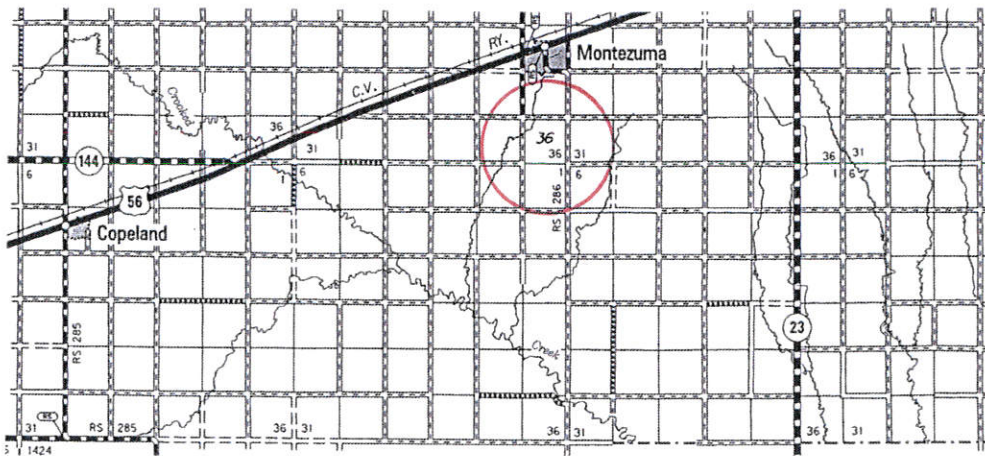


Drillsite Location
 Reed Trust "A" #1-36
 NE NE
 660'FNL 660'FEL
 Ground Elevation = 2769
 Y = 336505 X = 1439082
 State Plane-NAD 27-Kansas South
 Latitude 37.574874
 Longitude -100.436004
 WGS 84-NAD 83

Notes:

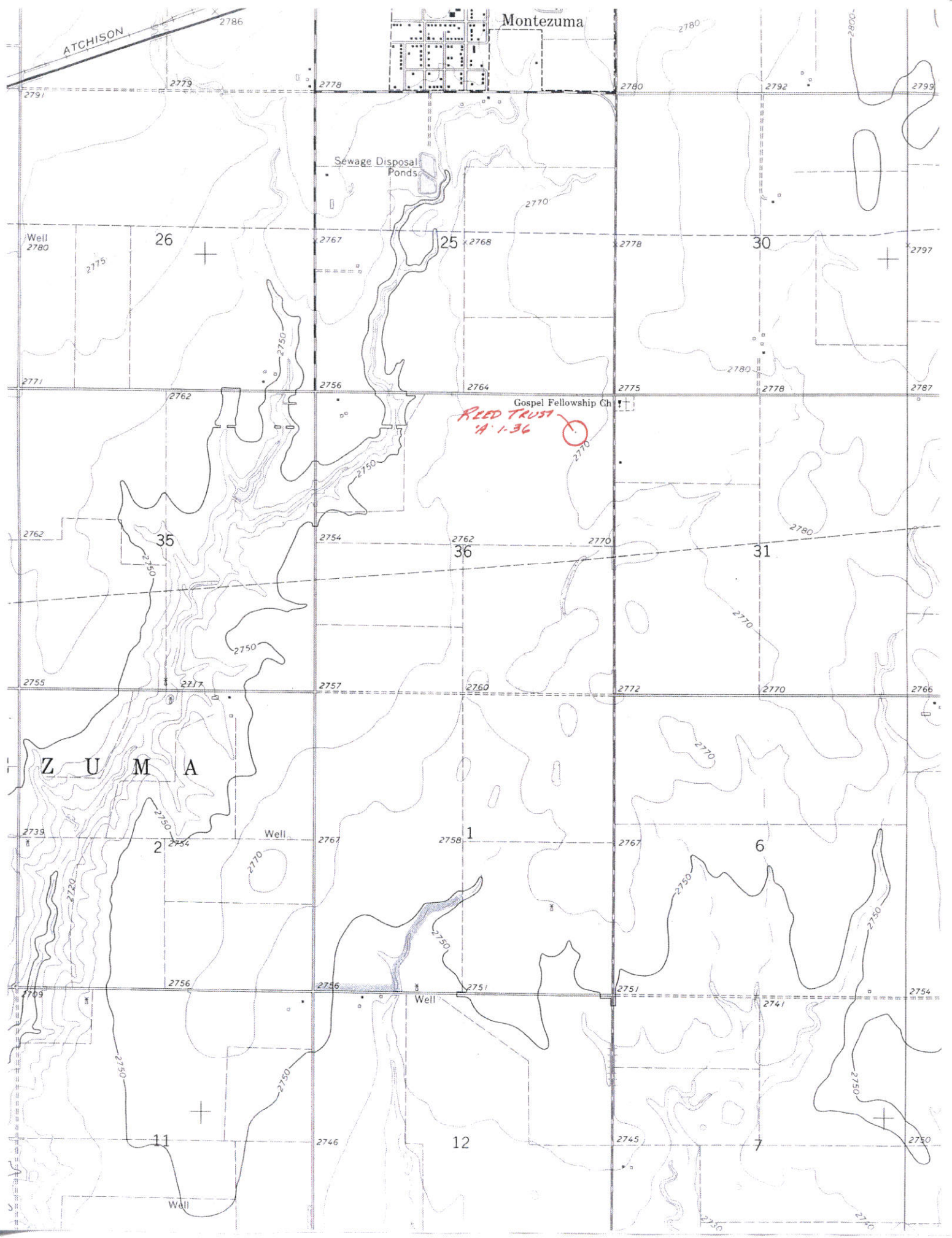
1. Set (2) wood stakes at location site.
2. All flagging Red & Yellow.
3. Overhead power available at N. & W. lines and N.1/2 of E. line, Sec.36.
4. Kansas One Call System Inc. should be notified before excavation (1-800-344-7233).
5. CAUTION: Various pipelines in Sec.36.
6. Contact landowner for best access.
7. Location fell 15' west of a minor terrace, no alternate set.

*Ingress and egress to location as shown on this plat is for usage only and may not be legally opened for public use. Contact landowner, tenant and county road department for access.



* Controlling data is based upon the best maps and photographs available to us and upon a regular section of land containing 640 acres.
 * Approximate section lines were determined using the normal standard of care of oilfield surveyors practicing in the state of Kansas. The section corners, which establish the precise section lines, were not necessarily located, and the exact location of the drillsite location in the section is not guaranteed. Therefore, the operator securing this service and accepting this plat and all other parties relying thereon agree to hold Central Kansas Oilfield Services, Inc., its officers and employees harmless from all losses, costs and expenses and said entities released from any liability from incidental or consequential damages.
 * Elevations derived from National Geodetic Vertical Datum.

Date February 7, 2017



ATCHISON

Montezuma

Sewage Disposal Ponds

Gospel Fellowship Ch.

REED TRUST
4-1-36

Z U M A

26

25

30

35

36

31

2

1

6

11

12

7

Well 2780

2739

Well

Well

Wall

2786

2779

2778

2780

2792

2799

2791

2775

2767

2768

2778

2797

2771

2762

2756

2764

2775

2780

2787

2762

2762

2754

2762

2770

2780

2755

2755

2757

2760

2772

2770

2766

2739

2754

2767

2758

2767

2770

2749

2756

2756

2751

2751

2741

2754

2746

2745

2745

2750

2750

2750