



TRILOBITE TESTING, INC

DRILL STEM TEST REPORT

Herman L. Loeb, LLC.

25/29S/19W Kiowa, KS

P.O. Box 838
Lawrenceville, IL 62439
ATTN: George Payne/Jon Chr

Yost C 2-25

Job Ticket: 63083

DST#: 3

Test Start: 2016.09.24 @ 02:27:00

GENERAL INFORMATION:

Formation: **Mississippian Chert**

Deviated: No Whipstock: ft (KB)

Time Tool Opened: 04:35:30

Time Test Ended: 10:08:30

Test Type: Conventional Bottom Hole (Initial)

Tester: Jimmy Ricketts

Unit No: 80

Interval: 4990.00 ft (KB) To 5021.00 ft (KB) (TVD)

Reference Elevations: 2312.00 ft (KB)

Total Depth: 5021.00 ft (KB) (TVD)

2301.00 ft (CF)

Hole Diameter: 7.88 inches Hole Condition: Fair

KB to GR/CF: 11.00 ft

Serial #: 9124

Press@RunDepth: 34.07 psig @ ft (KB)

Capacity: 8000.00 psig

Start Date: 2016.09.24

End Date:

2016.09.24

Last Calib.:

1899.12.30

Start Time: 02:27:05

End Time:

10:08:29

Time On Btm:

2016.09.24 @ 04:34:15

Time Off Btm:

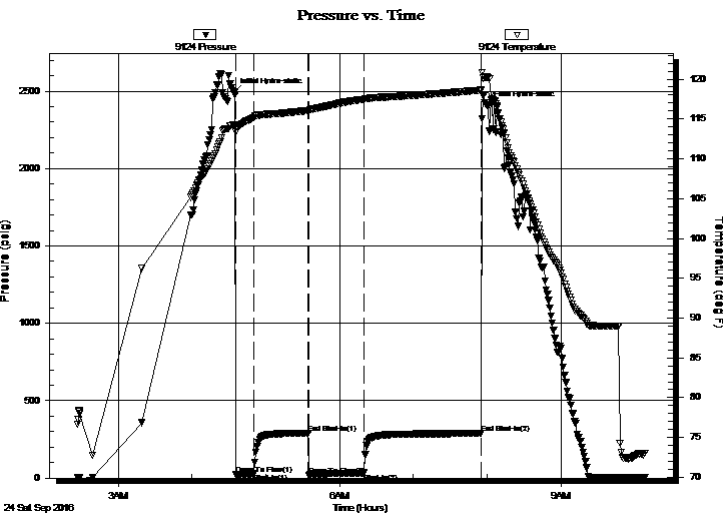
2016.09.24 @ 07:59:45

TEST COMMENT: IF - Weak blow building to strong blow 8 minutes into initial flow period.

IS - 1/2 inch blow back during initial shut-in period.

FF - Strong blow throughout final flow period.

FS - Gas to surface during final shut-in period. 6 inch blow back during final shut-in period.



PRESSURE SUMMARY

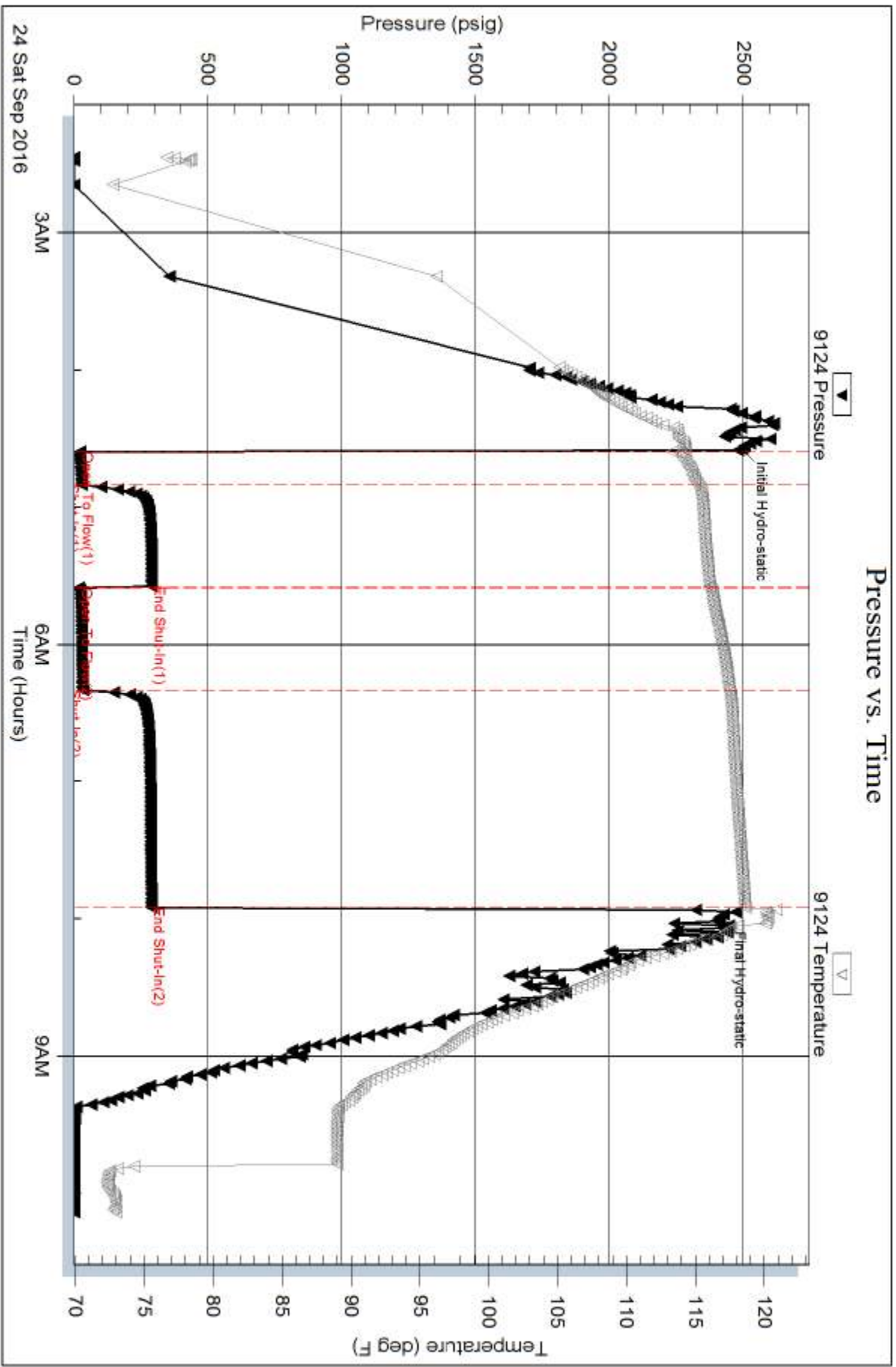
| Time (Min.) | Pressure (psig) | Temp (deg F) | Annotation |
|-------------|-----------------|--------------|----------------------|
| 0 | 2491.31 | 114.28 | Initial Hydro-static |
| 2 | 23.16 | 113.33 | Open To Flow (1) |
| 16 | 28.27 | 115.16 | Shut-In(1) |
| 61 | 289.88 | 116.04 | End Shut-In(1) |
| 61 | 18.27 | 116.00 | Open To Flow (2) |
| 106 | 34.07 | 117.46 | Shut-In(2) |
| 201 | 288.86 | 118.60 | End Shut-In(2) |
| 206 | 2409.83 | 120.24 | Final Hydro-static |

Recovery

| Length (ft) | Description | Volume (bbl) |
|-------------|----------------------------------------------|--------------|
| 20.00 | Very slightly oil spotted mud TR O 100% N.10 | |
| | | |
| | | |
| | | |
| | | |

Gas Rates

| Choke (inches) | Pressure (psig) | Gas Rate (Mcf/d) |
|----------------|-----------------|------------------|
| | | |

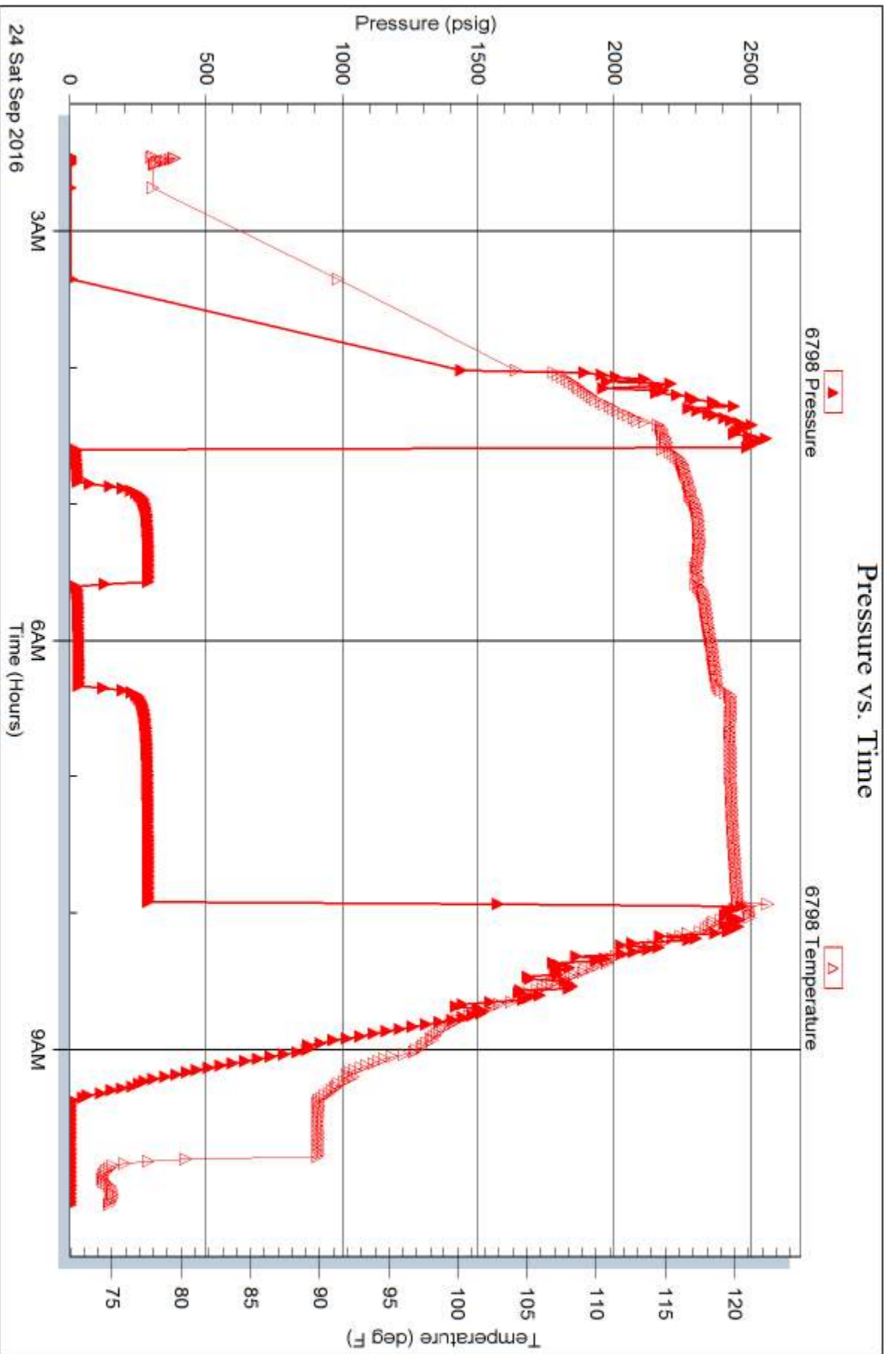


Serial #: 6798

Herman L. Loeb, LLC.

Yost C-2-25

DST Test Number: 3



Trilobite Testing, Inc

Ref. No: 63083

Printed: 2016.09.24 @ 11:30:01