



TRILOBITE TESTING, INC

DRILL STEM TEST REPORT

Suemaour Expl. & Prod. LLC

35 6s 28w Sheridan

539 N Carancahua Ste 1100
Corpus Christi TX 78401

Schroeder 2-35

Job Ticket: 63115

DST#: 1

ATTN: Bob Peterson

Test Start: 2016.09.16 @ 06:24:00

GENERAL INFORMATION:

Formation: **LKC " C "**

Deviated: No Whipstock: ft (KB)

Time Tool Opened: 08:26:45

Time Test Ended: 14:30:00

Test Type: Conventional Bottom Hole (Initial)

Tester: Jim Svaty

Unit No: 76

Interval: 3870.00 ft (KB) To 3896.00 ft (KB) (TVD)

Reference Elevations: 2689.00 ft (KB)

Total Depth: 3896.00 ft (KB) (TVD)

2684.00 ft (CF)

Hole Diameter: 7.88 inches Hole Condition: Fair

KB to GR/CF: 5.00 ft

Serial #: 8289 Outside

Press@RunDepth: 227.43 psig @ 3873.00 ft (KB)

Capacity: 8000.00 psig

Start Date: 2016.09.16

End Date:

2016.09.16

Last Calib.:

2016.09.16

Start Time: 06:24:02

End Time:

14:30:00

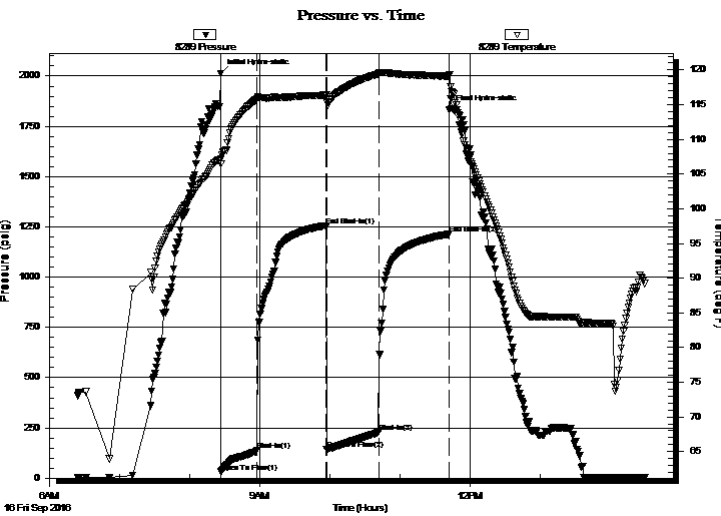
Time On Btm:

2016.09.16 @ 08:26:15

Time Off Btm:

2016.09.16 @ 11:42:15

TEST COMMENT: 30-IFP- BOB in 13min.
60-ISIP- Surface Blow Building to 4 1/2in. In 23min. Died Back in 28min.
45-FFP- BOB in 13min.
60-FSIP- Surface Blow Building to 7in. In 30min. Died Back in 46min.



PRESSURE SUMMARY

| Time (Min.) | Pressure (psig) | Temp (deg F) | Annotation |
|-------------|-----------------|--------------|----------------------|
| 0 | 2013.64 | 107.14 | Initial Hydro-static |
| 1 | 31.23 | 106.51 | Open To Flow (1) |
| 31 | 137.44 | 115.79 | Shut-In(1) |
| 91 | 1256.19 | 116.36 | End Shut-In(1) |
| 91 | 143.16 | 115.74 | Open To Flow (2) |
| 136 | 227.43 | 119.41 | Shut-In(2) |
| 196 | 1213.56 | 119.12 | End Shut-In(2) |
| 196 | 1834.21 | 119.36 | Final Hydro-static |

Recovery

| Length (ft) | Description | Volume (bbl) |
|-------------|----------------------|--------------|
| 124.00 | Oil Speck Water 100% | 0.61 |
| 125.00 | GMCO 5%g 10%m 85%o | 1.19 |
| 277.00 | GCO 10%g 90%o | 3.89 |
| | | |
| | | |

Gas Rates

| | Choke (inches) | Pressure (psig) | Gas Rate (Mcf/d) |
|--|----------------|-----------------|------------------|
| | | | |



**TRILOBITE
TESTING, INC**

DRILL STEM TEST REPORT

Suemaour Expl. & Prod. LLC

35 6s 28w Sheridan

539 N Carancahua Ste 1100
Corpus Christi TX 78401

Schroeder 2-35

Job Ticket: 63115

DST#: 1

ATTN: Bob Peterson

Test Start: 2016.09.16 @ 06:24:00

GENERAL INFORMATION:

Formation: **LKC " C "**

Deviated: No Whipstock: ft (KB)

Time Tool Opened: 08:26:45

Time Test Ended: 14:30:00

Test Type: Conventional Bottom Hole (Initial)

Tester: Jim Svaty

Unit No: 76

Interval: 3870.00 ft (KB) To 3896.00 ft (KB) (TVD)

Reference Elevations: 2689.00 ft (KB)

Total Depth: 3896.00 ft (KB) (TVD)

2684.00 ft (CF)

Hole Diameter: 7.88 inches Hole Condition: Fair

KB to GR/CF: 5.00 ft

Serial #: 8789 **Inside**

Press@RunDepth: psig @ 3873.00 ft (KB)

Capacity: 8000.00 psig

Start Date: 2016.09.16

End Date: 2016.09.16

Last Calib.: 2016.09.16

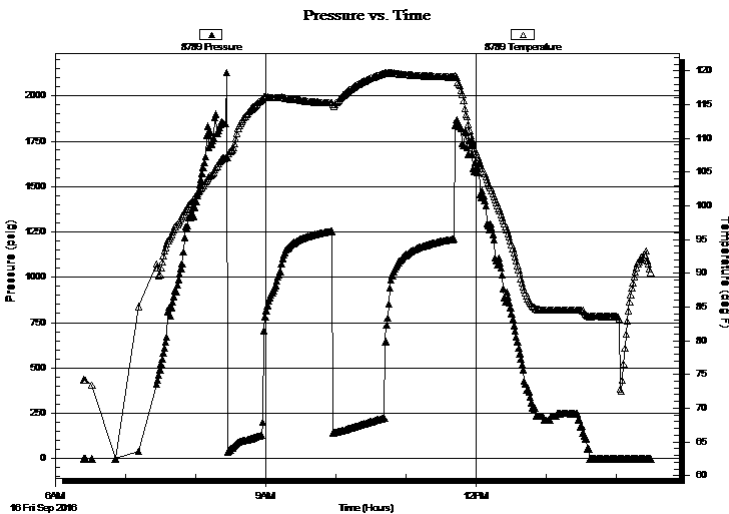
Start Time: 06:24:02

End Time: 14:30:00

Time On Btm:

Time Off Btm:

TEST COMMENT: 30-IFP- BOB in 13min.
60-ISIP- Surface Blow Building to 4 1/2in. In 23min. Died Back in 28min.
45-FFP- BOB in 13min.
60-FSIP- Surface Blow Building to 7in. In 30min. Died Back in 46min.



PRESSURE SUMMARY

| Time (Min.) | Pressure (psig) | Temp (deg F) | Annotation |
|-------------|-----------------|--------------|------------|
| | | | |
| | | | |
| | | | |
| | | | |
| | | | |

Recovery

| Length (ft) | Description | Volume (bbl) |
|-------------|----------------------|--------------|
| 124.00 | Oil Speck Water 100% | 0.61 |
| 125.00 | GMCO 5%g 10%m 85%o | 1.19 |
| 277.00 | GCO 10%g 90%o | 3.89 |
| | | |
| | | |

Gas Rates

| | Choke (inches) | Pressure (psig) | Gas Rate (Mcf/d) |
|--|----------------|-----------------|------------------|
| | | | |



**TRILOBITE
TESTING, INC**

DRILL STEM TEST REPORT

FLUID SUMMARY

Suemaaur Expl. & Prod. LLC

35 6s 28w Sheridan

539 N Carancahua Ste 1100
Corpus Christi TX 78401

Schroeder 2-35

Job Ticket: 63115

DST#: 1

ATTN: Bob Peterson

Test Start: 2016.09.16 @ 06:24:00

Mud and Cushion Information

Mud Type: Gel Chem

Cushion Type:

Oil API:

31 deg API

Mud Weight: 9.00 lb/gal

Cushion Length:

ft

Water Salinity:

47000 ppm

Viscosity: 58.00 sec/qt

Cushion Volume:

bbbl

Water Loss: 6.00 in³

Gas Cushion Type:

Resistivity: ohm.m

Gas Cushion Pressure:

psig

Salinity: 600.00 ppm

Filter Cake: 4.00 inches

Recovery Information

Recovery Table

| Length ft | Description | Volume bbbl |
|--------------|----------------------|----------------|
| 124.00 | Oil Speck Water 100% | 0.610 |
| 125.00 | GMCO 5%g 10%m 85%o | 1.189 |
| 277.00 | GCO 10%g 90%o | 3.886 |

Total Length: 526.00 ft

Total Volume: 5.685 bbl

Num Fluid Samples: 0

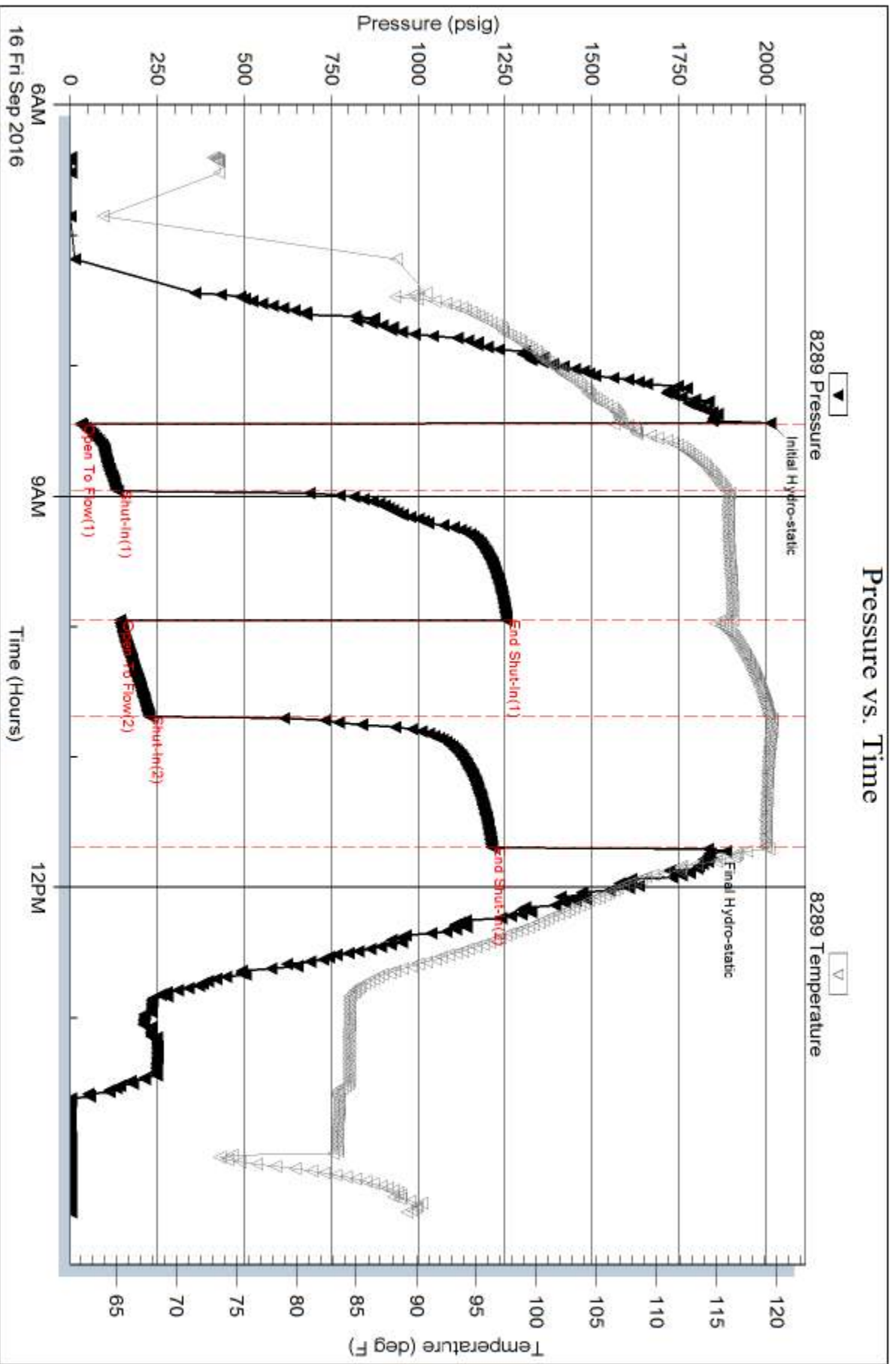
Num Gas Bombs: 0

Serial #:

Laboratory Name:

Laboratory Location:

Recovery Comments: .130 @ 86



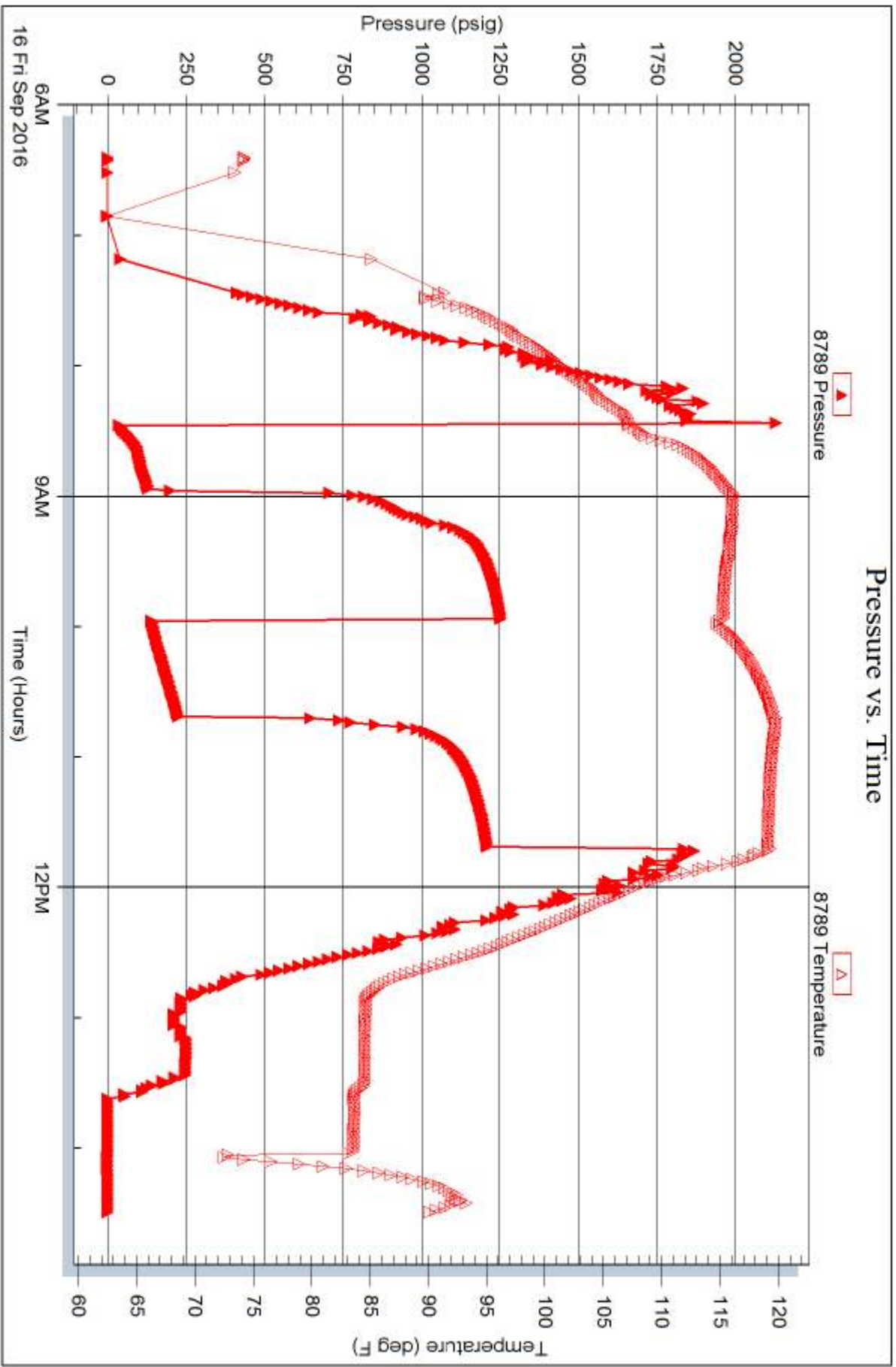
Serial #: 8789

Inside

Suenaux Expl. & Prod. LLC

Schroeder 2-35

DST Test Number: 1



Trilobite Testing, Inc

Ref. No: 63115

Printed: 2016.09.16 @ 14:48:19



TRILOBITE TESTING, INC

DRILL STEM TEST REPORT

Suemaaur Expl. & Prod. LLC

35 6s 28w Sheridan

539 N Carancahua Ste 1100
Corpus Christi TX 78401

Schroeder 2-35

Job Ticket: 63116

DST#: 2

ATTN: Bob Peterson

Test Start: 2016.09.17 @ 01:45:00

GENERAL INFORMATION:

Formation: **LKC " G "**

Deviated: No Whipstock: ft (KB)

Time Tool Opened: 04:27:00

Time Test Ended: 09:42:00

Test Type: Conventional Bottom Hole (Reset)

Tester: Jim Svaty

Unit No: 76

Interval: 3933.00 ft (KB) To 3949.00 ft (KB) (TVD)

Reference Elevations: 2689.00 ft (KB)

Total Depth: 3949.00 ft (KB) (TVD)

2684.00 ft (CF)

Hole Diameter: 7.88 inches Hole Condition: Fair

KB to GR/CF: 5.00 ft

Serial #: 8289 Outside

Press@RunDepth: 42.16 psig @ 3936.00 ft (KB)

Capacity: 8000.00 psig

Start Date: 2016.09.17 End Date: 2016.09.17

Last Calib.: 2016.09.17

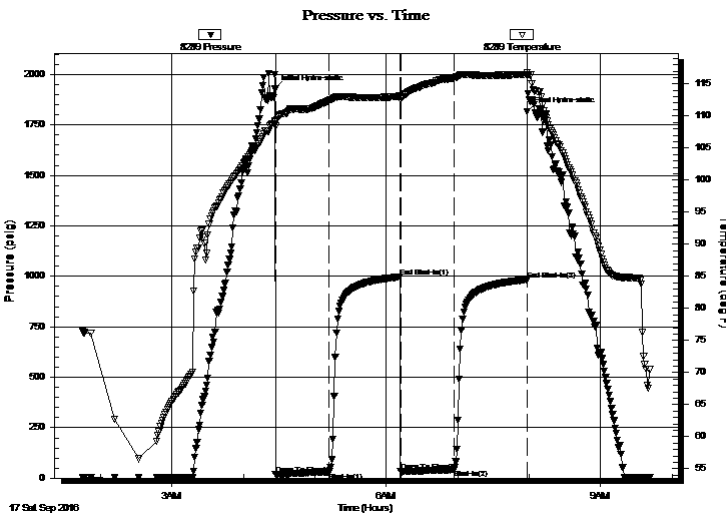
Start Time: 01:45:02 End Time: 09:42:00

Time On Btm: 2016.09.17 @ 04:26:45

Time Off Btm: 2016.09.17 @ 07:58:15

TEST COMMENT: 45-IFP- 1/4in. Blow
60-ISIP- No Blow
45-FFP- Weak Surface Blow in. 19min.
60-FSIP- No Blow

PRESSURE SUMMARY



| Time (Min.) | Pressure (psig) | Temp (deg F) | Annotation |
|-------------|-----------------|--------------|----------------------|
| 0 | 1927.83 | 109.29 | Initial Hydro-static |
| 1 | 19.59 | 108.43 | Open To Flow (1) |
| 45 | 30.81 | 112.35 | Shut-In(1) |
| 105 | 997.49 | 113.08 | End Shut-In(1) |
| 106 | 32.11 | 112.70 | Open To Flow (2) |
| 150 | 42.16 | 115.93 | Shut-In(2) |
| 212 | 983.71 | 116.47 | End Shut-In(2) |
| 212 | 1817.12 | 116.79 | Final Hydro-static |

Recovery

| Length (ft) | Description | Volume (bbl) |
|-------------|-----------------|--------------|
| 26.00 | OCM 25% o 75% m | 0.13 |
| | | |
| | | |
| | | |
| | | |

* Recovery from multiple tests

Gas Rates

| Choke (inches) | Pressure (psig) | Gas Rate (Mcf/d) |
|----------------|-----------------|------------------|
| | | |



**TRILOBITE
TESTING, INC**

DRILL STEM TEST REPORT

Suemaaur Expl. & Prod. LLC

35 6s 28w Sheridan

539 N Carancahua Ste 1100
Corpus Christi TX 78401

Schroeder 2-35

Job Ticket: 63116

DST#: 2

ATTN: Bob Peterson

Test Start: 2016.09.17 @ 01:45:00

GENERAL INFORMATION:

Formation: **LKC " G "**

Deviated: No Whipstock: ft (KB)

Time Tool Opened: 04:27:00

Time Test Ended: 09:42:00

Test Type: Conventional Bottom Hole (Reset)

Tester: Jim Svaty

Unit No: 76

Interval: 3933.00 ft (KB) To 3949.00 ft (KB) (TVD)

Reference Elevations: 2689.00 ft (KB)

Total Depth: 3949.00 ft (KB) (TVD)

2684.00 ft (CF)

Hole Diameter: 7.88 inches Hole Condition: Fair

KB to GR/CF: 5.00 ft

Serial #: 8789 Inside

Press@RunDepth: psig @ 3936.00 ft (KB)

Capacity: 8000.00 psig

Start Date: 2016.09.17 End Date: 2016.09.17

Last Calib.: 2016.09.17

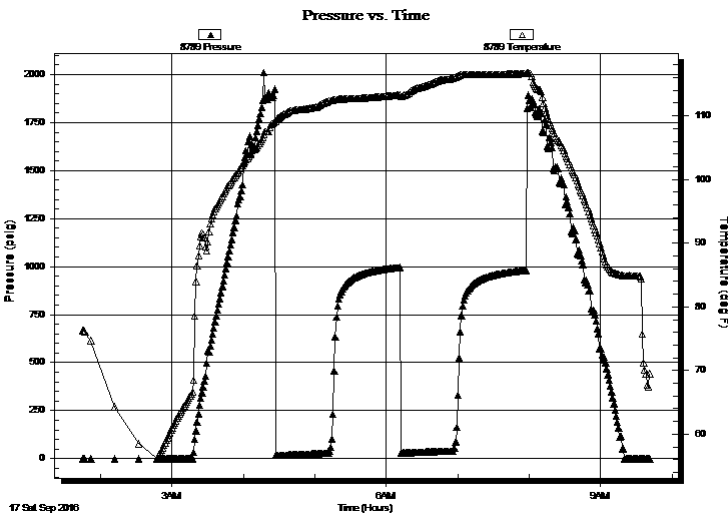
Start Time: 01:45:02 End Time: 09:41:45

Time On Btm:

Time Off Btm:

TEST COMMENT: 45-IFP- 1/4in. Blow
60-ISIP- No Blow
45-FFP- Weak Surface Blow in. 19min.
60-FSIP- No Blow

PRESSURE SUMMARY



| Time (Min.) | Pressure (psig) | Temp (deg F) | Annotation |
|-------------|-----------------|--------------|------------|
| | | | |
| | | | |
| | | | |
| | | | |
| | | | |
| | | | |
| | | | |
| | | | |
| | | | |
| | | | |

Recovery

| Length (ft) | Description | Volume (bbl) |
|-------------|---------------|--------------|
| 26.00 | OCM 25%o 75%m | 0.13 |
| | | |
| | | |
| | | |
| | | |

Gas Rates

| Choke (inches) | Pressure (psig) | Gas Rate (Mcf/d) |
|----------------|-----------------|------------------|
| | | |

* Recovery from multiple tests



**TRILOBITE
TESTING, INC**

DRILL STEM TEST REPORT

FLUID SUMMARY

Suemaur Expl. & Prod. LLC

35 6s 28w Sheridan

539 N Carancahua Ste 1100
Corpus Christi TX 78401

Schroeder 2-35

Job Ticket: 63116

DST#: 2

ATTN: Bob Peterson

Test Start: 2016.09.17 @ 01:45:00

Mud and Cushion Information

Mud Type: Gel Chem

Cushion Type:

Oil API:

deg API

Mud Weight: 9.00 lb/gal

Cushion Length:

ft

Water Salinity:

ppm

Viscosity: 58.00 sec/qt

Cushion Volume:

bbbl

Water Loss: 5.60 in³

Gas Cushion Type:

Resistivity: ohm.m

Gas Cushion Pressure:

psig

Salinity: 600.00 ppm

Filter Cake: 10.00 inches

Recovery Information

Recovery Table

| Length ft | Description | Volume bbl |
|--------------|---------------|---------------|
| 26.00 | OCM 25%o 75%m | 0.128 |

Total Length: 26.00 ft Total Volume: 0.128 bbl

Num Fluid Samples: 0

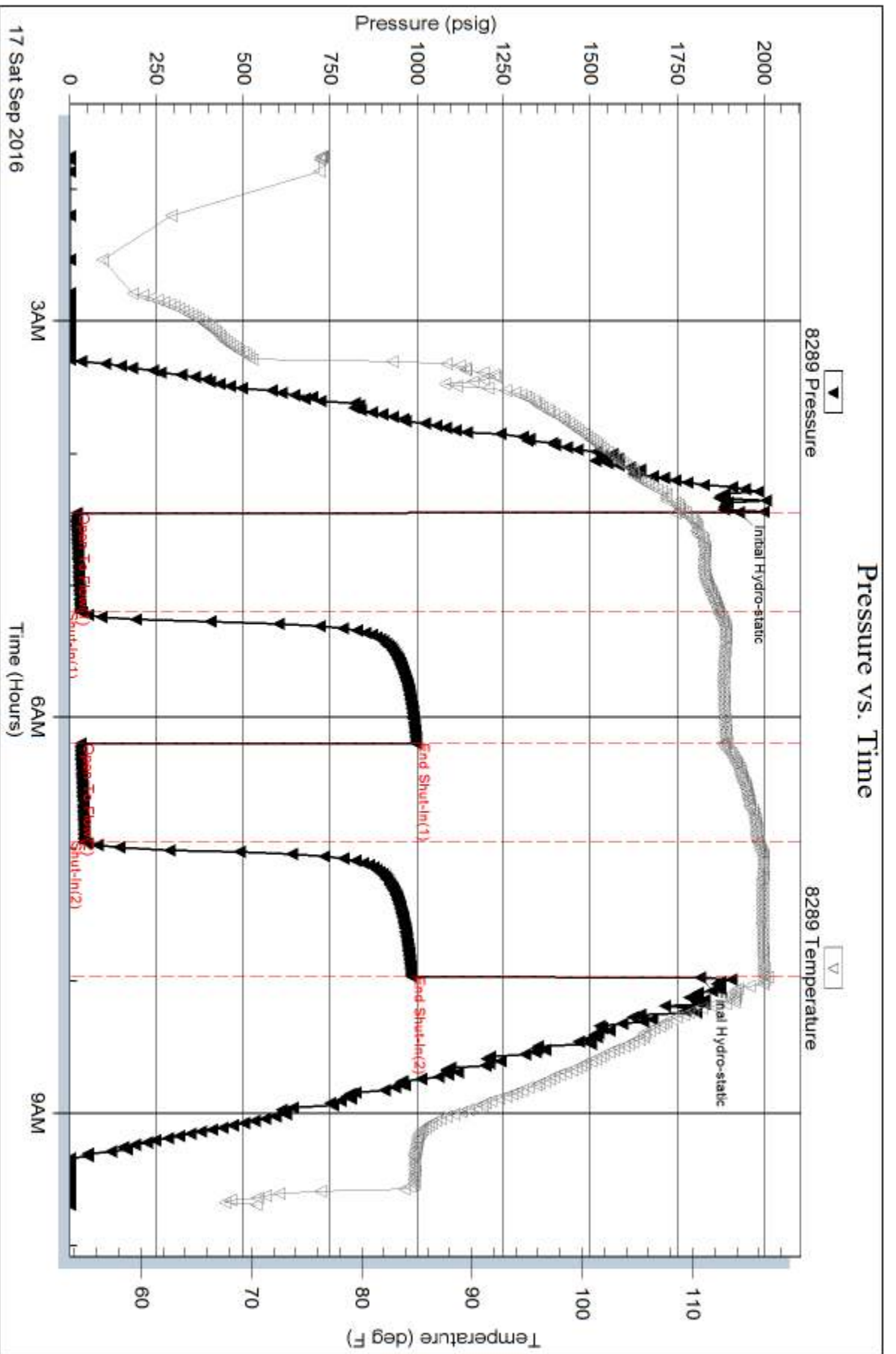
Num Gas Bombs: 0

Serial #:

Laboratory Name:

Laboratory Location:

Recovery Comments:



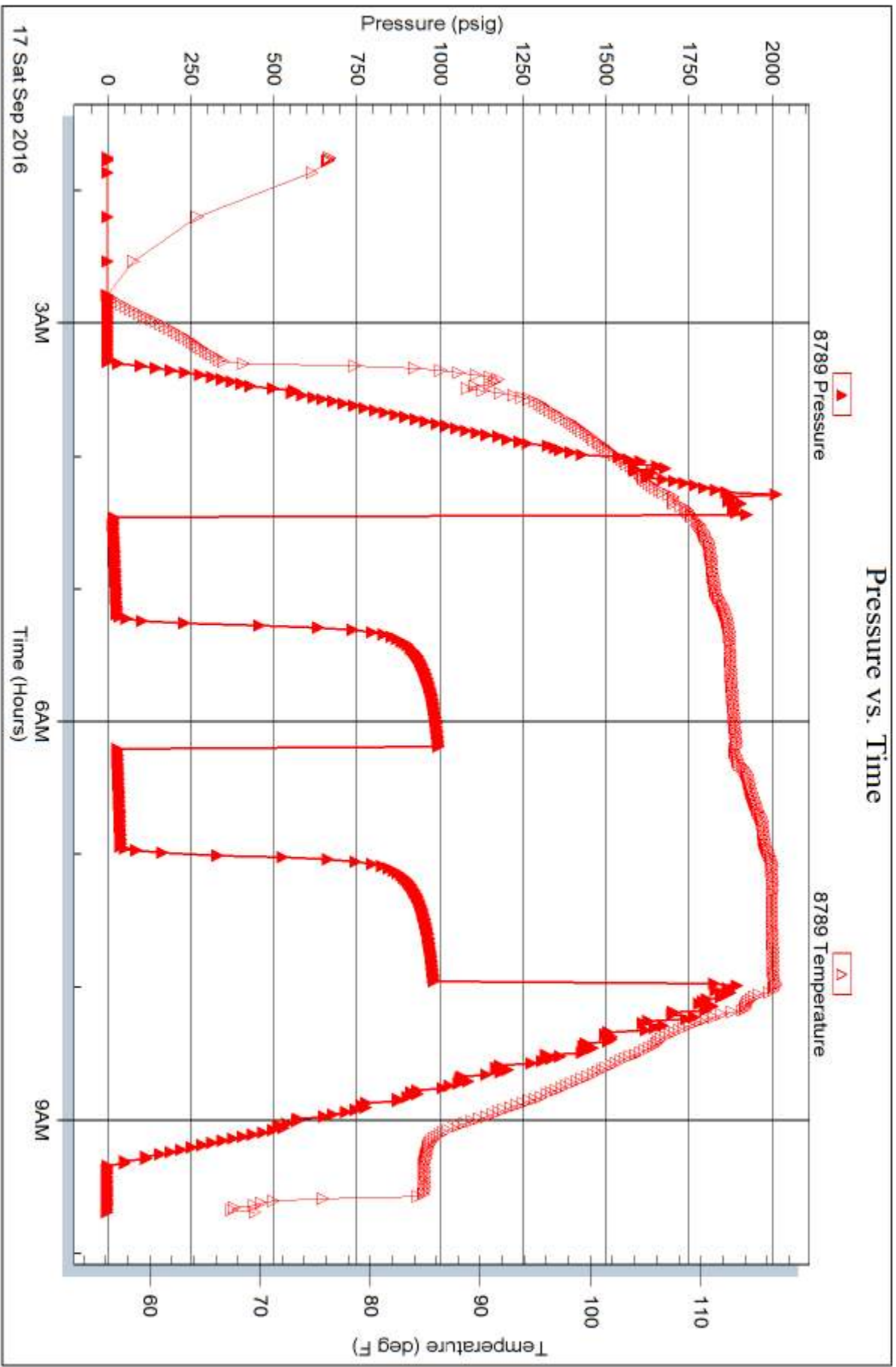
Serial #: 8789

Inside

Suenaux Expl. & Prod. LLC

Schroeder 2-35

DST Test Number: 2



Trilobite Testing, Inc

Ref. No: 63116

Printed: 2016.09.17 @ 12:53:03