



# DRILL STEM TEST REPORT

Shelby Resources LLC

**18-18s-14w**

621 17th STE 1155  
Denver Co, 80293+1101

**Schneider Unit #1-18**

Job Ticket: 61862

**DST#: 2**

ATTN: Jeremy Schwartz/ Chr

Test Start: 2016.11.22 @ 12:29:00

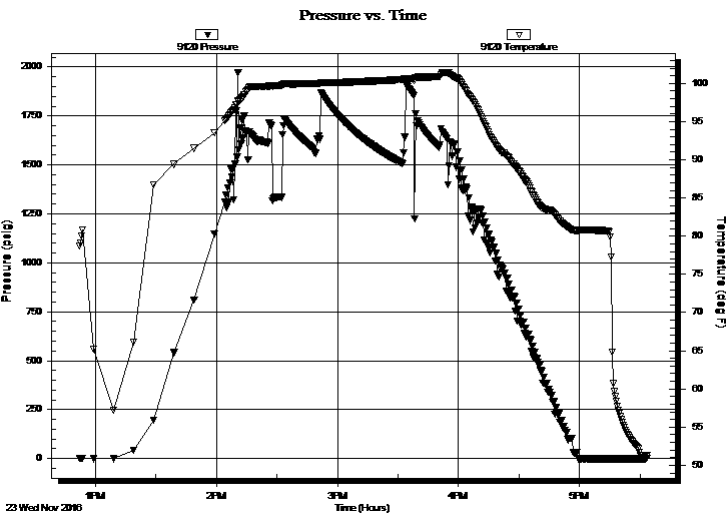
**GENERAL INFORMATION:**

Formation: **LKC 'H-K'**  
 Deviated: No Whipstock: ft (KB)  
 Test Type: Conventional Bottom Hole (Reset)  
 Time Tool Opened:  
 Tester: Spencer J. Staab  
 Time Test Ended:  
 Unit No: 84  
**Interval: 3356.00 ft (KB) To 3461.00 ft (KB) (TVD)**  
 Reference Elevations: 1948.00 ft (KB)  
 Total Depth: 3318.00 ft (KB) (TVD) 1937.00 ft (CF)  
 Hole Diameter: 7.88 inches Hole Condition: Fair KB to GR/CF: 11.00 ft

**Serial #: 9120**

Press@RunDepth: psig @ ft (KB) Capacity: 8000.00 psig  
 Start Date: 2016.11.23 End Date: 2016.11.23 Last Calib.: 2016.11.23  
 Start Time: 12:52:15 End Time: 17:33:30 Time On Btm:  
 Time Off Btm:

**TEST COMMENT:** 15-IF-No Blow ; Flushed tool 5 min in; did not help; no Blow  
 45-ISI-No Blow Back  
 60-FF-No Blow ; Flushed tool 5 min in; did not help; Pulled tool after approx 18 mins



**PRESSURE SUMMARY**

Time (Min.)	Pressure (psig)	Temp (deg F)	Annotation

**Recovery**

Length (ft)	Description	Volume (bbl)
1.00		0.00

\* Recovery from multiple tests

**Gas Rates**

Choke (inches)	Pressure (psig)	Gas Rate (Mcf/d)

