

Marc A. Downing
Geologic Report
Consulting Petroleum Geologist
Drilling Time and Sample Log

Operator Downing-Nelson Oil Co., Inc.		Elevation	
Lease Fabrizius No. 1-2		KB	2305
API # 15-195-23015-0000		DF	2303
Field Wildcat		GL	2297
Location 429' FNL & 2210' FEL		Casing Record Surface	
Sec. 2 Twp. 14s Rgc. 22w		8 5/8" @ 220'	
County Trego State Kansas		Production 5 1/2" @ 4225'	
Formation		Electrical Surveys	
Sample tops	Log Tops	CNDL, DIL, MEL, Sonic	
Top Anhydrite 1722	1716		
Base Anhydrite 1761	1762		

Drilling Contractor **Discovery Drilling, Rig #2**
 Commenced 2-3-17 Completed 2-10-17
 Samples Saved From 3400 To RTD
 Drilling Time Kept From 3300 To RTD
 Samples Examined From 3400 To RTD
 Geological Supervision From 3400 To RTD

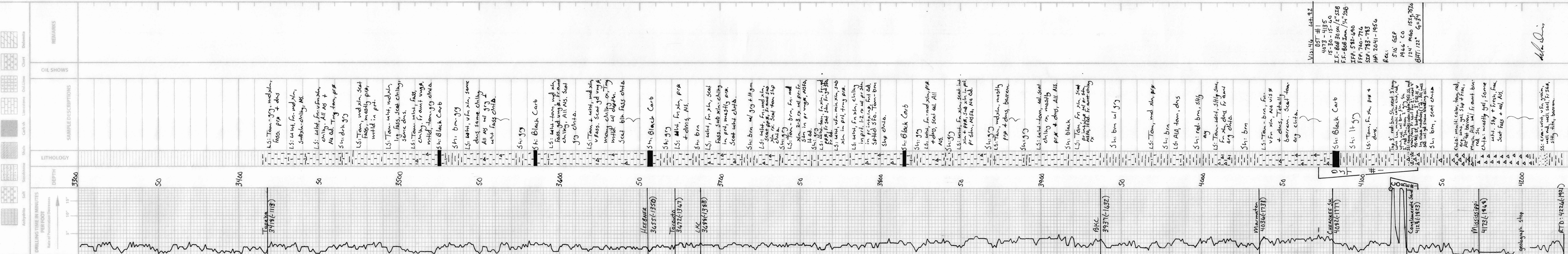
Topoka	3418	3417	-1112	+4
Heebner	3655	3655	-1350	+3
Toronto	3672	3673	-1368	+3
LKC	3688	3688	-1383	+4
BKC	3937	3937	-1632	+2
Marmaton	4036	4037	-1732	+3
Cherokee Sh.	4082	4082	-1777	+7
Conglomerate Sand	4128	4128	-1823	+7
Mississippi	4173	4174	-1869	+9
Total Depth	4226	4227	-1922	

Reference Well For Structural Comparison **DNOCI**
Fabrizius-Younger "B" #1-35 260' FSL & 2285' FWL Sec. 35-13s-22w

Due to structural position, DST recovery, and log evaluation, it was decided to set 5 1/2" production casing for completion.

Summary and Recommendations

Respectfully Submitted,
 Marc A. Downing



REMARKS
 OIL SHOWS
 VIS: 46 Lat. 92
 DST #1
 4073-4135
 15-30-15-40
 I.F.-808 30 sec / 2" SIB
 F.F.-808 Imm. / 1/4" SIB
 IFF: 582-690
 FFP: 740-776
 SIF: 783-783
 HP: 2041-1956
 Rec: 516 GIP
 1946 CO
 124' MGO 157g, 787g
 BHT: 122 G-34
 [Signature]