



Fall & Associates

Stake and Elevation Service

P.O. Box 222

Pretty Prairie, KS. 67570

785-243-7506

Date 2-16-17

Invoice Number 0217151

MURFIN DRILLING

3-1

Walter 'A'

Operator

Number

Farm Name

Rawlins-KS

1

1s

36w

990'FSL 1320'FEL

County-State

S

T

R

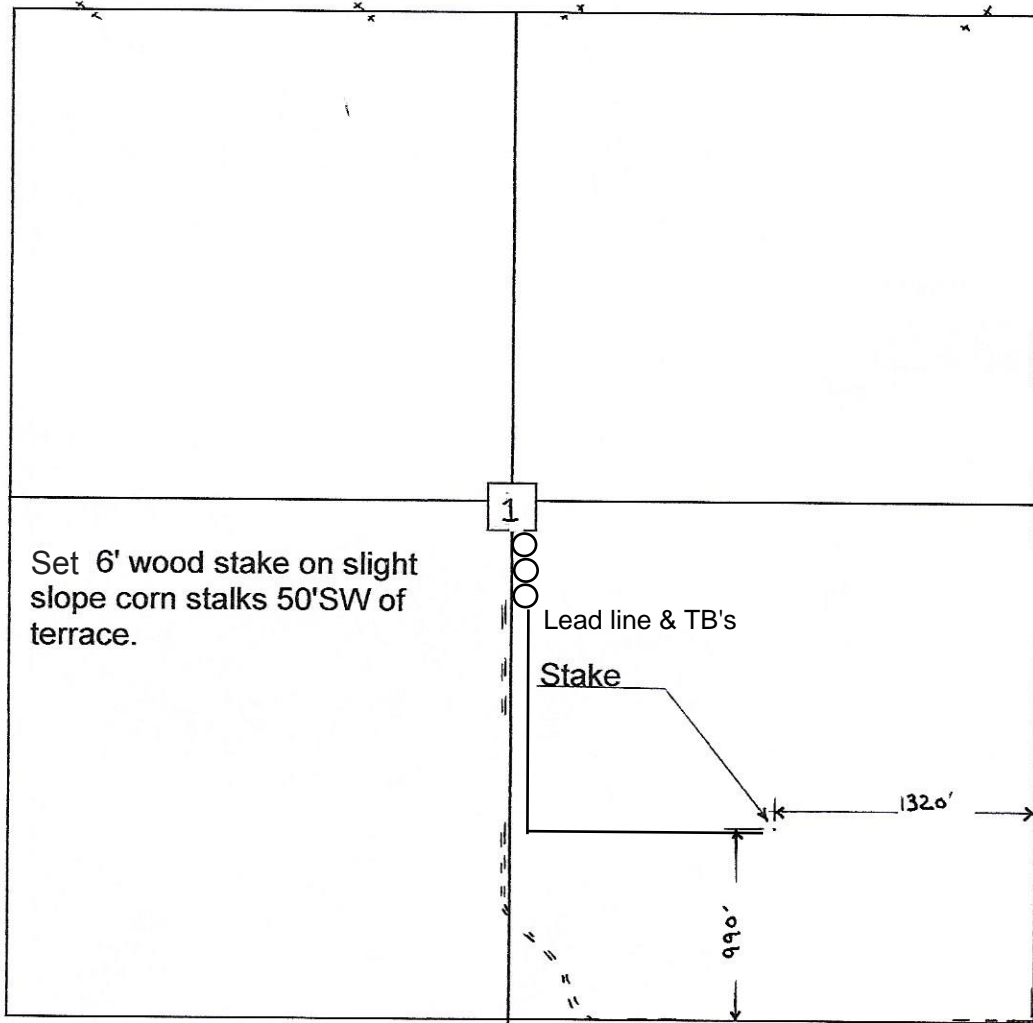
Location

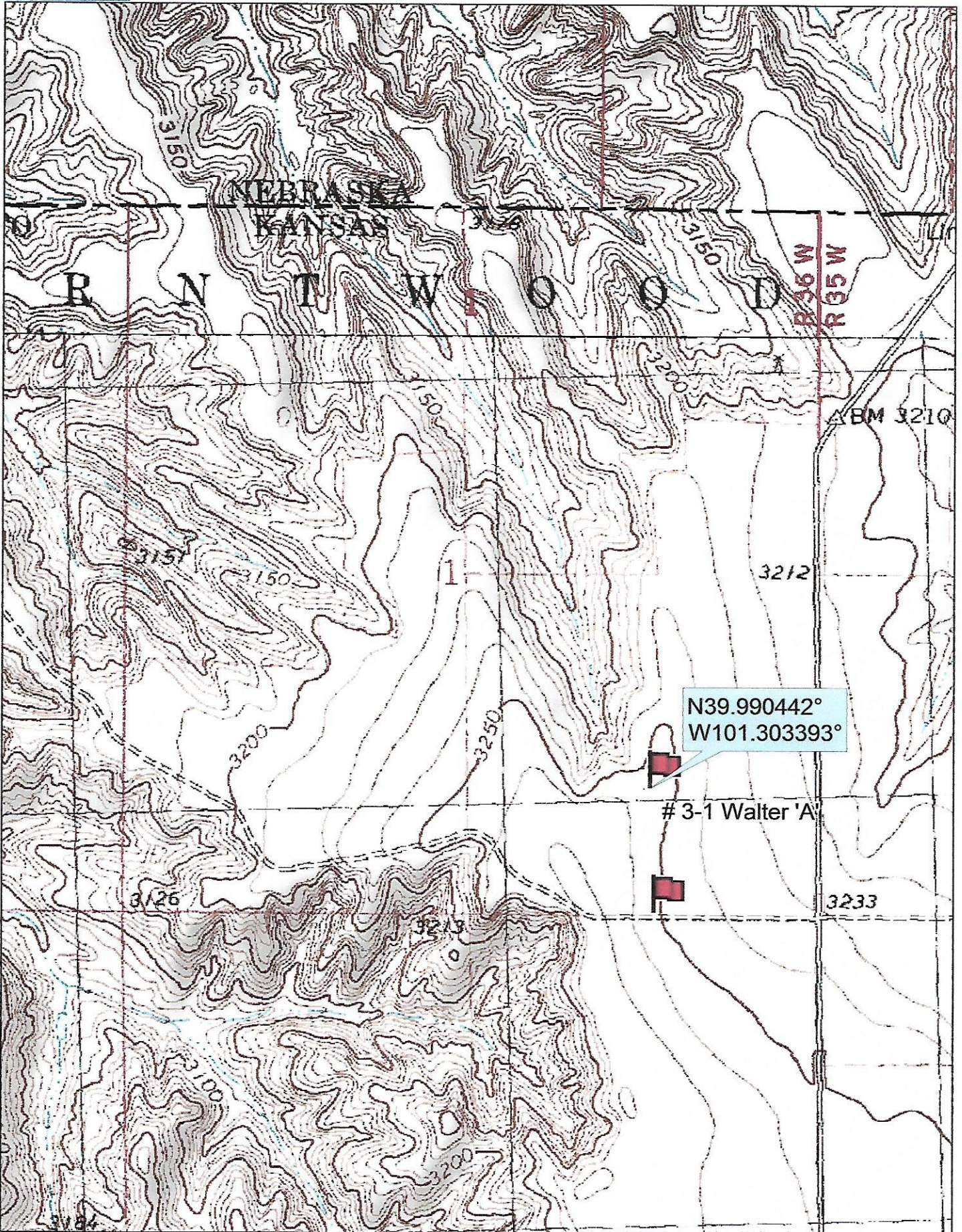
MURFIN DRILLING
250 N. Water
Suite 300
Wichita, KS. 67202

Elevation 3254 Gr.

Ordered By: Shauna

Scale 1"=1000'

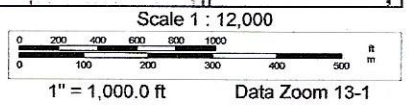
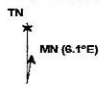




Data use subject to license.

© DeLorme. Topo North America™ 9.

www.delorme.com



Data Zoom 13-1