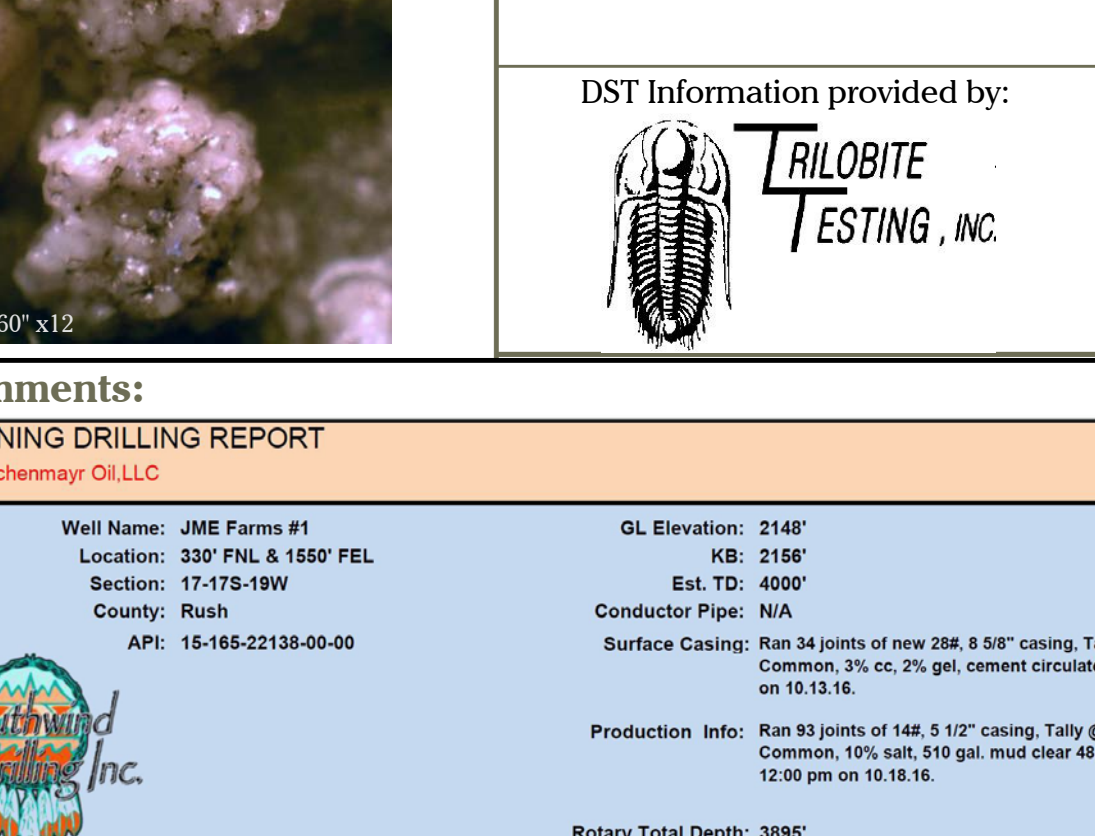


COMPANY	Lachenmayr Oil LLC	ELEVATION	K.B. 2156
LEASE	JME Farms #1	D.F.	
FIELD	Wildcat	C.L.	2148
LOCATION	330' FN. & 1550' FEL	DEPTH MEASURED FROM	KB
SEC	17 TWP	17S R6E	19W
COUNTY	Rush	STATE	Kansas
CONTRACTOR	Southwind Drilling, Inc Rig #3	Surface	8.86' @ 3000'
SPUD	10-10-16	COMP	10-18-16
SAMPLES SAVED FROM	300' TO	RTD	

FORMATION	SAMPLE	ELOG	DATE	A. DT	B. ELOG	C. ELOG
Arbuckle	1386	1349	+807	+809	+805	+808
Arbuckle	1385	1365	+770	+780	+769	+773
Heebner	3473	3469	-1318	-1311	-1323	-1316
Leadbearing	3519	3515	-1359	-1365	-1369	-1362
SAR	3522	3522	-1629	-1637	-1653	-1638
SAR	3523	3523	-1629	-1637	-1653	-1638
Pawnee	3837	3835	-1679	-1693	-1716	-1691
Conglomerate	3882	3878	-1729	-1749	-1770	-1761
Arbuckle	3889	3886	-1763	-1805	-1809	-1800
Arbuckle	3893	3893	-1797	-1794	-1834	-1823



Comments:

MORNING DRILLING REPORT

For: Lachenmayr Oil LLC

Well Name: JME Farms #1
 Location: 330' FN. & 1550' FEL
 Section: 17-17S-19W
 County: Rush
 API: 15-165-22138-00-00

OL Elevation: 2148'
 KB: 2156'
 Est. TD: 4000'
 Conductor Pipe: N/A

Surface Casings: Ran 34 joints of new 28.9 9 3/8" casing, Tally @ 1339.05', Set @ 1349', used 475 sacks of Common, 3% cc, 2% gel, cement circulated, by Quality (Ticket #3024), plug down @ 3.45 am on 10.13.16.

Production Info: Ran 83 joints of 142, 5 1/2" casing, Tally @ 3888.12', Set @ 3891.12', used 180 sacks of Common, 10% salt, 510 gal. mud clud 48, cemented, by Quality (Ticket #3051), job complete @ 12:00 pm on 10.18.16.

Log Total Depth: 3895'
 Rotary Total Depth: 3895'
 Geologist: Frank Mize

7:00 A.M. Depth: 3895'		10/11/16		10/12/16		10/13/16		10/14/16		10/15/16		10/16/16		10/17/16		10/18/16		Total
Spud Date & Time:	10/11/16 @ 7:30 PM	Day 1	Day 2	Day 3	Day 4	Day 5	Day 6	Day 7	Day 8	Day 9	Day 10	Day 11	Day 12	Day 13	Day 14	Day 15	Day 16	
Total Depth (7:00am)	0	498	491	851	870	306	366	366	366	366	366	366	366	366	366	366	366	3895
Daily Progress	0	498	491	851	870	306	366	366	366	366	366	366	366	366	366	366	366	3895
Ft. Per Hr.	70.04	58.11	73.28	44.62	30.38	22.92	12.00	12.00	12.00	12.00	12.00	12.00	12.00	12.00	12.00	12.00	12.00	47.78
Current Operation (7:00am)	Rig Up	Surface	Clay / Redbed	Clay / Redbed	Clay / Redbed	Clay / Redbed	Clay / Redbed	Clay / Redbed	Clay / Redbed	Clay / Redbed	Clay / Redbed	Clay / Redbed	Clay / Redbed	Clay / Redbed	Clay / Redbed	Clay / Redbed	Clay / Redbed	Arbuckle
Fuel Used (38 Gallons)	195.00	273.00	273.00	429.00	312.00	351.00	156.00	156.00	156.00	156.00	156.00	156.00	156.00	156.00	156.00	156.00	156.00	2087.00
Survey (degree & depth)		1° @ 1349'					1° @ 3892'											
Mud Cost	\$0.00	\$0.00	\$539.79	\$2,798.06	\$2,928.96	\$0.00	\$0.00	\$0.00	\$0.00	\$0.00	\$0.00	\$0.00	\$0.00	\$0.00	\$0.00	\$0.00	\$0.00	\$6,246.81
Weight (1 Gall)	10.2	10.2	10.2	10.2	10.2	10.2	10.2	10.2	10.2	10.2	10.2	10.2	10.2	10.2	10.2	10.2	10.2	10.2
Water Loss (cc)		48				64	54	62										

GENERAL INFORMATION:

Formation: Arbuckle
 Deviated: No Whipstock: ft (KB)
 Time Tool Opened: 05:38:21
 Time Test Ended: 07:56:36

Interval: 3869.00 ft (KB) To 3892.00 ft (KB) (TVD)
 Total Depth: 3895.00 ft (KB) (TVD)
 Hole Diameter: 7.88 inches-Hole Condition: Good

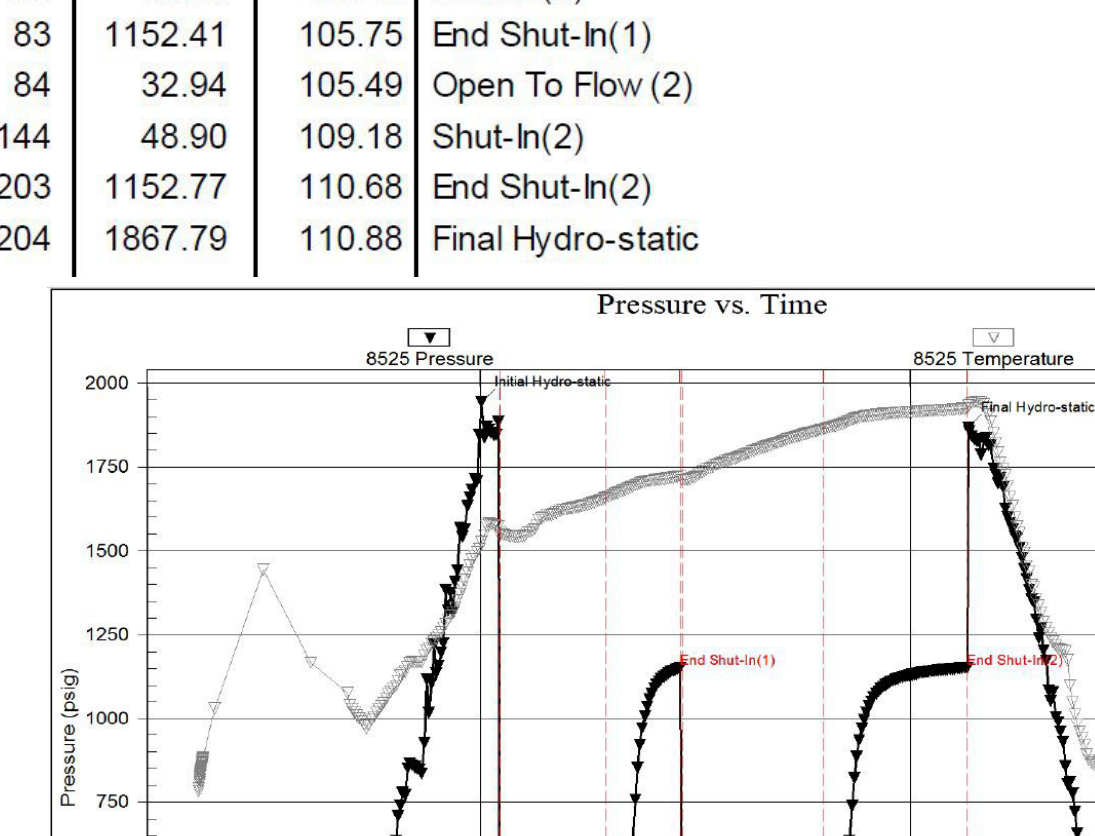
Reference Elevations: 2156.00 ft (KB)
 2148.00 ft (CF)
 KB to GR/CF: 8.00 ft

Serial #: 8525 Inside
 Press@RunDepth: psig @ 3870.00 ft (KB)
 Start Date: 2016.10.17
 Start Time: 03:56:37

Capacity: 8000.00 psig
 Last Calib.: 2016.10.17
 Time On Btm: 2016.10.17 @ 05:32:51
 Time Off Btm: 2016.10.17 @ 06:08:51

TEST COMMENT: IF: Weak Surface Blow, Dead @ 15 minutes, Pulled Tool

Time (Min.)	Pressure (psig)	Temp (deg F)	Annotation	Recovery		
				Length (ft)	Description	Volume (bbl)
0	2007.72	107.16	Initial Hydro-static	1.00	Mud	0.01
6	17.48	106.56	Open To Flow (1)			
36	1883.51	108.79	Final Hydro-static			



GENERAL INFORMATION:

Formation: Arbuckle
 Deviated: No Whipstock: ft (KB)
 Time Tool Opened: 15:07:57
 Time Test Ended: 20:12:12

Interval: 3867.00 ft (KB) To 3895.00 ft (KB) (TVD)
 Total Depth: 3895.00 ft (KB) (TVD)
 Hole Diameter: 7.88 inches-Hole Condition: Good

Reference Elevations: 2156.00 ft (KB)
 2148.00 ft (CF)
 KB to GR/CF: 8.00 ft

Serial #: 8525 Inside
 Press@RunDepth: 48.90 psig @ 3868.00 ft (KB)
 Start Date: 2016.10.17
 Start Time: 13:02:13

Capacity: 8000.00 psig
 Last Calib.: 2016.10.17
 Time On Btm: 2016.10.17 @ 15:00:27
 Time Off Btm: 2016.10.17 @ 18:24:12

TEST COMMENT: IF: Weak 1/4 inch Blow
 IS: No Blow Back
 FF: Weak 1/4 inch Blow
 FS: No Blow Back

Time (Min.)	Pressure (psig)	Temp (deg F)	Annotation	Recovery		
				Length (ft)	Description	Volume (bbl)
0	1943.42	100.98	Initial Hydro-static	6.00	OCM 30% O 70% M	0.84
8	21.06	101.42	Open To Flow (1)	5.00	Oil	0.07
52	33.48	104.18	Shut-In(1)			
83	1152.41	105.75	End Shut-In(1)			
84	32.94	105.49	Open To Flow (2)			
144	48.90	109.18	Shut-In(2)			
203	1152.77	110.68	End Shut-In(2)			
204	1867.79	110.88	Final Hydro-static			

