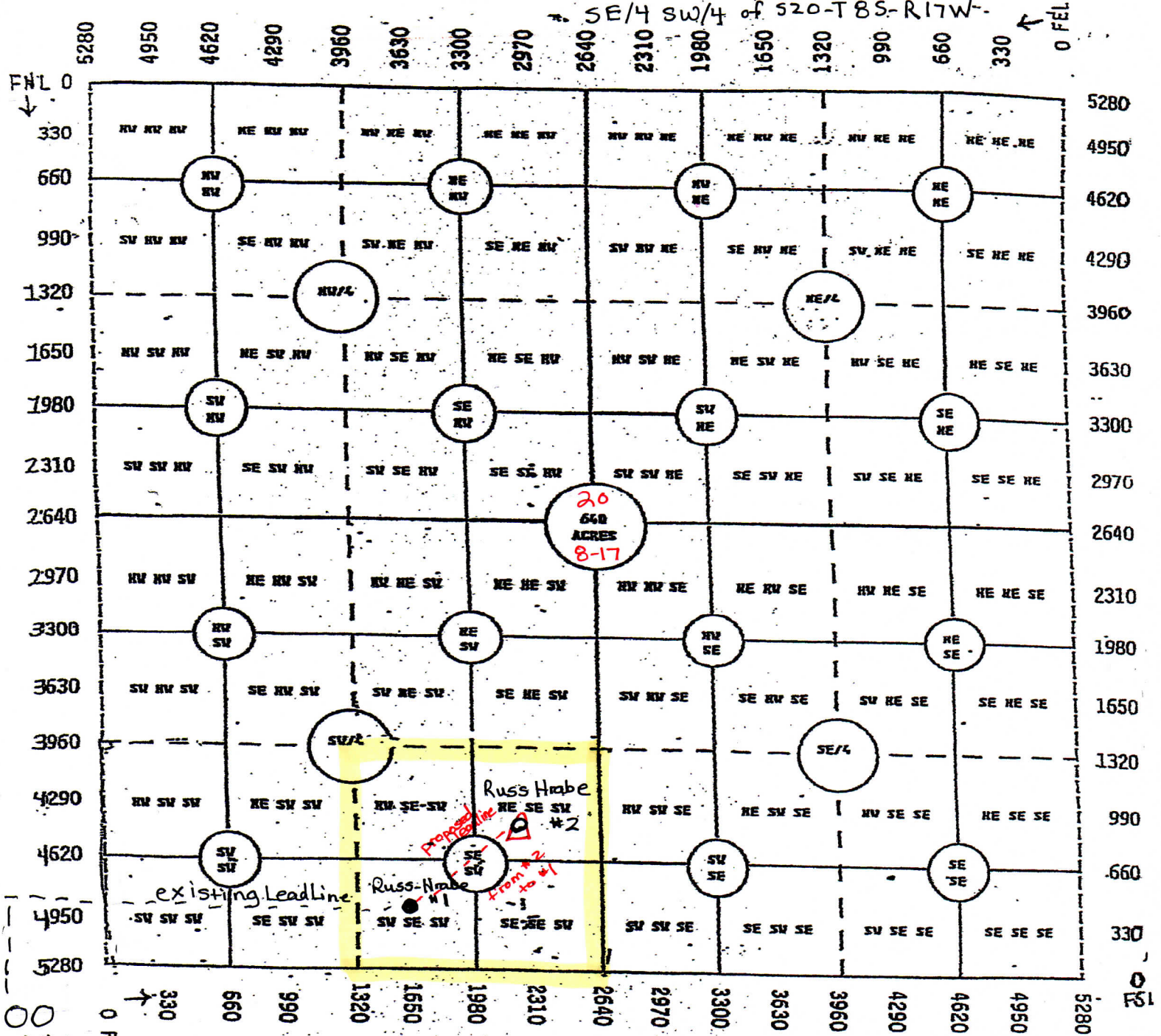


# James P. Williams Enterprises, Inc.

Rooks County, Kansas

## Russ-Hrabe Lease

SE/4 SW/4 of 520-T85-R17W-



If production pipe is set on #2  
 a leadline from the well to existing #1 well,  
 will be laid & tied into existing leadline  
 on #1 well, then to existing Tank Battery.