

GEOLOGIST'S REPORT

DRILLING TIME AND SAMPLE LOG

SUEMAUR EXPLORATION & PROD. , LLC

CAMPBELL #1-35
 SEC. 35 TWP 6S RGE 28W
 SW NE NE NW
 464 FNL & 2124 FWL
 SHERIDAN COUNTY, KANSAS
 API: 15-179-21427-00-00

ELEVATION
 KB: 2736
 GL: 2731
LOG MEASURED FROM: KB

SURFACE CASING
 24# 8 5/8" Set @288' w/ 280SX

PRODUCTION CASING
 15.5#5 1/2" Set @4200'
 DV collar @2474'

DRILLING CONTR.: MURFIN RIG #7
SPUD: 01-09-17 COMP: 01-17-17
MUD UP: 3050' TYPE MUD: CHEM.
DRILL TIME: 3300' to RTD
RTD: 4200' LTD: 4198'
SAMPLES SAVED: 3350' to RTD
GEOLOGIST: ROBERT J. PETERSEN

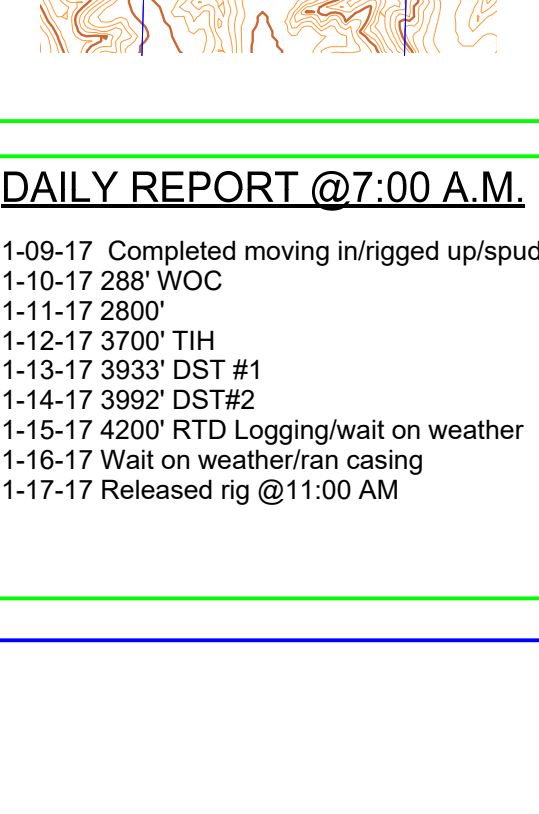
WELL LOG SURVEYS

WEATHERFORD
 Hi-Res ALL-DNL-ML-GR-SP

ELECTRIC LOG TOPS

Formation	Log Top	Datum	Ref. A	Ref. B
Stone Corral	2486	+270	+1	+2
Base Stone Corral	2499	+237	0	+4
Foraker	3359	-623	-2	-2
Stotler	3526	-790	-2	0
Howard	3604	-868	-4	-1
Topeka	3653	-917	-5	-2
Oread	3810	-1074	-2	-1
Heebner	3853	-1117	-3	-3
Toronto	3880	-1144	-4	-2
Lansing	3898	-1162	-6	-3
C Zone	3926	-1190	-3	-2
G Zone	3980	-1244	-6	-5
Muncie Cr.	4005	-1269	-4	-6
H Zone	4019	-1283	-7	-8
Stark	4061	-1325	-5	-4
BKC	4106	-1370	-7	-6
Pawnee	NR	N/A	N/A	N/A
Miss	NR	N/A	N/A	N/A
LTD	4198	N/A	N/A	N/A

LOCATION MAP



REFERENCE WELL A:

API 15-179-21414-00-00
 Suemaur Exploration & Prod. Co
 Schroeder #1
 365' FSL & 2246' FEL
 26-6-28W
 Sheridan County, KS

REFERENCE WELL B:

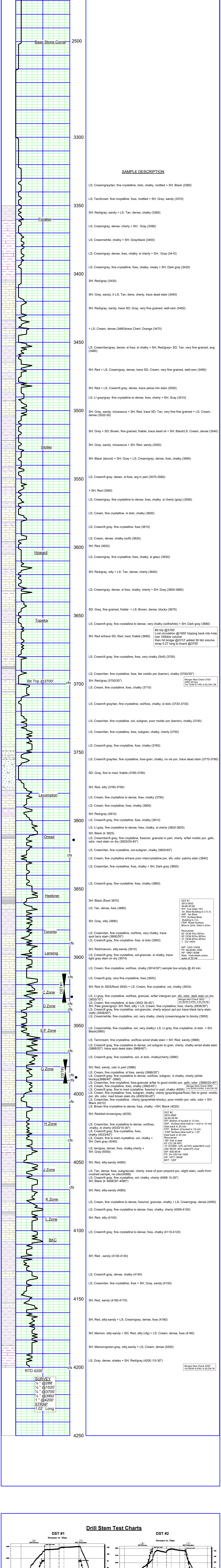
API 15-179-21419-00-00
 Suemaur Exploration & Prod. Co
 Shawn Spresser Trust #1-26
 578' FSL & 1837' FWL
 26-6-28W
 Sheridan County, KS

DAILY REPORT @7:00 A.M.

1-09-17 Completed moving in/rigged up/spud
 1-10-17 288' WOC
 1-11-17 2800'
 1-12-17 3700' TIH
 1-13-17 3933' DST #1
 1-14-17 3992' DST #2
 1-15-17 4200' RTD Logging/wait on weather
 1-16-17 Wait on weather/run casing
 1-17-17 Released rig @11:00 AM

REMARKS AND RECOMMENDATIONS

The operator ran production casing to further test this well for commercial production.



SAMPLE DESCRIPTION

LS: Cream/gray/tan, fine crystalline, dolo, chalky, mottled + SH; Black (3360)

LS: Tan/brown, fine crystalline, foss, mottled + SH; Gray, sandy (3370)

SH: Red/gray, sandy + LS: Tan, dense, chalky (3380)

LS: Cream/gray, dense, cherty + SH; Gray (3390)

LS: Cream/white, chalky + SH; Gray/black (3400)

LS: Cream/gray, dense, foss, chalky, sl cherty + SH; Gray (3410)

LS: Cream/gray, fine crystalline, foss, chalky, mealy + SH; Dark gray (3420)

SH: Red/gray (3430)

SH: Gray, sandy, tr LS: Tan, dene, cherty, trace dead stain (3440)

SH: Red/gray, sandy, trace SD; Gray, very fine grained, well-cem (3450)

+ LS: Cream, dense (3460)/trace Chert; Orange (3470)

LS: Cream/tan/gray, dense, sl foss, sl chalky + SH; Red/gray+ SD; Tan, very fine grained, ang (3480)

SH: Red + LS: Cream/gray, dense, trace SD; Cream, very fine grained, well-cem (3490)

SH: Red + LS: Cream/lt gray, dense, trace yellow min stain (3500)

LS: Lt gray/gray, fine crystalline to dense, foss, cherty + SH; Gray (3510)

SH: Gray, sandy, micaceous + SH; Red, trace SD; Tan, very fine fine grained + LS: Cream, dense (3520-30)

SH: Gray + SD; Brown, fine grained, fraible, trace dead oil + SH; Black/LS: Cream, dense (3540)

SH: Gray, sandy, micaceous + SH; Red, sandy (3550)

SH: Black (abund) + SH; Gray + LS: Cream/gray, dense, foss, chalky (3560)

LS: Cream/lt gray, desen, sl foss, arg in part (3570-3580)

+ SH; Red (3580)

LS: Cream/gray, fine crystalline to dense, foss, chalky, sl cherty (gray) (3590)

LS: Cream, fine crystalline, sl dolo, chalky (3600)

LS: Cream/lt gray, fine crystalline, foss (3610)

LS: Cream, dense, chalky (soft) (3620)

SH: Red (3620)

LS: Cream/gray, fine crystalline, foss, chalky, sl glauc (3630)

SH: Red/gray, silty + LS: Tan, dense, cherty (3640)

LS: Cream/gray, dense, sl foss, chalky, cherty + SH; Gray (3650-3660)

SD: Gray, fine grained, friable + LS: Brown, dense, blocky (3670)

LS: Cream/lt gray, fine crystalline to dense, very chalky (soft/white) + SH; Dark gray (3680)

SH: Red w/trace SD; Red, med, friable (3690)

LS: Cream/lt gray, fine crystalline, foss, very chalky (Soft) (3700)

SH: Cream/tan, fine crystalline, foss, fair moldic por (barren), chalky (3700/30')

SH: Red/gray (3700/30')

LS: Cream, fine crystalline, foss, chalky (3710)

LS: Cream/lt gray/tan, fine crystalline, ool/foss, chalky, sl dolo (3720-3730)

LS: Cream/tan, fine crystalline, ool, subgran, poor moldic por (barren), chalky (3740)

LS: Cream/tan, fine crystalline, foss, subgran, chalky, cherty (3750)

LS: Cream/lt gray, fine crsyalline, foss, chalky (3760)

SD: Gray, fine to med, friable (3780-3790)

SH: Red, silty (3780-3790)

LS: Cream, fine crystalline to dense, foss, chalky (3790)

LS: Cream, fine crystalline, foss, chalky (3800)

SH: Red/gray (3810)

LS: Cream/lt gray, fine crystalline, foss, chalky (3810)

LS: Lt gray, fine crystalline to dense, foss, chalky, sl cherty (3820-3825)

SH: Black (tr 3825)

LS: Cream/tan/lt gray, fine crystalline, foss/ool, granular in part, cherty w/fair moldic por, gsfo, odor, med stain on dry (3825/20-40')

LS: Cream/tan, fine crystalline, ool-subgran, chalky (3825/40')

LS: Cream, fine crystalline w/trace poor intercrystalline por, sfo, odor, patchy stain (3840)

LS: Cream/tan, fine crystalline, foss, chalky + SH; Dark gray (3850)

LS: Cream/lt gray, fine crystalline, foss, chalky (3860)

SH: Black (flood 3870)

LS: Tan, dense, foss (3880)

SH: Gray, silty (3890)

LS: Cream/tan, fine crystalline, ool/foss, very chalky, trace spot larry stain (3890/20')

LS: Cream/lt gray, fine crystalline, foss, sl dolo (3900)

SH: Red/maroon, silty-sandy (3910)

LS: Cream/lt gray, fine crystalline, ool-granular, sl chalky, trace light gray stain on dry (3914)

LS: Cream, fine crystalline, ool/foss, chalky (3914/30') sample box empty @ 45 min

LS: Cream/lt gray, fine crystalline, foss (3925)

SH: Red (tr 3925/flood 3930) + LS: Cream, fine crystalline, ool, chalky (3933)

LS: Lt gray, fine crystalline, ool/foss, granular, w/fair intergran por, sfo, odor, dark stain on dry (3933/15')

LS: Cream, fine crystalline, sl dolo (3933 30-45')

LS: Cream, fine crystalline, foss, chalky (3992/45')

SH: Pale green/gray + SH; Red, silty + LS: Cream; fine crystalline, foss, cherty (3838/30')

LS: Cream/lt gray, fine to med crystalline, foss/ool in part, cherty w/poor ppt por, trace black larry stain, vshf (3938/45')

LS: Cream/white, fine crystalline, ool, very chalky, cherty (cream/angular to blocky (3950)

LS: Cream/white, fine crystalline, ool, very chalky+ LS: Lt gray, fine crystalline, sl dolo + SH; Black(3960)

LS: Tan/cream, fine crystalline, ool/foss w/red shale stain + SH; Red, sandy (3968)

LS: Cream/lt gray, fine crystalline to dense, ool subgran to gran, cherty, chalky w/red shale stain (3968/20') trace spot dead stain 3968/40')

LS: Cream/lt gray, fine crystalline, ool, sl dolo, chalky/cherty (3980)

SH: Red, sandy, calc in part (3986)

LS: Cream, fine crystalline, sl foss, sandy (3986/20')

LS: Cream/lt gray, fine crystalline to dense, ool/foss, subgran, cl chalky, cherty (white blocky)(3986/40' -3990)

LS: Cream/tan, fine crystalline, foss-granular w/fair to good moldic por, gsfo, odor (3990/20-40')

LS: Cream, fine crystalline, foss, chalky (3992/45')

LS: Cream/lt gray, fine to med crystalline, foss/ool in part, chalky (4005) (Viss 50'W 9.0'W 5.6'CM 8#)

LS: Cream, fine crystalline, foss, subgran, chalky, cherty (gray/angular/foss) fair to good moldic por, sfo, odor, med brown stain dry (4005/30-45')

LS: Cream/tan, fine crystalline, cherty (gray/white-blocky), poor moldic por, sfo, odor + SH; Black (4010)

LS: Brown fine crystalline to dense, foss, chalky + SH; Black (4020)

SH: Reddish-brown/gray (4030)

LS: Cream/tan, fine crystalline to dense, ool/foss, chalky, sl cherty (4033/15-30')

LS: Cream/lt gray, fine crystalline, foss, chalky (4033/45')

LS: Cream, fine to med crystalline, ool, chalky + SH; Dark gray (4040)

LS: tan/gray, dense, foss, chalky, cherty + SH; Gray (4050)

SH: Red, silty-sandy (4060)

LS: Tan, dense, foss, subgranular, cherty, trace of poor pinpoint por, slight stain, vshf from crushed sample, no odor(4068)

LS: Cream/lt gray, fine crystalline, ool, chalky, cherty (4068 15-30')

SH: Black (tr 4068/30'-4080')

SH: Red, silty-sandy (4080)

LS: Cream, fine crystalline to dense, foss/ool, granular, chalky + LS: Cream/gray, dense (4090)

LS: Cream/lt gray, fine crystalline to dense, foss, chalky, cherty (4095-4100)

SH: Red, silty (4100)

LS: Cream/lt gray, fine crystalline to dense, foss, chalky (4110-4120)

SH: Red, sandy (4130-4140)

LS: Cream/lt gray, dense, chalky (4140)

LS: Cream/tan, fine crystalline, foss + SH; Gray, sandy (4150)

SH: Red, sandy (4160-4170)

SH: Red, silty-sandy + LS: Cream/gray, dense, foss (4180)

SH: Maroon, silty-sandy + SD; Red, silty (vlg) + LS: Cream, dense, foss (4190)

SH: Maroon/green-gray, silty,sandy + LS: Cream, dense (4200)

LS: Gray, dense, shaley + SH; Red/gray (4200 /15-30')

Bit Trip @3700'
 Lost circulation @1950' tripping back into hole lost 100bbbls volume then hit bridge @2312' added 50 bbl volume strap 0.27 long to board @3700'

Morgan Mud Check 3700'
 (after bit trip)
 Viss 50'W 9.0'W 5.6'CM 8#

DST #1
 3912-3933
 30-60-30-99
 FFP: Tool Slide 10' L
 1in. Blow Building to 3 1/2 in.
 ISIP: No Blow
 FFP: Surface Blow Building to 3 in.
 FSIP: Weak Surface Blow in 3min. Died in 5min.
 Recovered:
 62' OCM 8% to 96%
 93' OCM 20% to 80%
 31' OCM 40% to 60%
 1' CO 100%

DST #2
 3975-3992
 30-60-30-90
 FFP: Bottom of bucket in 12 min
 ISIP: Surface blow built to 1 inch in 12 min. Died back in 20 min.
 FFP: Bottom of bucket in 15 min.
 FSIP: Surface blow built to 1.25' (Died back in 20 min)
 Recovered:
 180' Gas in pipe
 83' CO (38 API)
 10' OCW/M - 10% oil/10% water/80% mud
 249' MCW - 95% water/5% mud
 SIP: 850-851#
 FFP: 25'-120'124-165#
 HP: 1977-1943#
 BHT: 120F

Morgan Mud Check 4200'
 Viss 50'W 9.0'W 5.6'CM 8#

Drill Stem Test Charts

