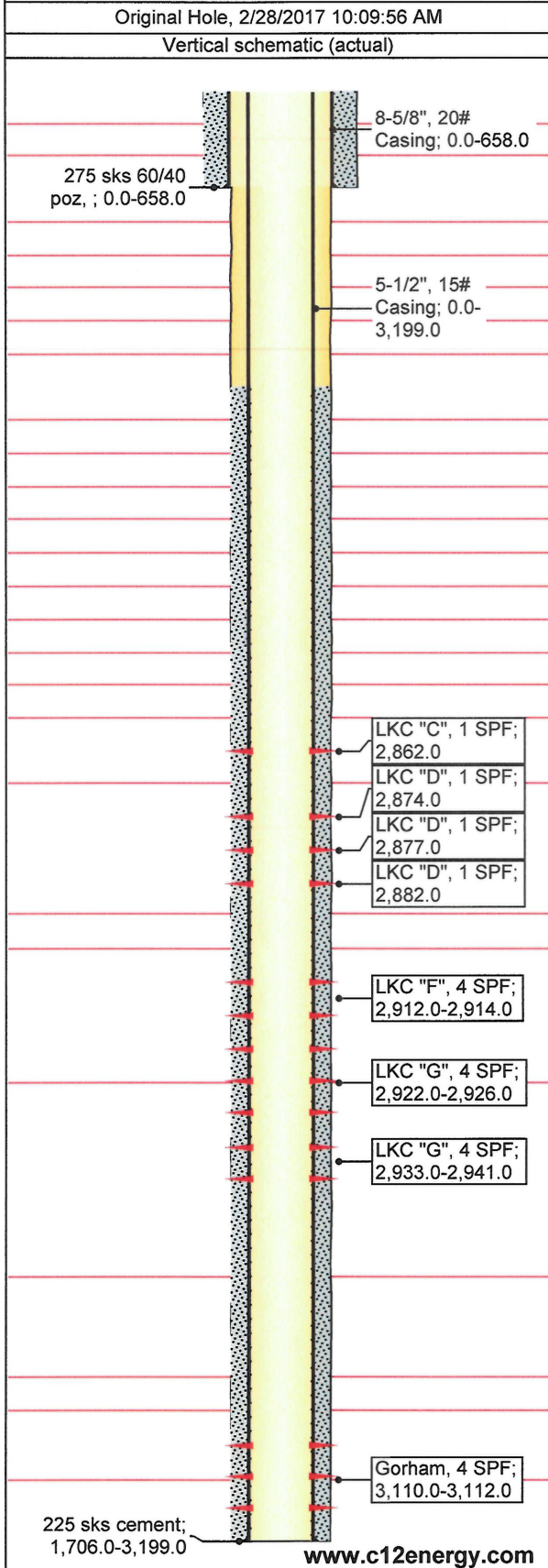


API/UWI 15-167-22908	Operator C12: Kansas Oil, LLC	Well Status Pumping Oil	License #
Rig Release Date 6/30/1990	Surface Legal Location 14S 13W Sec 31 C E2 NW	Latitude (°) 38° 47' 41.342" N	Longitude (°) 98° 48' 37.135" W
Abandon Date 1/1/1900	Original KB Elevation (ft) 1,711.00	Total Depth (ftKB) 3,199.0	PBTD (All) (ftKB)

Comment



Fluid Level Tests

Date 5/28/2015	Fluid Level (ftKB) 776.0
-------------------	-----------------------------

Rod Pump Details

Current Stroke Length (in) 12 1/4	Strokes Per Minute (spm) 0.0
--------------------------------------	---------------------------------

Wellbore Sections

Section Description	Size (in)	Actual Top Depth (ftKB)	Actual Btm Depth (ftKB)
8-5/8", 20# Casing	12 1/4	0.0	658.0
5-1/2", 15# Casing	7 7/8	658.0	3,199.0

Casing Components

Item Description	ID (in)	Grade	Joints	Length (ft)	Btm (ftKB)
8-5/8", 20# Casing	8.097	J-55	15	658.00	658.0
5-1/2", 15# Casing	5.012	J-55	78	3,199.04	3,199.0

Tubing Components

Item Description	OD (in)	Wt (lb/ft)	Grade	Joints	Length (ft)	Btm (ftKB)
------------------	---------	------------	-------	--------	-------------	------------

Rod Components

Item Description	OD (in)	Wt (lb/ft)	Grade	Joints	Length (ft)	Btm (ftKB)
------------------	---------	------------	-------	--------	-------------	------------

Stimulations & Treatments

Date 6/27/1990	Type 4000 gal 28% acid	Min Top Depth (ftKB) 2,862.0	Max Btm Depth (ftKB) 2,874.0
Max Treat Pressure (psi)	Avg Treat Pressure (psi)	Max Treat Rate (gpm)	Avg Treat Rate (gpm)

Stim/Treat Fluid

Date 6/22/1990	Type 6000 gal 28% acid	Min Top Depth (ftKB) 2,913.0	Max Btm Depth (ftKB) 2,939.0
Max Treat Pressure (psi)	Avg Treat Pressure (psi)	Max Treat Rate (gpm)	Avg Treat Rate (gpm)

Stim/Treat Fluid

Date 6/21/1990	Type 2500 gal 28% acid	Min Top Depth (ftKB) 2,924.0	Max Btm Depth (ftKB) 2,941.0
Max Treat Pressure (psi)	Avg Treat Pressure (psi)	Max Treat Rate (gpm)	Avg Treat Rate (gpm)

Stim/Treat Fluid