

Operator **Downing-Nelson Oil Co., Inc.**
Lease **Fabrizous-Younger "B"** No. **1-35**
API # **15-195-23014-0000**
Field **Fab**
Location **260' FSL & 2285' FWL**
Sec. **35** Twp. **13s** Rge. **22w**
County **Trego** State **Kansas**

Elevation **2341**
KB **2339**
DF **2333**
GL
Casing Record
Surface **8 5/8" @ 220'**
Production **5 1/2" @ 4357'**
Electrical Surveys
CNDL, DIL, MEL, Sonic

Formation	Sample tops	Log Tops	Datum	Struct Comp
Top Anhydrite	NA	1756	+585	+4
Base Anhydrite	1798	1798	+543	+5
Topeka	3455	3457	-1116	-4
Heebner	3691	3694	-1353	-7
Toronto	3710	3712	-1371	-8
LKC	3724	3728	-1387	-9
BKC	3972	3975	-1634	-6
Marmaton	4073	4076	-1735	-7
Cherokee Sh.	4122	4125	-1784	-6
Conglomerate Sand	4168	4171	-1830	-4
Mississippi	4216	4219	-1878	+16
Arbuckle	4287	4290	-1949	-6
Total Depth	4351	4358	-2017	

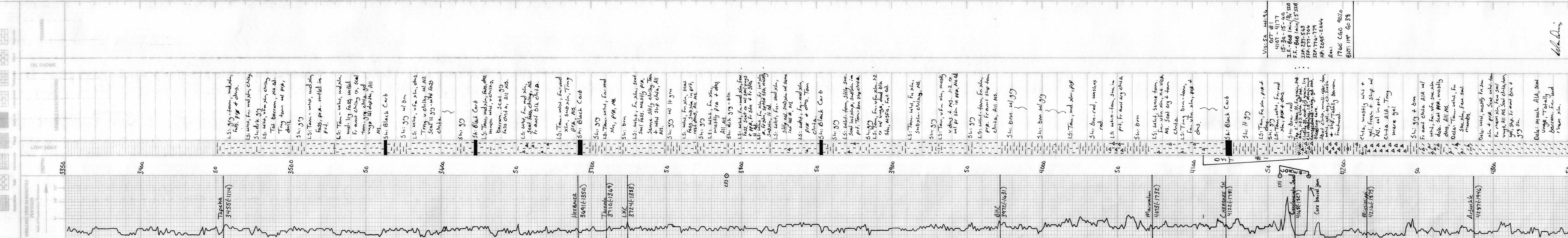
Drilling Contractor	Commenced	Completed	Discovery Drilling, Rig #2
Marc A. Downing	1-23-17		1-30-17
Samples Saved From	3450	To	RTD
Drilling Time Kept From	3350	To	RTD
Samples Examined From	3450	To	RTD
Geological Supervision From	3450	To	RTD

Summary and Recommendations

Due to structural position, DST recovery, and log evaluation, it was decided to set 5 1/2" production casing for completion.

Respectfully Submitted,

Marc A. Downing



M.A. Downing

Vis: 50
DST #1
4187 - 4177
15-30-15-40
I.F. - 060 1 min / 1.5 518
I.F.P. 237-543
I.F. 577-704
SIF: 776-779
AP: 2095-2044
Rec:
1700 CGO 90%
BHT: 119 G=38