



TEMPORARY ABANDONMENT WELL APPLICATION

OPERATOR: License# _____
 Name: _____
 Address 1: _____
 Address 2: _____
 City: _____ State: _____ Zip: _____ + _____
 Contact Person: _____
 Phone: (_____) _____
 Contact Person Email: _____
 Field Contact Person: _____
 Field Contact Person Phone: (_____) _____

API No. 15- _____
 Spot Description: _____
 _____ - _____ - _____ - _____ Sec. _____ Twp. _____ S. R. _____ E W
 _____ feet from N / S Line of Section
 _____ feet from E / W Line of Section
 GPS Location: Lat: _____, Long: _____
(e.g. xx.xxxxx) (e.g. -xxx.xxxxx)
 Datum: NAD27 NAD83 WGS84
 County: _____ Elevation: _____ GL KB
 Lease Name: _____ Well #: _____
 Well Type: (check one) Oil Gas OG WSW Other: _____
 SWD Permit #: _____ ENHR Permit #: _____
 Gas Storage Permit #: _____
 Spud Date: _____ Date Shut-In: _____

	Conductor	Surface	Production	Intermediate	Liner	Tubing
Size						
Setting Depth						
Amount of Cement						
Top of Cement						
Bottom of Cement						

Casing Fluid Level from Surface: _____ How Determined? _____ Date: _____
 Casing Squeeze(s): _____ to _____ w / _____ sacks of cement, _____ to _____ w / _____ sacks of cement. Date: _____
(top) (bottom) (top) (bottom)
 Do you have a valid Oil & Gas Lease? Yes No
 Depth and Type: Junk in Hole at _____ Tools in Hole at _____ Casing Leaks: Yes No Depth of casing leak(s): _____
(depth) (depth)
 Type Completion: ALT. I ALT. II Depth of: DV Tool: _____ w / _____ sacks of cement Port Collar: _____ w / _____ sack of cement
(depth) (depth)
 Packer Type: _____ Size: _____ Inch Set at: _____ Feet
 Total Depth: _____ Plug Back Depth: _____ Plug Back Method: _____

Geological Data:

Formation Name	Formation Top	Formation Base	Completion Information
1. _____	At: _____	to _____ Feet	Perforation Interval _____ to _____ Feet or Open Hole Interval _____ to _____ Feet
2. _____	At: _____	to _____ Feet	Perforation Interval _____ to _____ Feet or Open Hole Interval _____ to _____ Feet

UNDER PENALTY OF PERJURY I HEREBY ATTEST THAT THE INFORMATION CONTAINED HEREIN IS TRUE AND CORRECT TO THE BEST OF MY KNOWLEDGE

Submitted Electronically

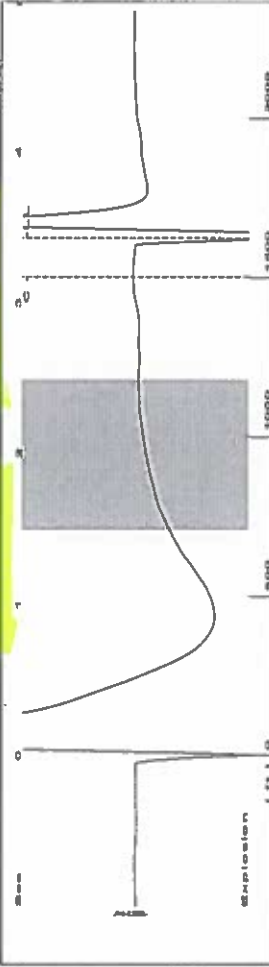
Do NOT Write in This Space - KCC USE ONLY	Date Tested: _____	Results: _____	Date Plugged: _____	Date Repaired: _____	Date Put Back in Service: _____
	Review Completed by: _____ Comments: _____				
TA Approved: <input type="checkbox"/> Yes <input type="checkbox"/> Denied Date: _____					

Mail to the Appropriate KCC Conservation Office:

	KCC District Office #1 - 210 E. Frontview, Suite A, Dodge City, KS 67801	Phone 620.225.8888
	KCC District Office #2 - 3450 N. Rock Road, Building 600, Suite 601, Wichita, KS 67226	Phone 316.337.7400
	KCC District Office #3 - 1500 SW Seventh Steet, Chanute, KS 66720	Phone 620.432.2300
	KCC District Office #4 - 2301 E. 13th Street, Hays, KS 67601-2651	Phone 785.625.0550

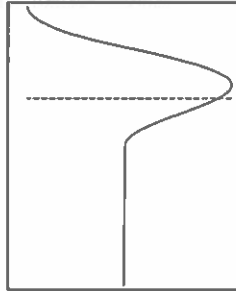
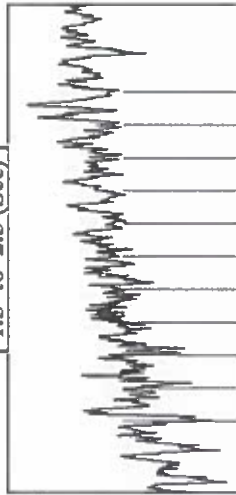
T.R. 0.

Group: route 6 Well: Devore E-2 (acquired on: 02/25/17 15:44:09)

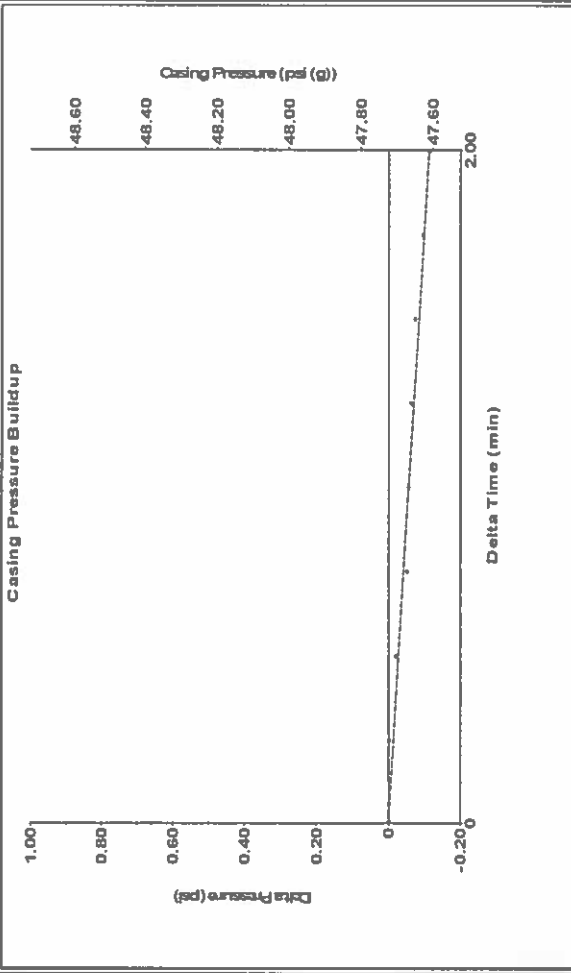


Filter Type High Pass Automatic Collar Count Yes
 Manual Acoustic Veloc 939.259 ft/s Manual JTS/sec 14.8148
 Time 3.43 sec
 Joints 51.2343 Jts
 Depth 1624.13 ft

[1.5 to 2.5 (Sec)]



Group: route 6 Well: Devore E-2 (acquired on: 02/25/17 15:44:09)



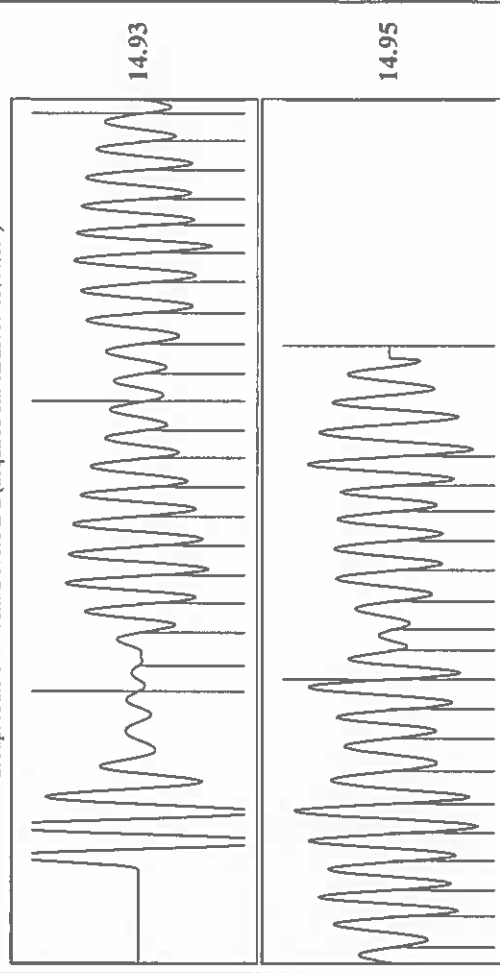
Change in Pressure -0.11 psi PT8746 Range
 Change in Time 2.00 min

Analysis Method: Automatic

Group: route 6 Well: Devore E-2 (acquired on: 02/25/17 15:44:09)

Production	Potential	Casing Pressure	47.7 psi (g)
Oil	-*- BBL/D	Casing Pressure Buildup	-0.113 psi
Water	-*- BBL/D	Gas/Liquid Interface Pressure	51.4 psi (g)
Gas	-*- Mscf/D	Liquid Level Depth	1624.13 ft
IPR Method	Vogel	Tubing Intake Depth	5297.00 ft
PBHP/SBHP	-*-	Formation Depth	5350.00 ft
Production Efficiency	0.0	Acoustic Velocity	947.013 ft/s
Oil	40 deg.API	Formation Submergence	
Water	1.05 Sp.Gr.H2O	Total Gaseous Liquid Column HT (TVD)	3726 ft
Gas	1.00 Sp.Gr.AIR	Equivalent Gas Free Liquid HT (TVD)	3726 ft
Acoustic Velocity	947.013 ft/s	Acoustic Test	
Producing	Annular Gas Flow 0 Mscf/D	% Liquid	100 %
Tubing Intake	1721.3 psi (g)	Producing BHP	1745.4 psi (g)
Producing BHP	1745.4 psi (g)	Static BHP	1483.1 psi (g)
Acoustic Velocity	947.013 ft/s	Joints counted	38
Joints Per Second	14.9371 jts/sec	Joints to liquid level	51.2343
Depth to liquid level	1624.13 ft	Filter Width	12.8148
Automatic Collar Count	Yes	Time to 1st Collar	0.628
			3.172

Group: route 6 Well: Devore E-2 (acquired on: 02/25/17 15:44:09)



Acoustic Velocity 947.013 ft/s Joints counted 38
 Joints Per Second 14.9371 jts/sec Joints to liquid level 51.2343
 Depth to liquid level 1624.13 ft Filter Width 12.8148
 Automatic Collar Count Yes Time to 1st Collar 0.628 3.172

Conservation Division
District Office No. 1
210 E. Frontview, Suite A
Dodge City, KS 67801



Phone: 620-682-7933
<http://kcc.ks.gov/>

Pat Apple, Chairman
Shari Feist Albrecht, Commissioner
Jay Scott Emler, Commissioner

Sam Brownback, Governor

March 07, 2017

Katherine McClurkan
Merit Energy Company, LLC
13727 Noel Road, Suite 1200
Dallas, TX 75240

Re: Temporary Abandonment
API 15-055-22233-00-00
DeVore E 2
SE/4 Sec.27-26S-33W
Finney County, Kansas

Dear Katherine McClurkan:

"Your temporary abandonment (TA) application for the well listed above has been approved. In accordance with K.A.R. 82-3-111 the TA status of this well will expire 03/07/2018.

- * If you return this well to service or plug it, please notify the District Office.
- * If you sell this well you are required to file a Transfer of Operator form, T-1.
- * If the well will remain temporarily abandoned, you must submit a new TA application, CP-111, before 03/07/2018.

You may contact me at the number above if you have questions.

Very truly yours,

Michael Maier"