



**TEMPORARY ABANDONMENT WELL APPLICATION**

All blanks must be complete

OPERATOR: License# \_\_\_\_\_  
Name: \_\_\_\_\_  
Address 1: \_\_\_\_\_  
Address 2: \_\_\_\_\_  
City: \_\_\_\_\_ State: \_\_\_\_\_ Zip: \_\_\_\_\_ + \_\_\_\_\_  
Contact Person: \_\_\_\_\_  
Phone: ( \_\_\_\_\_ ) \_\_\_\_\_  
Contact Person Email: \_\_\_\_\_  
Field Contact Person: \_\_\_\_\_  
Field Contact Person Phone: ( \_\_\_\_\_ ) \_\_\_\_\_

API No. 15- \_\_\_\_\_  
Spot Description: \_\_\_\_\_  
\_\_\_\_ - \_\_\_\_ - \_\_\_\_ - \_\_\_\_ Sec. \_\_\_\_\_ Twp. \_\_\_\_\_ S. R. \_\_\_\_\_  E  W  
\_\_\_\_\_ feet from  N /  S Line of Section  
\_\_\_\_\_ feet from  E /  W Line of Section  
GPS Location: Lat: \_\_\_\_\_, Long: \_\_\_\_\_  
(e.g. xx.xxxxx) (e.g. -xxx.xxxxx)  
Datum:  NAD27  NAD83  WGS84  
County: \_\_\_\_\_ Elevation: \_\_\_\_\_  GL  KB  
Lease Name: \_\_\_\_\_ Well #: \_\_\_\_\_  
Well Type: (check one)  Oil  Gas  OG  WSW  Other: \_\_\_\_\_  
 SWD Permit #: \_\_\_\_\_  ENHR Permit #: \_\_\_\_\_  
 Gas Storage Permit #: \_\_\_\_\_  
Spud Date: \_\_\_\_\_ Date Shut-In: \_\_\_\_\_

	Conductor	Surface	Production	Intermediate	Liner	Tubing
Size						
Setting Depth						
Amount of Cement						
Top of Cement						
Bottom of Cement						

Casing Fluid Level from Surface: \_\_\_\_\_ How Determined? \_\_\_\_\_ Date: \_\_\_\_\_  
Casing Squeeze(s): \_\_\_\_\_ to \_\_\_\_\_ w / \_\_\_\_\_ sacks of cement, \_\_\_\_\_ to \_\_\_\_\_ w / \_\_\_\_\_ sacks of cement. Date: \_\_\_\_\_  
(top) (bottom) (top) (bottom)  
Do you have a valid Oil & Gas Lease?  Yes  No  
Depth and Type:  Junk in Hole at \_\_\_\_\_  Tools in Hole at \_\_\_\_\_ Casing Leaks:  Yes  No Depth of casing leak(s): \_\_\_\_\_  
(depth) (depth)  
Type Completion:  ALT. I  ALT. II Depth of:  DV Tool: \_\_\_\_\_ w / \_\_\_\_\_ sacks of cement  Port Collar: \_\_\_\_\_ w / \_\_\_\_\_ sack of cement  
(depth) (depth)  
Packer Type: \_\_\_\_\_ Size: \_\_\_\_\_ Inch Set at: \_\_\_\_\_ Feet  
Total Depth: \_\_\_\_\_ Plug Back Depth: \_\_\_\_\_ Plug Back Method: \_\_\_\_\_

**Geological Data:**

Formation Name	Formation Top	Formation Base	Completion Information
1. _____	At: _____	to _____ Feet	Perforation Interval _____ to _____ Feet or Open Hole Interval _____ to _____ Feet
2. _____	At: _____	to _____ Feet	Perforation Interval _____ to _____ Feet or Open Hole Interval _____ to _____ Feet

UNDER PENALTY OF PERJURY I HEREBY ATTEST THAT THE INFORMATION CONTAINED HEREIN IS TRUE AND CORRECT TO THE BEST OF MY KNOWLEDGE

Submitted Electronically

**Do NOT Write in This Space - KCC USE ONLY**

Date Tested: \_\_\_\_\_ Results: \_\_\_\_\_ Date Plugged: \_\_\_\_\_ Date Repaired: \_\_\_\_\_ Date Put Back in Service: \_\_\_\_\_

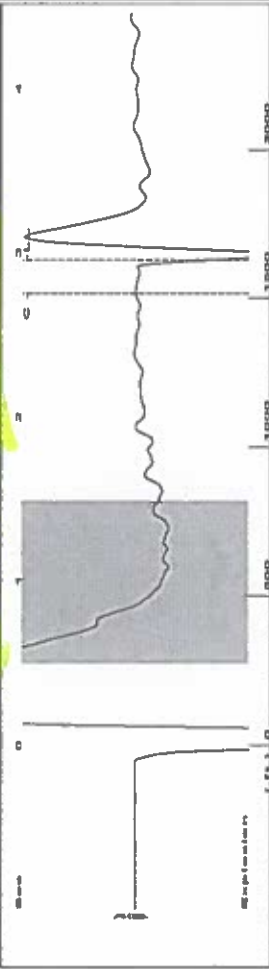
Review Completed by: \_\_\_\_\_ Comments: \_\_\_\_\_

TA Approved:  Yes  Denied Date: \_\_\_\_\_

**Mail to the Appropriate KCC Conservation Office:**

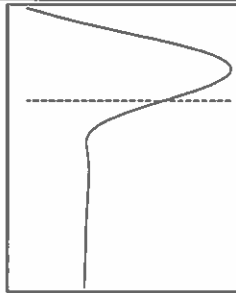
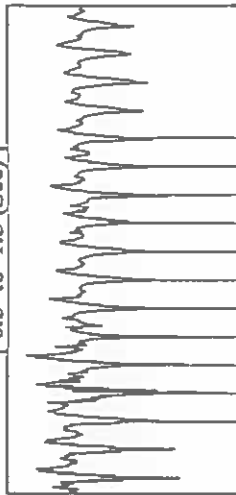
	KCC District Office #1 - 210 E. Frontview, Suite A, Dodge City, KS 67801	Phone 620.225.8888
	KCC District Office #2 - 3450 N. Rock Road, Building 600, Suite 601, Wichita, KS 67226	Phone 316.337.7400
	KCC District Office #3 - 1500 SW Seventh Steet, Chanute, KS 66720	Phone 620.432.2300
	KCC District Office #4 - 2301 E. 13th Street, Hays, KS 67601-2651	Phone 785.625.0550

Group: TAD Well: Irene 1-1632 (acquired on: 02/25/17 14:15:17)

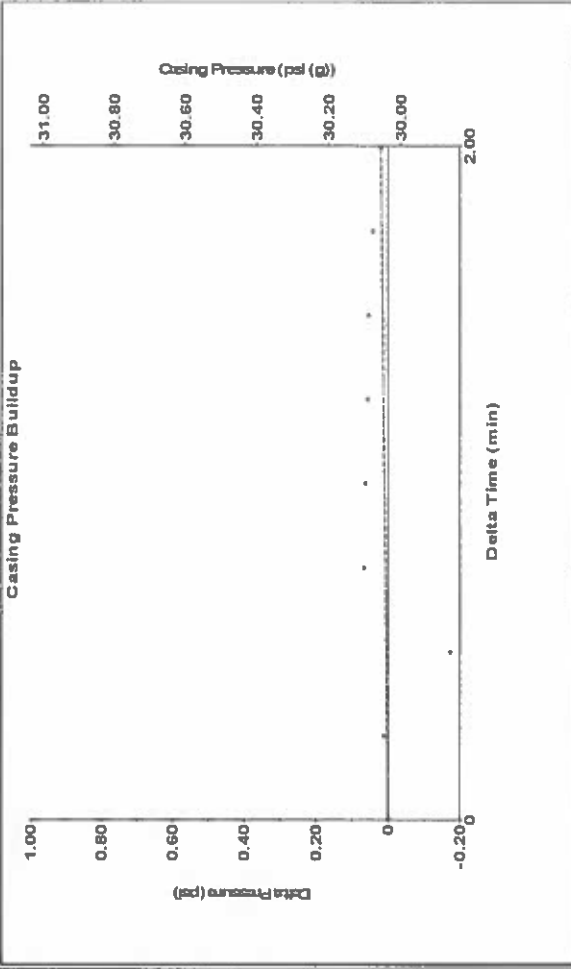


Filter Type High Pass Automatic Collar Count Yes Time 2.953 sec  
 Manual Acoustic Veloc 087.48 ft/s Manual JTS/sec 17.1527 Joints 51.3669 Jts  
 Depth 1628.33 ft

[ 0.5 to 1.5 (Sec) ]



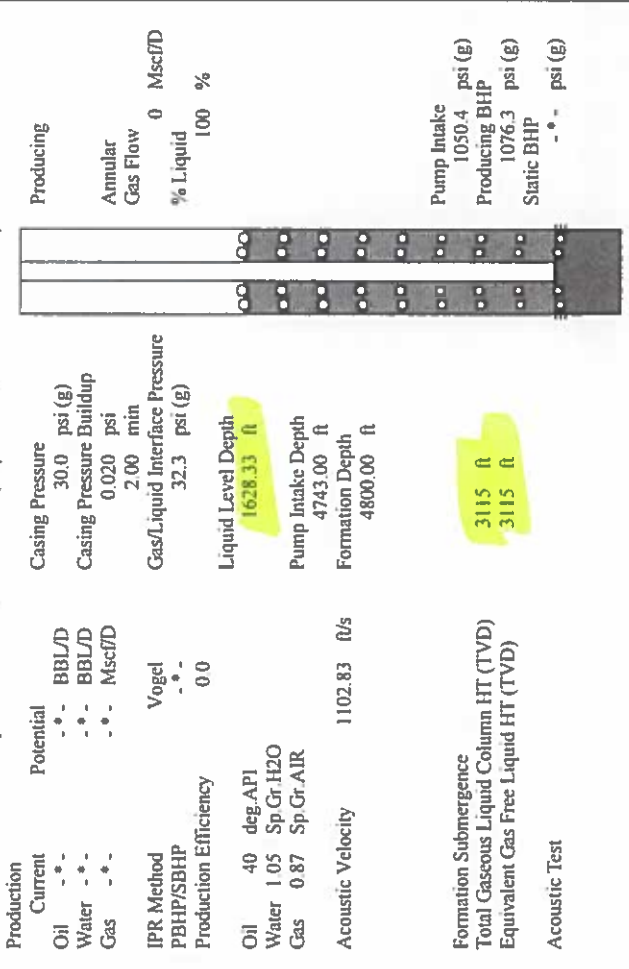
Group: TAD Well: Irene 1-1632 (acquired on: 02/25/17 14:15:17)



Change in Pressure 0.02 psi FT8746 Range  
 Change in Time 2.00 min

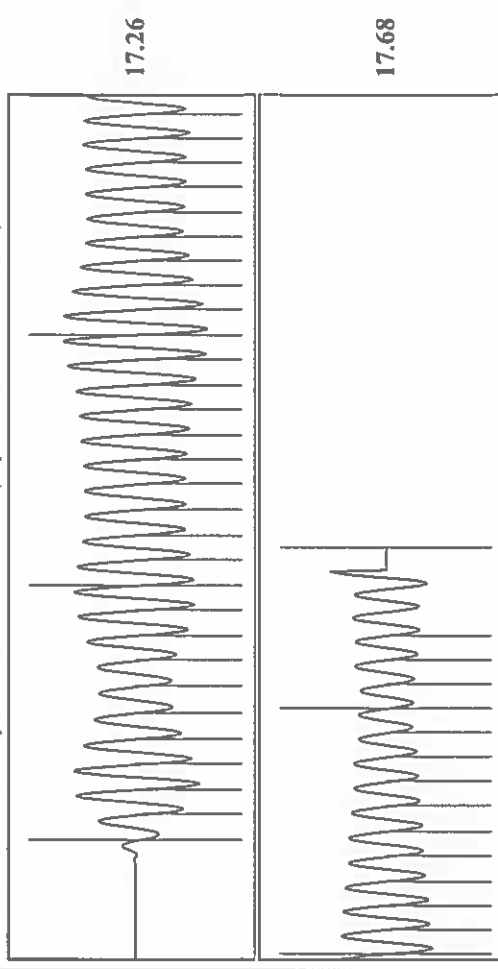
Analysis Method: Automatic

Group: TAD Well: Irene 1-1632 (acquired on: 02/25/17 14:15:17)



Production Current Potential  
 Oil -.- BBL/D Casing Pressure 30.0 psi (g)  
 Water -.- BBL/D Casing Pressure Buildup 0.020 psi  
 Gas -.- Mscf/D Gas/Liquid Interface Pressure 32.3 psi (g)  
 IPR Method Vogel  
 PBHP/SBHP -.-  
 Production Efficiency 0.0  
 Oil 40 deg-API Liquid Level Depth 1628.33 ft  
 Water 1.05 Sp.Gr.H2O Pump Intake Depth 4743.00 ft  
 Gas 0.87 Sp.Gr.AIR Formation Depth 4800.00 ft  
 Acoustic Velocity 1102.83 ft/s  
 Formation Submergence 3115 ft  
 Total Gaseous Liquid Column HT (TVD) 3115 ft  
 Equivalent Gas Free Liquid HT (TVD)  
 Acoustic Test

Group: TAD Well: Irene 1-1632 (acquired on: 02/25/17 14:15:17)



Acoustic Velocity 1102.83 ft/s Joints counted 43  
 Joints Per Second 17.3948 jts/sec Joints to liquid level 51.3669  
 Depth to liquid level 1628.33 ft Filter Width 15.1527  
 Automatic Collar Count Yes Time to 1st Collar 0.276 2.748

March 07, 2017

Katherine McClurkan  
Merit Energy Company, LLC  
13727 Noel Raod, Suite 1200  
Dallas, TX 75240

Re: Temporary Abandonment  
API 15-055-21839-00-00  
Irene 1-1632  
SE/4 Sec.32-23S-32W  
Finney County, Kansas

Dear Katherine McClurkan:

"Your temporary abandonment (TA) application for the well listed above has been approved. In accordance with K.A.R. 82-3-111 the TA status of this well will expire 03/07/2018.

- \* If you return this well to service or plug it, please notify the District Office.
- \* If you sell this well you are required to file a Transfer of Operator form, T-1.
- \* If the well will remain temporarily abandoned, you must submit a new TA application, CP-111, before 03/07/2018.

You may contact me at the number above if you have questions.

Very truly yours,

Michael Maier"