



# TEMPORARY ABANDONMENT WELL APPLICATION

OPERATOR: License# \_\_\_\_\_  
 Name: \_\_\_\_\_  
 Address 1: \_\_\_\_\_  
 Address 2: \_\_\_\_\_  
 City: \_\_\_\_\_ State: \_\_\_\_\_ Zip: \_\_\_\_\_ + \_\_\_\_\_  
 Contact Person: \_\_\_\_\_  
 Phone: ( \_\_\_\_\_ ) \_\_\_\_\_  
 Contact Person Email: \_\_\_\_\_  
 Field Contact Person: \_\_\_\_\_  
 Field Contact Person Phone: ( \_\_\_\_\_ ) \_\_\_\_\_

API No. 15- \_\_\_\_\_  
 Spot Description: \_\_\_\_\_  
 \_\_\_\_\_ - \_\_\_\_\_ - \_\_\_\_\_ - \_\_\_\_\_ Sec. \_\_\_\_\_ Twp. \_\_\_\_\_ S. R. \_\_\_\_\_  E  W  
 \_\_\_\_\_ feet from  N /  S Line of Section  
 \_\_\_\_\_ feet from  E /  W Line of Section  
 GPS Location: Lat: \_\_\_\_\_, Long: \_\_\_\_\_  
(e.g. xx.xxxxx) (e.g. -xxx.xxxxx)  
 Datum:  NAD27  NAD83  WGS84  
 County: \_\_\_\_\_ Elevation: \_\_\_\_\_  GL  KB  
 Lease Name: \_\_\_\_\_ Well #: \_\_\_\_\_  
 Well Type: (check one)  Oil  Gas  OG  WSW  Other: \_\_\_\_\_  
 SWD Permit #: \_\_\_\_\_  ENHR Permit #: \_\_\_\_\_  
 Gas Storage Permit #: \_\_\_\_\_  
 Spud Date: \_\_\_\_\_ Date Shut-In: \_\_\_\_\_

	Conductor	Surface	Production	Intermediate	Liner	Tubing
Size						
Setting Depth						
Amount of Cement						
Top of Cement						
Bottom of Cement						

Casing Fluid Level from Surface: \_\_\_\_\_ How Determined? \_\_\_\_\_ Date: \_\_\_\_\_  
 Casing Squeeze(s): \_\_\_\_\_ to \_\_\_\_\_ w / \_\_\_\_\_ sacks of cement, \_\_\_\_\_ to \_\_\_\_\_ w / \_\_\_\_\_ sacks of cement. Date: \_\_\_\_\_  
(top) (bottom) (top) (bottom)  
 Do you have a valid Oil & Gas Lease?  Yes  No  
 Depth and Type:  Junk in Hole at \_\_\_\_\_  Tools in Hole at \_\_\_\_\_ Casing Leaks:  Yes  No Depth of casing leak(s): \_\_\_\_\_  
(depth) (depth)  
 Type Completion:  ALT. I  ALT. II Depth of:  DV Tool: \_\_\_\_\_ w / \_\_\_\_\_ sacks of cement  Port Collar: \_\_\_\_\_ w / \_\_\_\_\_ sack of cement  
(depth) (depth)  
 Packer Type: \_\_\_\_\_ Size: \_\_\_\_\_ Inch Set at: \_\_\_\_\_ Feet  
 Total Depth: \_\_\_\_\_ Plug Back Depth: \_\_\_\_\_ Plug Back Method: \_\_\_\_\_

**Geological Data:**

Formation Name	Formation Top	Formation Base	Completion Information
1. _____	At: _____	to _____ Feet	Perforation Interval _____ to _____ Feet or Open Hole Interval _____ to _____ Feet
2. _____	At: _____	to _____ Feet	Perforation Interval _____ to _____ Feet or Open Hole Interval _____ to _____ Feet

UNDER PENALTY OF PERJURY I HEREBY ATTEST THAT THE INFORMATION CONTAINED HEREIN IS TRUE AND CORRECT TO THE BEST OF MY KNOWLEDGE

Submitted Electronically

**Do NOT Write in This Space - KCC USE ONLY**

Date Tested: \_\_\_\_\_ Results: \_\_\_\_\_ Date Plugged: \_\_\_\_\_ Date Repaired: \_\_\_\_\_ Date Put Back in Service: \_\_\_\_\_

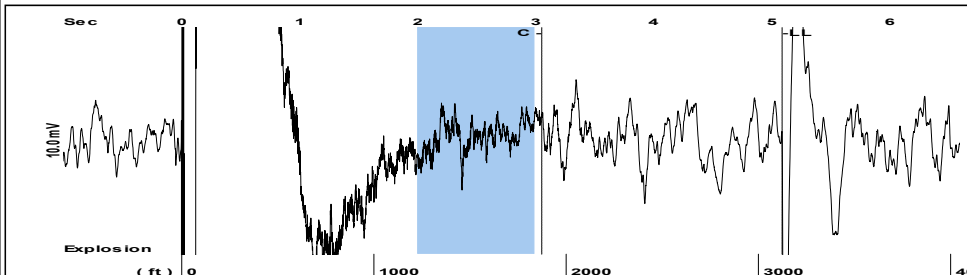
Review Completed by: \_\_\_\_\_ Comments: \_\_\_\_\_

TA Approved:  Yes  Denied Date: \_\_\_\_\_

**Mail to the Appropriate KCC Conservation Office:**

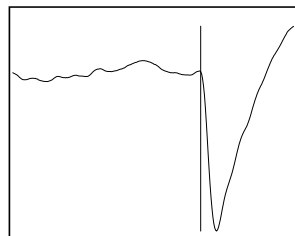
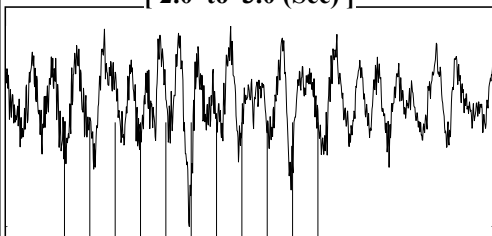
	KCC District Office #1 - 210 E. Frontview, Suite A, Dodge City, KS 67801	Phone 620.225.8888
	KCC District Office #2 - 3450 N. Rock Road, Building 600, Suite 601, Wichita, KS 67226	Phone 316.337.7400
	KCC District Office #3 - 1500 SW Seventh Steet, Chanute, KS 66720	Phone 620.432.2300
	KCC District Office #4 - 2301 E. 13th Street, Hays, KS 67601-2651	Phone 785.625.0550

Group: MyWells Well: Liggett # 1-32 (acquired on: 03/03/17 10:49:16)



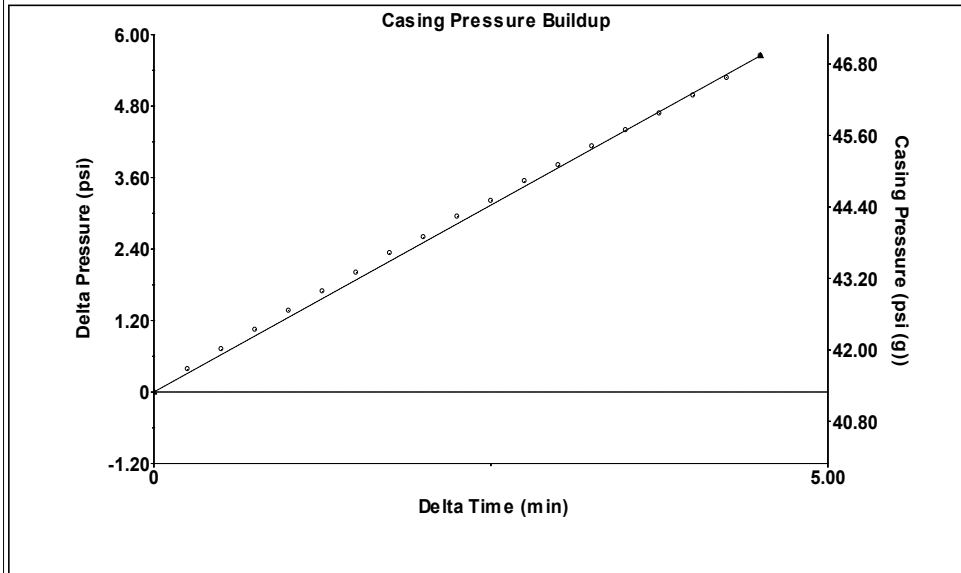
Filter Type High Pass Automatic Collar Count Yes Time 5.089 sec  
 Manual Acoustic Velo 1201.92 ft/s Manual JTS/sec 19.2308 Joints 99.9277 Jts  
 Depth 3122.74 ft

[ 2.0 to 3.0 (Sec) ]



**Analysis Method: Automatic**

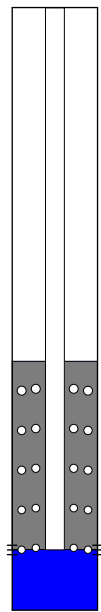
Group: MyWells Well: Liggett # 1-32 (acquired on: 03/03/17 10:49:16)



Change in Pressure 5.65 psi PT12865  
 Change in Time 4.50 min Range 0 - ? psi

Group: MyWells Well: Liggett # 1-32 (acquired on: 03/03/17 10:49:16)

<b>Production</b>	<b>Potential</b>	<b>Casing Pressure</b>
Current	- * - BBL/D	41.3 psi (g)
Oil - * -	- * - BBL/D	Casing Pressure Buildup
Water - * -	- * - Mscf/D	5.6 psi
Gas - * -		4.50 min
		Gas/Liquid Interface Pressure
		46.0 psi (g)
<b>IPR Method</b>	<b>Vogel</b>	<b>Liquid Level Depth</b>
PBHP/SBHP	- * -	3122.74 ft
Production Efficiency	0.0	<b>Pump Intake Depth</b>
		5130.00 ft
		<b>Formation Depth</b>
		5130.00 ft



**Producing**

Annular Gas Flow 32 Mscf/D  
 % Liquid 28 %

**Pump Intake**  
 237.1 psi (g)

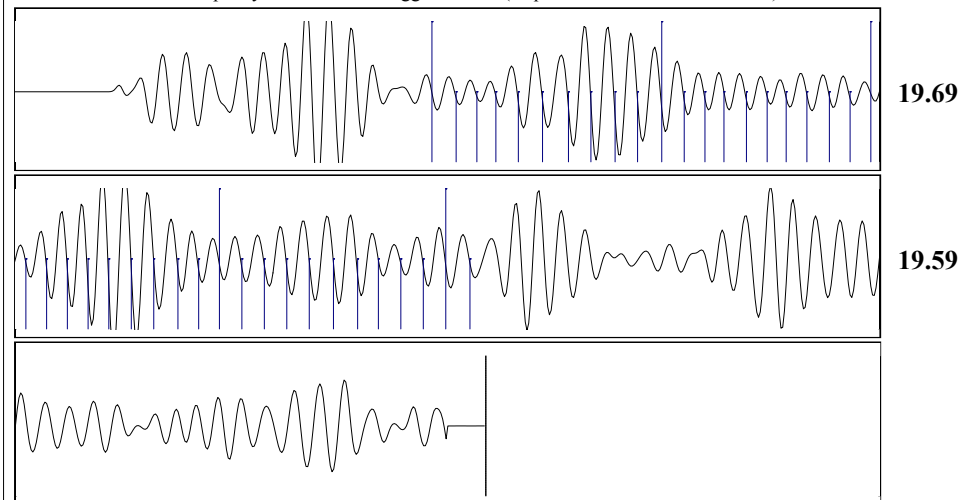
**Producing BHP**  
 237.1 psi (g)

**Static BHP**  
 - \* - psi (g)

**Formation Submergence**  
 Total Gaseous Liquid Column HT (TVD) 2007 ft  
 Equivalent Gas Free Liquid HT (TVD) 563 ft

Acoustic Test

Group: MyWells Well: Liggett # 1-32 (acquired on: 03/03/17 10:49:16)



Acoustic Velocity 1227.25 ft/s Joints counted 41  
 Joints Per Second 19.636 jts/sec Joints to liquid level 99.9277  
 Depth to liquid level 3122.74 ft Filter Width 17.2308 21.2308  
 Automatic Collar Count Yes Time to 1st Collar 0.964 3.052

Conservation Division  
District Office No. 1  
210 E. Frontview, Suite A  
Dodge City, KS 67801



Phone: 620-682-7933  
<http://kcc.ks.gov/>

Pat Apple, Chairman  
Shari Feist Albrecht, Commissioner  
Jay Scott Emler, Commissioner

Sam Brownback, Governor

March 14, 2017

Melody C. Fletcher  
Oil Producers Inc. of Kansas  
1710 WATERFRONT PKWY  
WICHITA, KS 67206-6603

Re: Temporary Abandonment  
API 15-097-21506-00-00  
LIGGETT 1-32  
SE/4 Sec.32-30S-19W  
Kiowa County, Kansas

Dear Melody C. Fletcher:

"Your temporary abandonment (TA) application for the well listed above has been approved. In accordance with K.A.R. 82-3-111 the TA status of this well will expire 03/14/2018.

- \* If you return this well to service or plug it, please notify the District Office.
- \* If you sell this well you are required to file a Transfer of Operator form, T-1.
- \* If the well will remain temporarily abandoned, you must submit a new TA application, CP-111, before 03/14/2018.

You may contact me at the number above if you have questions.

Very truly yours,

Michael Maier"